

VAN DE STADT TASMAN 48 — VAN DE STADT



Builder: VAN DE STADT

LOA: 48' 1" (14.66m)

Year Built: 1996

Model: Cruising Sailboat

Price: PRICE ON APPLICATION

Location: Spain

Our experienced yacht broker, Andrey Shestakov, will help you choose and buy a yacht that best suits your needs Van De Stadt Tasman 48 — VAN DE STADT from our catalogue. Presently, at Shestakov Yacht Sales Inc., we have a wide variety of yachts available on our sale's list. We also work in close contact with all the big yacht manufacturers from all over the world.

If you would like to buy a yacht Van De Stadt Tasman 48 — VAN DE STADT or would like help answering any questions concerning purchasing, selling or chartering a yacht, please call **+1(954)274-4435**

TABLE OF CONTENTS

TABLE OF CONTENTS	2
SPECIFICATIONS	5
Overview	5
Basic Information	5
Dimensions	6
Accommodations	6
Hull and Deck Information	6
Engine Information	6
PHOTOS	7
8098650_20211109115548587_1_LARGE	7
8098650_20211109115747084_1_LARGE	7
8098650_20211109115818877_1_LARGE	7
8098650_20211109115836218_1_LARGE	7
8098650_20211109115900635_1_LARGE	8
8098650_20211109120028148_1_LARGE	8
8098650_20211109120159414_1_LARGE	8
8098650_20211109120137688_1_LARGE	8
8098650_20211109125837784_1_LARGE	9
8098650_20211109120222691_1_LARGE	9
8098650_20211109125843116_1_LARGE	9
8098650_20211109125850086_1_LARGE	9
8098650_20211109125857255_1_LARGE	10
8098650_20211109125902366_1_LARGE	10
8098650_20211109125906680_1_LARGE	10
8098650_20211109125916715_1_LARGE	10
8098650_20211109125924024_1_LARGE	11
8098650_20211109125939596_1_LARGE	11
8098650_20211109125957164_1_LARGE	11

8098650_20211109125950622_1_LARGE	11
8098650_20211109130002861_1_LARGE	12
8098650_20211109130011685_1_LARGE	12
8098650_20211109130028450_1_LARGE	12
8098650_20211109130032296_1_LARGE	12
8098650_20211109130037813_1_LARGE	13
8098650_20211109130046404_1_LARGE	13
8098650_20211109130105867_1_LARGE	13
8098650_20211109130058079_1_LARGE	13
8098650_20211109130112876_1_LARGE	14
8098650_20211109130120481_1_LARGE	14
8098650_20211109130127906_1_LARGE	14
8098650_20211109130131740_1_LARGE	14
8098650_20211109130140492_1_LARGE	15
8098650_20211109130145045_1_LARGE	15
8098650_20211109130148487_1_LARGE	15
8098650_20211109130154194_1_LARGE	15
8098650_20211109130203057_1_LARGE	15
8098650_20211109130209991_1_LARGE	15
8098650_20211109130218096_1_LARGE	16
8098650_20211109130225096_1_LARGE	16
8098650_20211109130231997_1_LARGE	16
8098650_20211109130237190_1_LARGE	16
8098650_20211109130241342_1_LARGE	17
8098650_20211109130245527_1_LARGE	17
8098650_20211109130249604_1_LARGE	17
8098650_20211109130255741_1_LARGE	17
8098650_20211109130310366_1_LARGE	18
8098650_20211109130302758_1_LARGE	18

8098650_20211109130317276_1_LARGE	18
8098650_20211109130323572_1_LARGE	18
8098650_20211109130335652_1_LARGE	19
8098650_20211109130328399_1_LARGE	19
8098650_20211109130340787_1_LARGE	19
8098650_20211109130347321_1_LARGE	19
8098650_20211109130355883_1_LARGE	20
8098650_20211109130359129_1_LARGE	20
8098650_20211109130405234_1_LARGE	20
8098650_20211109130413434_1_LARGE	20
8098650_20211109130419731_1_LARGE	21
8098650_20211109130424212_1_LARGE	21
8098650_20211109130429525_1_LARGE	21
8098650_20211109130435644_1_LARGE	21
8098650_20211109130446404_1_LARGE	22
CONTACTS	23
Contact details	23
Telephones	23
Office hours	23
Address	23

SPECIFICATIONS

Overview

Refit 2021 Inner space - Complete ceiling paneling renewed - Complete wall paneling renewed - Various wood treatments - New quality mattresses (Gisatex Premium) - Cork floor laid - All lamps replaced (LED - stainless steel) - Served fridge and freezer - New sound system installed - New windows in the galley, midship toilet and midship cabin * Energy supply June 2021 - 4 x SOLARA solar modules S770M36 Vision 190 Wp 12V 770Wh/d installed - Victron SmartSolar MPPT 100/50 Bluetooth, charger solar modules - Battery bank completely renewed - House battery; (14 x Victron AMG Super Cycle 12V 125 Ah - 875 Ah 24V) - Redundant, Navigation battery (1 x Victron AMG Super Cycle 125 Ah - 12V) - Bluetooth Navigation battery monitor Victron SmartShunt 1000A/50mV - Bluetooth house battery monitor Victron SmartShunt 2000A/50mV - Victron Galvanic Isolator installed - Power distribution box completely revised - October 2021 Inverter Multiplus 24/5000 / 120-100 230V new and one spare part * April 2021 Main engine (Yanmar) service including all filters, all spare parts available for the next service * June 2021 Service generator (FischerPanda PMGi 5000) including all filters, spare parts available for the next service * Starter battery replaced June 2021 * June 2021 navigation electronics - ICOM IC-M330 Radio VHF - Raymarine AIS 700 transreceptor - 2 x Raymarine i70s multifunction instruments - New Ipad Pro 12" - Raymarine Axiom 9+ * Old autopilot Cetrek for redundance (relocate in case of failure) * June 2021 new autopilot Raymarine ACU-300, EV1 Evolution, p70RS control instrument * June 2021 diving compressor Corti (startup still pending) stainless steel housing * 2 diving bottles 10l/230bar * Nov 2021 Schenker Watermaker Digital Smart 60 (60l/h) installed * June 2021 complete set of covers + winter protection Sunbrella quality fabric * April 2021 all sails were professionally checked * June 2021 Rake mast winch renewed (Harken) * Rigcheck up to date * New underwater painting * April 2021 Diesel tanks cleaned * April 2021 Waste water pipe amidships toilet replaced * April 2021 Water tank BB cleaned * Various spare parts available (including complete new electric toilet) * The beautiful ship is in excellent condition and ready to sail around the world Very good condition 14.97 m x 4.49 m Length x Width 2.40 m Draft 20'170 kg Displacement A - OceanCE Design Category Steel Material Dual Wheel Control Steering Long Keel Keel Type 5'700 kg Ballast 8 Persons Certified No. of Persons 200 cm Headroom 3 Cabins No. of Cabins 8 beds No. of Beds 2 Bathrooms No. of Bathrooms 1'000 l Water Fresh Water Capacity 120 l Waste Water Holding Tank Inboard Direct-Drive Propulsion Yanmar 4LHA-HTP, Inbetriebnahme 2015 Engine 1 x 160 HP / 118 kW Engine Performance Diesel Fuel Type 1'120 l Fuel Capacity 1'958 h Engine Hours 90 m² (Battened Mainsail) Mainsail 60 m² (Roller Furling) Genoa 180 m² Spinnaker 210 m² Gennaker

Basic Information

Category: Cruising Sailboat

Model Year: 1996

Year Built: 1996

Country: Spain

Dimensions

LOA: 48' 1" (14.66m)

Accommodations

Total Cabins: 3

Sleeps: 8

Total Heads: 1

Hull and Deck Information

Hull Material: Steel

Engine Information

Engines: 1

Manufacturer: Yanmar

Engine Type: Inboard

Fuel Type: Diesel

PHOTOS

8098650_20211109115747084_1_LARGE



8098650_20211109115548587_1_LARGE



8098650_20211109115818877_1_LARGE



8098650_20211109115836218_1_LARGE



8098650_20211109115900635_1_LARGE



8098650_20211109120028148_1_LARGE



8098650_20211109120159414_1_LARGE

8098650_20211109120137688_1_LARGE



8098650_20211109125837784_1_LARGE



8098650_20211109120222691_1_LARGE



8098650_20211109125843116_1_LARGE



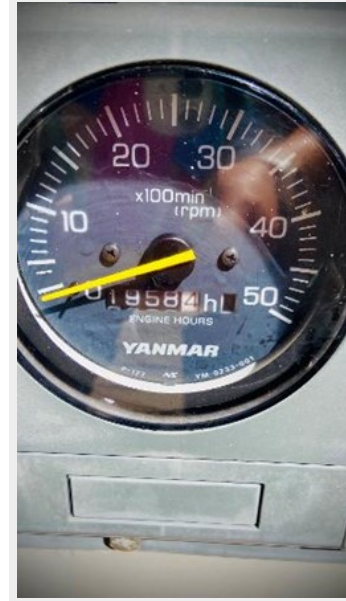
8098650_20211109125850086_1_LARGE



8098650_20211109125857255_1_LARGE



8098650_20211109125902366_1_LARGE



8098650_20211109125906680_1_LARGE



8098650_20211109125916715_1_LARGE



8098650_20211109125924024_1_LARGE



8098650_20211109125939596_1_LARGE



8098650_20211109125957164_1_LARGE

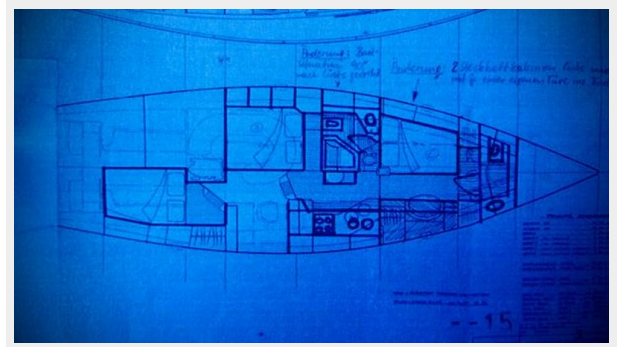
8098650_20211109125950622_1_LARGE



8098650_20211109130002861_1_LARGE



8098650_20211109130011685_1_LARGE



8098650_20211109130028450_1_LARGE



8098650_20211109130032296_1_LARGE



8098650_20211109130037813_1_LARGE

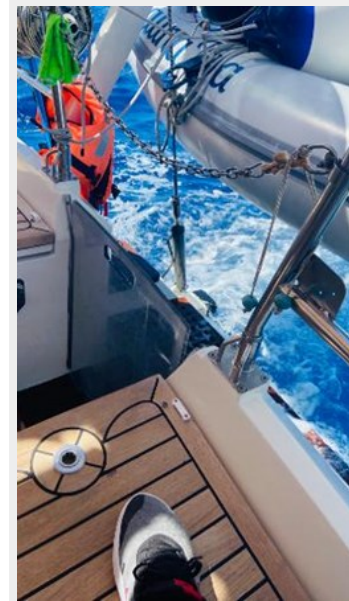


8098650_20211109130046404_1_LARGE



8098650_20211109130105867_1_LARGE

8098650_20211109130058079_1_LARGE



8098650_20211109130112876_1_LARGE



8098650_20211109130120481_1_LARGE



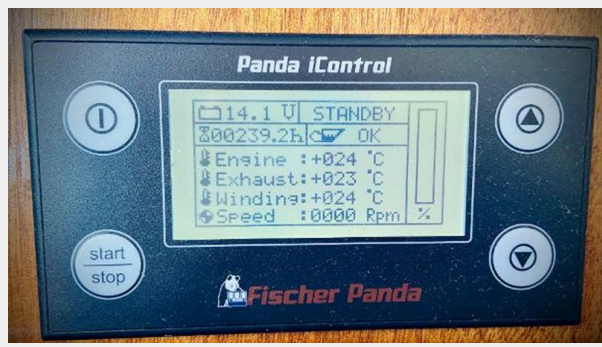
8098650_20211109130127906_1_LARGE



8098650_20211109130131740_1_LARGE



8098650_20211109130140492_1_LARGE



8098650_20211109130145045_1_LARGE



8098650_20211109130148487_1_LARGE



8098650_20211109130154194_1_LARGE



8098650_20211109130203057_1_LARGE



8098650_20211109130209991_1_LARGE



8098650_20211109130218096_1_LARGE



8098650_20211109130225096_1_LARGE



8098650_20211109130231997_1_LARGE



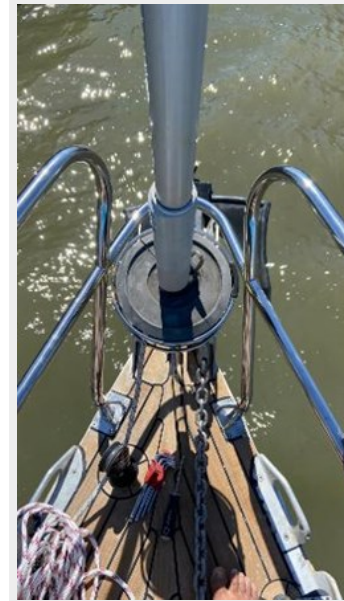
8098650_20211109130237190_1_LARGE



8098650_20211109130241342_1_LARGE



8098650_20211109130245527_1_LARGE



8098650_20211109130249604_1_LARGE



8098650_20211109130255741_1_LARGE



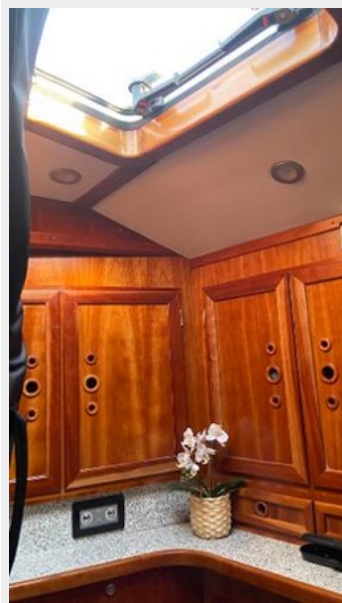
8098650_20211109130310366_1_LARGE



8098650_20211109130302758_1_LARGE



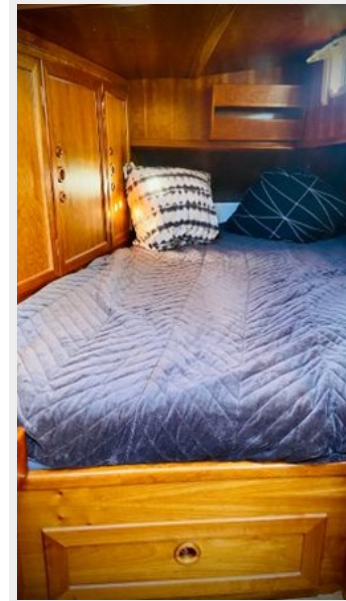
8098650_20211109130317276_1_LARGE



8098650_20211109130323572_1_LARGE



8098650_20211109130335652_1_LARGE



8098650_20211109130328399_1_LARGE



8098650_20211109130340787_1_LARGE



8098650_20211109130347321_1_LARGE



8098650_20211109130355883_1_LARGE



8098650_20211109130359129_1_LARGE



8098650_20211109130405234_1_LARGE



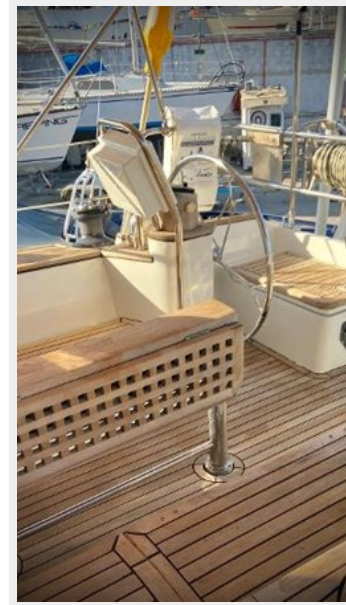
8098650_20211109130413434_1_LARGE



8098650_20211109130419731_1_LARGE



8098650_20211109130424212_1_LARGE



8098650_20211109130429525_1_LARGE



8098650_20211109130435644_1_LARGE



8098650_20211109130446404_1_LARGE



CONTACTS

Andrey Shestakov, leading yacht broker of the sales department of Shestakov Yacht Sales Inc. Shestakov Yacht Sales Inc., the official representative of the Miami/Fort Lauderdale FL headquarters.

Contact details

Email: andrey@shestakovyachtsales.com

Web: shestakovyachtsales.com/en/

Telephones

USA: +1(954)274-4435

Office hours

Monday – Saturday: **9:00 - 21:00** EDT

Sunday: **closed**

Address



Harbour Towne Marina, 850 NE 3rd St,
STE 213, Dania, FL 33004