

NO GRIPES III — BOSTON WHALER



Builder: BOSTON WHALER

Year Built: 2019

Model: Boats

Price: PRICE ON APPLICATION

Location: United States

LOA: 35' 6" (10.82mm)

Beam: 10.83

Min Draft: 2' 1" (0.63mm)

Our experienced yacht broker, Andrey Shestakov, will help you choose and buy a yacht that best suits your needs **NO GRIPES III — BOSTON WHALER** from our catalogue. Presently, at **Shestakov Yacht Sales Inc.**, we have a wide variety of yachts available on our sale's list. We also work in close contact with all the big **yacht manufacturers** from all over the world.

If you would like to buy a yacht **NO GRIPES III — BOSTON WHALER** or would like help answering any questions concerning purchasing, selling or chartering a yacht, please call **+1(954)274-4435**

TABLE OF CONTENTS

TABLE OF CONTENTS	2
SPECIFICATIONS	4
Basic Information	4
Dimensions	4
Speed, Capacities and Weight	4
Accommodations	4
Hull and Deck Information	4
Engine Information	5
PHOTOS	6
Stbd profile	6
Stbd bow profile	6
Stern profile	6
Port bow profile	6
Foldout stern bench seat	6
Aft cockpit	6
Aft cockpit with electric retractable sunshade	7
Aft cockpit view 2	7
Cockpit/Helm deck second row reversible seat	7
Grill with the marble cover on	7
Helm station	7
Helm	7
Helm view 2	8
Dashboard	8
Mercury throttle control and joystick control with Skyhook	8
Access to the bow area	8
Bow area	8
Bow seating with table installed	8
Speaker and cup holders in the bow area	9

Bow seating with filler	9
Opposing seating in the cabin that converts to a berth	9
Port profile 2	9
Head	9
Opposing seating converted to a berth	9
Stbd quarter profile	10
Vanity sink	10
Triple engines	10
Triple engines view 2	10
Triple engines view from stbd	10
Port bow profile 2	10
Ground fault sensing modules and Marinco switches	11
Stbd profile (on lift)	11
JL Audio speakers at the stbd helm deck counter	11
Additional electronics at the helm	11
Port profile Boat underway	11
Boat underway	11
Boat underway view 2	12
CONTACTS	13
Contact details	13
Telephones	13
Office hours	13
Address	13

SPECIFICATIONS

Basic Information

Category: Boats

Sub Category: Center Console

Model Year: 2019

Year Built: 2019

Country: United States

Dimensions

LOA: 35' 6" (10.82mm)

Beam: 10.83

Min Draft: 2' 1" (0.63mm)

Speed, Capacities and Weight

Water Capacity: 45 Gallons

Holding Tank: 10 Gal Gallons

Fuel Capacity: 385 Gal Gallons

Accommodations

Total Berths: 1

Sleeps: 2

Total Heads: 1

Hull and Deck Information

Hull Material: Fiberglass

Hull Configuration: Deep Vee

Hull Color: Abaco Blue

Engine Information

Engines: 3

Manufacturer: Mercury

Engine Type: Outboard

Fuel Type: Gas/Petrol

PHOTOS

Stbd profile



Stbd bow profile



Port bow profile



Stern profile



Foldout stern bench seat



Aft cockpit



Aft cockpit view 2



Aft cockpit with electric retractable sunshade



Cockpit/Helm deck second row reversible seat



Grill with the marble cover on



Helm station



Helm



Helm view 2



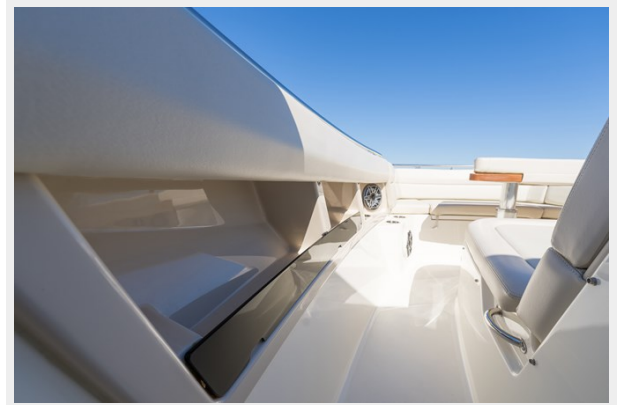
Dashboard



Mercury throttle control and joystick control with Skyhook



Access to the bow area



Bow area



Bow seating with table installed



Bow seating with filler



Speaker and cup holders in the bow area



Port profile 2



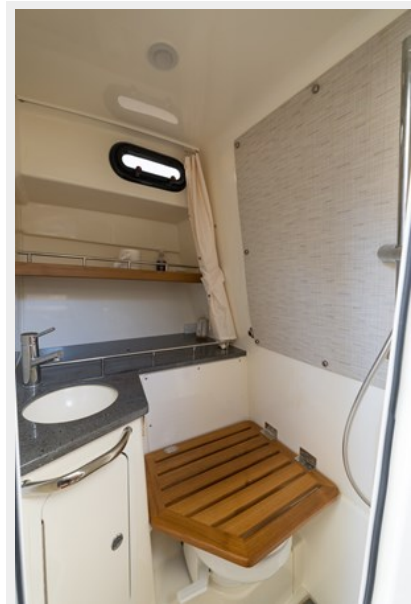
Opposing seating in the cabin that converts to a berth



Opposing seating converted to a berth



Head



Vanity sink



Stbd quarter profile



Triple engines



Triple engines view 2



Triple engines view from stbd



Port bow profile 2



Stbd profile (on lift)



**Ground fault sensing modules and
Marinco switches**



**JL Audio speakers at the stbd helm
deck counter**



Additional electronics at the helm



Port profile Boat underway



Boat underway



Boat underway view 2



CONTACTS

Andrey Shestakov, leading yacht broker of the sales department of Shestakov Yacht Sales Inc. Shestakov Yacht Sales Inc., the official representative of the Miami/Fort Lauderdale FL headquarters.

Contact details

Email: **andrey@shestakovyachtsales.com**

Web: shestakovyachtsales.com/en/

Telephones

USA: **+1(954)274-4435**

Office hours

Monday – Saturday: **9:00 - 21:00** EDT

Sunday: **closed**

Address



Harbour Towne Marina, 850 NE 3rd St, STE 213, Dania, FL 33004