

KELLY ANN — HCB



Builder: HCB

Year Built: 2021

Model: center_console

Price: \$845,000 USD

Location: United States

LOA: 42' (12.8mm)

Beam: 12

Min Draft: 2' (0.61mm)

Max Draft: 3' (0.91mm)

Cruise Speed: 26.07 Knots Kts. (30 MPH)

Max Speed: 52.14 Knots Kts. (60 MPH)

Our experienced yacht broker, Andrey Shestakov, will help you choose and buy a yacht that best suits your needs **KELLY ANN — HCB** from our catalogue. Presently, at Shestakov Yacht Sales Inc., we have a wide variety of yachts available on our sale's list. We also work in close contact with all the big yacht manufacturers from all over the world.

If you would like to buy a yacht **KELLY ANN — HCB** or would like help answering any questions concerning purchasing, selling or chartering a yacht, please call **+1(954)274-4435**

TABLE OF CONTENTS

TABLE OF CONTENTS	2
SPECIFICATIONS	4
Overview	4
Basic Information	5
Dimensions	5
Speed, Capacities and Weight	5
Accommodations	5
Hull and Deck Information	6
Engine Information	6
PHOTOS	7
Boat5	7
Boat4	7
Boat6	7
Boat7	7
DSC06882	7
Boat8 (1)	7
DSC06897	8
DSC06905	8
DSC06907	8
DSC06910	8
DSC06915 (1)	8
DSC06872	8
DSC06877	9
DSC06878	9
DSC06887	9
DSC06893	9
DSC06921	9
DSC06915	9

DSC06881	10
DSC06920	10
DSC06863	10
DSC06862	10
DSC06871	10
DSC06868	10
DSC06867	11
DSC06864	11
DSC06869	11
DSC06923	11
DSC06925	11
DSC06927	11
DSC06928	12
DSC06930	12
DSC06923	12
DSC06925	12
DSC06927	12
DSC06928	12
DSC06930	13
CONTACTS	14
Contact details	14
Telephones	14
Office hours	14
Address	14

SPECIFICATIONS

Overview

The 2021 12.8m HCB 42 LUJO Boat is a contemporary masterpiece that resonates luxury, innovation, and unadulterated power. A vessel that is designed not just for the seas, but for those with an insatiable need for navigation without boundaries. This finely built vessel stretches 12.8 meters long, offering generous space for passengers while maintaining an impressively agile prowess when encountering any wave conditions. It is the perfect blend of a high-performance cruiser and a luxury yacht, fully reflecting its name 'LUJO,' which translates to 'luxury' in Spanish. The exterior of the HCB 42 LUJO Boat strikes a stunning stance with its modern design. The hull, constructed with the finest materials, boasts robustness and stability, ensuring maximum safety and endurance even in the harshest sea conditions. Its sleekness is perfectly complemented by the effortlessly chic detailing and high gloss finish, creating a sense of grandeur visible from any dock or marina. The 2021 12.8m HCB 42 LUJO Boat houses an incredibly spacious cockpit. The cockpit area is spacious and incorporates comfortable seating for passengers to ensure a relaxed journey. The ergonomically designed helm station offers state-of-the-art navigational technology, making cruising easier than ever. Underneath, your marine adventure is powered by the latest high-performance engines. Three Yamaha 425 XTO Offshore outboards propel the 42 LUJO, delivering superior power and performance. These reliable engines offer an impressive top speed and fuel efficiency, giving you the freedom to explore farther and faster. Furthermore, the harmonious pairing of speed, agility, and efficiency makes this vessel remarkably versatile, meeting all your maritime expectations. The interiors of the 42 LUJO reflect a maritime sanctuary of luxury. The richly appointed salon is stylishly decorated with plush seating, precision-crafted wood finishes, and modern appliances. It also features cutting-edge audio and visual systems ensuring premium entertainment during your time at sea. The salon effortlessly extends into the galley, which is equipped with high-end appliances, ample storage, and a sophisticated décor. Simply, it's a private luxury condo on water. The vessel offers deluxe accommodation, featuring elegantly designed cabins that echo the luxurious theme of the rest of the boat. The master suite is spacious, outfitted with a queen-sized bed, ample storage, and the luxurious addition of an en suite bathroom. Additionally, secondary guest cabins offer high-quality finishes and comfortable beds. All berths are noise-insulated to provide a tranquil refuge for passengers during overnight journeys. As for technology and navigation, the 2021 12.8m HCB 42 LUJO Boat brims with the latest innovation. Advanced navigational tools, digital touch-screen controls, and systems monitoring features are just some of the sophisticated technologies integrated into this boat. Here, convenience and control are provided to the passengers and the captain, ensuring a seamless experience on the water. The 2021 HCB 42 LUJO boasts a robust fuel capacity, allowing you to relish longer sea journeys without frequent refueling stops. Furthermore, the vessel's draft and beam are expertly designed to provide superior stability and maneuverability, ensuring a smooth and controlled ride. Moreover, this nautical marvel hosts a range of outdoor amenities such as an expansive sun deck, a luxurious dining area, and an advanced hydraulic swim platform. Each of these spaces is intentionally designed to give you full panoramic views while you indulge in ultimate luxury at sea. In conclusion, the 2021 12.8m HCB 42 LUJO is more

than just a boat. It is a symbol of elegance, performance, and innovation, right at the intersection of form and function. Whether you seek thrilling marine adventures or wish to recline in luxury at sea, the 42 LUJO is the ideal partner for your journey. Surely, with the 2021 12.8m HCB 42 LUJO Boat, every sea excursion transforms into an unforgettable voyage.

Basic Information

Category: center_console

Sub Category: Center Console

Model Year: 2021

Year Built: 2021

Country: United States

Dimensions

LOA: 42' (12.8mm)

Beam: 12

Min Draft: 2' (0.61mm)

Max Draft: 3' (0.91mm)

Speed, Capacities and Weight

Cruise Speed: 26.07 Knots Kts. (30 MPH)

Cruise Speed Range: 350

Max Speed: 52.14 Knots Kts. (60 MPH)

Max Speed Range: 150 Kts.

Gross Tonnage: 15 Pounds

Water Capacity: 50 Gallons

Holding Tank: 20 Gal Gallons

Fuel Capacity: 600 Gal Gallons

Accommodations

Total Cabins: 1

Total Berths: 2

Sleeps: 2

Total Heads: 1

Hull and Deck Information

Hull Material: Fiberglass

Hull Configuration: Deep Vee

Hull Designer: HCB

Interior Designer: HCB

Engine Information

Engines: 4

Manufacturer: Yamaha

PHOTOS

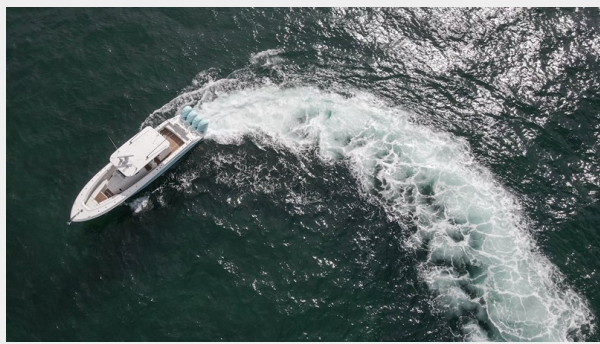
Boat5



Boat4



Boat6



Boat7



Boat8 (1)



DSC06882



DSC06897



DSC06905



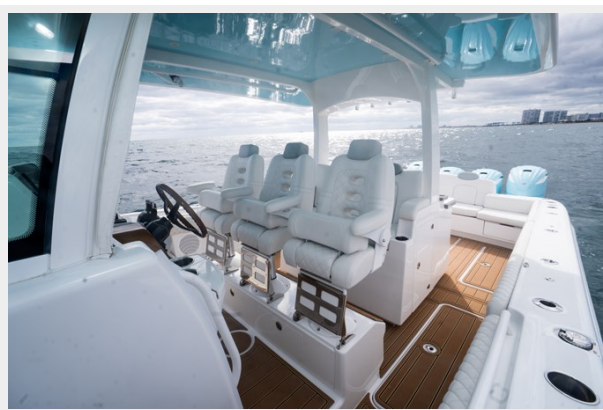
DSC06907



DSC06910



DSC06915 (1)



DSC06872



DSC06877



DSC06878



DSC06887



DSC06893



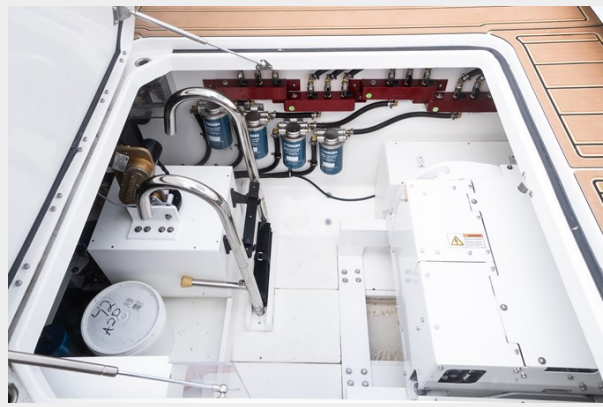
DSC06921



DSC06915



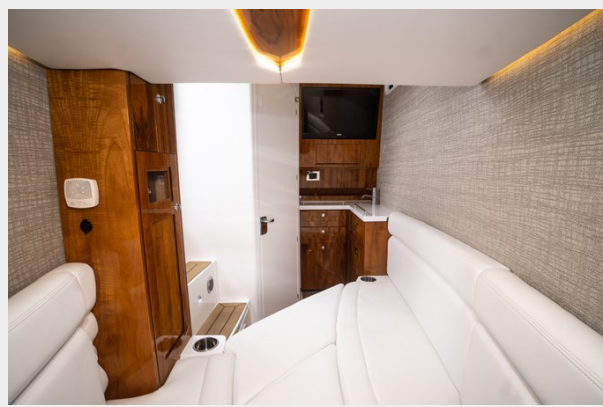
DSC06881



DSC06920



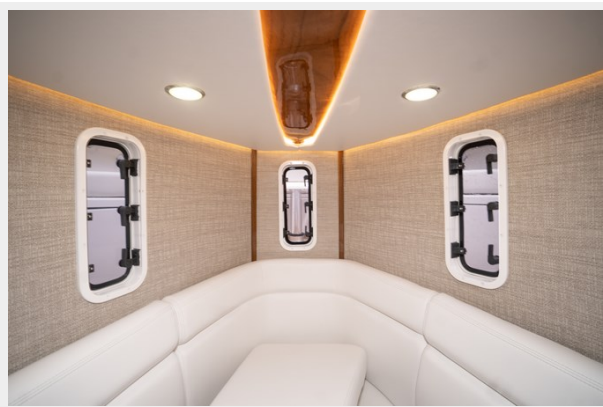
DSC06863



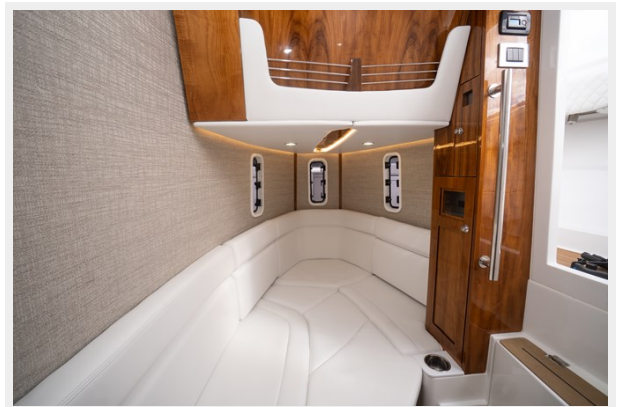
DSC06862



DSC06871



DSC06868



DSC06864



DSC06867



DSC06869



DSC06923



DSC06925



DSC06927



DSC06928



DSC06930



DSC06923



DSC06925



DSC06927



DSC06928



DSC06930



CONTACTS

Andrey Shestakov, leading yacht broker of the sales department of Shestakov Yacht Sales Inc. Shestakov Yacht Sales Inc., the official representative of the Miami/Fort Lauderdale FL headquarters.

Contact details

Email: andrey@shestakovyachtsales.com

Web: shestakovyachtsales.com/en/

Telephones

USA: +1(954)274-4435

Office hours

Monday – Saturday: **9:00 - 21:00** EDT

Sunday: **closed**

Address



Harbour Towne Marina, 850 NE 3rd St,
STE 213, Dania, FL 33004