

ANGEL WING — HUNTER



Builder: HUNTER

Year Built: 1997

Model: Cruising Sailboat

Price: PRICE ON APPLICATION

Location: United States

LOA: 37' (11.28mm)

Beam: 12.58

Max Draft: 5' (1.52mm)

Cruise Speed: 6 Knots Kts. (7 MPH)

Max Speed: 8 Knots Kts. (9 MPH)

Our experienced yacht broker, Andrey Shestakov, will help you choose and buy a yacht that best suits your needs **Angel Wing — HUNTER** from our catalogue. Presently, at Shestakov Yacht Sales Inc., we have a wide variety of yachts available on our sale's list. We also work in close contact with all the big yacht manufacturers from all over the world.

If you would like to buy a yacht **Angel Wing — HUNTER** or would like help answering any questions concerning purchasing, selling or chartering a yacht, please call **+1(954)274-4435**

TABLE OF CONTENTS

TABLE OF CONTENTS	2
SPECIFICATIONS	5
Overview	5
Basic Information	5
Dimensions	5
Speed, Capacities and Weight	5
Accommodations	6
Hull and Deck Information	6
Engine Information	6
PHOTOS	7
PB151307	7
PB151308	7
PB151309	7
PB151310	7
PB151311	7
PB151312	7
PB151313	8
PB151314	8
PB151315	8
PB151316	8
PB151317	8
PB151319	8
PB151320	9
PB151321	9
PB151323	9
PB151324	9
PB151326	9
PB151327	9

PB151328	10
PB151329	10
PB151330	10
PB151333	10
PB151334	10
PB151335	10
PB151336	11
PB151337	11
PB151338	11
PB151339	11
PB151340	11
PB151341	11
PB151342	12
PB151344	12
PB151345	12
PB151346	12
PB151347	12
PB151348	12
PB151350	13
PB151351	13
PB151352	13
PB151353	13
PB151354	13
PB151355	13
PB151356	14
PB151357	14
PB151358	14
PB151359	14
PB151360	14

PB151362	14
PB151363	15
PB151364	15
PB151365	15
PB151374	15
PB151381	15
PB151382	15
PB151383	16
PB151384	16
CONTACTS	17
Contact details	17
Telephones	17
Office hours	17
Address	17

SPECIFICATIONS

Overview

New to the Market this November 2021!

Priced to sell fast!!!

- AC/Heat
- Refrigerator
- Full Electronics
- Furling Mast
- Newer Bimini Top
- Includes Dinghy and Honda Outboard (sorry no paperwork on dinghy)
- 2 Staterooms, 1 Full Size Head
- Shoal Keel
- Windlass Anchor

Basic Information

Category: Cruising Sailboat

Model Year: 1997

Year Built: 1997

Country: United States

Dimensions

LOA: 37' (11.28mm)

LWL: 32' (9.75mm)

Beam: 12.58

Max Draft: 5' (1.52mm)

Speed, Capacities and Weight

Cruise Speed: 6 Knots Kts. (7 MPH)

Max Speed: 8 Knots Kts. (9 MPH)

Water Capacity: 75 Gallons

Holding Tank: 35 Gal Gallons

Fuel Capacity: 35 Gal Gallons

Accommodations

Total Cabins: 2

Total Berths: 2

Sleeps: 6

Total Heads: 1

Hull and Deck Information

Hull Material: Fiberglass

Engine Information

Engines: 1

Manufacturer: Yanmar

Engine Type: Inboard

Fuel Type: Diesel

PHOTOS

PB151307



PB151308



PB151309



PB151310



PB151311



PB151312



PB151313



PB151314



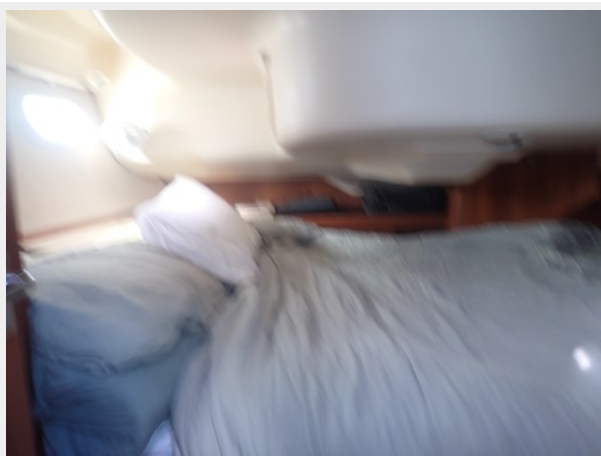
PB151315



PB151316



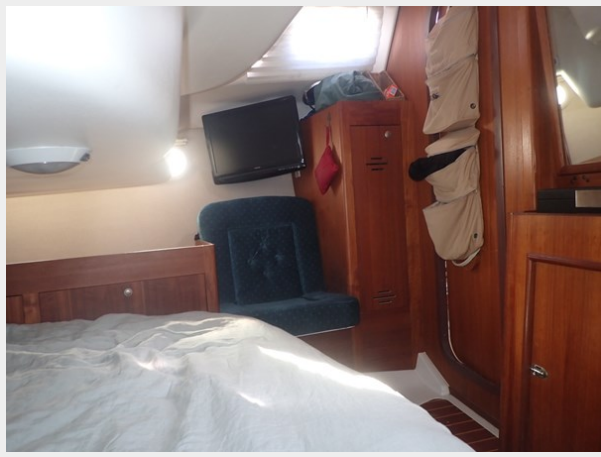
PB151317



PB151319



PB151320



PB151321



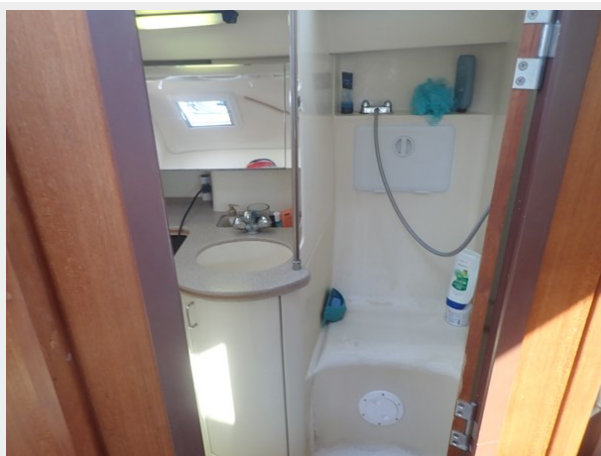
PB151323



PB151324



PB151326



PB151327



PB151328



PB151329



PB151330



PB151333



PB151334



PB151335



PB151336



PB151337



PB151338



PB151339



PB151340



PB151341



PB151342



PB151344



PB151345



PB151346



PB151347



PB151348



PB151350



PB151351



PB151352



PB151353



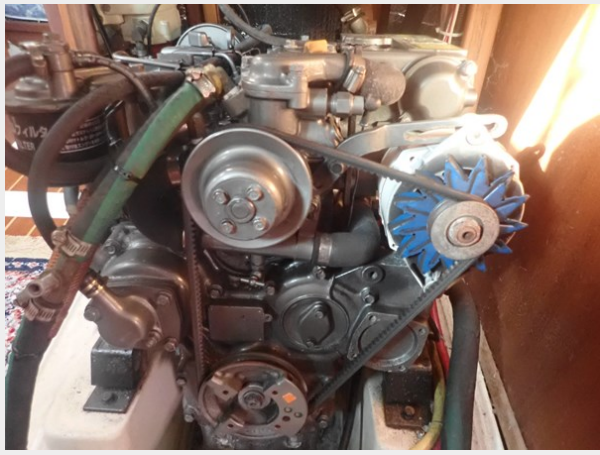
PB151354



PB151355



PB151356



PB151357



PB151358



PB151359



PB151360



PB151362



PB151363



PB151364



PB151365



PB151374



PB151381



PB151382



PB151383



PB151384



CONTACTS

Andrey Shestakov, leading yacht broker of the sales department of Shestakov Yacht Sales Inc. Shestakov Yacht Sales Inc., the official representative of the Miami/Fort Lauderdale FL headquarters.

Contact details

Email: andrey@shestakovyachtsales.com

Web: shestakovyachtsales.com/en/

Telephones

USA: +1(954)274-4435

Office hours

Monday – Saturday: **9:00 - 21:00** EDT

Sunday: **closed**

Address



Harbour Towne Marina, 850 NE 3rd St,
STE 213, Dania, FL 33004