

CREWS CONTROL — CHRIS-CRAFT



Builder: CHRIS-CRAFT

Year Built: 1986

Model: Motor Yacht

Price: PRICE ON APPLICATION

Location: United States

LOA: 48' (14.63mm)

Beam: 14.75

Max Draft: 3' 6" (1.07mm)

Cruise Speed: 18 Knots Kts. (21 MPH)

Max Speed: 22 Knots Kts. (25 MPH)

Our experienced yacht broker, Andrey Shestakov, will help you choose and buy a yacht that best suits your needs **Crews Control — CHRIS-CRAFT** from our catalogue. Presently, at Shestakov Yacht Sales Inc., we have a wide variety of yachts available on our sale's list. We also work in close contact with all the big yacht manufacturers from all over the world.

If you would like to buy a yacht **Crews Control — CHRIS-CRAFT** or would like help answering any questions concerning purchasing, selling or chartering a yacht, please call **+1(954)274-4435**

TABLE OF CONTENTS

TABLE OF CONTENTS	2
SPECIFICATIONS	5
Overview	5
Basic Information	5
Dimensions	5
Speed, Capacities and Weight	5
Accommodations	6
Hull and Deck Information	6
Engine Information	6
PHOTOS	7
0_2778927_	7
2_2778927_	7
3_2778927_	7
4_2778927_	7
5_2778927_	7
6_2778927_	7
7_2778927_	8
8_2778927_	8
9_2778927_	8
10_2778927_	8
11_2778927_	8
12_2778927_	8
13_2778927_	9
14_2778927_	9
15_2778927_	9
16_2778927_	9
17_2778927_	9
18_2778927_	9

19_2778927_	10
20_2778927_	10
21_2778927_	10
22_2778927_	10
23_2778927_	10
24_2778927_	10
25_2778927_	11
26_2778927_	11
27_2778927_	11
28_2778927_	11
29_2778927_	11
30_2778927_	11
31_2778927_	12
32_2778927_	12
33_2778927_	12
34_2778927_	12
35_2778927_	12
36_2778927_	12
37_2778927_	13
38_2778927_	13
39_2778927_	13
40_2778927_	13
41_2778927_	13
42_2778927_	13
43_2778927_	14
44_2778927_	14
45_2778927_	14
46_2778927_	14
47_2778927_	14

48_2778927_	14
49_2778927_	15
50_2778927_	15
51_2778927_	15
52_2778927_	15
53_2778927_	15
54_2778927_	15
55_2778927_	16
56_2778927_	16
57_2778927_	16
58_2778927_	16
59_2778927_	16
60_2778927_	16
CONTACTS	17
Contact details	17
Telephones	17
Office hours	17
Address	17

SPECIFICATIONS

Overview

CREWS CONTROL This Chris Craft 48 yacht fisherman is a American made well maintained cockpit Motoryacht. Ideal for a live aboard. She is a spacious and comfortable cruiser with all the amenities. The salon is roomy and well planned with her galley down and adjoining dinette full size refrigerator and microwave she has all the comforts of home. This two stateroom two head yacht makes her easy for guests and extended cruising. Master stateroom features tub/shower combo. Aft deck for entertaining & a large cockpit with walk through transom to board your dinghy. The davit system is unique and easy to operate. The flybridge has a wrap around sofa and two captains chairs. Powered by twin 454 CI Crusaders she can cruise at 15 knots and tops out at 20 knots. She is a very stable, dry comfortable ride.

Basic Information

Category: Motor Yacht

Sub Category: Aft Cabin

Model Year: 1986

Year Built: 1986

Country: United States

Dimensions

LOA: 48' (14.63mm)

Beam: 14.75

Max Draft: 3' 6" (1.07mm)

Speed, Capacities and Weight

Cruise Speed: 18 Knots Kts. (21 MPH)

Max Speed: 22 Knots Kts. (25 MPH)

Water Capacity: 160 Gallons

Holding Tank: 40 Gal Gallons

Fuel Capacity: 600 Gal Gallons

Accommodations

Total Cabins: 2

Total Berths: 2

Total Heads: 2

Hull and Deck Information

Hull Material: Fiberglass

Engine Information

Engines: 2

Manufacturer: Crusader

Engine Type: Inboard

Fuel Type: Gas/Petrol

PHOTOS

0_2778927_



2_2778927_



3_2778927_



4_2778927_



5_2778927_



6_2778927_



7_2778927_



8_2778927_



9_2778927_



10_2778927_



11_2778927_



12_2778927_



13_2778927_



14_2778927_



15_2778927_



16_2778927_



17_2778927_



18_2778927_



19_2778927_



20_2778927_



21_2778927_



22_2778927_



23_2778927_



24_2778927_



25_2778927_



26_2778927_



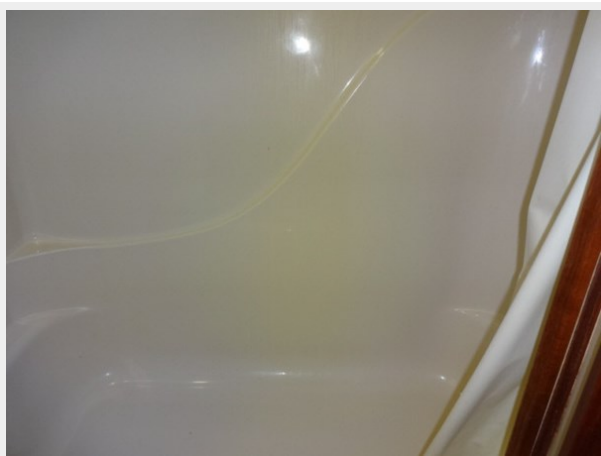
27_2778927_



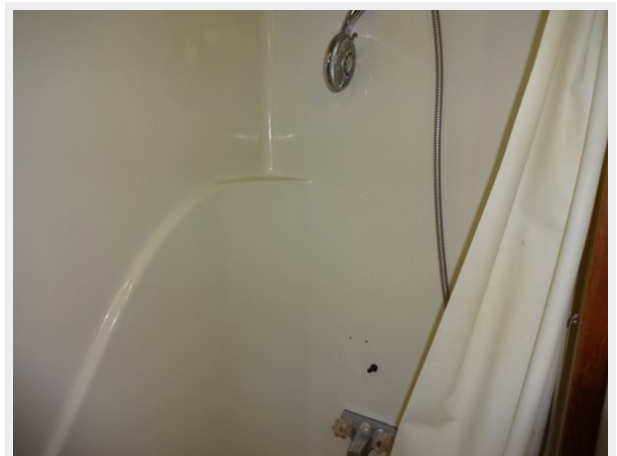
28_2778927_



29_2778927_



30_2778927_



31_2778927_



32_2778927_



33_2778927_



34_2778927_



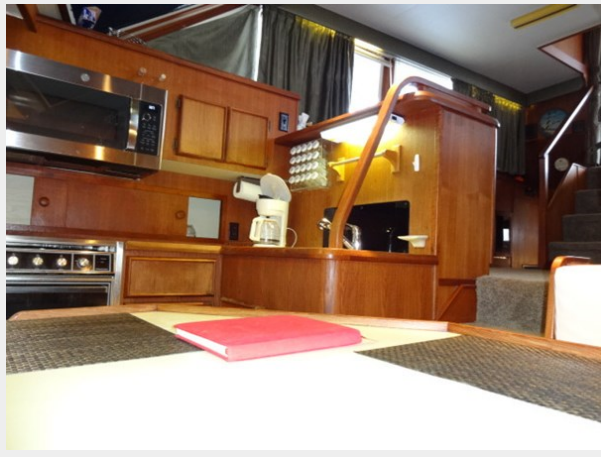
35_2778927_



36_2778927_



37_2778927_



38_2778927_



39_2778927_



40_2778927_



41_2778927_



42_2778927_



43_2778927_



44_2778927_



45_2778927_



46_2778927_



47_2778927_



48_2778927_



49_2778927_



50_2778927_



51_2778927_



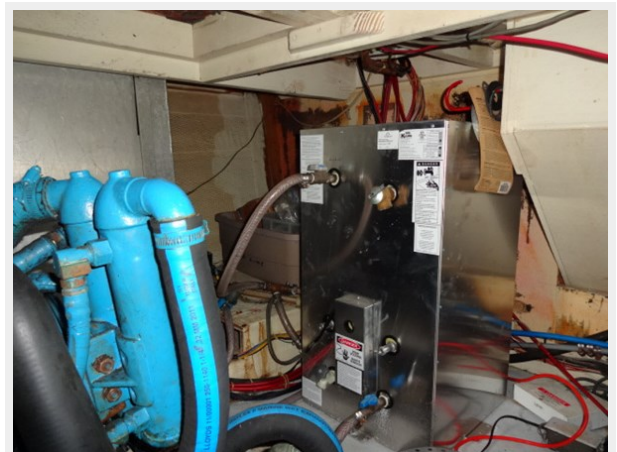
52_2778927_



53_2778927_



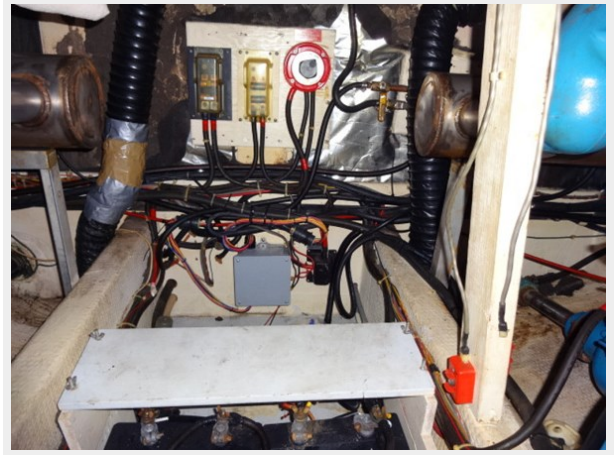
54_2778927_



55_2778927_



56_2778927_



57_2778927_



58_2778927_



59_2778927_



60_2778927_



CONTACTS

Andrey Shestakov, leading yacht broker of the sales department of Shestakov Yacht Sales Inc. Shestakov Yacht Sales Inc., the official representative of the Miami/Fort Lauderdale FL headquarters.

Contact details

Email: andrey@shestakovyachtsales.com

Web: shestakovyachtsales.com/en/

Telephones

USA: +1(954)274-4435

Office hours

Monday – Saturday: **9:00 - 21:00** EDT

Sunday: **closed**

Address



Harbour Towne Marina, 850 NE 3rd St,
STE 213, Dania, FL 33004