

PREDATOR 65 — SUNSEEKER



Builder: SUNSEEKER

Year Built: 2022

Model: Motor Yacht

Price: PRICE ON APPLICATION

Location: United States

LOA: 65' (19.81mm)

Beam: 16.66

Max Draft: 5' 3" (1.6mm)

Max Speed: 35 Knots Kts. (40 MPH)

Our experienced yacht broker, Andrey Shestakov, will help you choose and buy a yacht that best suits your needs **Predator 65 — SUNSEEKER** from **our catalogue**. Presently, at **Shestakov Yacht Sales Inc.**, we have a wide variety of yachts available on **our sale's list**. We also work in close contact with all the big **yacht manufacturers** from all over the world.

If you would like to buy a yacht **Predator 65 — SUNSEEKER** or would like help answering any questions concerning purchasing, selling or chartering a yacht, please call **+1(954)274-4435**

TABLE OF CONTENTS

TABLE OF CONTENTS	2
SPECIFICATIONS	4
Overview	4
Basic Information	4
Dimensions	4
Speed, Capacities and Weight	5
Accommodations	5
Hull and Deck Information	5
Engine Information	5
PHOTOS	6
2	6
3	6
4	6
5	6
6	6
7	6
8	7
9	7
910	7
914	7
915	7
911	7
912	8
913	8
917	8
916	8
918	8
920	8

921	9
922	9
923	9
924	9
925	9
926	9
927	10
928	10
929	10
930	10
931	10
932	10
933	11
934	11
935	11
936	11
937	11
938	11
939	12
940	12
941	12
942	12
CONTACTS	13
Contact details	13
Telephones	13
Office hours	13
Address	13

SPECIFICATIONS

Overview

Externally there are two distinct entertaining areas; a bow seating area complete with a large sunpad, and a broad cockpit with comfortable dining seating. Aft, the open-plan space can be designed to the owner's exact requirements. Furniture options include comfortable seating backed onto a large sun pad over the garage and a social bar unit with matching stools on the port side, a fully integrated wet bar or extended J-shaped lounge seating running aft from the galley across the width of the cockpit. The multiplicity of arrangements and furniture configurations available offer space and flexibility for a family or a group of couples. Below deck, the three-cabin layout provides accommodation for up to six guests. A spacious, full-beam master stateroom features a generous en-suite, while the thoughtfully designed forward VIP cabin provides an equally comfortable haven for guests. Each guest cabin has an en suite, and there is a separate day-head below. Optionally, an open-plan Owner's Office linked to the master stateroom, a single-berth cabin, lower deck galley or saloon can be specified, delivering flexibility for any owner. An extra-wide tender garage allows a Williams 345 jet tender to be carried and launched via a new diagonal sliding hydraulic bathing platform. The additional garage space can store SeaBobs, inflatable paddleboards, diving equipment or racking. If specified as a Beach Club, the fully-flush floor lends itself to free-standing furniture with a rain shower, lighting and speakers built in to the opened door.

Basic Information

Category: Motor Yacht

Model Year: 2022

Year Built: 2022

Country: United States

Dimensions

LOA: 65' (19.81mm)

Beam: 16.66

Max Draft: 5' 3" (1.6mm)

Speed, Capacities and Weight

Max Speed: 35 Knots Kts. (40 MPH)

Max Speed Range: 750 Kts.

Water Capacity: 211 Gallons

Fuel Capacity: 924 Gal Gallons

Accommodations

Total Cabins: 3

Total Heads: 4

Hull and Deck Information

Hull Material: Fiberglass

Engine Information

Engines: 2

Manufacturer: Volvo Penta

Engine Type: Inboard

Fuel Type: Diesel

PHOTOS

2



3



4



5



6



7



8



9



910



914



915



911



912



913



917



916



918



920



921



922



923



924



925



926



927



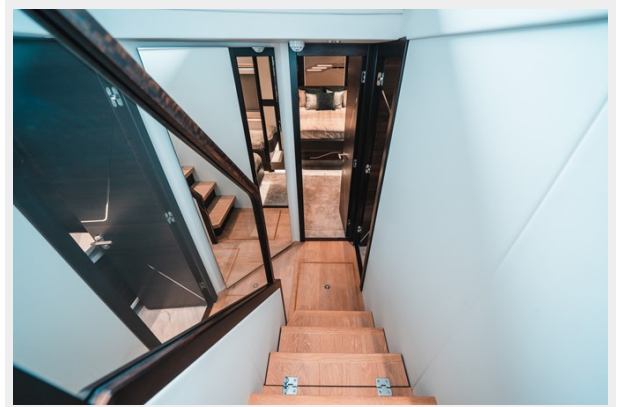
928



929



930



931



932



933



934



935



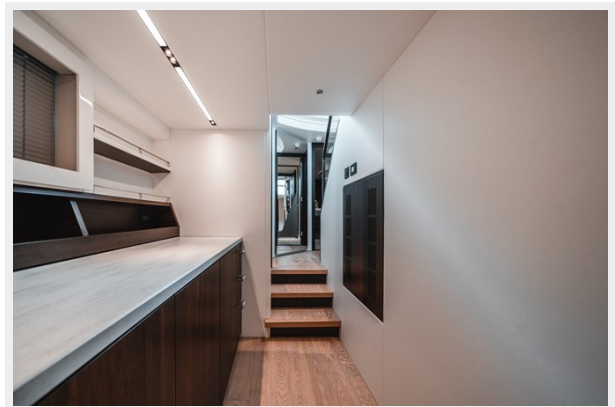
936



937



938



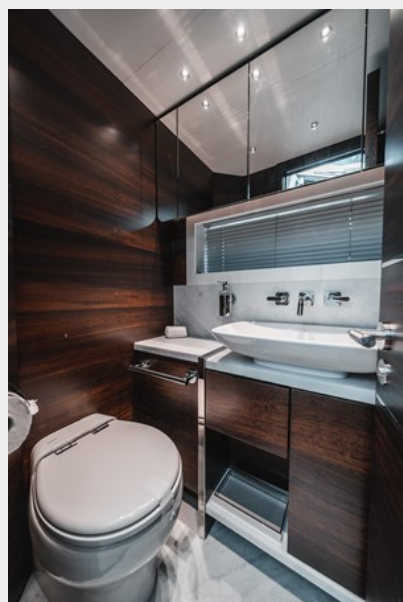
939



940



941



942



CONTACTS

Andrey Shestakov, leading yacht broker of the sales department of Shestakov Yacht Sales Inc. Shestakov Yacht Sales Inc., the official representative of the Miami/Fort Lauderdale FL headquarters.

Contact details

Email: **andrey@shestakovyachtsales.com**

Web: shestakovyachtsales.com/en/

Telephones

USA: **+1(954)274-4435**

Office hours

Monday – Saturday: **9:00 - 21:00** EDT

Sunday: **closed**

Address



Harbour Towne Marina, 850 NE 3rd St, STE 213, Dania, FL 33004