

IMPETUOUS — FEADSHIP



Builder: FEADSHIP

Year Built: 1977

Model: Motor Yacht

Price: PRICE ON APPLICATION

Location: United States

LOA: 85' (25.91mm)

Beam: 20.5

Max Draft: 6' 3" (1.9mm)

Cruise Speed: 12 Knots Kts. (14 MPH)

Max Speed: 20 Knots Kts. (23 MPH)

Our experienced yacht broker, Andrey Shestakov, will help you choose and buy a yacht that best suits your needs **IMPETUOUS — FEADSHIP** from our catalogue. Presently, at **Shestakov Yacht Sales Inc.**, we have a wide variety of yachts available on our sale's list. We also work in close contact with all the big yacht manufacturers from all over the world.

If you would like to buy a yacht **IMPETUOUS — FEADSHIP** or would like help answering any questions concerning purchasing, selling or chartering a yacht, please call **+1(954)274-4435**

TABLE OF CONTENTS

TABLE OF CONTENTS	2
SPECIFICATIONS	5
Overview	5
Basic Information	5
Dimensions	5
Speed, Capacities and Weight	5
Accommodations	5
Hull and Deck Information	6
Engine Information	6
PHOTOS	7
Cockpit	7
Cockpit	7
Enclosed Aft Deck	7
Enclosed Aft Deck	7
Enclosed Aft Deck	7
Salon	7
Salon	8
Salon	8
Stairway to Staterooms	8
Dining Area	8
Galley	8
Galley	8
Galley	9
Galley	9
Master Stateroom	9
Master Stateroom	9
Master Ensuite	9
Master Bath	9

Guest Stateroom	10
Guest Ensuite	10
Guest Shower	10
Guest Stateroom	10
Guest Ensuite	10
Guest Shower	10
Lower Deck Foyer	11
Pilothouse	11
Pilothouse Seating	11
Starboard Stern Profile	11
Engine Room	11
Engine Room	11
Engine Room	12
Crew Quarters	12
Crew Quarters	12
Crew Cabin	12
Crew Head	12
Starboard Bow Profile	12
Aerial	13
Port Stern Profile	13
Starboard Profile	13
Stern	13
Aerial	13
Bow	13
CONTACTS	14
Contact details	14
Telephones	14
Office hours	14
Address	14

SPECIFICATIONS

Overview

Motor Yacht IMPETUOUS is an 85' / 25.91m yacht for sale, built and launched by yacht builder Feadship. Delivered to a knowledgeable yacht owner in 1977 and refit in 2020. This luxury yacht sleeps up to 6 guests in 3 staterooms with accommodations for 3 crew in 1 cabin.

Basic Information

Category: Motor Yacht

Model Year: 1977

Year Built: 1977

Country: United States

Dimensions

LOA: 85' (25.91m)

Beam: 20.5

Max Draft: 6' 3" (1.9m)

Speed, Capacities and Weight

Cruise Speed: 12 Knots Kts. (14 MPH) **Max Speed:** 20 Knots Kts. (23 MPH)

Water Capacity: 930 Gallons

Holding Tank: 200 Gal Gallons

Fuel Capacity: 4100 Gal Gallons

Accommodations

Total Cabins: 3

Sleeps: 6

Crew Cabin: 3

Hull and Deck Information

Hull Material: Aluminum

Hull Configuration: Semi-Displacement

Engine Information

Engines: 2

Manufacturer: MTU

Engine Type: Inboard

Fuel Type: Diesel

PHOTOS

Cockpit



Cockpit



Enclosed Aft Deck



Enclosed Aft Deck



Enclosed Aft Deck



Salon



Salon



Salon



Stairway to Staterooms



Dining Area



Galley



Galley



Galley



Galley



Master Stateroom



Master Stateroom



Master Ensuite



Master Bath



Guest Stateroom



Guest Ensuite



Guest Shower



Guest Stateroom



Guest Ensuite



Guest Shower



Lower Deck Foyer



Pilothouse



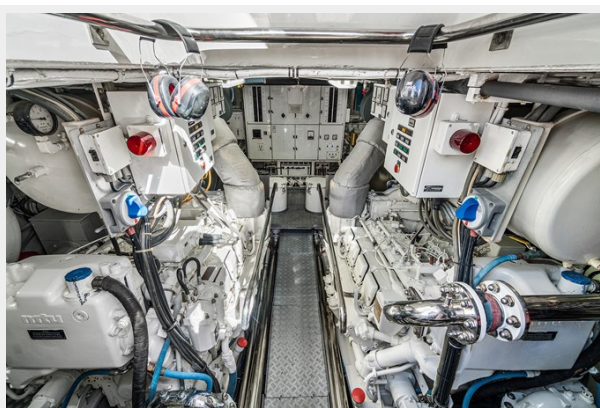
Pilothouse Seating



Starboard Stern Profile



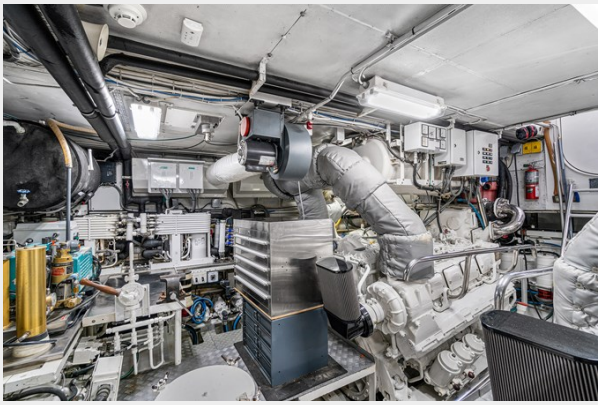
Engine Room



Engine Room



Engine Room



Crew Quarters



Crew Quarters



Crew Cabin



Crew Head



Starboard Bow Profile



Aerial



Port Stern Profile



Starboard Profile



Stern



Aerial



Bow



CONTACTS

Andrey Shestakov, leading yacht broker of the sales department of Shestakov Yacht Sales Inc. Shestakov Yacht Sales Inc., the official representative of the Miami/Fort Lauderdale FL headquarters.

Contact details

Email: **andrey@shestakovyachtsales.com**

Web: shestakovyachtsales.com/en/

Telephones

USA: **+1(954)274-4435**

Office hours

Monday – Saturday: **9:00 - 21:00** EDT

Sunday: **closed**

Address



Harbour Towne Marina, 850 NE 3rd St, STE 213, Dania, FL 33004