

OUT & ABOUT — LITTLE HARBOR



Builder: LITTLE HARBOR

Year Built: 2000

Model: Sport Fisherman

Price: \$349,900 USD

Location: United States

LOA: 52' (15.85mm)

Beam: 16.83

Min Draft: 2' 6" (0.76mm)

Cruise Speed: 18 Knots Kts. (21 MPH)

Max Speed: 21 Knots Kts. (24 MPH)

Our experienced yacht broker, Andrey Shestakov, will help you choose and buy a yacht that best suits your needs **OUT & ABOUT — LITTLE HARBOR** from our catalogue. Presently, at Shestakov Yacht Sales Inc., we have a wide variety of yachts available on our sale's list. We also work in close contact with all the big yacht manufacturers from all over the world.

If you would like to buy a yacht **OUT & ABOUT — LITTLE HARBOR** or would like help answering any questions concerning purchasing, selling or chartering a yacht, please call **+1(954)274-4435**

TABLE OF CONTENTS

TABLE OF CONTENTS	2
SPECIFICATIONS	4
Overview	4
Basic Information	4
Dimensions	4
Speed, Capacities and Weight	5
Accommodations	5
Hull and Deck Information	5
Engine Information	5
PHOTOS	6
Bow and Sunpad	6
Sidedeck	6
Cockpit 1	6
Cockpit 2	6
Cockpit 3	6
FB 1	6
FB 2	7
FB 3	7
FB 4	7
FB Helm Seat	7
FB Dining 2	7
FB Dining	7
Salon Dinette	8
Salon	8
Salon Forward to Helm	8
Helm Seats and Salon	8
Helm 1	8
Helm 2	8

Helm 3	9
Galley 2	9
Galley 1	9
Hallway Drawers	9
Hallway	9
Cabin Forward 1	9
Cabin Forward 2	10
Cabin Guest	10
Head Shower	10
Head Sink	10
CONTACTS	11
Contact details	11
Telephones	11
Office hours	11
Address	11

SPECIFICATIONS

Overview

New Upgrades:

- 6 new transom lights, RGB controls, 8000 lumens per light (x4); 16000 lumens for side light (x2)
- New sliding swim platform ladder, 4 step, installed with new aluminum plates, fibreglassed into platform
- New 5 zone, Fusion, stereo system, speakers and dual amplifiers, one for fighting deck, one for flybridge
- New headliners throughout
- New wall coverings
- New blinds
- New radar unit
- New cushions and upholstery on flybridge, back deck and bow
- New anchor
- Complete new paint job
- New Weber grill
- New linens throughout
- New bimini top and cover
- New TV's in bunk room and salon
- Newly installed individual Garmin GPS map and navigator station with additional maps for the Caribbean
- New Kevlar Hull
- New Furuno 360 degree sonar system - same as commercial fishing vessels

Basic Information

Category: Sport Fisherman

Model Year: 2001

Year Built: 2000

Country: United States

Dimensions

LOA: 52' (15.85mm)

Beam: 16.83

Min Draft: 2' 6" (0.76mm)

Speed, Capacities and Weight

Cruise Speed: 18 Knots Kts. (21 MPH)

Max Speed: 21 Knots Kts. (24 MPH)

Water Capacity: 200 Gallons

Holding Tank: 30 Gal Gallons

Fuel Capacity: 1000 Gal Gallons

Accommodations

Total Cabins: 2

Sleeps: 4

Total Heads: 1

Hull and Deck Information

Hull Material: Kevlar Composite

Deck Material: Fiberglass

Hull Configuration: Deep Vee

Engine Information

Engines: 2

Manufacturer: MTU

Engine Type: Inboard

Fuel Type: Diesel

PHOTOS

Bow and Sunpad



Sidedeck



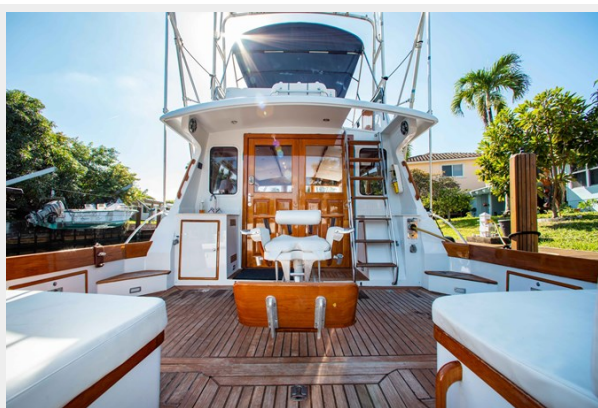
Cockpit 1



Cockpit 2



Cockpit 3



FB 1



FB 2



FB 3



FB 4



FB Helm Seat



FB Dining 2



FB Dining



Salon Dinette



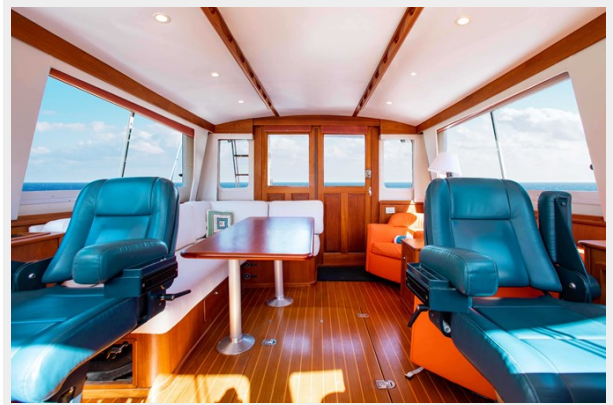
Salon



Salon Forward to Helm



Helm Seats and Salon



Helm 1



Helm 2



Helm 3



Galley 2



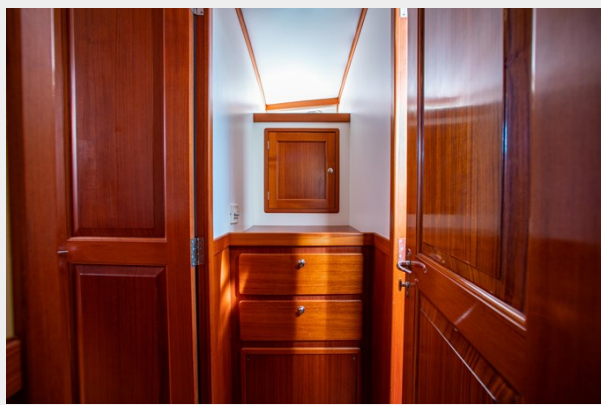
Galley 1



Hallway Drawers



Hallway



Cabin Forward 1



Cabin Forward 2



Cabin Guest



Head Shower



Head Sink



CONTACTS

Andrey Shestakov, leading yacht broker of the sales department of Shestakov Yacht Sales Inc. Shestakov Yacht Sales Inc., the official representative of the Miami/Fort Lauderdale FL headquarters.

Contact details

Email: andrey@shestakovyachtsales.com

Web: shestakovyachtsales.com/en/

Telephones

USA: +1(954)274-4435

Office hours

Monday – Saturday: **9:00 - 21:00** EDT

Sunday: **closed**

Address



Harbour Towne Marina, 850 NE 3rd St,
STE 213, Dania, FL 33004