

HULL #3 300-1 — CUSTOM



Builder: CUSTOM

Year Built: 2025

Model: Motor Yacht

Price: PRICE ON APPLICATION

Location: Italy

LOA: 120' 1" (36.6mm)

Beam: 27.08

Min Draft: 6' 5" (1.96mm)

Max Draft: 7' 5" (2.26mm)

Cruise Speed: 12 Knots Kts. (14 MPH)

Max Speed: 14 Knots Kts. (16 MPH)

Our experienced yacht broker, Andrey Shestakov, will help you choose and buy a yacht that best suits your needs HULL #3 300-1 — CUSTOM from our catalogue. Presently, at Shestakov Yacht Sales Inc., we have a wide variety of yachts available on our sale's list. We also work in close contact with all the big yacht manufacturers from all over the world.

If you would like to buy a yacht HULL #3 300-1 — CUSTOM or would like help answering any questions concerning purchasing, selling or chartering a yacht, please call +1(954)274-4435

TABLE OF CONTENTS

TABLE OF CONTENTS	2
SPECIFICATIONS	3
Overview	3
Basic Information	3
Dimensions	3
Speed, Capacities and Weight	3
Accommodations	4
Hull and Deck Information	4
Engine Information	4
PHOTOS	5
CONTACTS	13
Contact details	13
Telephones	13
Office hours	13
Address	13

SPECIFICATIONS

Overview

K-YACHTS, the innovative range of motor yachts based on the same philosophy and design of K-584, created by Yachting Expertise after 30 years of building experience. Built in steel and aluminum to a design penned by A. Vallicelli & C. Yacht Design, the K-YACHTS sport a “masculine” exterior with “military flavor” and a red stylized “K” towards the bow.

HULL #3 available with an early 2025 delivery. Sister ship to the award winning K-584 Hull #3 can be customized from the interior decor & layout, exterior deck spaces and styling.

Basic Information

Category: Motor Yacht

Sub Category: Expedition or Explorer

Model Year: 2025

Year Built: 2025

Country: Italy

Dimensions

LOA: 120' 1" (36.6mm)

LWL: 113' 2" (34.49mm)

Beam: 27.08

Min Draft: 6' 5" (1.96mm)

Max Draft: 7' 5" (2.26mm)

Speed, Capacities and Weight

Cruise Speed: 12 Knots Kts. (14 MPH)

Cruise Speed Range: 3600

Max Speed: 14 Knots Kts. (16 MPH)

Gross Tonnage: 299 Pounds

Water Capacity: 9500 Gallons

Holding Tank: 1981.29 Gal Gallons

Fuel Capacity: 12548.17 Gal Gallons

Accommodations

Total Cabins: 5

Sleeps: 10

Total Heads: 6

Crew Cabin: 6

Crew Berths: 5

Crew Heads: 3

Hull and Deck Information

Hull Material: Steel

Deck Material: Teak and Steel

Hull Configuration: Displacement w/
Bulbous Bow

Hull Color: CUSTOM

Hull Designer: ANTONIO LONGOBARDI -
YACHTING EXPERTISE

Exterior Designer: A.VALLICELLI & C. -
YACHT DESIGN

Interior Designer: ARCHITECT PIERLUIGI
FLORIS

Engine Information

Engines: 2

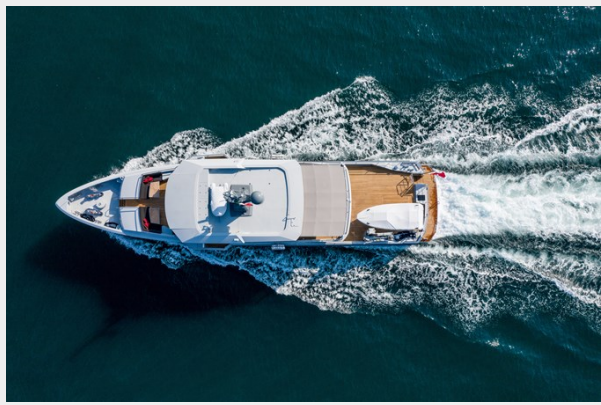
Manufacturer: MAN

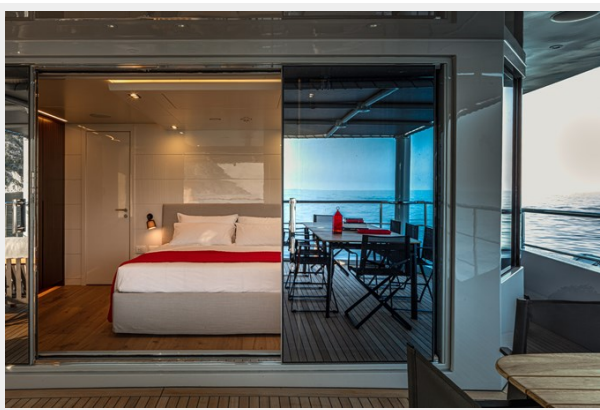
Engine Type: Inboard

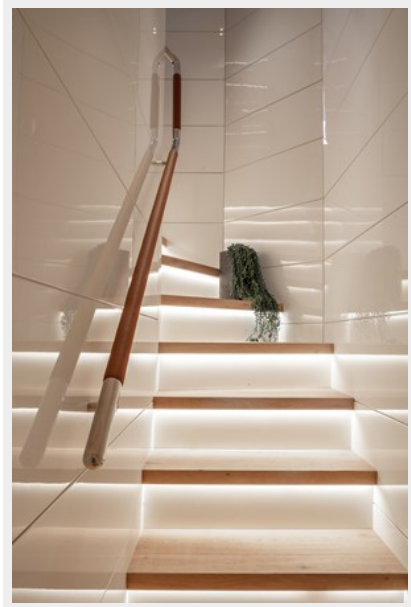
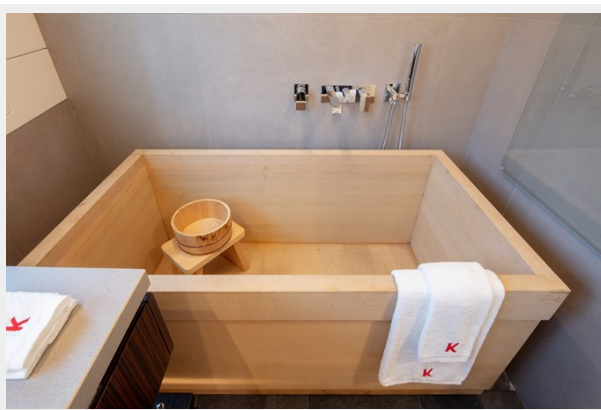
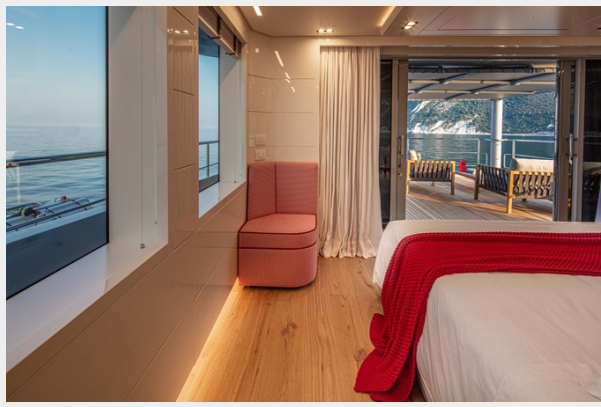
Fuel Type: Diesel

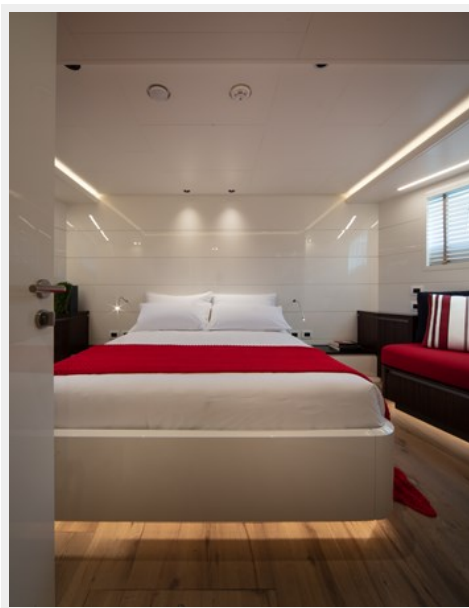
PHOTOS

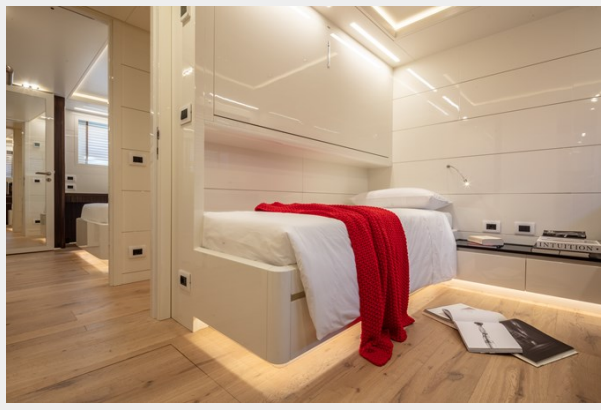




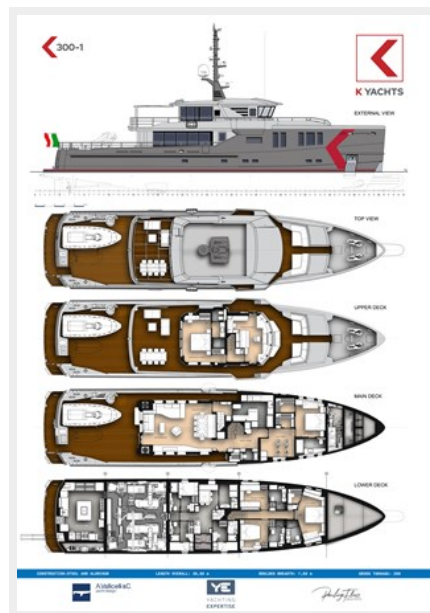
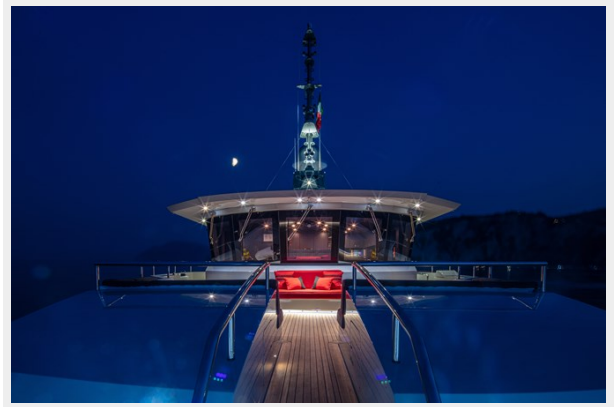












CONTACTS

Andrey Shestakov, leading yacht broker of the sales department of Shestakov Yacht Sales Inc. Shestakov Yacht Sales Inc., the official representative of the Miami/Fort Lauderdale FL headquarters.

Contact details

Email: andrey@shestakovyachtsales.com

Web: shestakovyachtsales.com/en/

Telephones

USA: +1(954)274-4435

Office hours

Monday – Saturday: **9:00 - 21:00** EDT

Sunday: **closed**

Address



Harbour Towne Marina, 850 NE 3rd St,
STE 213, Dania, FL 33004