

## HANG ON SLOOPY — TIARA



**Builder:** [TIARA](#)

**Year Built:** 1998

**Model:** cruiser

**Price:** PRICE ON APPLICATION

**Location:** United States

**LOA:** 50' 7" (15.42mm)

**Beam:** 15.75

**Min Draft:** 0' 11" (0.28mm)

**Max Draft:** 5' 8" (1.73mm)

**Cruise Speed:** 25 Knots Kts. (29 MPH)

**Max Speed:** 31 Knots Kts. (36 MPH)

Our experienced yacht broker, Andrey Shestakov, will help you choose and buy a yacht that best suits your needs **Hang On Sloopy — TIARA** from our catalogue. Presently, at Shestakov Yacht Sales Inc., we have a wide variety of yachts available on our sale's list. We also work in close contact with all the big yacht manufacturers from all over the world.

If you would like to buy a yacht **Hang On Sloopy — TIARA** or would like help answering any questions concerning purchasing, selling or chartering a yacht, please call **+1(954)274-4435**

---

# TABLE OF CONTENTS

---

TABLE OF CONTENTS	2
SPECIFICATIONS	3
Overview	3
Basic Information	4
Dimensions	4
Speed, Capacities and Weight	4
Accommodations	4
Hull and Deck Information	4
Engine Information	5
PHOTOS	6
CONTACTS	16
Contact details	16
Telephones	16
Office hours	16
Address	16

---

# SPECIFICATIONS

---

## Overview

---

### PRICE REDUCTION!

**\$160,000.00**

***THE PRICE IS FIRM! AS IS WHERE IS!***

The 5000 is powered by two CAT 3406 E engines which produce 800hp at 2300rpms. There is a Power-assisted Teleflex hydraulic steering system with a 22" S.S. destroyer helm wheel. Bronze "I" struts and highspeed axe head rudders. Tiara uses Aquamet 22 H.S. 2-3/4" prop shafts and water-cooled, face-seal stuffing boxes. CAT "EMS" dual engine instrumentation gives all vital engine statistics and an oil changing system for engines, transmissions, and generator is standard. The engine room is lined with acoustical insulation and overhead fiberglass liner and lighting system. Other standard equipment includes Racor fuel filters/water separators mounted on S.S. brackets; raw water intake strainers; vibration mounts on the engine and generator; anti-corrosion barrier-coated fuel tanks and two fuel selection valves.

21.5 kw Onan Generator has 2375 hours.

Step aboard a large swim platform big enough to carry a dingy and covered in Sea Deck, up to a large aft deck with comfortable seating for 8 people and then into an ample cock pit area, with yet more seating for a pleasant day on the water.

Companionway entry to port side galley with lots of refrigeration, 3 burner cooktop, and built-in coffee maker.

A large comfortable salon with a drop-down table and beautiful teak hardwood floors. Great for large family/friend gatherings.

One guest cabin with 2 single berths and its own vacuflush head.

Master stateroom with its own spacious full head/shower.

Tiara Yachts always keeps safety in mind during the construction and engineering of all boats, and the 5000 Express is no different. While moving from transom to bow, there are plenty of S.S. grab rails to assist your movement forward. The Tiara Diamond Pattern non-skid helps assure footing, and wide walkways make the transition to the foredeck area safe. A fixed fire extinguisher system manual/automatic is in place as well as handheld extinguishers. Tiara Yachts complies with all U.S.C.G and international navigational lighting and U.S.C.G. and B.I.A. ventilation standards. The yacht is certified by the N.M.M.A. and CE (European)certified.

---

## Basic Information

---

**Category:** cruiser

**Sub Category:** Express

**Model Year:** 1998

**Year Built:** 1998

**Country:** United States

---

## Dimensions

---

**LOA:** 50' 7" (15.42mm)

**Beam:** 15.75

**Min Draft:** 0' 11" (0.28mm)

**Max Draft:** 5' 8" (1.73mm)

---

## Speed, Capacities and Weight

---

**Cruise Speed:** 25 Knots Kts. (29 MPH)

**Max Speed:** 31 Knots Kts. (36 MPH)

**Water Capacity:** 200 Gallons

**Holding Tank:** 80 Gal Gallons

**Fuel Capacity:** 350 Gal Gallons

---

## Accommodations

---

**Total Cabins:** 2

**Total Berths:** 2

**Total Heads:** 2

---

## Hull and Deck Information

---

**Hull Material:** Fiberglass

---

## Engine Information

---

**Engines:** 2

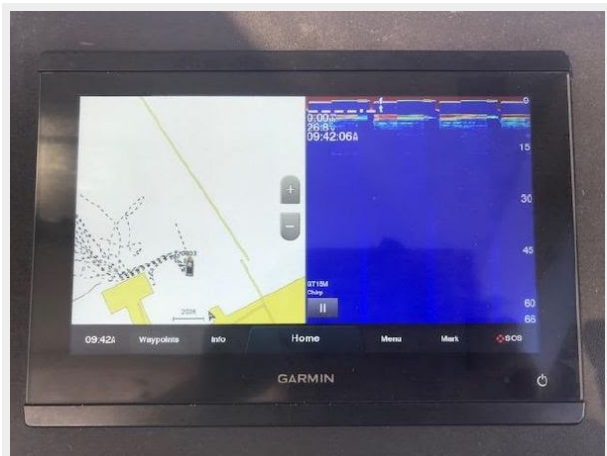
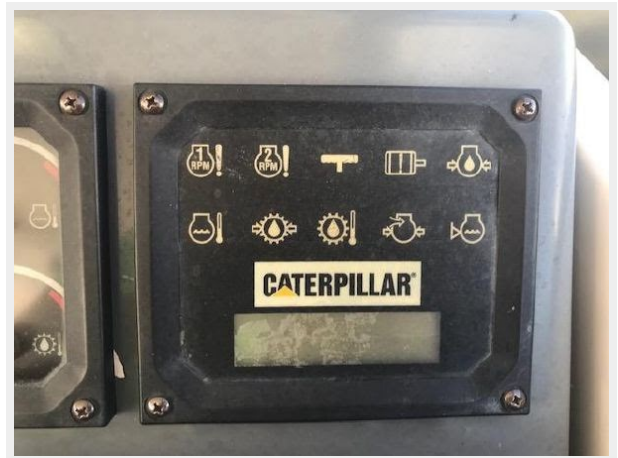
**Manufacturer:** Caterpillar

**Engine Type:** Inboard

**Fuel Type:** Diesel

# PHOTOS



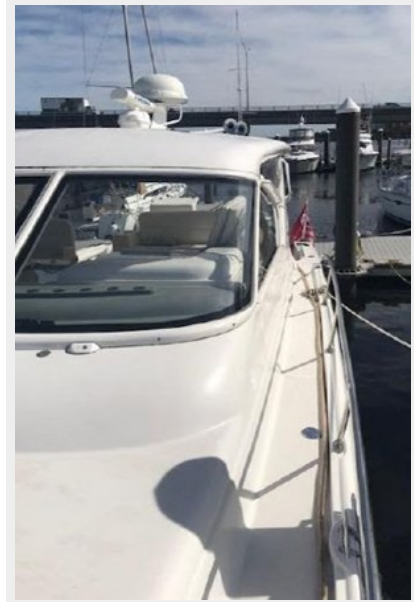
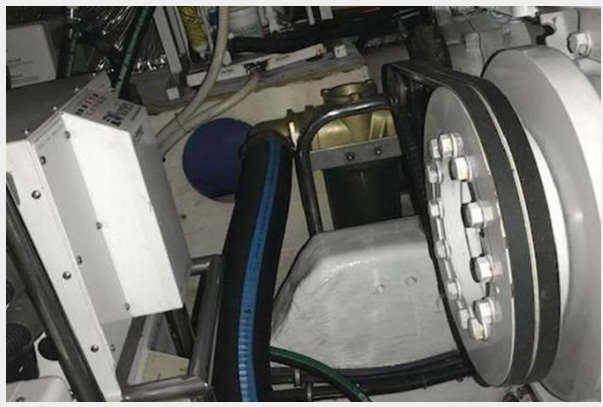


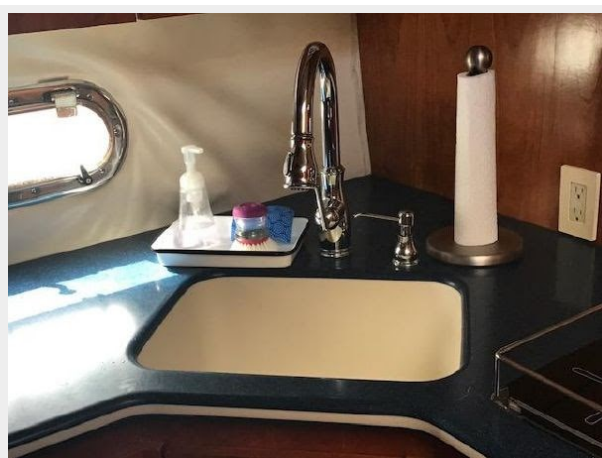
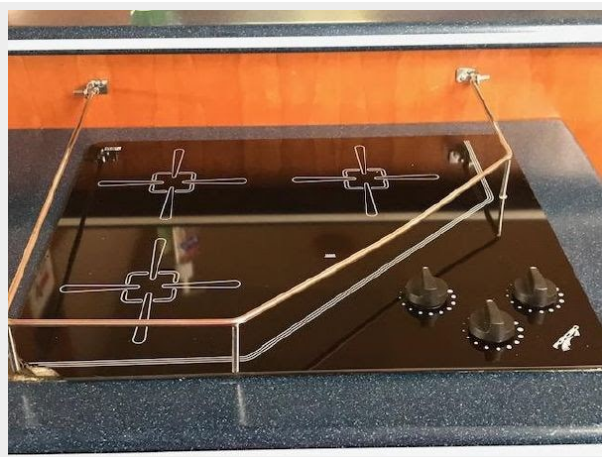


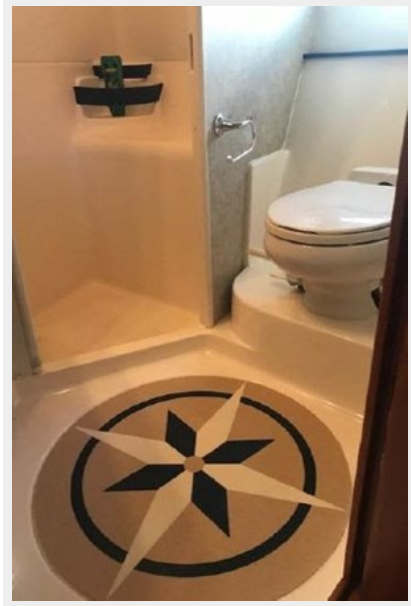
















# CONTACTS

---

Andrey Shestakov, leading yacht broker of the sales department of Shestakov Yacht Sales Inc. Shestakov Yacht Sales Inc., the official representative of the Miami/Fort Lauderdale FL headquarters.

## Contact details

---

Email: [andrey@shestakovyachtsales.com](mailto:andrey@shestakovyachtsales.com)

Web: [shestakovyachtsales.com/en/](http://shestakovyachtsales.com/en/)

## Telephones

---

USA: +1(954)274-4435

## Office hours

---

Monday – Saturday: **9:00 - 21:00** EDT

Sunday: **closed**

## Address

---



Harbour Towne Marina, 850 NE 3rd St,  
STE 213, Dania, FL 33004