

SHADOW — COMAR



Builder: COMAR

Year Built: 2011

Model: Sloop

Price: PRICE ON APPLICATION

LOA: 101' 9" (31mm)

Beam: 22.01

Min Draft: 8' 3" (2.5mm)

Max Draft: 16' 5" (5mm)

Cruise Speed: 10 Knots Kts. (12 MPH)

Max Speed: 12 Knots Kts. (14 MPH)

Our experienced yacht broker, Andrey Shestakov, will help you choose and buy a yacht that best suits your needs **Shadow — COMAR** from our catalogue. Presently, at Shestakov Yacht Sales Inc., we have a wide variety of yachts available on our sale's list. We also work in close contact with all the big yacht manufacturers from all over the world.

If you would like to buy a yacht **Shadow — COMAR** or would like help answering any questions concerning purchasing, selling or chartering a yacht, please call **+1(954)274-4435**

TABLE OF CONTENTS

TABLE OF CONTENTS	2
SPECIFICATIONS	3
Overview	3
Basic Information	3
Dimensions	3
Speed, Capacities and Weight	4
Accommodations	4
Hull and Deck Information	4
Engine Information	4
PHOTOS	5
CONTACTS	15
Contact details	15
Telephones	15
Office hours	15
Address	15

SPECIFICATIONS

Overview

Shadow is a Comet 100 RS sailing yacht built in 2011 by the Italian Shipyard Comar Yachts. With one, highly experienced owner from new, she was built to cruise the world in comfort. Built in carbon sandwich with Corecell core, she is a solid and safe yacht; seaworthy in all weather conditions. Andrea Valicelli designed a powerful hull combined with an elegant deck saloon with large windows, double cockpit and big open deck spaces for safety while sailing and comfort when relaxing. The interior is in beautiful teak with great attention to detail creating a warm and spacious feel. The comfortable interior is laid out to provide privacy when needed and is practical for crew and guests when underway. Equipped with a Hall Spars carbon rig, Cariboni hydraulic lifting keel, Harken deck gear and Doyle Sails, she is a no-compromise sailing yacht with all the luxury on board you can think of. Shadow has been maintained to the highest standards and continuously upgraded, ready to cruise the world in style and comfort.

KEY FEATURES:

- Equipped for long cruises both above and below deck
- Ballasted Cariboni hydraulic lifting keel to discover shallow corners
- Advanced composite construction and a carbon Hall Spars mast for optimum performance
- Plenty of deck space to relax in the open
- Contemporary teak interior finish and layout for maximum comfort
- Privately used and maintained to the highest standards
- Ready to cruise the world or participate in one of the great sailing events

Basic Information

Category: Sloop

Model Year: 2011

Year Built: 2011

Dimensions

LOA: 101' 9" (31mm)

Beam: 22.01

Min Draft: 8' 3" (2.5mm)

Max Draft: 16' 5" (5mm)

Speed, Capacities and Weight

Cruise Speed: 10 Knots Kts. (12 MPH)

Max Speed: 12 Knots Kts. (14 MPH)

Water Capacity: 2000 Gallons

Fuel Capacity: 726.47 Gal Gallons

Accommodations

Total Cabins: 4

Sleeps: 8

Total Heads: 1

Crew Cabin: 5

Crew Berths: 4

Crew Heads: 3

Hull and Deck Information

Hull Material: Carbon Composite

Hull Configuration: Monohull

Hull Color: Silver

Hull Designer: Andrea Vallicelli

Exterior Designer: Andrea Vallicelli

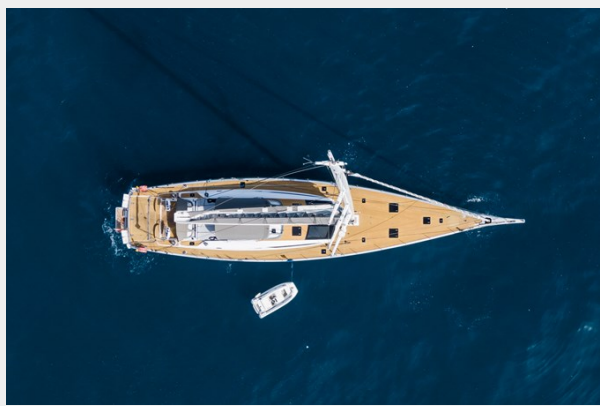
Engine Information

Engines: 1

Manufacturer: John Deere

Fuel Type: Diesel

PHOTOS



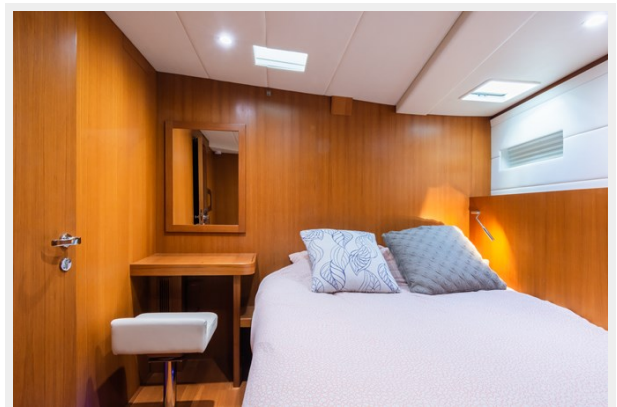


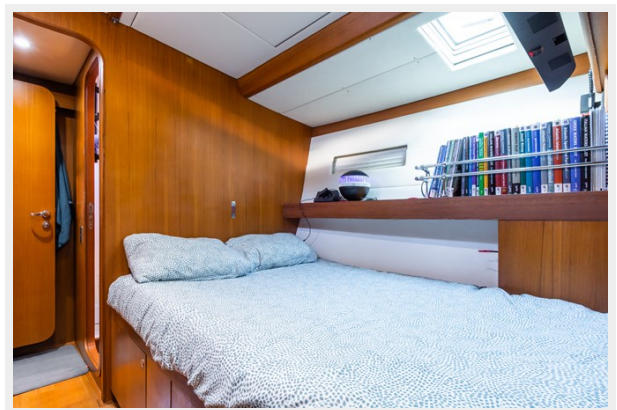


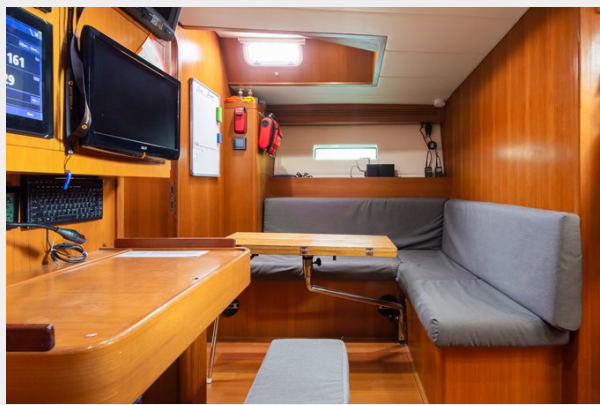














CONTACTS

Andrey Shestakov, leading yacht broker of the sales department of Shestakov Yacht Sales Inc. Shestakov Yacht Sales Inc., the official representative of the Miami/Fort Lauderdale FL headquarters.

Contact details

Email: andrey@shestakovyachtsales.com

Web: shestakovyachtsales.com/en/

Telephones

USA: +1(954)274-4435

Office hours

Monday – Saturday: **9:00 - 21:00** EDT

Sunday: **closed**

Address



Harbour Towne Marina, 850 NE 3rd St,
STE 213, Dania, FL 33004