

# EAT, DRINK, AND REMARRY — CHRIS-CRAFT



**Builder:** CHRIS-CRAFT

**Year Built:** 1988

**Model:** Motor Yacht

**Price:** PRICE ON APPLICATION

**Location:** United States

**LOA:** 38' (11.58mm)

**Beam:** 14

**Max Draft:** 3' (0.91mm)

**Cruise Speed:** 16 Knots Kts. (18 MPH)

**Max Speed:** 26 Knots Kts. (30 MPH)

Our experienced yacht broker, Andrey Shestakov, will help you choose and buy a yacht that best suits your needs **Eat, Drink, and Remarry — CHRIS-CRAFT** from our catalogue. Presently, at Shestakov Yacht Sales Inc., we have a wide variety of yachts available on our sale's list. We also work in close contact with all the big yacht manufacturers from all over the world.

If you would like to buy a yacht **Eat, Drink, and Remarry — CHRIS-CRAFT** or would like help answering any questions concerning purchasing, selling or chartering a yacht, please call **+1(954)274-4435**

# TABLE OF CONTENTS

TABLE OF CONTENTS	2
SPECIFICATIONS	4
Overview	4
Basic Information	4
Dimensions	4
Speed, Capacities and Weight	5
Accommodations	5
Hull and Deck Information	5
Engine Information	5
PHOTOS	6
2	6
3	6
4	6
5	6
6	7
7	7
8	7
9	7
10	7
11	7
12	8
13	8
14	8
15	8
16	8
17	8
18	9
19	9

---

20	9
21	9
22	9
23	9
24	10
25	10
26	10
27	10
28	10
29	10
30	11
31	11
32	11
33	11
34	11
35	11
36	12
37	12
38	12
39	12
40	12
CONTACTS	13
Contact details	13
Telephones	13
Office hours	13
Address	13

---

# SPECIFICATIONS

---

## Overview

---

### NEW TO THE MARKET A 1987 CHRIS-CRAFT AFT CABIN

The Chris Craft 381 Catalina is an enlarged version of the company's popular 350 Catalina introduced a few years earlier. A huge sales success, the 381 combines a very spacious interior with the solid, near bulletproof construction Chris Craft boats were known for in the early 1980s. Boasting a wide 14-foot beam, the galley-up interior of the Chris Craft 381 features an expansive salon with convertible settee and portside deck door, full-service galley with generous storage, and two comfortable staterooms. Note the tub/shower in the aft head. A king bed—rare in a boat this size—became available in the master stateroom in 1983. Topside, walkaround decks provide convenience and safety to crew and guests, and the molded foredeck bench seat is the place to be on a sunny day. With no flybridge, the 381's combined helm/aft deck area eliminates troublesome ladders and keeps captain and guests close together. Additional features include a very spacious engine room, an aft deck wet bar with icemaker and refrigerator, swim platform, and a boarding ladder. She'll cruise at 16 knots with standard 350hp Crusader gas engines and reach a top speed of 25–26 knots.

## Basic Information

---

**Category:** Motor Yacht

**Sub Category:** Aft Cabin

**Model Year:** 1988

**Year Built:** 1988

**Country:** United States

## Dimensions

---

**LOA:** 38' (11.58mm)

**Beam:** 14

**Max Draft:** 3' (0.91mm)

---

## Speed, Capacities and Weight

---

**Cruise Speed:** 16 Knots Kts. (18 MPH)

**Max Speed:** 26 Knots Kts. (30 MPH)

**Water Capacity:** 65 Gallons

**Holding Tank:** 75 Gal Gallons

**Fuel Capacity:** 410 Gal Gallons

---

## Accommodations

---

**Total Cabins:** 2

**Total Heads:** 2

---

## Hull and Deck Information

---

**Hull Material:** Fiberglass

---

## Engine Information

---

**Engines:** 2

**Manufacturer:** Crusader

**Engine Type:** Inboard

**Fuel Type:** Gas/Petrol

# PHOTOS

2



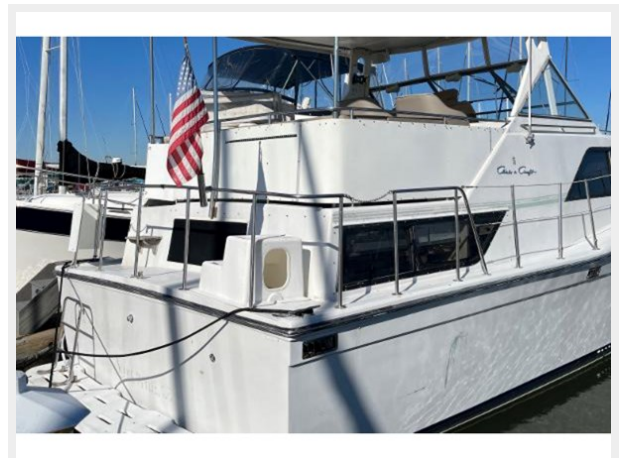
3



4



5



6



7



8



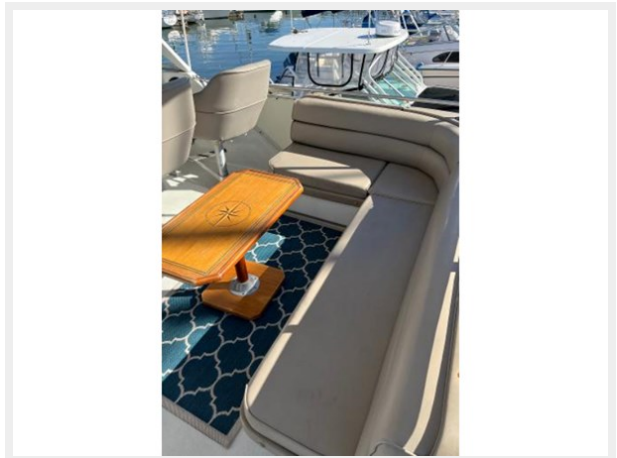
9



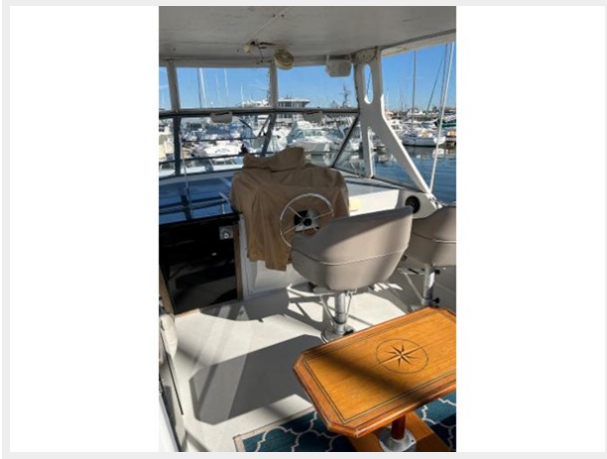
10



11



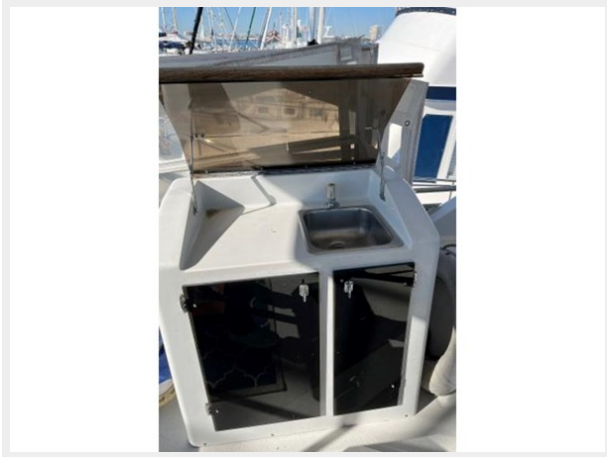
12



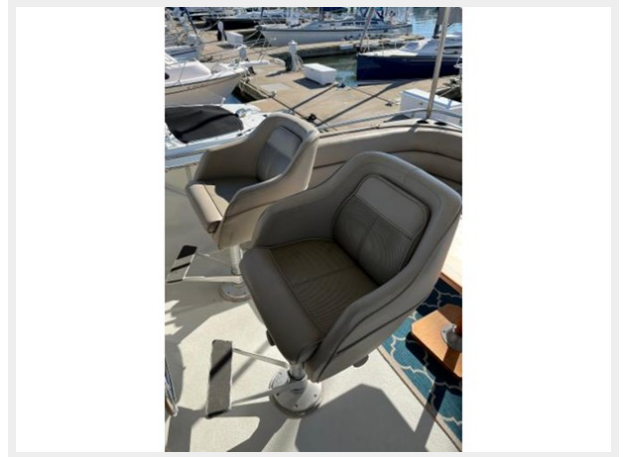
13



14



15



16



17





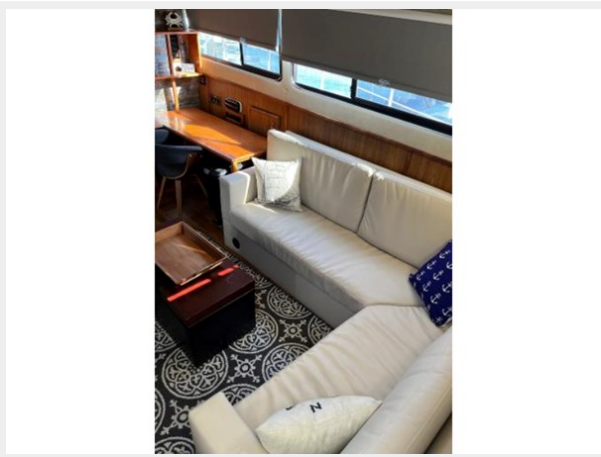
18



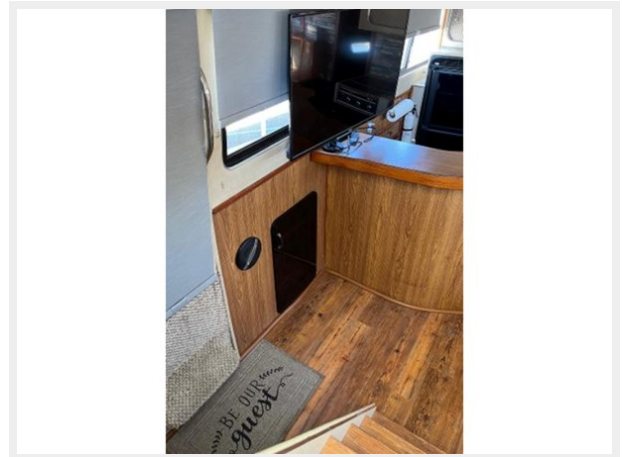
19



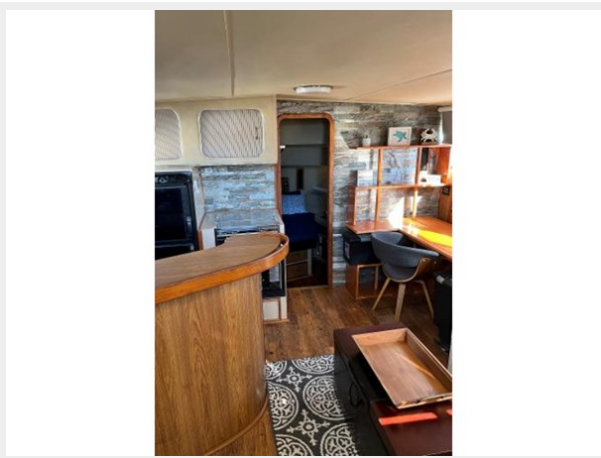
20



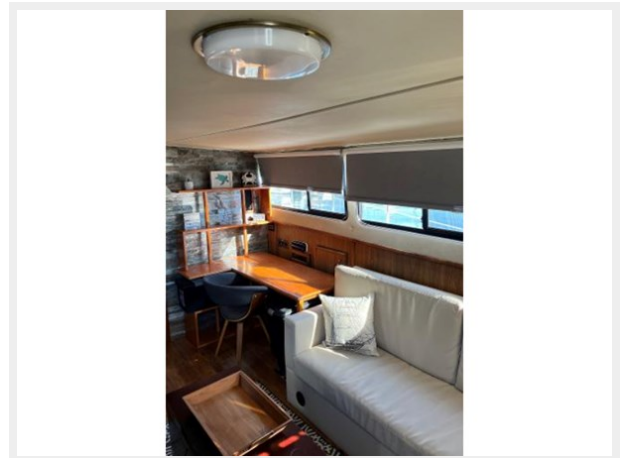
21



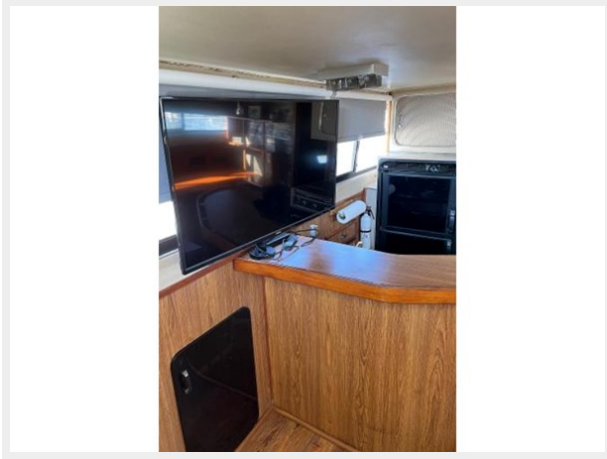
22



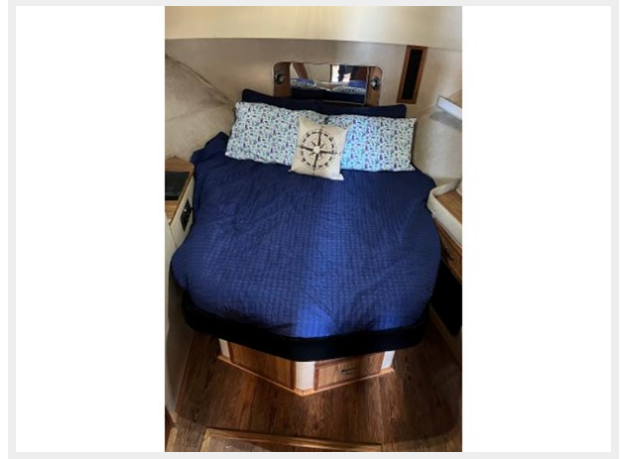
23



24



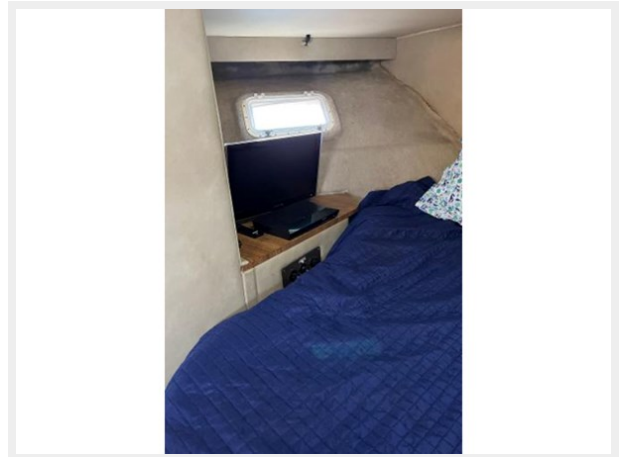
25



26



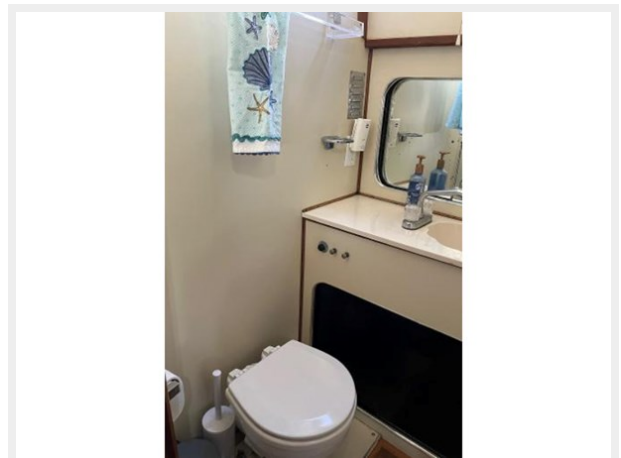
27



28



29



30



31



32



33



34



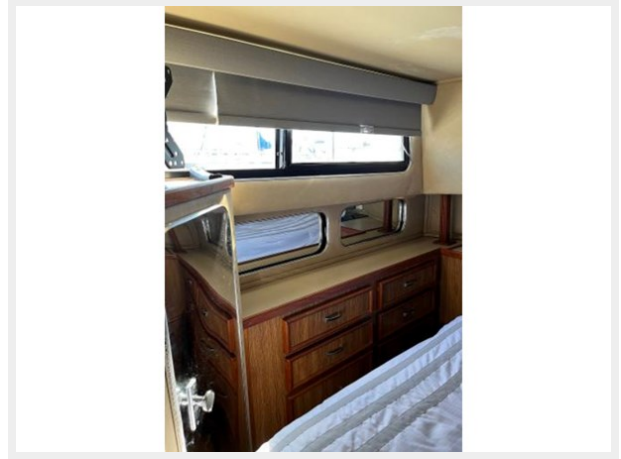
35



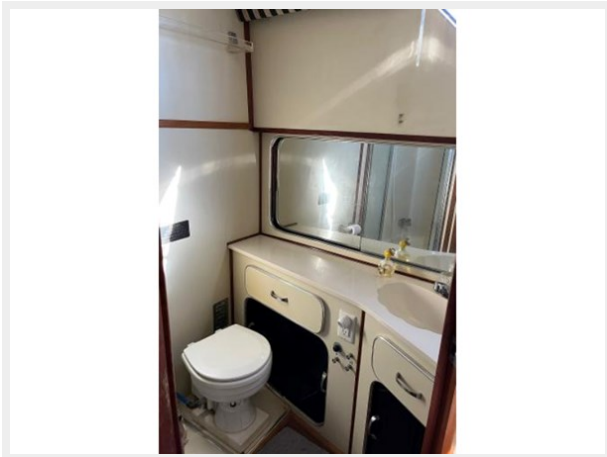
36



37



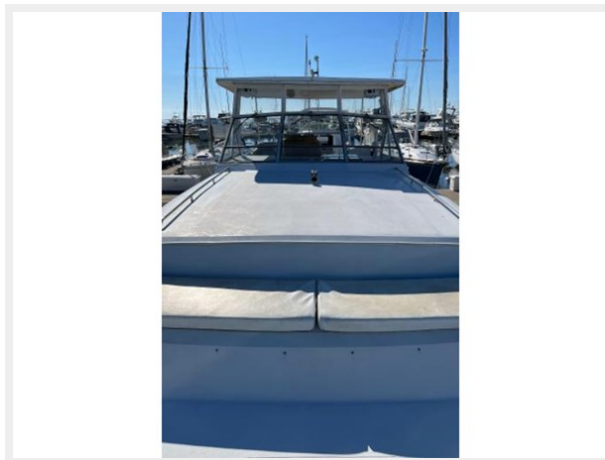
38



39



40



---

# CONTACTS

---

Andrey Shestakov, leading yacht broker of the sales department of Shestakov Yacht Sales Inc. Shestakov Yacht Sales Inc., the official representative of the Miami/Fort Lauderdale FL headquarters.

---

## Contact details

---

Email: [andrey@shestakovyachtsales.com](mailto:andrey@shestakovyachtsales.com)

Web: [shestakovyachtsales.com/en/](http://shestakovyachtsales.com/en/)

---

## Telephones

---

USA: +1(954)274-4435

---

## Office hours

---

Monday – Saturday: **9:00 - 21:00** EDT

Sunday: **closed**

---

## Address

---



Harbour Towne Marina, 850 NE 3rd St,  
STE 213, Dania, FL 33004