

## DITCH DIGGER — VIKING



**Builder:** VIKING

**Year Built:** 2005

**Model:** Sport Fisherman

**Price:** PRICE ON APPLICATION

**Location:** United States

**LOA:** 48' 10" (14.88m)

**Beam:** 16.5

**Max Draft:** 4' 9" (1.45m)

**Cruise Speed:** 30 Knots Kts. (35 MPH)

**Max Speed:** 35 Knots Kts. (40 MPH)

Our experienced yacht broker, Andrey Shestakov, will help you choose and buy a yacht that best suits your needs **Ditch Digger — VIKING** from our catalogue. Presently, at Shestakov Yacht Sales Inc., we have a wide variety of yachts available on our sale's list. We also work in close contact with all the big yacht manufacturers from all over the world.

If you would like to buy a yacht **Ditch Digger — VIKING** or would like help answering any questions concerning purchasing, selling or chartering a yacht, please call **+1(954)274-4435**

# TABLE OF CONTENTS

TABLE OF CONTENTS	2
SPECIFICATIONS	5
Overview	5
Basic Information	5
Dimensions	5
Speed, Capacities and Weight	5
Accommodations	6
Hull and Deck Information	6
Engine Information	6
PHOTOS	7
2	7
3	7
4	7
5	7
6	7
7	7
8	8
9	8
10	8
11	8
12	8
13	8
14	9
15	9
16	9
17	9
18	9
19	9

---

20	10
21	10
22	10
23	10
24	10
25	10
26	11
27	11
28	11
29	11
30	11
31	11
32	12
33	12
34	12
35	12
36	12
37	12
38	13
39	13
40	13
41	13
42	13
43	13
44	14
45	14
46	14
47	14
48	14

---

---

49	14
50	15
51	15
52	15
53	15
54	15
55	15
56	16
57	16
58	16
59	16
CONTACTS	17
Contact details	17
Telephones	17
Office hours	17
Address	17

---

# SPECIFICATIONS

---

## Overview

---

*"...yet another example of why Viking so dominates the market for premium, executive-class convertibles." PowerBoat Guide*

**"Ditch Digger" is a beautiful and well maintained example of the classic Viking 48 Convertible with the optional Three-Stateroom Two-Head layout. She features twin MAN Diesels rated at 1100 HP each, Upgraded Electronics, Tuna Tower, and more.**

***"Ditch Digger" has been maintained by a certified MAN dealer since new, all services completed when required, including a very recent (July 2022) full MAN service.***

**Please check the Full Specs for more details and information! This listing is not located at our office docks, please call for showing instructions!**

---

## Basic Information

**Category:** Sport Fisherman

**Model Year:** 2005

**Year Built:** 2005

**Country:** United States

---

## Dimensions

**LOA:** 48' 10" (14.88mm)

**Beam:** 16.5

**Max Draft:** 4' 9" (1.45mm)

---

## Speed, Capacities and Weight

**Cruise Speed:** 30 Knots Kts. (35 MPH)

**Max Speed:** 35 Knots Kts. (40 MPH)

**Water Capacity:** 175 Gallons

**Holding Tank:** 50 Gal Gallons

**Fuel Capacity:** 1012 Gal Gallons

---

## Accommodations

---

**Total Cabins:** 3

**Total Heads:** 2

---

## Hull and Deck Information

---

**Hull Material:** Fiberglass

---

## Engine Information

---

**Engines:** 2

**Manufacturer:** MAN

**Engine Type:** Inboard

**Fuel Type:** Diesel

# PHOTOS

2



3



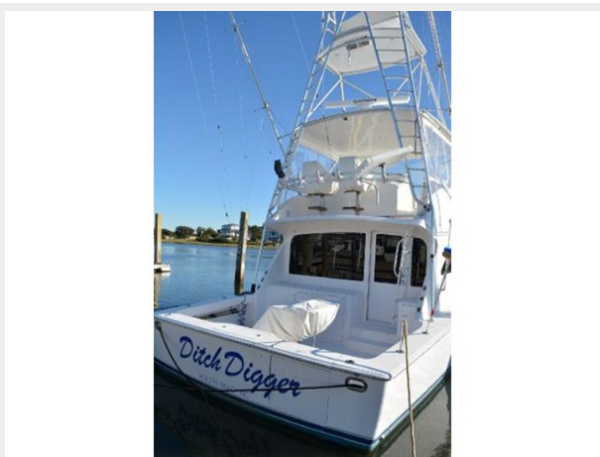
4



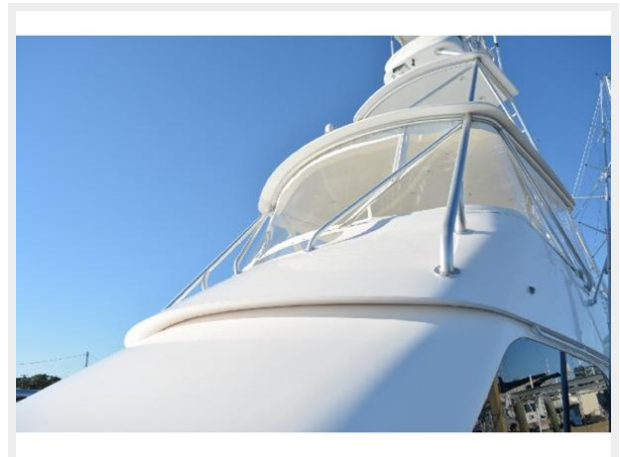
5



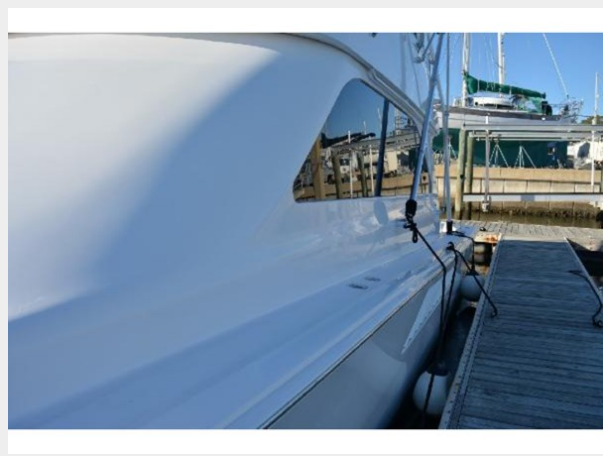
6



7



8



9



10



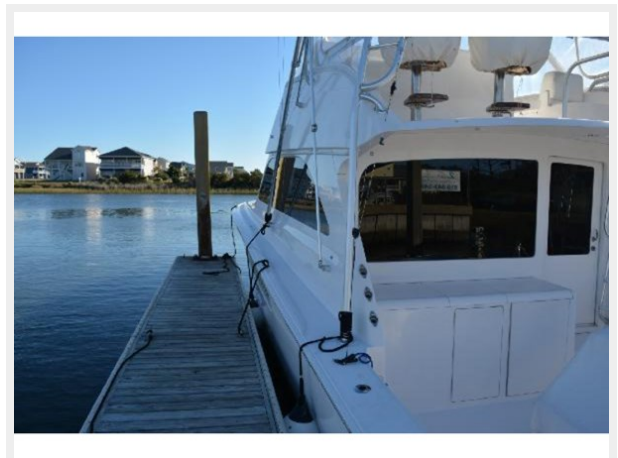
11



12

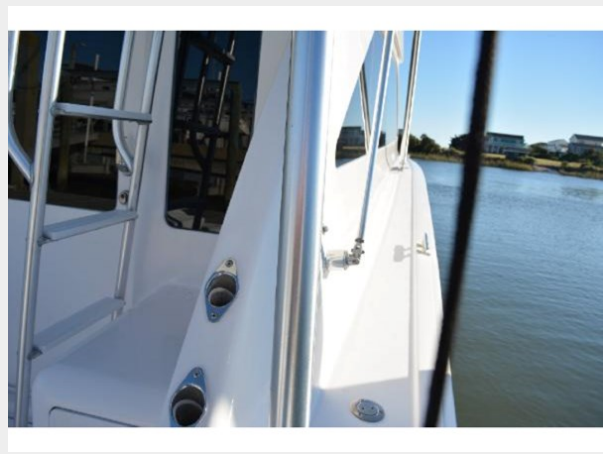


13

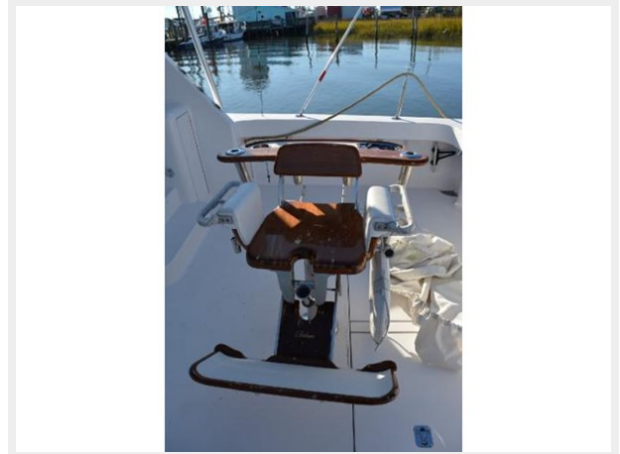




14



15



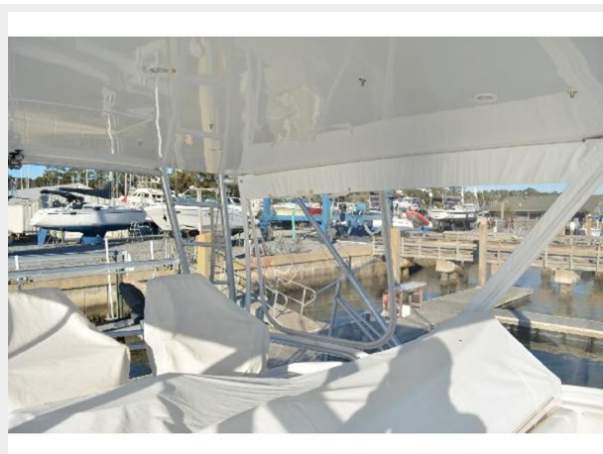
16



17



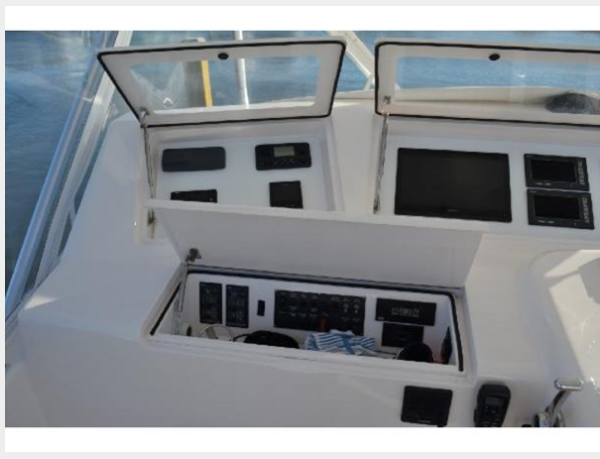
18



19



20



21



22



23



24



25



26



27



28



29



30



31



32



33



34



35



36



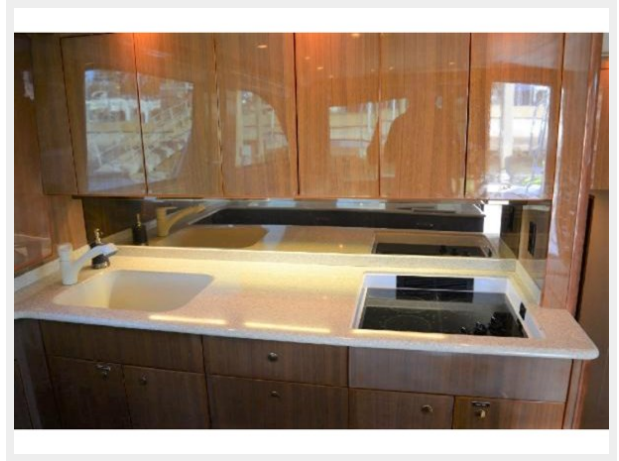
37



38



39



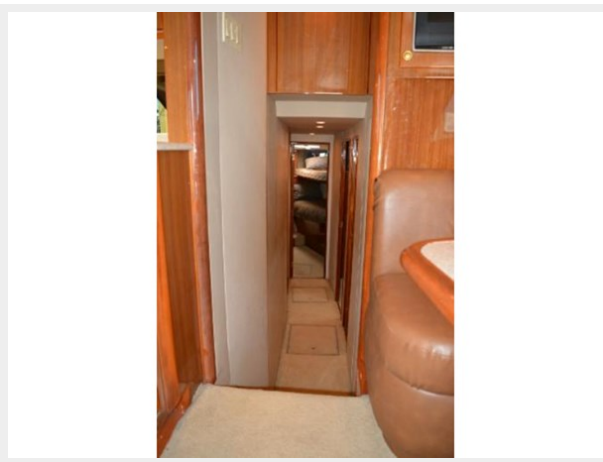
40



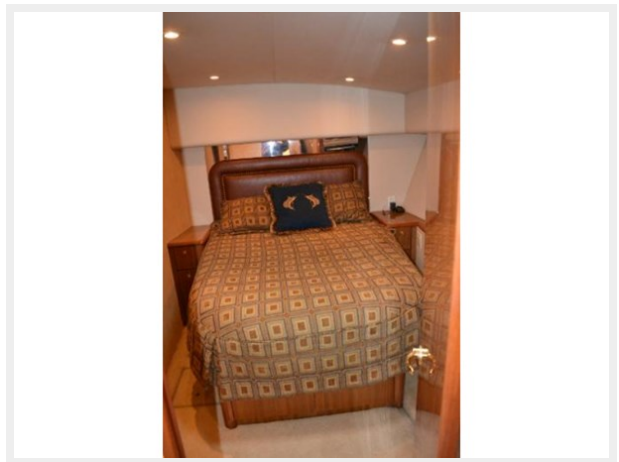
41



42



43



44



45



46



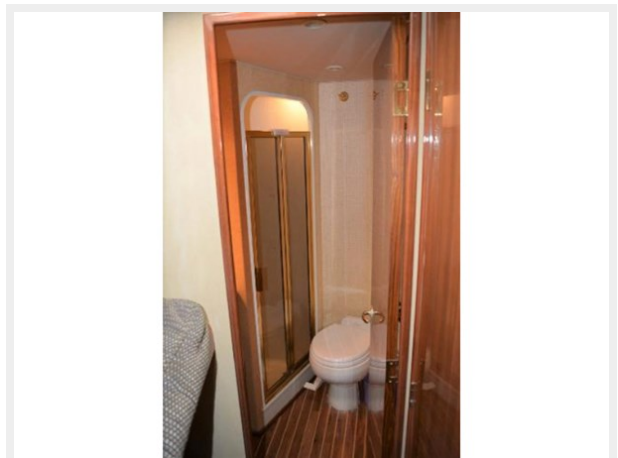
47



48



49



50



51



52



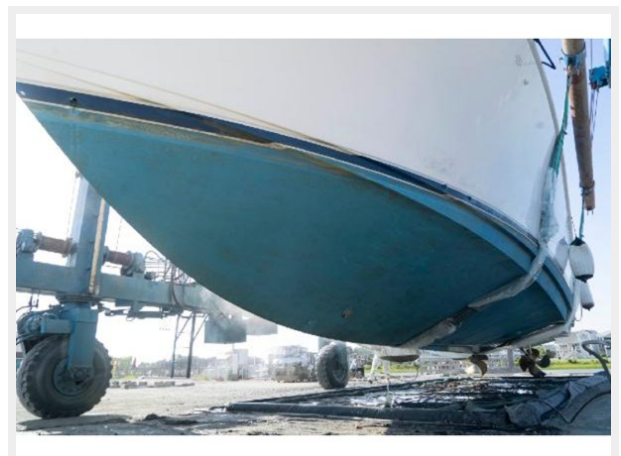
53



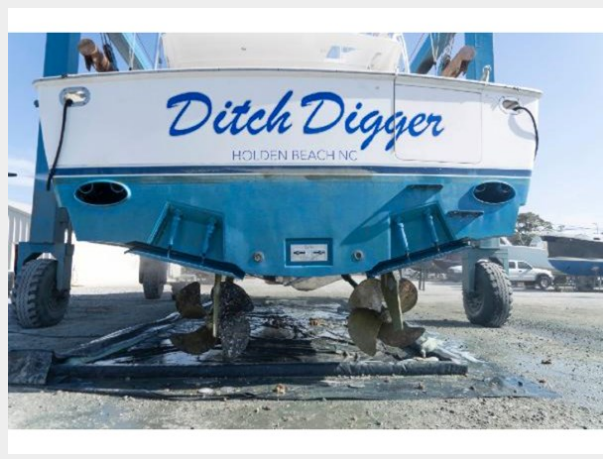
54



55



56



57



58



59





# CONTACTS

---

Andrey Shestakov, leading yacht broker of the sales department of Shestakov Yacht Sales Inc. Shestakov Yacht Sales Inc., the official representative of the Miami/Fort Lauderdale FL headquarters.

## Contact details

---

Email: [andrey@shestakovyachtsales.com](mailto:andrey@shestakovyachtsales.com)

Web: [shestakovyachtsales.com/en/](http://shestakovyachtsales.com/en/)

## Telephones

---

USA: +1(954)274-4435

## Office hours

---

Monday – Saturday: **9:00 - 21:00** EDT

Sunday: **closed**

## Address

---



Harbour Towne Marina, 850 NE 3rd St,  
STE 213, Dania, FL 33004