

## ARIES — CAMPER & NICHOLSONS



**Builder:** CAMPER & NICHOLSONS

**Year Built:** 1952

**Model:** Classic Yacht

**Price:** PRICE ON APPLICATION

**Location:** Netherlands

**LOA:** 114' 10" (35mm)

**Beam:** 20.01

**Min Draft:** 12' 8" (3.85mm)

**Cruise Speed:** 8 Knots Kts. (9 MPH)

**Max Speed:** 10 Knots Kts. (12 MPH)

Our experienced yacht broker, Andrey Shestakov, will help you choose and buy a yacht that best suits your needs **Aries — CAMPER & NICHOLSONS** from our catalogue. Presently, at Shestakov Yacht Sales Inc., we have a wide variety of yachts available on our sale's list. We also work in close contact with all the big yacht manufacturers from all over the world.

If you would like to buy a yacht **Aries — CAMPER & NICHOLSONS** or would like help answering any questions concerning purchasing, selling or chartering a yacht, please call **+1(954)274-4435**

# TABLE OF CONTENTS

TABLE OF CONTENTS	2
SPECIFICATIONS	4
Basic Information	4
Dimensions	4
Speed, Capacities and Weight	4
Accommodations	4
Hull and Deck Information	5
Engine Information	5
PHOTOS	6
White Heather older picture	6
IMG_7477	6
IMG_7478	6
IMG_7479	6
IMG_7483	6
IMG_7484	6
IMG_7488	7
IMG_7499	7
IMG_7508	7
IMG_7512	7
IMG_7518	7
IMG_7521	7
IMG_7522	7
IMG_7526	7
IMG_7529	8
IMG_7531	8
IMG_7537	8
IMG_7540	8
IMG_7544	8

---

IMG_7556	8
IMG_7334	8
IMG_7338	8
IMG_7339	9
IMG_7340	9
IMG_7341	9
IMG_7345	9
IMG_7348	9
IMG_7352	9
IMG_7460	9
IMG_7463	9
IMG_7466	10
IMG_7593	10
CONTACTS	11
Contact details	11
Telephones	11
Office hours	11
Address	11

---

---

# SPECIFICATIONS

---

## Basic Information

---

**Category:** Classic Yacht

**Model Year:** 1952

**Year Built:** 1952

**Refit Type:** interior

**Country:** Netherlands

## Dimensions

---

**LOA:** 114' 10" (35mm)

**LWL:** 70' 8" (21.52mm)

**LOD:** 98' 6" (30mm)

**Beam:** 20.01

**Min Draft:** 12' 8" (3.85mm)

## Speed, Capacities and Weight

---

**Cruise Speed:** 8 Knots Kts. (9 MPH)

**Max Speed:** 10 Knots Kts. (12 MPH)

**Water Capacity:** 3600 Gallons

**Fuel Capacity:** 1585.03 Gal Gallons

## Accommodations

---

**Total Cabins:** 5

**Total Berths:** 10

**Sleeps:** 10

**Total Heads:** 6

**Crew Cabin:** 4

**Crew Berths:** 4

**Crew Heads:** 1

---

## Hull and Deck Information

---

**Hull Material:** Teak

**Deck Material:** Teak

**Hull Configuration:** Long Keel

**Hull Color:** white

**Hull Designer:** Camper & Nicholson

**Exterior Designer:** Camper & Nicholson

---

## Engine Information

---

**Engines:** 1

**Manufacturer:** Cummins

# PHOTOS

**White Heather older picture**



**IMG\_7477**



**IMG\_7478**



**IMG\_7479**



**IMG\_7483**



**IMG\_7484**



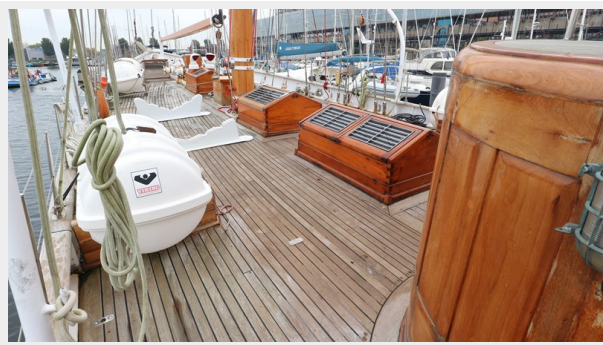
IMG\_7488



IMG\_7499



IMG\_7508



IMG\_7512



IMG\_7518



IMG\_7521



IMG\_7522



IMG\_7526



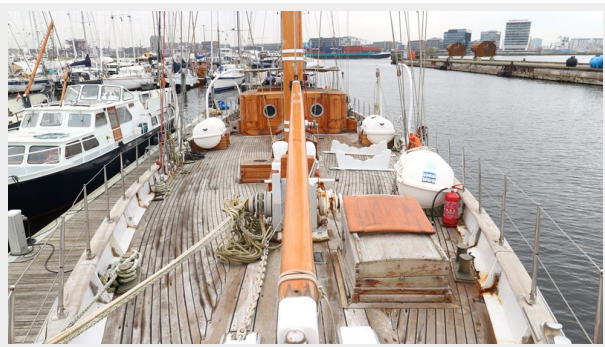
IMG\_7529



IMG\_7531



IMG\_7537



IMG\_7540



IMG\_7544



IMG\_7556



IMG\_7334



IMG\_7338

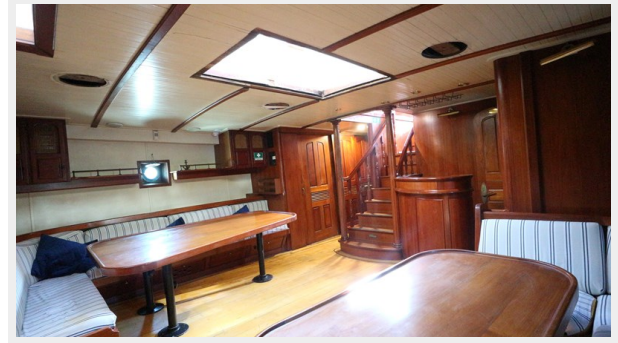




IMG\_7339



IMG\_7340



IMG\_7341



IMG\_7345



IMG\_7348



IMG\_7352



IMG\_7460



IMG\_7463



IMG\_7466



IMG\_7593



# CONTACTS

---

Andrey Shestakov, leading yacht broker of the sales department of Shestakov Yacht Sales Inc. Shestakov Yacht Sales Inc., the official representative of the Miami/Fort Lauderdale FL headquarters.

## Contact details

---

Email: [andrey@shestakovyachtsales.com](mailto:andrey@shestakovyachtsales.com)

Web: [shestakovyachtsales.com/en/](http://shestakovyachtsales.com/en/)

## Telephones

---

USA: +1(954)274-4435

## Office hours

---

Monday – Saturday: **9:00 - 21:00** EDT

Sunday: **closed**

## Address

---



Harbour Towne Marina, 850 NE 3rd St,  
STE 213, Dania, FL 33004