

## SEA EO — LOWLAND



**Builder:** LOWLAND

**Year Built:** 1985

**Model:** trawler

**Price:** PRICE ON APPLICATION

**Location:** United States

**LOA:** 68' 1" (20.75mm)

**Beam:** 19.5

**Max Draft:** 6' 5" (1.96mm)

**Cruise Speed:** 8 Knots Kts. (9 MPH)

**Max Speed:** 9 Knots Kts. (10 MPH)

Our experienced yacht broker, Andrey Shestakov, will help you choose and buy a yacht that best suits your needs **Sea EO — LOWLAND** from our catalogue. Presently, at Shestakov Yacht Sales Inc., we have a wide variety of yachts available on our sale's list. We also work in close contact with all the big yacht manufacturers from all over the world.

If you would like to buy a yacht **Sea EO — LOWLAND** or would like help answering any questions concerning purchasing, selling or chartering a yacht, please call **+1(954)274-4435**

---

# TABLE OF CONTENTS

---

TABLE OF CONTENTS	2
SPECIFICATIONS	3
Overview	3
Basic Information	3
Dimensions	3
Speed, Capacities and Weight	4
Accommodations	4
Hull and Deck Information	4
Engine Information	4
PHOTOS	5
CONTACTS	14
Contact details	14
Telephones	14
Office hours	14
Address	14

---

# SPECIFICATIONS

---

## Overview

---

1985 Lowland Trawler Sea EO has arrived in Fort Lauderdale and she is brand new to the market! Lowland Yachts of the Netherlands has a reputation for building custom high end metal yachts. Sea EO is a 1985 model and she was built from steel. This long-range cruiser is powered by twin Gardner Diesels and she holds 3000 gallons of fuel. The yacht's traditional interior has been tastefully updated. There are three staterooms plus a well-designed crew quarter, built for two, located forward. Other noteworthy features include twin generators, stabilizers, watermaker and walk around side decks.

Sea EO has always been a well-maintained yacht. The most recent upgrade in fall 2021 was the new substantial aluminum custom Bimini for the flybridge and aft deck plus all new canvas cushions and covers for the exterior.

Sea EO is docked off Riverland Road, convenient for client showings and broker previews.

WILL ACCEPT CLEAN TRADES

## Basic Information

---

**Category:** trawler

**Model Year:** 1985

**Year Built:** 1985

**Country:** United States

## Dimensions

---

**LOA:** 68' 1" (20.75mm)

**Beam:** 19.5

**Max Draft:** 6' 5" (1.96mm)

---

## Speed, Capacities and Weight

---

**Cruise Speed:** 8 Knots Kts. (9 MPH)

**Cruise Speed Range:** 2500

**Max Speed:** 9 Knots Kts. (10 MPH)

**Water Capacity:** 1000 Gallons

**Holding Tank:** 200 Gal Gallons

**Fuel Capacity:** 3000 Gal Gallons

---

## Accommodations

---

**Total Cabins:** 4

**Total Heads:** 4

---

## Hull and Deck Information

---

**Hull Material:** Steel

---

## Engine Information

---

**Engines:** 2

**Manufacturer:** Gardner

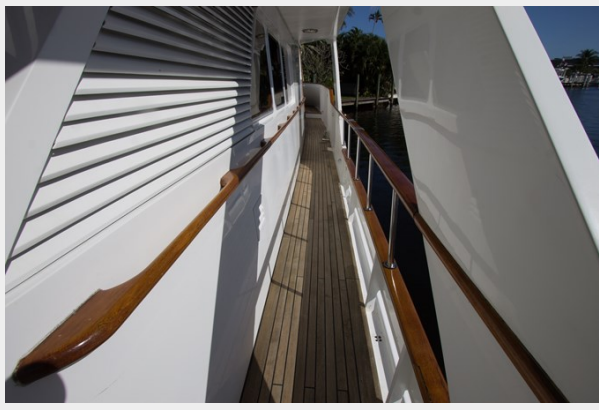
**Engine Type:** Inboard

**Fuel Type:** Diesel

# PHOTOS















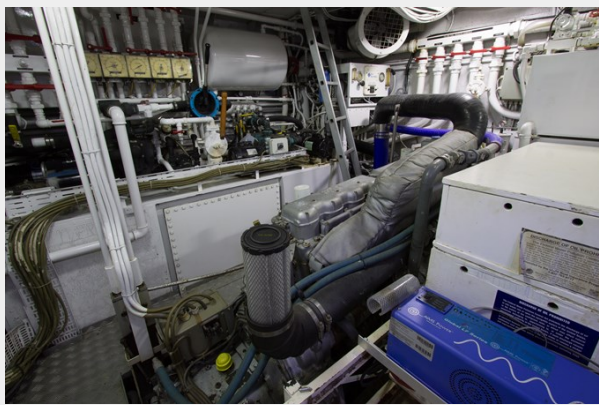


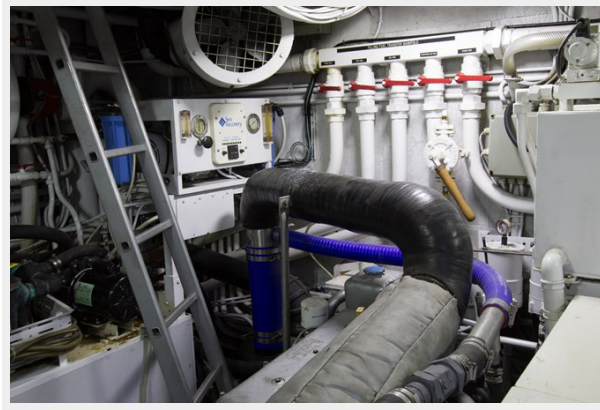












---

# CONTACTS

---

Andrey Shestakov, leading yacht broker of the sales department of Shestakov Yacht Sales Inc. Shestakov Yacht Sales Inc., the official representative of the Miami/Fort Lauderdale FL headquarters.

---

## Contact details

---

Email: [andrey@shestakovyachtsales.com](mailto:andrey@shestakovyachtsales.com)

Web: [shestakovyachtsales.com/en/](http://shestakovyachtsales.com/en/)

---

## Telephones

---

USA: +1(954)274-4435

---

## Office hours

---

Monday – Saturday: **9:00 - 21:00** EDT

Sunday: **closed**

---

## Address

---



Harbour Towne Marina, 850 NE 3rd St,  
STE 213, Dania, FL 33004