

HOLLAND 32 — HOLLAND



Builder: HOLLAND

Year Built: 2024

Model: Motor Yacht

Price: PRICE ON APPLICATION

Location: United States

LOA: 32' 1" (9.78mm)

Beam: 10.5

Max Draft: 3' 3" (0.99mm)

Cruise Speed: 22 Knots Kts. (25 MPH)

Max Speed: 27 Knots Kts. (31 MPH)

Our experienced yacht broker, Andrey Shestakov, will help you choose and buy a yacht that best suits your needs **Holland 32 — HOLLAND** from our catalogue. Presently, at Shestakov Yacht Sales Inc., we have a wide variety of yachts available on our sale's list. We also work in close contact with all the big yacht manufacturers from all over the world.

If you would like to buy a yacht **Holland 32 — HOLLAND** or would like help answering any questions concerning purchasing, selling or chartering a yacht, please call **+1(954)274-4435**

TABLE OF CONTENTS

TABLE OF CONTENTS	2
SPECIFICATIONS	3
Overview	3
Basic Information	3
Dimensions	3
Speed, Capacities and Weight	3
Accommodations	3
Hull and Deck Information	3
Engine Information	4
PHOTOS	5
Morning, Cockpit	5
Morning, Dockside	5
Helm Seat	5
Upper Helm Console	5
Berth and Galley	6
Battery Panel	6
Making Ready to Depart	6
Wiring Detail	6
Lowspeed cruise	7
Coming Up on Plane	7
Underway	7
CONTACTS	8
Contact details	8
Telephones	8
Office hours	8
Address	8

SPECIFICATIONS

Overview

New boat to be built to your specification, many options available, diesel power, finished interior with head and berth.

Basic Information

Category: Motor Yacht

Model Year: 2024

Year Built: 2024

Country: United States

Dimensions

LOA: 32' 1" (9.78mm)

Beam: 10.5

Max Draft: 3' 3" (0.99mm)

Speed, Capacities and Weight

Cruise Speed: 22 Knots Kts. (25 MPH)

Max Speed: 27 Knots Kts. (31 MPH)

Water Capacity: 20 Gallons

Holding Tank: 10 Gal Gallons

Fuel Capacity: 90 Gal Gallons

Accommodations

Total Cabins: 1

Total Berths: 1

Sleeps: 2

Total Heads: 1

Hull and Deck Information

Hull Material: Fiberglass

Hull Designer: Glen Holland/Royal Lowell

Engine Information

Engines: 1

Manufacturer: Yanmar

Engine Type: Inboard

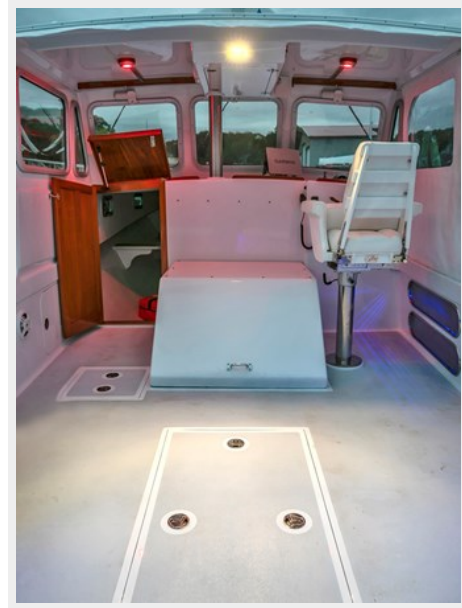
Fuel Type: Diesel

PHOTOS

Morning, Dockside



Morning, Cockpit



Helm Seat



Upper Helm Console



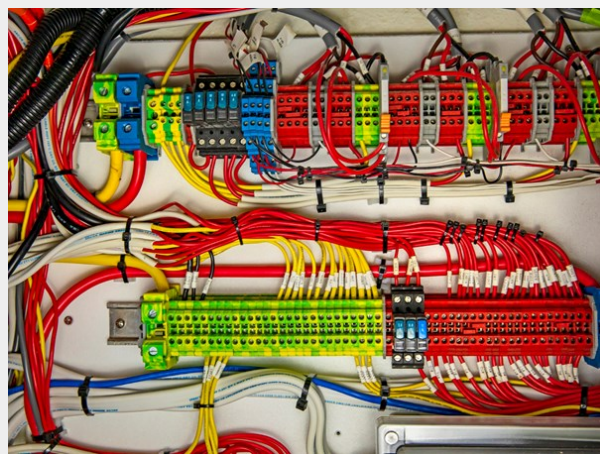
Berth and Galley



Battery Panel



Wiring Detail



Making Ready to Depart



Lowspeed cruise



Coming Up on Plane



Underway



CONTACTS

Andrey Shestakov, leading yacht broker of the sales department of Shestakov Yacht Sales Inc. Shestakov Yacht Sales Inc., the official representative of the Miami/Fort Lauderdale FL headquarters.

Contact details

Email: andrey@shestakovyachtsales.com

Web: shestakovyachtsales.com/en/

Telephones

USA: +1(954)274-4435

Office hours

Monday – Saturday: **9:00 - 21:00** EDT

Sunday: **closed**

Address



Harbour Towne Marina, 850 NE 3rd St,
STE 213, Dania, FL 33004