

FREEDOM — BURGER



Builder: BURGER

Year Built: 1979

Model: Motor Yacht

Price: PRICE ON APPLICATION

Location: United States

LOA: 86' (26.21mm)

Beam: 20

Max Draft: 6' (1.83mm)

Cruise Speed: 13 Knots Kts. (15 MPH)

Max Speed: 17 Knots Kts. (20 MPH)

Our experienced yacht broker, Andrey Shestakov, will help you choose and buy a yacht that best suits your needs **Freedom — BURGER** from **our catalogue**. Presently, at **Shestakov Yacht Sales Inc.**, we have a wide variety of yachts available on **our sale's list**. We also work in close contact with all the big **yacht manufacturers** from all over the world.

If you would like to buy a yacht **Freedom — BURGER** or would like help answering any questions concerning purchasing, selling or chartering a yacht, please call **+1(954)274-4435**

TABLE OF CONTENTS

TABLE OF CONTENTS	2
SPECIFICATIONS	4
Overview	4
Basic Information	4
Dimensions	4
Speed, Capacities and Weight	4
Accommodations	4
Hull and Deck Information	4
Engine Information	5
PHOTOS	6
1 Starboard Side Edited (3)	6
2	6
3 New Wine Coolers	6
4 Salon View from Wet Bar	6
5 Salon Forward	6
6a Wet Bar Area	6
6b On Deck Day Head	7
7 Pilothouse from Starboard	7
8 Pilothouse Helm	7
9 Galley Forward	7
10 Galley Aft	7
11 Galley to Starboard	7
12a Staterooms Hallway Looking Forward	8
12b Master Looking Aft	8
14 Cedar Lined Master Closets	8
13 Master Stateroom to Starboard	8
15 Master Stateroom to Port	9
16 Master Shower Entrance	9

17 Master Head	9
18 VIP Guest From Starboard Entry	9
19 VIP Guest from Port	9
20 Port Guest Stateroom Twin Berth	9
21 Port Guest Head and Shower	10
22 Starboard Guest Stateroom	10
23a Starboard Guest Aft with Entrance to Head	10
23b Starboard Guest Stateroom Head and Shower	10
24b Crew Forward Stateroom	10
24a Captains' Berth and Stateroom	10
24c Crew Lounge and Laundry Area	11
25 Foredeck with Custom Seating and Table	11
26 Flybridge Seating and Tables	11
27 Aft Deck Entry and Seating to Port	11
28 Aft Deck from Port Side	11
29 Engine Room	11
30 Engine Room Looking Forward	12
31 Port Aft Overhead View	12
32	12
33	12
CONTACTS	13
Contact details	13
Telephones	13
Office hours	13
Address	13

SPECIFICATIONS

Overview

1979 Burger 86' Raised Pilothouse

Basic Information

Category: Motor Yacht

Sub Category: Pilothouse

Model Year: 1979

Year Built: 1979

Country: United States

Dimensions

LOA: 86' (26.21mm)

Beam: 20

Max Draft: 6' (1.83mm)

Speed, Capacities and Weight

Cruise Speed: 13 Knots Kts. (15 MPH) **Max Speed:** 17 Knots Kts. (20 MPH)

Water Capacity: 900 Gallons

Fuel Capacity: 5000 Gal Gallons

Accommodations

Total Cabins: 4

Sleeps: 8

Total Heads: 5

Crew Cabin: 4

Hull and Deck Information

Hull Material: Aluminum

Hull Configuration: Semi-Displacement

Engine Information

Engines: 2

Manufacturer: MTU

Engine Type: Inboard

Fuel Type: Diesel

PHOTOS

1 Starboard Side Edited (3)



2



3 New Wine Coolers



4 Salon View from Wet Bar



5 Salon Forward



6a Wet Bar Area



6b On Deck Day Head



7 Pilothouse from Starboard



8 Pilothouse Helm



9 Galley Forward



10 Galley Aft



11 Galley to Starboard



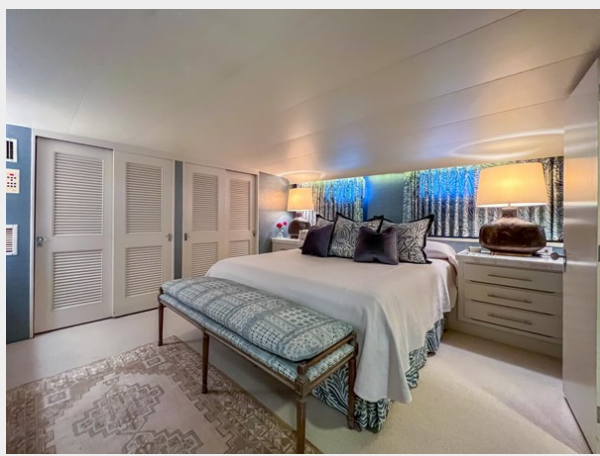
12a Staterooms Hallway Looking Forward



12b Master Looking Aft



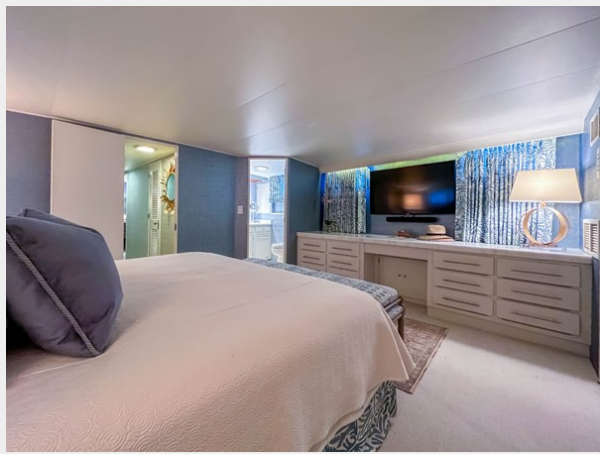
13 Master Stateroom to Starboard



14 Cedar Lined Master Closets



15 Master Stateroom to Port



16 Master Shower Entrance



17 Master Head



18 VIP Guest From Starboard Entry



19 VIP Guest from Port



20 Port Guest Stateroom Twin Berth



21 Port Guest Head and Shower



22 Starboard Guest Stateroom



23a Starboard Guest Aft with Entrance to Head



23b Starboard Guest Stateroom Head and Shower



24a Captains' Berth and Stateroom



24b Crew Forward Stateroom



24c Crew Lounge and Laundry Area



25 Foredeck with Custom Seating and Table



26 Flybridge Seating and Tables



27 Aft Deck Entry and Seating to Port



28 Aft Deck from Port Side



29 Engine Room



30 Engine Room Looking Forward



31 Port Aft Overhead View



32



33



CONTACTS

Andrey Shestakov, leading yacht broker of the sales department of Shestakov Yacht Sales Inc. Shestakov Yacht Sales Inc., the official representative of the Miami/Fort Lauderdale FL headquarters.

Contact details

Email: **andrey@shestakovyachtsales.com**

Web: shestakovyachtsales.com/en/

Telephones

USA: **+1(954)274-4435**

Office hours

Monday – Saturday: **9:00 - 21:00** EDT

Sunday: **closed**

Address



Harbour Towne Marina, 850 NE 3rd St, STE 213, Dania, FL 33004