

M/Y MATARIKI — MAORI



Builder: [MAORI](#)

Year Built: 2014

Model: Motor Yacht

Price: PRICE ON APPLICATION

Location: Greece

LOA: 77' 5" (23.6mm)

Beam: 22.58

Max Draft: 3' 11" (1.19mm)

Cruise Speed: 35 Knots Kts. (40 MPH)

Max Speed: 43 Knots Kts. (49 MPH)

Our experienced yacht broker, Andrey Shestakov, will help you choose and buy a yacht that best suits your needs **M/Y MATARIKI — MAORI** from **our catalogue**. Presently, at **Shestakov Yacht Sales Inc.**, we have a wide variety of yachts available on **our sale's list**. We also work in close contact with all the big **yacht manufacturers** from all over the world.

If you would like to buy a yacht **M/Y MATARIKI — MAORI** or would like help answering any questions concerning purchasing, selling or chartering a yacht, please call **+1(954)274-4435**

TABLE OF CONTENTS

| | |
|------------------------------|----|
| TABLE OF CONTENTS | 2 |
| SPECIFICATIONS | 3 |
| Overview | 3 |
| Basic Information | 3 |
| Dimensions | 3 |
| Speed, Capacities and Weight | 3 |
| Accommodations | 4 |
| Hull and Deck Information | 4 |
| Engine Information | 4 |
| PHOTOS | 5 |
| CONTACTS | 14 |
| Contact details | 14 |
| Telephones | 14 |
| Office hours | 14 |
| Address | 14 |

SPECIFICATIONS

Overview

Built in GRP by Italian yard Maori with naval architecture, exterior design and interior styling by Nauta Design, M/Y MATARIKI was delivered in 2014 with a dual purpose as a very large and luxurious tender or a pocket superyacht. In mint condition, she offers wide open spaces, luxury, comfort and excellent performances.

The superb M/Y MATARIKI underwent a major refit in 2015 consisting of a new configuration of the aft deck, new arrangement of the sunbed and enlargement of the salon with closed bulkhead.

Thanks to the propulsion of two 1800hp Man engines joined with a Jolly Drive surface propellers system, Maori 78' reaches a top speed of 43kn. Also, for a maximum comfort, she is stabilized with 2 gyroscopic seakeepers 9.

Basic Information

Category: Motor Yacht

Model Year: 2019

Year Built: 2014

Country: Greece

Dimensions

LOA: 77' 5" (23.6mm)

Beam: 22.58

Max Draft: 3' 11" (1.19mm)

Speed, Capacities and Weight

Cruise Speed: 35 Knots Kts. (40 MPH) **Max Speed:** 43 Knots Kts. (49 MPH)

Fuel Capacity: 1241.6 Gal Gallons

Accommodations

Total Cabins: 3

Total Heads: 3

Hull and Deck Information

Hull Material: Fiberglass

Engine Information

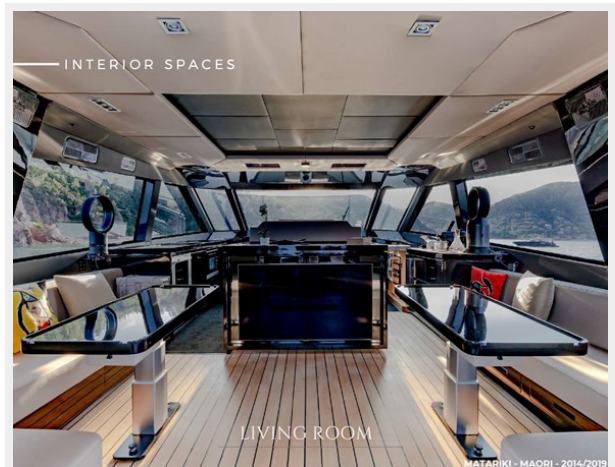
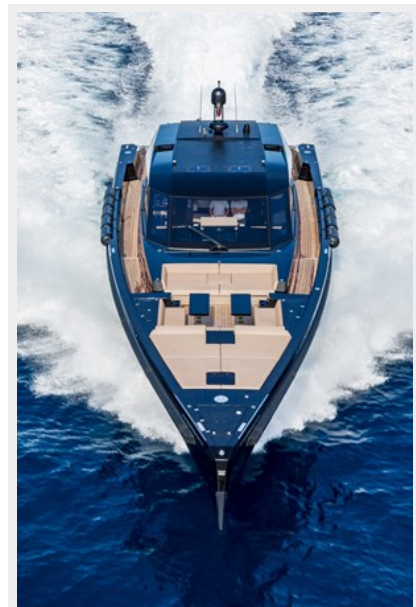
Engines: 2

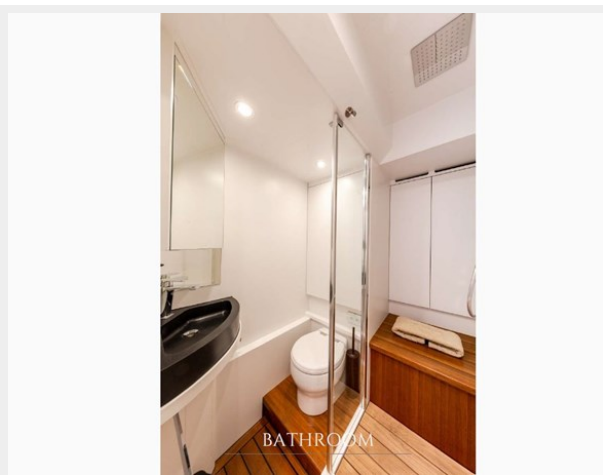
Manufacturer: MAN

Engine Type: Inboard

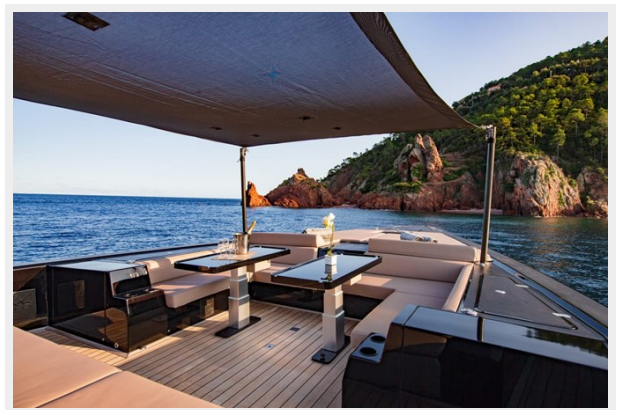
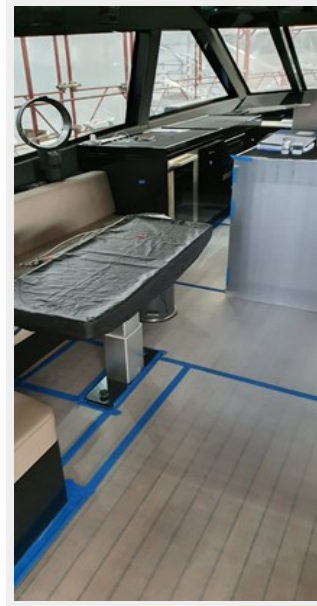
Fuel Type: Diesel

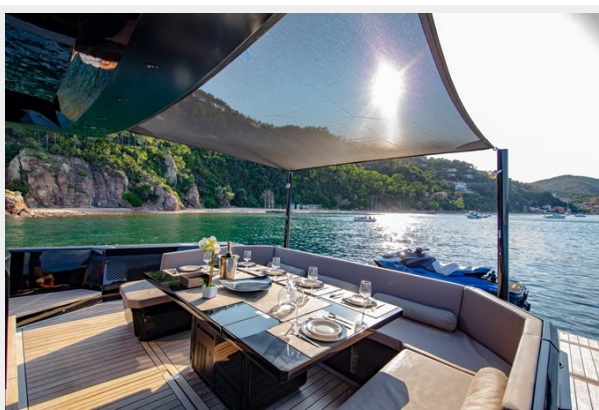
PHOTOS

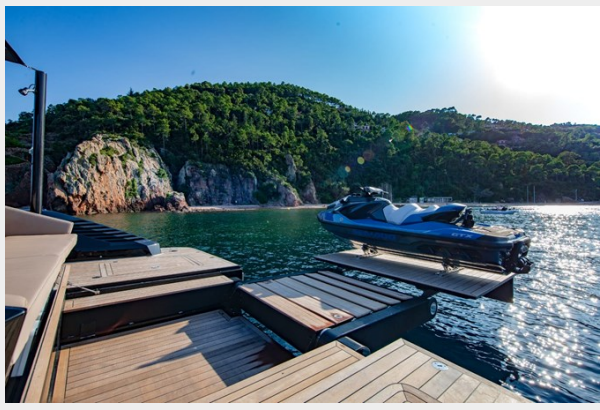




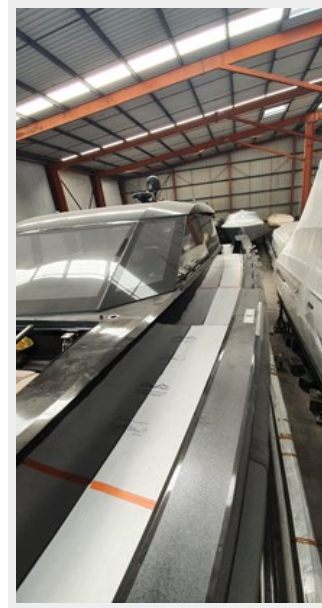














CONTACTS

Andrey Shestakov, leading yacht broker of the sales department of Shestakov Yacht Sales Inc. Shestakov Yacht Sales Inc., the official representative of the Miami/Fort Lauderdale FL headquarters.

Contact details

Email: **andrey@shestakovyachtsales.com**

Web: shestakovyachtsales.com/en/

Telephones

USA: **+1(954)274-4435**

Office hours

Monday – Saturday: **9:00 - 21:00** EDT

Sunday: **closed**

Address



Harbour Towne Marina, 850 NE 3rd St, STE 213, Dania, FL 33004