

PRINCESS 68 — PRINCESS YACHTS



Builder: PRINCESS YACHTS

Year Built: 2017

Model: Motor Yacht

Price: PRICE ON APPLICATION

Location: Finland

LOA: 69' 9" (21.25mm)

Beam: 17.65

Max Draft: 5' 3" (1.58mm)

Max Speed: 32 Knots Kts. (37 MPH)

Our experienced yacht broker, Andrey Shestakov, will help you choose and buy a yacht that best suits your needs **Princess 68 — PRINCESS YACHTS** from **our catalogue**. Presently, at **Shestakov Yacht Sales Inc.**, we have a wide variety of yachts available on **our sale's list**. We also work in close contact with all the big **yacht manufacturers** from all over the world.

If you would like to buy a yacht **Princess 68 — PRINCESS YACHTS** or would like help answering any questions concerning purchasing, selling or chartering a yacht, please call **+1(954)274-4435**

TABLE OF CONTENTS

TABLE OF CONTENTS	2
SPECIFICATIONS	5
Overview	5
Basic Information	5
Dimensions	6
Speed, Capacities and Weight	6
Accommodations	6
Hull and Deck Information	6
Engine Information	6
PHOTOS	7
3	7
2	7
4	7
5	7
7	8
6	8
8	8
9	8
11	8
10	8
12	9
13	9
14	9
15	9
16	9
17	9
19	10
18	10

20	10
21	10
23	10
22	10
1	11
2	11
3	11
4	11
5	12
6	12
7	12
8	12
9	12
10	12
11	13
12	13
13	13
14	13
15	13
16	13
18	14
17	14
19	14
20	14
21	14
22	14
24	15
23	15
25	15

26	15
27	16
28	16
29	16
30	16
31	17
32	17
33	17
34	17
35	17
36	17
37	18
38	18
39	18
CONTACTS	19
Contact details	19
Telephones	19
Office hours	19
Address	19

SPECIFICATIONS

Overview

The Princess 68 Flybridge yacht boasts impressive internal volume for a yacht of her size and class, the perfect entertaining space when out at sea and in the sun.

As you step into the saloon and lounging area, enjoy incredible views and plenty of natural light from the huge full height panoramic windows.

The 68's master stateroom features a private stairwell and lobby, the guest cabins being accessed by a separate stairwell forward. The full beam master cabin includes a full ensuite and dressing area with vast hull-side windows for the most dramatic views and a sofa to watch it all from in complete comfort. The lobby outside the master cabin houses a washer/dryer.

The three other lower cabins consist of two twins which can be joined to become a big double port and starboard side, and a forward VIP which again is very spacious and fully ensuite.

Stepping up to the vast flybridge, there is ample lounging and entertainment space that is all well protected from the sun with a huge hardtop. The flybridge also extends to an exterior sunbathing/lounging area aft. All of these areas are in complete privacy and away from the helm position where the captain is separately located, making the space ideal for social entertainment, charter, or relaxing with guests.

Out at sea, the Princess 68 promises to deliver another classically refined driving experience with a top speed of up to 32 knots and fast efficient cruising above 20 knots. The hull's underwater geometry is designed to make smooth progress over waves, the resin-infused composite build method creating a structure that is lightweight but immensely strong, allowing for greater fuel efficiency without sacrificing speed.

Basic Information

Category: Motor Yacht

Sub Category: Flybridge

Model Year: 2017

Year Built: 2017

Country: Finland

Dimensions

LOA: 69' 9" (21.25mm)

Beam: 17.65

Max Draft: 5' 3" (1.58mm)

Speed, Capacities and Weight

Max Speed: 32 Knots Kts. (37 MPH)

Water Capacity: 909 Gallons

Fuel Capacity: 1083.11 Gal Gallons

Accommodations

Total Cabins: 4

Total Berths: 6

Sleeps: 8

Total Heads: 3

Crew Cabin: 2

Crew Berths: 2

Crew Heads: 1

Hull and Deck Information

Hull Material: Fiberglass

Deck Material: Composite Fiberglass

Engine Information

Engines: 2

Manufacturer: MAN

Engine Type: Inboard

Fuel Type: Diesel

PHOTOS

2



3



4



5



6



7



8



9



10



11



12



13



14



15



16



17



18



19



20



21



22



23



1



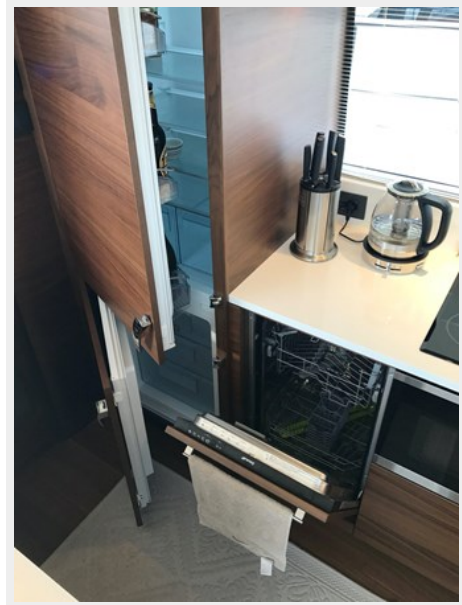
2



3



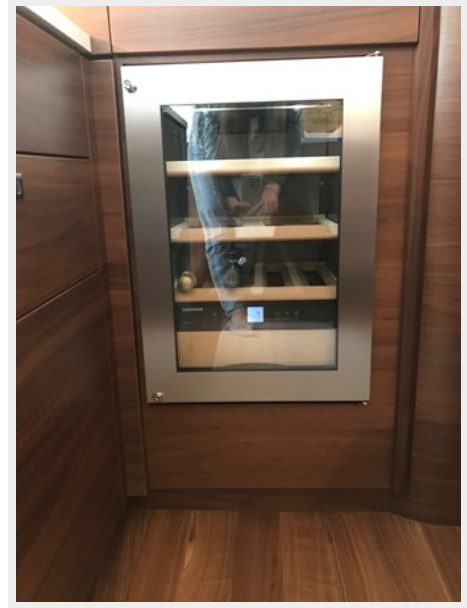
4



5



6



7



8



9



10



11



12



13



14



15



16



17



18



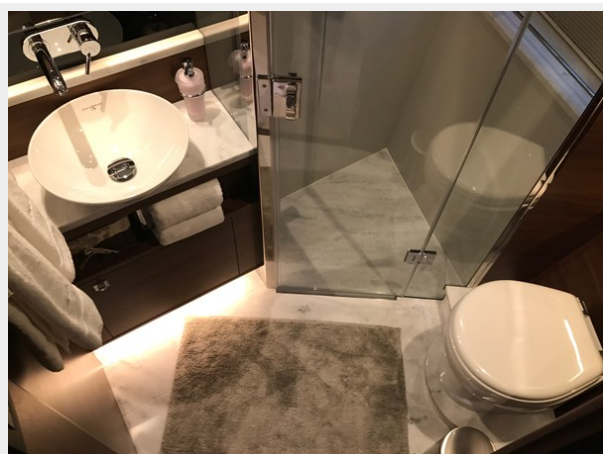
19



20



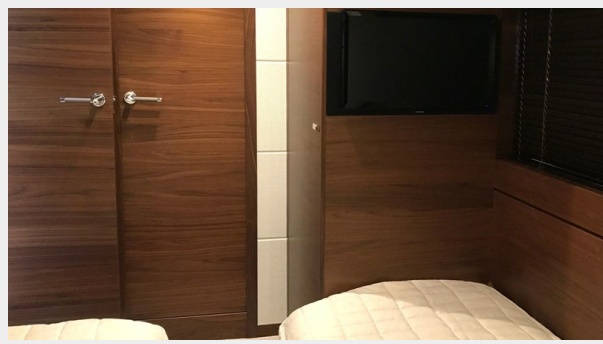
21



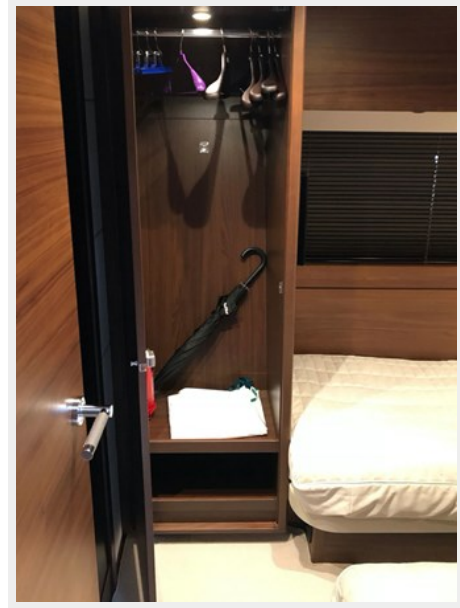
22



23



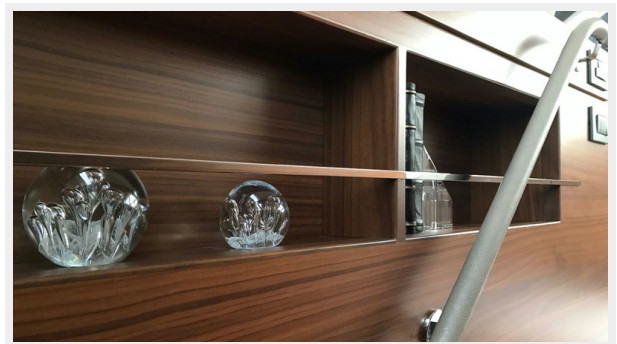
24



25



26



27



28



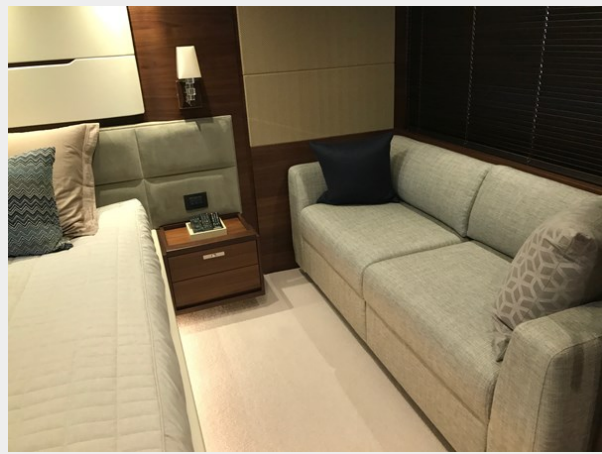
29



30



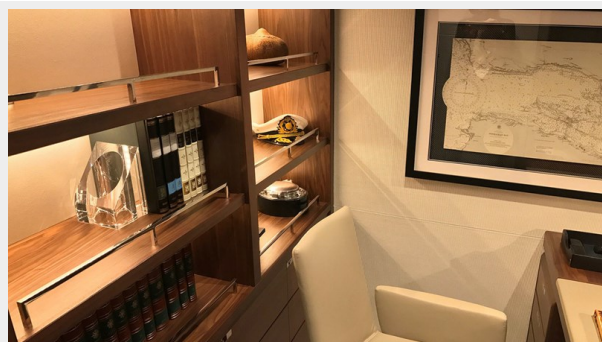
31



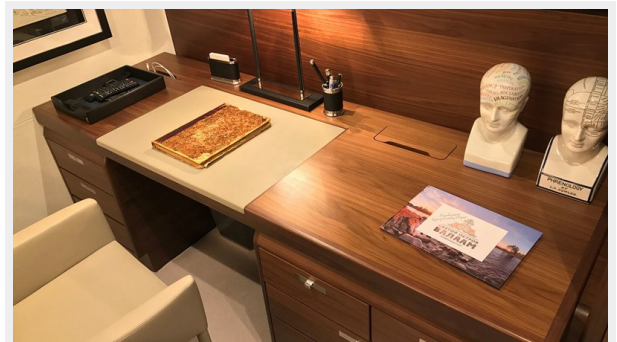
32



33



34



35



36



37



38



39



CONTACTS

Andrey Shestakov, leading yacht broker of the sales department of Shestakov Yacht Sales Inc. Shestakov Yacht Sales Inc., the official representative of the Miami/Fort Lauderdale FL headquarters.

Contact details

Email: **andrey@shestakovyachtsales.com**

Web: shestakovyachtsales.com/en/

Telephones

USA: **+1(954)274-4435**

Office hours

Monday – Saturday: **9:00 - 21:00** EDT

Sunday: **closed**

Address



Harbour Towne Marina, 850 NE 3rd St, STE 213, Dania, FL 33004