

## ANDIE BO — NORDIC TUGS



**Builder:** NORDIC TUGS

**Year Built:** 1989

**Model:** Motor Yacht

**Price:** PRICE ON APPLICATION

**Location:** United States

**LOA:** 32' (9.75mm)

**Beam:** 11

**Max Draft:** 3' 6" (1.07mm)

**Cruise Speed:** 8 Knots Kts. (9 MPH)

**Max Speed:** 14 Knots Kts. (16 MPH)

Our experienced yacht broker, Andrey Shestakov, will help you choose and buy a yacht that best suits your needs **Andie Bo — NORDIC TUGS** from our catalogue. Presently, at Shestakov Yacht Sales Inc., we have a wide variety of yachts available on our sale's list. We also work in close contact with all the big yacht manufacturers from all over the world.

If you would like to buy a yacht **Andie Bo — NORDIC TUGS** or would like help answering any questions concerning purchasing, selling or chartering a yacht, please call **+1(954)274-4435**

---

# TABLE OF CONTENTS

---

|                              |   |
|------------------------------|---|
| TABLE OF CONTENTS            | 2 |
| SPECIFICATIONS               | 5 |
| Overview                     | 5 |
| Basic Information            | 5 |
| Dimensions                   | 5 |
| Speed, Capacities and Weight | 5 |
| Accommodations               | 6 |
| Hull and Deck Information    | 6 |
| Engine Information           | 6 |
| PHOTOS                       | 7 |
| 0_2785187_                   | 7 |
| 2_2785187_                   | 7 |
| 3_2785187_                   | 7 |
| 4_2785187_                   | 7 |
| 5_2785187_                   | 7 |
| 6_2785187_                   | 7 |
| 7_2785187_                   | 8 |
| 8_2785187_                   | 8 |
| 9_2785187_                   | 8 |
| 10_2785187_                  | 8 |
| 11_2785187_                  | 8 |
| 12_2785187_                  | 8 |
| 13_2785187_                  | 9 |
| 14_2785187_                  | 9 |
| 15_2785187_                  | 9 |
| 16_2785187_                  | 9 |
| 17_2785187_                  | 9 |
| 18_2785187_                  | 9 |

---

|                 |    |
|-----------------|----|
| 19_2785187_     | 10 |
| 20_2785187_     | 10 |
| 22_2785187_     | 10 |
| 21_2785187_     | 10 |
| 23_2785187_     | 10 |
| 24_2785187_     | 10 |
| 25_2785187_     | 11 |
| 26_2785187_     | 11 |
| 27_2785187_     | 11 |
| 28_2785187_     | 11 |
| 29_2785187_     | 11 |
| 30_2785187_     | 11 |
| 31_2785187_     | 12 |
| 32_2785187_     | 12 |
| 33_2785187_     | 12 |
| 34_2785187_     | 12 |
| 35_2785187_     | 13 |
| 36_2785187_     | 13 |
| 37_2785187_     | 13 |
| 38_2785187_     | 13 |
| 39_2785187_     | 13 |
| 40_2785187_     | 13 |
| 41_2785187_     | 14 |
| 42_2785187_     | 14 |
| 44_2785187_     | 14 |
| 43_2785187_     | 14 |
| 45_2785187_     | 15 |
| CONTACTS        | 16 |
| Contact details | 16 |

---

---

|              |    |
|--------------|----|
| Telephones   | 16 |
| Office hours | 16 |
| Address      | 16 |

---

# SPECIFICATIONS

---

## Overview

---

Andie Bo is a 32' 1989 Nordic tug that recently completed the great loop and is ready for her next adventure. This fuel efficient vessel is perfect for cruising. Her semi-displacement hull equipped with a full keel allows for a smooth ride with great stability. Andie Bo cruises comfortably at 7-8 knots but can run up to 14+ knots when necessary.

The pilot house boasts 6' 8" headroom and has sliding pilot house doors both port and starboard for easy access in locks, docking or just great airflow. Docking and handling are made easy with an aft stern thruster. You won't find a nicer 1989 Tug with only 3500 hrs on her Cummins diesel engine. The Borg Warner transmission was replaced in 2021 and her engine has been serviced regularly.

There is a roomy salon with settee that converts into a double berth. The galley is a component of the salon. Forward of the pilot house is the master stateroom with separate head & shower..

Andie Bo is competitively priced and won't be around very long. Don't miss out on this one.

## Basic Information

---

**Category:** Motor Yacht

**Model Year:** 1989

**Year Built:** 1989

**Country:** United States

## Dimensions

---

**LOA:** 32' (9.75mm)

**Beam:** 11

**Max Draft:** 3' 6" (1.07mm)

## Speed, Capacities and Weight

---

**Cruise Speed:** 8 Knots Kts. (9 MPH)

**Max Speed:** 14 Knots Kts. (16 MPH)

**Water Capacity:** 100 Gallons

**Holding Tank:** 30 Gal Gallons

**Fuel Capacity:** 200 Gal Gallons

---

## Accommodations

---

**Total Cabins:** 1

**Total Berths:** 1

**Total Heads:** 1

---

## Hull and Deck Information

---

**Hull Material:** Fiberglass

---

## Engine Information

---

**Engines:** 1

**Manufacturer:** Cummins

**Engine Type:** Inboard

**Fuel Type:** Diesel

# PHOTOS

0\_2785187\_



2\_2785187\_



3\_2785187\_



4\_2785187\_



5\_2785187\_



6\_2785187\_



7\_2785187\_



8\_2785187\_



9\_2785187\_



10\_2785187\_



11\_2785187\_



12\_2785187\_





13\_2785187\_



14\_2785187\_



15\_2785187\_



16\_2785187\_



17\_2785187\_



18\_2785187\_



19\_2785187\_



20\_2785187\_



22\_2785187\_

21\_2785187\_



23\_2785187\_



24\_2785187\_



25\_2785187\_



26\_2785187\_



27\_2785187\_



28\_2785187\_



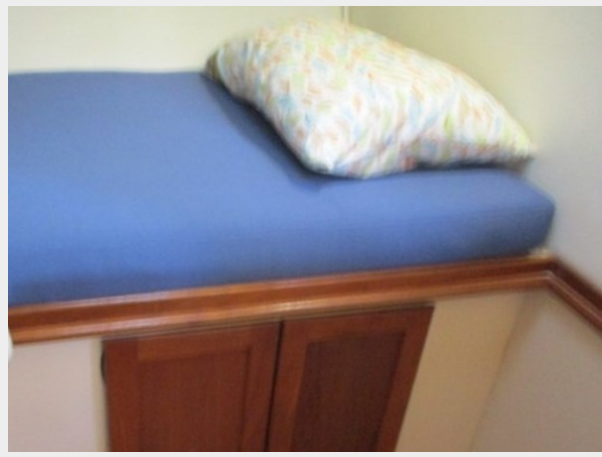
29\_2785187\_



30\_2785187\_



31\_2785187\_



32\_2785187\_



33\_2785187\_



34\_2785187\_



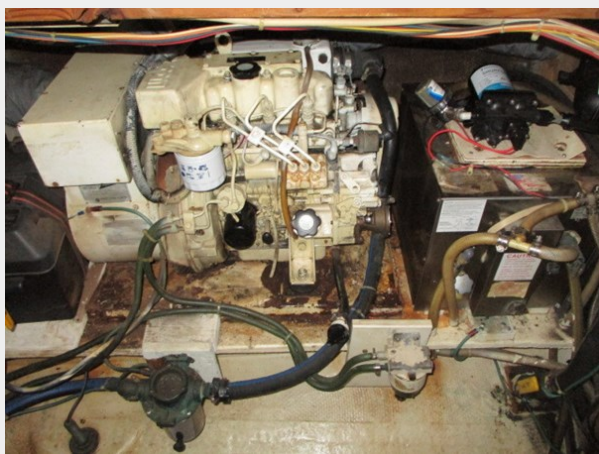
35\_2785187\_



36\_2785187\_



37\_2785187\_



38\_2785187\_



39\_2785187\_



40\_2785187\_



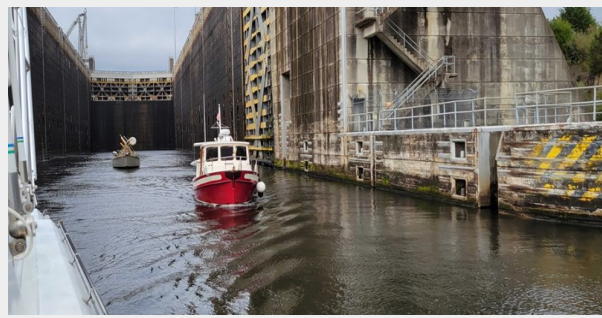
41\_2785187\_



42\_2785187\_



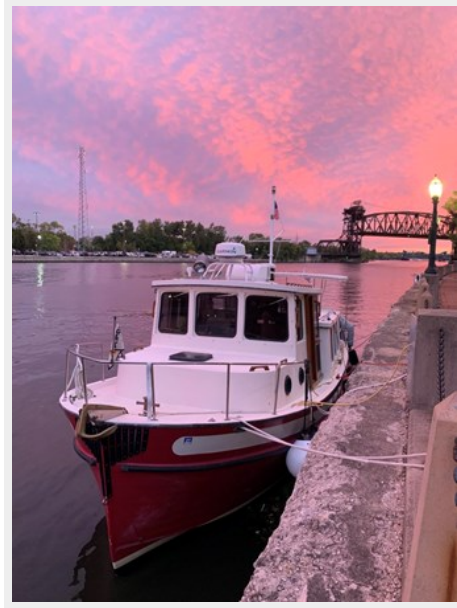
43\_2785187\_



44\_2785187\_



45\_2785187\_



# CONTACTS

---

Andrey Shestakov, leading yacht broker of the sales department of Shestakov Yacht Sales Inc. Shestakov Yacht Sales Inc., the official representative of the Miami/Fort Lauderdale FL headquarters.

## Contact details

---

Email: [andrey@shestakovyachtsales.com](mailto:andrey@shestakovyachtsales.com)

Web: [shestakovyachtsales.com/en/](http://shestakovyachtsales.com/en/)

## Telephones

---

USA: +1(954)274-4435

## Office hours

---

Monday – Saturday: **9:00 - 21:00** EDT

Sunday: **closed**

## Address

---



Harbour Towne Marina, 850 NE 3rd St,  
STE 213, Dania, FL 33004