

KOMOKWA — HORIZON



Builder: HORIZON

Year Built: 2010

Model: Motor Yacht

Price: PRICE ON APPLICATION

Location: Canada

LOA: 135' (41.15m)

Beam: 28

Max Draft: 7' 7" (2.31m)

Cruise Speed: 10.5 Knots Kts. (12 MPH)

Max Speed: 15 Knots Kts. (17 MPH)

Our experienced yacht broker, Andrey Shestakov, will help you choose and buy a yacht that best suits your needs **Komokwa — HORIZON** from our catalogue. Presently, at Shestakov Yacht Sales Inc., we have a wide variety of yachts available on our sale's list. We also work in close contact with all the big yacht manufacturers from all over the world.

If you would like to buy a yacht **Komokwa — HORIZON** or would like help answering any questions concerning purchasing, selling or chartering a yacht, please call **+1(954)274-4435**

TABLE OF CONTENTS

TABLE OF CONTENTS	2
SPECIFICATIONS	3
Overview	3
Basic Information	3
Dimensions	3
Speed, Capacities and Weight	4
Accommodations	4
Hull and Deck Information	4
Engine Information	4
PHOTOS	5
CONTACTS	17
Contact details	17
Telephones	17
Office hours	17
Address	17

SPECIFICATIONS

Overview

KOMOKWA represents the best value on the market today and is the highest optioned Horizon 135 Premier ever built. With an asking price of \$7.9MM USD she is aggressively priced for a fast sale.

She comfortably sleeps 10 guests in 5 cabins with a private owners level on the upper deck + a fully equipped gym with full bath in the lower guest accommodations has 3 pullman berths thus allowing a total of 13 in the owners party.

KOMOKWA is a proven world cruiser having successfully completed 60,000nm circumnavigation with the original owner who purchased the yacht new just over 10 years ago to travel with his family. Zero speed stabilizers and shore power converters allow for comfortable travel & the ability to plug in anywhere in the world without issue. Now having finished his journey she is offered exclusively for sale and in excellent condition.

In 2017 her main engines were replaced due to a defect in the previous models and with just over 3,000 hours they represent low hours and owner just paid for a new 3 year/3,600hr warranty on the engines good until May 21st, 2025.

Just finished a shipyard period at Delta Marine in Seattle, Washington where she completed her annual maintenance and routine services & new bottom job.

Basic Information

Category: Motor Yacht

Sub Category: Tri-Deck

Model Year: 2010

Year Built: 2010

Refit Type: Cosmetic & Mechanical

Country: Canada

Dimensions

LOA: 135' (41.15mm)

LWL: 118' (35.97mm)

Beam: 28

Max Draft: 7' 7" (2.31mm)

Speed, Capacities and Weight

Cruise Speed: 10.5 Knots Kts. (12 MPH)

Cruise Speed Range: 2700

Max Speed: 15 Knots Kts. (17 MPH)

Max Speed Range: 570 Kts.

Gross Tonnage: 427 Pounds

Water Capacity: 2000 Gallons

Fuel Capacity: 11400 Gal Gallons

Accommodations

Total Cabins: 5

Total Berths: 10

Sleeps: 13

Total Heads: 7

Crew Cabin: 8

Crew Berths: 8

Crew Heads: 4

Hull and Deck Information

Hull Material: Fiberglass

Deck Material: Teak over Fiberglass

Hull Configuration: Full Displacement

Hull Designer: Horizon Yachts

Exterior Designer: Greg Marshall

Interior Designer: Claudia Drettman & JC Espinoza

Engine Information

Engines: 2

Manufacturer: MTU

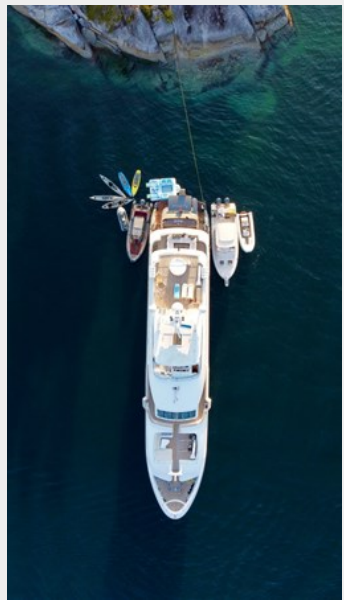
Engine Type: Inboard

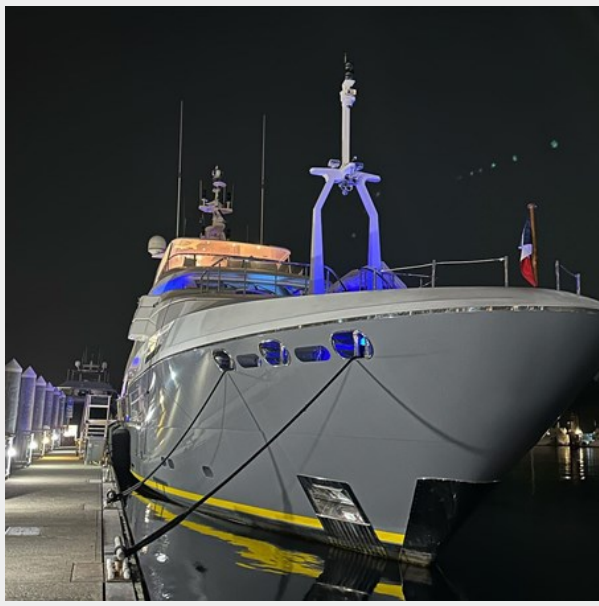
Fuel Type: Diesel

PHOTOS

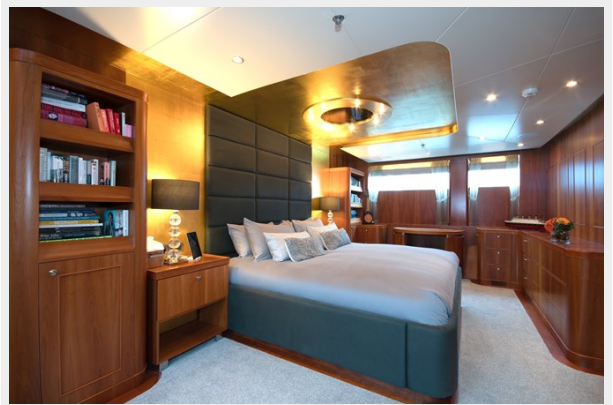




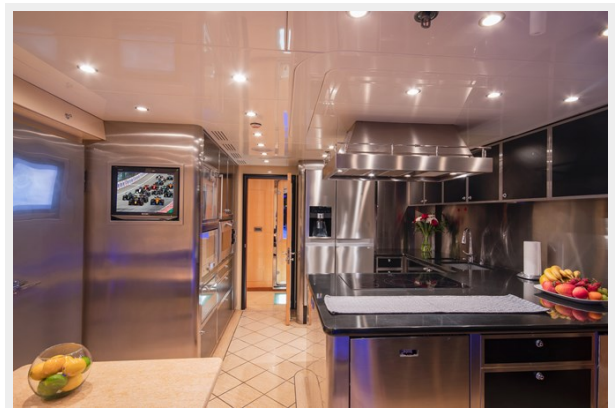






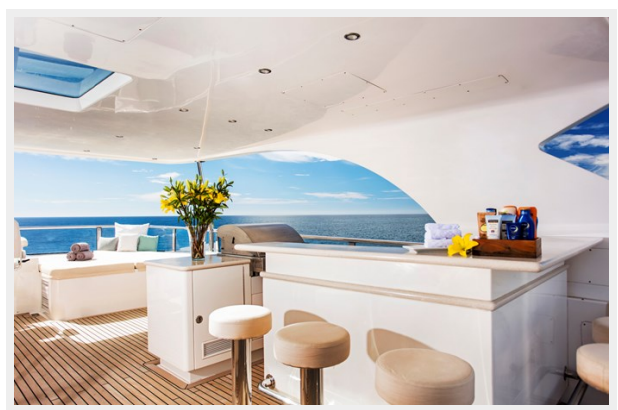


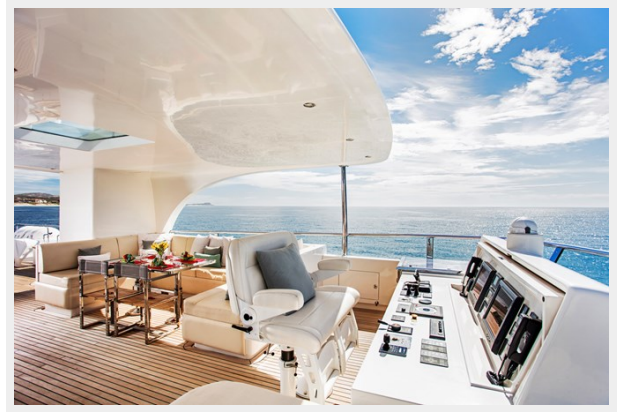












CONTACTS

Andrey Shestakov, leading yacht broker of the sales department of Shestakov Yacht Sales Inc. Shestakov Yacht Sales Inc., the official representative of the Miami/Fort Lauderdale FL headquarters.

Contact details

Email: andrey@shestakovyachtsales.com

Web: shestakovyachtsales.com/en/

Telephones

USA: +1(954)274-4435

Office hours

Monday – Saturday: **9:00 - 21:00** EDT

Sunday: **closed**

Address



Harbour Towne Marina, 850 NE 3rd St,
STE 213, Dania, FL 33004