

UPTICK — GRAND BANKS



Builder: GRAND BANKS

Year Built: 1997

Model: Trawler Yacht

Price: PRICE ON APPLICATION

Location: United States

LOA: 36' (10.97mm)

Beam: 12.66

Min Draft: 4' (1.22mm)

Cruise Speed: 10 Knots Kts. (12 MPH)

Max Speed: 12 Knots Kts. (14 MPH)

Our experienced yacht broker, Andrey Shestakov, will help you choose and buy a yacht that best suits your needs **Uptick — GRAND BANKS** from our catalogue. Presently, at Shestakov Yacht Sales Inc., we have a wide variety of yachts available on our sale's list. We also work in close contact with all the big yacht manufacturers from all over the world.

If you would like to buy a yacht **Uptick — GRAND BANKS** or would like help answering any questions concerning purchasing, selling or chartering a yacht, please call **+1(954)274-4435**

TABLE OF CONTENTS

| | |
|------------------------------|---|
| TABLE OF CONTENTS | 2 |
| SPECIFICATIONS | 4 |
| Overview | 4 |
| Basic Information | 4 |
| Dimensions | 4 |
| Speed, Capacities and Weight | 4 |
| Accommodations | 5 |
| Hull and Deck Information | 5 |
| Engine Information | 5 |
| PHOTOS | 6 |
| 1-Grand Banks 36 MY | 6 |
| 2-underway bow | 6 |
| 3-underway stbd. side | 6 |
| 4-UPTICK Haulout | 6 |
| 5-Master stateroom | 6 |
| 6-Main cabin | 6 |
| 7-main salon and galley | 7 |
| 8-galley | 7 |
| 9-lower helm & panel | 7 |
| 10-Salon | 7 |
| 11-stove | 8 |
| 12-Guest cabin | 8 |
| 13-Head | 8 |
| 14-Shower | 8 |
| 15-engine room 1 | 9 |
| 16-engine room 2 | 9 |
| 18-engine room 4 | 9 |
| 17-engine room 3 | 9 |

| | |
|-----------------|-----------|
| 19-fuel tank | 10 |
| 20-fuel system | 10 |
| 21-upper helm | 10 |
| 22-flybridge | 10 |
| 23-Dinghy | 10 |
| 24-image0 | 10 |
| 25-stern view | 11 |
| CONTACTS | 12 |
| Contact details | 12 |
| Telephones | 12 |
| Office hours | 12 |
| Address | 12 |

SPECIFICATIONS

Overview

This yacht is not only beautiful, but also unique in its design and layout. Built in the fine tradition of Grand Banks craftsmanship, the 36 MY was only produced from 1995-1998. Therefore there are a limited number on the market each year.

With two queen-size cabins and large raised aft deck, the vessel is especially roomy and perfect for cruising as a couple or family group. The twin Cummins 210 diesels make for easy cruising at 10-12 knots.

Uptick is available for private charters. If you would like to "try before you buy," chartering a private yacht is a great option. This yacht is also available for charter placement or for private ownership.

Basic Information

Category: Trawler Yacht

Model Year: 1997

Year Built: 1997

Country: United States

Dimensions

LOA: 36' (10.97mm)

Beam: 12.66

Min Draft: 4' (1.22mm)

Speed, Capacities and Weight

Cruise Speed: 10 Knots Kts. (12 MPH)

Max Speed: 12 Knots Kts. (14 MPH)

Water Capacity: 75 Gallons

Holding Tank: 40 Gal Gallons

Fuel Capacity: 200 Gal Gallons

Accommodations

Total Cabins: 2

Total Berths: 2

Total Heads: 2

Hull and Deck Information

Hull Material: Fiberglass

Engine Information

Engines: 2

Manufacturer: Cummins

Engine Type: Inboard

Fuel Type: Diesel

PHOTOS

1-Grand Banks 36 MY



2-underway bow



3-underway stbd. side



4-UPTICK Haulout



5-Master stateroom



6-Main cabin



7-main salon and galley



8-galley



9-lower helm & panel



10-Salon



11-stove



12-Guest cabin



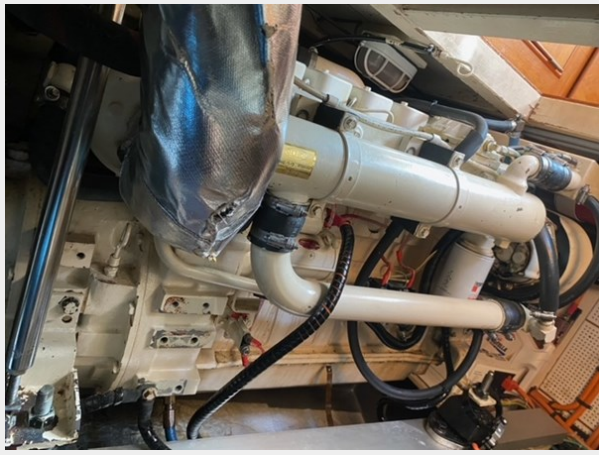
13-Head



14-Shower



15-engine room 1



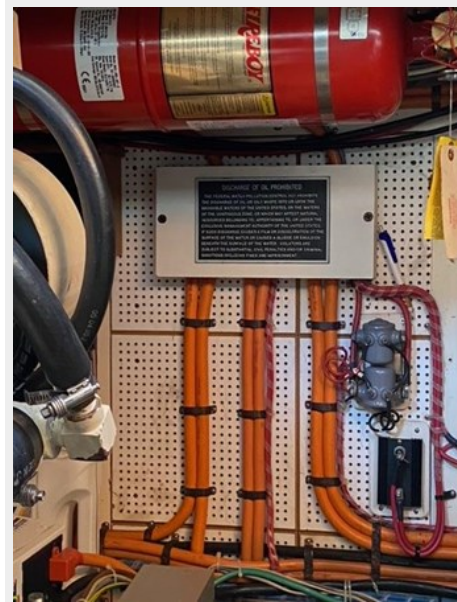
16-engine room 2



17-engine room 3



18-engine room 4



19-fuel tank



20-fuel system



21-upper helm



22-flybridge



23-Dinghy



24-image0



25-stern view



CONTACTS

Andrey Shestakov, leading yacht broker of the sales department of Shestakov Yacht Sales Inc. Shestakov Yacht Sales Inc., the official representative of the Miami/Fort Lauderdale FL headquarters.

Contact details

Email: andrey@shestakovyachtsales.com

Web: shestakovyachtsales.com/en/

Telephones

USA: +1(954)274-4435

Office hours

Monday – Saturday: **9:00 - 21:00** EDT

Sunday: **closed**

Address



Harbour Towne Marina, 850 NE 3rd St,
STE 213, Dania, FL 33004