

## TIARA II — ALLOY



**Builder:** ALLOY

**Year Built:** 2004

**Model:** Other

**Price:** Price on Application

**Location:** United Arab Emirates

**LOA:** 178' (54.25m)

**Beam:** 36.41

**Max Draft:** 17' 1" (5.2m)

**Cruise Speed:** 11 Knots Kts. (13 MPH)

**Max Speed:** 15 Knots Kts. (17 MPH)

Our experienced yacht broker, Andrey Shestakov, will help you choose and buy a yacht that best suits your needs **TIARA II — ALLOY** from our catalogue. Presently, at Shestakov Yacht Sales Inc., we have a wide variety of yachts available on our sale's list. We also work in close contact with all the big yacht manufacturers from all over the world.

If you would like to buy a yacht **TIARA II — ALLOY** or would like help answering any questions concerning purchasing, selling or chartering a yacht, please call **+1(954)274-4435**

# TABLE OF CONTENTS

|   |   |
|---|---|
| TABLE OF CONTENTS                                       | 2 |
| SPECIFICATIONS  | 4 |
| Overview  | 4 |
| Basic Information                                       | 4 |
| Dimensions  | 4 |
| Speed, Capacities and Weight                            | 5 |
| Accommodations  | 5 |
| Hull and Deck Information                               | 5 |
| Engine Information                                      | 5 |
| PHOTOS  | 6 |
| Tiara-image credit Alexis Andrews                       | 6 |
| Tiara-4632 image credit Alexis Andrews                  | 6 |
| Tiara - Tent Outdoor Cinema image credit Alexis Andrews | 6 |
| Tiara-4997 image credit Alexis Andrews                  | 6 |
| Tiara Aft Deck Loungers -image credit Alexis Andrews    | 6 |
| Tiara - Flybridge dining image credit Alexis Andrews    | 6 |
| Tiara - DJ Decks image credit Alexis Andrews            | 7 |
| Tiara - Salon image credit Alexis Andrews               | 7 |
| 2019-12-07_20323041_Photo_by_Jimmy_Hamelin              | 7 |
| Tiara - Dining image credit Alexis Andrews              | 7 |
| 2019-12-07_20213081_Photo_by_Jimmy_Hamelin              | 7 |
| 2019-12-07_19141578_Photo_by_Jimmy_Hamelin              | 7 |
| 2019-12-07_16053011_Photo_by_Jimmy_Hamelin              | 8 |
| 2019-12-07_15571309_Photo_by_Jimmy_Hamelin              | 8 |
| 2019-12-07_15542348_Photo_by_Jimmy_Hamelin 1            | 8 |
| 2019-12-07_15511330_Photo_by_Jimmy_Hamelin 1            | 8 |
| 2019-12-07_15483599_Photo_by_Jimmy_Hamelin 1            | 8 |
| 2019-12-07_15504160_Photo_by_Jimmy_Hamelin              | 8 |

---

|  |    |
|--|----|
| 2019-12-06_13264639_Photo_by_Jimmy_Hamelin | 9  |
| CONTACTS                                   | 10 |
| Contact details                            | 10 |
| Telephones                                 | 10 |
| Office hours                               | 10 |
| Address                                    | 10 |

---

---

# SPECIFICATIONS

---

## Overview

---

Built in aluminium by New Zealand yard to a design by , *Tiara* was delivered in 2004 with a recent six million-euro refit, including brand new teak decks and a mechanical overhaul.

A classic interior by John Munford features flamed mahogany, elegant marquetry and vintage Art-Deco touches, and can accommodate up to 10 guests across five cabins. An impressive split-level master suite benefits from a private lounge and study area, a large marble bathroom and a full-beam cabin with a queen-sized bed.

Two double guest staterooms aft can easily convert into a full-beam VIP suite and a further two cabins can serve as either doubles or twins, and each has an additional Pullman berth. All guest cabins have entertainment centres, television screens and full en suite bathroom facilities, while a further six cabins sleep up to 10 crew members aboard this

*Tiara* is a fast, powerful yacht with a formidable mast of 62.5 metres, the maximum height capable of passing through the Panama Canal. On the aft deck, cocktail tables convert to a full dining table seating 12 and this area can also be an open air dance floor with DJ facilities. Alternatively, a Bedouin tent can be set up offering welcome shade when cruising warmer climes or creating the perfect setting for a movie al fresco. A unique feature for a sailing yacht is the fact that the aft deck is also able to land the owner's eight-seater executive helicopter.

Under power, a 1,400hp Caterpillar diesel engine allows a maximum speed of 15 knots and a range of 5,900 nautical miles at 11 knots.

---

## Basic Information

---

**Category:** Other

**Model Year:** 2004

**Year Built:** 2004

**Country:** United Arab Emirates

---

## Dimensions

---

**LOA:** 178' (54.25mm)

**Beam:** 36.41

**Max Draft:** 17' 1" (5.2mm)

---

## Speed, Capacities and Weight

---

**Cruise Speed:** 11 Knots Kts. (13 MPH)

**Max Speed:** 15 Knots Kts. (17 MPH)

**Gross Tonnage:** 428 Pounds

**Water Capacity:** 10000 Gallons

**Fuel Capacity:** 10144.21 Gal Gallons

---

## Accommodations

---

**Total Cabins:** 5

**Sleeps:** 12

**Crew Cabin:** 10

---

## Hull and Deck Information

---

**Hull Material:** Aluminum

**Deck Material:** Teak

**Hull Configuration:** Monohull

**Hull Color:** Dark Blue

**Hull Designer:** ALLOY / DUBOIS

**Exterior Designer:** Dubois Naval Architects

**Interior Designer:** John Munford Design

---

## Engine Information

---

**Engines:** 1

**Manufacturer:** Caterpillar

# PHOTOS

**Tiara-image credit Alexis Andrews**



**Tiara-4632 image credit Alexis Andrews**



**Tiara - Tent Outdoor Cinema image credit Alexis Andrews**



**Tiara-4997 image credit Alexis Andrews**



**Tiara - Flybridge dining image credit Alexis Andrews**



**Tiara Aft Deck Loungers -image credit Alexis Andrews**



Tiara - Salon image credit Alexis Andrews



Tiara - DJ Decks image credit Alexis Andrews



2019-12-

Tiara - Dining image credit Alexis Andrews

07\_20323041\_Photo\_by\_Jimmy\_Hamelin



2019-12-

07\_20213081\_Photo\_by\_Jimmy\_Hamelin

2019-12-

07\_19141578\_Photo\_by\_Jimmy\_Hamelin



2019-12-  
07\_16053011\_Photo\_by\_Jimmy\_Hamelin



2019-12-  
07\_15571309\_Photo\_by\_Jimmy\_Hamelin



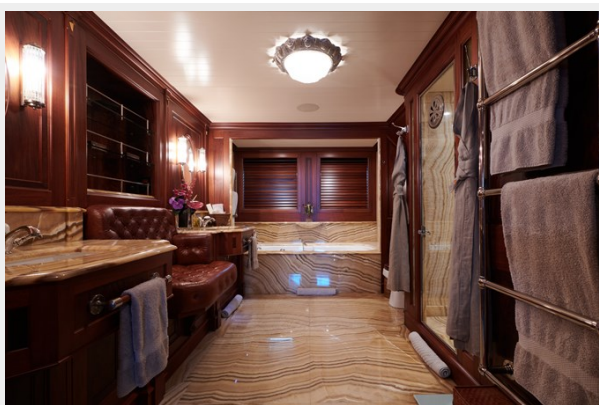
2019-12-  
07\_15542348\_Photo\_by\_Jimmy\_Hamelin 1



2019-12-  
07\_15511330\_Photo\_by\_Jimmy\_Hamelin 1



2019-12-  
07\_15483599\_Photo\_by\_Jimmy\_Hamelin 1



2019-12-  
07\_15504160\_Photo\_by\_Jimmy\_Hamelin





2019-12-06\_13264639\_Photo\_by\_Jimmy\_Hamelin



# CONTACTS

---

Andrey Shestakov, leading yacht broker of the sales department of Shestakov Yacht Sales Inc. Shestakov Yacht Sales Inc., the official representative of the Miami/Fort Lauderdale FL headquarters.

## Contact details

---

Email: [andrey@shestakovyachtsales.com](mailto:andrey@shestakovyachtsales.com)

Web: [shestakovyachtsales.com/en/](http://shestakovyachtsales.com/en/)

## Telephones

---

USA: +1(954)274-4435

## Office hours

---

Monday – Saturday: **9:00 - 21:00** EDT

Sunday: **closed**

## Address

---



Harbour Towne Marina, 850 NE 3rd St,  
STE 213, Dania, FL 33004