

NIRVANA — HORIZON



Builder: HORIZON

Year Built: 2000

Model: Motor Yacht

Price: PRICE ON APPLICATION

Location: United States

LOA: 109' 10" (33.48mm)

Beam: 23.25

Max Draft: 7' (2.13mm)

Cruise Speed: 12 Knots Kts. (14 MPH)

Max Speed: 17 Knots Kts. (20 MPH)

Our experienced yacht broker, Andrey Shestakov, will help you choose and buy a yacht that best suits your needs **Nirvana — HORIZON** from **our catalogue**. Presently, at **Shestakov Yacht Sales Inc.**, we have a wide variety of yachts available on **our sale's list**. We also work in close contact with all the big **yacht manufacturers** from all over the world.

If you would like to buy a yacht **Nirvana — HORIZON** or would like help answering any questions concerning purchasing, selling or chartering a yacht, please call **+1(954)274-4435**

TABLE OF CONTENTS

TABLE OF CONTENTS	2
SPECIFICATIONS	3
Overview	3
Basic Information	3
Dimensions	4
Speed, Capacities and Weight	4
Accommodations	4
Hull and Deck Information	4
Engine Information	4
PHOTOS	5
CONTACTS	16
Contact details	16
Telephones	16
Office hours	16
Address	16

SPECIFICATIONS

Overview

To schedule a private FaceTime or video tour, contact me and make arrangements.

"NIRVANA" is a must-see for anyone shopping in this size & price range that wants a DEAL. Her sellers are highly motivated and ready to strike a deal with the first serious and reasonable buyer. "NIRVANA's" interior décor has a light high gloss wood finish with teak floors nicely joining the interior & exterior deck spaces and giving her layout a nice flow as you transition from outside in. The soft furnishings are a combination of white & gray fabrics and she saw a refit to her decor in 2015

Notable Features and Upgrades:

- New Garmin electronics package complete with open array radar
- Fold-down Beach Club complete with teak beach
- Huge on-deck master cabin located forward on the main deck
- Outdoor day head-on aft deck
- Possibly the most exterior space in her class
- Massive master head complete with private sauna.
- Expansive upper sundeck with alfresco dining and free standing furniture.
- Jacuzzi.
- Enormous tender garage capable of housing multiple toys including tender, jet skis.
- 5,000 gallons fuel tank capacity
- Range in excess of 2,000 nautical miles when cruising at her economical speeds
- Capable of reaching 20 knots at top speed.
- (4) Stateroom (5) head layout plus crew
- Rebuilt Detroit Diesel DDEC 24V-71TA 1800 HP diesel engines (1950 since overhaul)
- Helicopter capable upper aft-deck

Basic Information

Category: Motor Yacht

Model Year: 2000

Year Built: 2000

Country: United States

Dimensions

LOA: 109' 10" (33.48mm)

Beam: 23.25

Max Draft: 7' (2.13mm)

Speed, Capacities and Weight

Cruise Speed: 12 Knots Kts. (14 MPH) **Max Speed:** 17 Knots Kts. (20 MPH)

Water Capacity: 1000 Gallons

Fuel Capacity: 5000 Gal Gallons

Accommodations

Total Cabins: 4

Total Heads: 5

Hull and Deck Information

Hull Material: Fiberglass

Engine Information

Engines: 2

Manufacturer: Detroit Diesel

Engine Type: Inboard

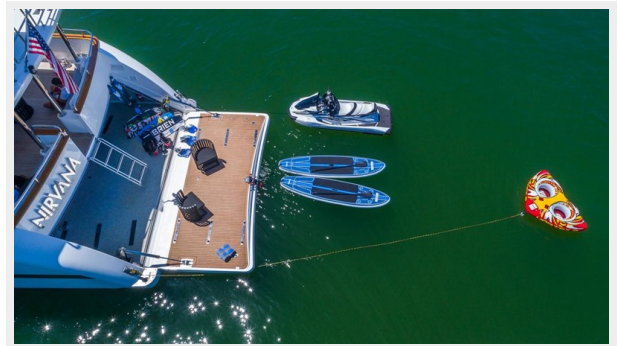
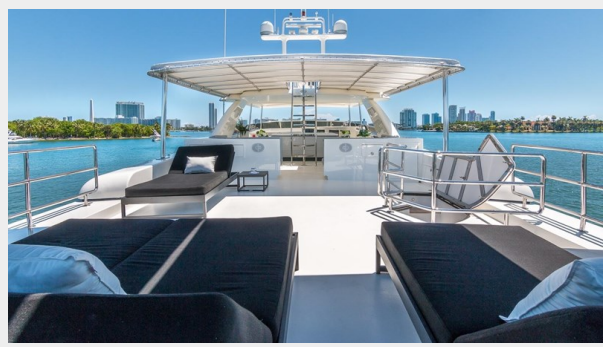
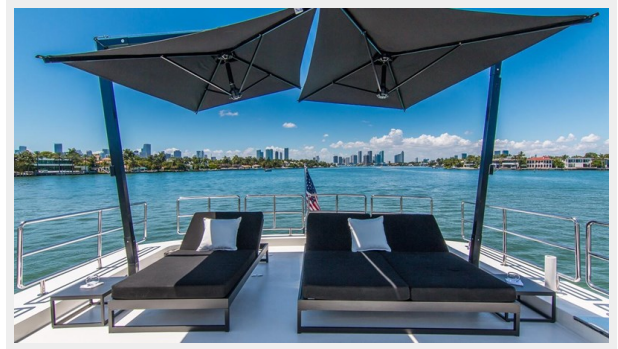
Fuel Type: Diesel

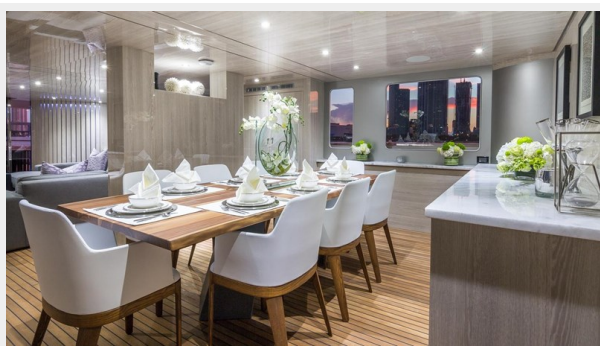
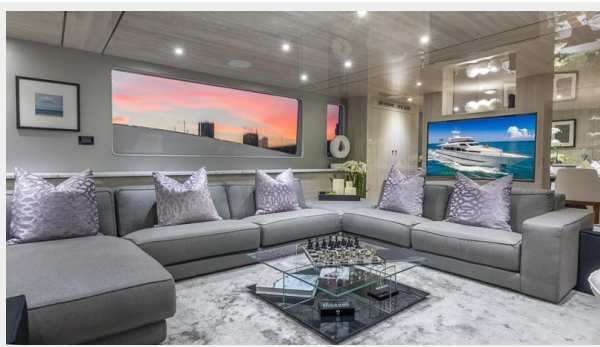
PHOTOS

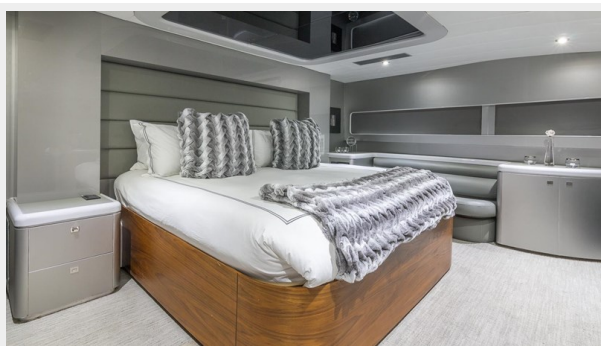
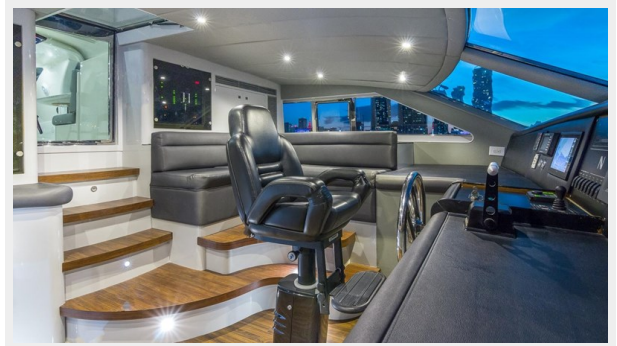




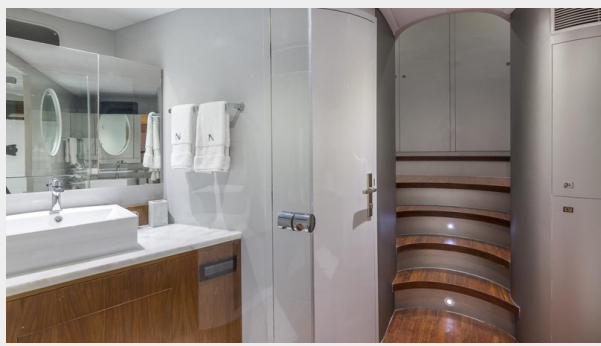






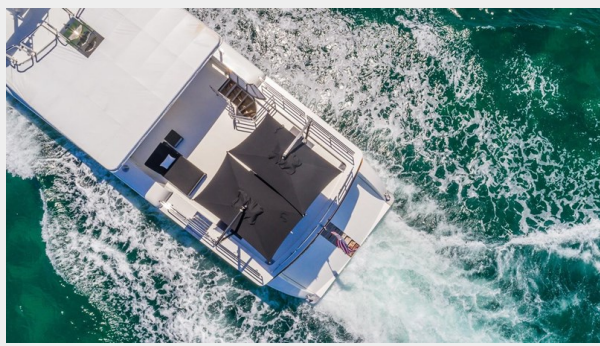












CONTACTS

Andrey Shestakov, leading yacht broker of the sales department of Shestakov Yacht Sales Inc. Shestakov Yacht Sales Inc., the official representative of the Miami/Fort Lauderdale FL headquarters.

Contact details

Email: **andrey@shestakovyachtsales.com**

Web: shestakovyachtsales.com/en/

Telephones

USA: **+1(954)274-4435**

Office hours

Monday – Saturday: **9:00 - 21:00** EDT

Sunday: **closed**

Address



Harbour Towne Marina, 850 NE 3rd St, STE 213, Dania, FL 33004