

QUEEN MARE — CUSTOM



Builder: CUSTOM

Year Built: 2012

Model: Motor Yacht

Price: €24,500,000 EUR

Location: Greece

LOA: 190' (57.91mm)

Beam: 32.83

Max Draft: 8' 10" (2.69mm)

Cruise Speed: 12 Knots Kts. (14 MPH)

Max Speed: 19 Knots Kts. (22 MPH)

Our experienced yacht broker, Andrey Shestakov, will help you choose and buy a yacht that best suits your needs **QUEEN MARE — CUSTOM** from our catalogue. Presently, at Shestakov Yacht Sales Inc., we have a wide variety of yachts available on our sale's list. We also work in close contact with all the big yacht manufacturers from all over the world.

If you would like to buy a yacht **QUEEN MARE — CUSTOM** or would like help answering any questions concerning purchasing, selling or chartering a yacht, please call **+1(954)274-4435**

TABLE OF CONTENTS

TABLE OF CONTENTS	2
SPECIFICATIONS	3
Overview	3
Basic Information	3
Dimensions	3
Speed, Capacities and Weight	3
Accommodations	4
Hull and Deck Information	4
Engine Information	4
PHOTOS	5
CONTACTS	11
Contact details	11
Telephones	11
Office hours	11
Address	11

SPECIFICATIONS

Overview

Queen Mare features accommodations for up to 14 in 7 staterooms including a spacious full-width master suite on the main deck. The spacious sundeck is well laid out with several areas to relax including a large Jacuzzi/pool forward and a covered bar and dining area. There are further outdoor areas to relax and dine on the upper deck, the aft deck, and the foredeck. Queen Mare also has a large stern garage that houses the yacht's tenders and toys. Doors to the garage open on both port and starboard sides. She has a lovely swim platform aft, with hydraulic easy access steps to the water and freshwater shower, as well as an original Swedish sauna and shower on the accommodation deck level. Her luxurious interior décor by Peker Design Ltd. features numerous accent pieces from Ralph Lauren and Fendi, American walnut joinery details, leather tiles, glass, and natural stone.

Basic Information

Category: Motor Yacht

Model Year: 2012

Year Built: 2012

Country: Greece

Dimensions

LOA: 190' (57.91mm)

Beam: 32.83

Max Draft: 8' 10" (2.69mm)

Speed, Capacities and Weight

Cruise Speed: 12 Knots Kts. (14 MPH)

Max Speed: 19 Knots Kts. (22 MPH)

Gross Tonnage: 771 Pounds

Water Capacity: 7598 Gallons

Fuel Capacity: 40947 Gal Gallons

Accommodations

Total Cabins: 7

Sleeps: 14

Total Heads: 6

Crew Cabin: 14

Hull and Deck Information

Hull Material: Steel

Deck Material: Teak

Exterior Designer: Alfa Marine Design

Interior Designer: Peker Design Ltd

Engine Information

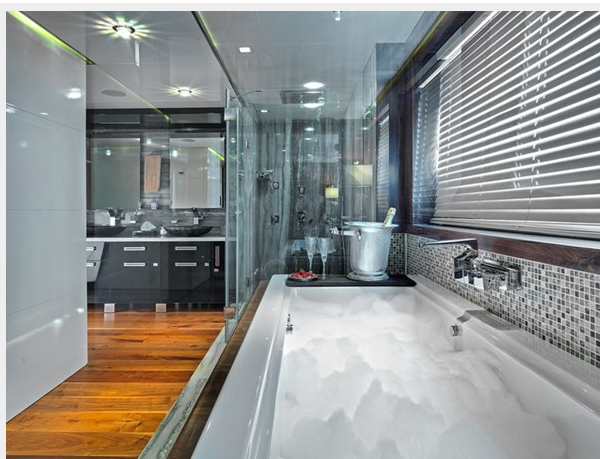
Engines: 2

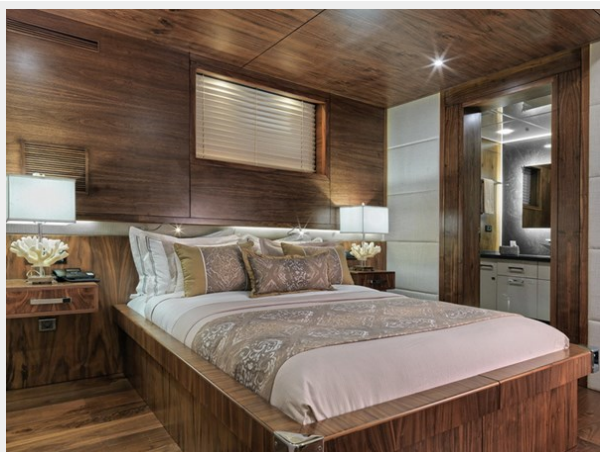
Manufacturer: MITSUBISHI

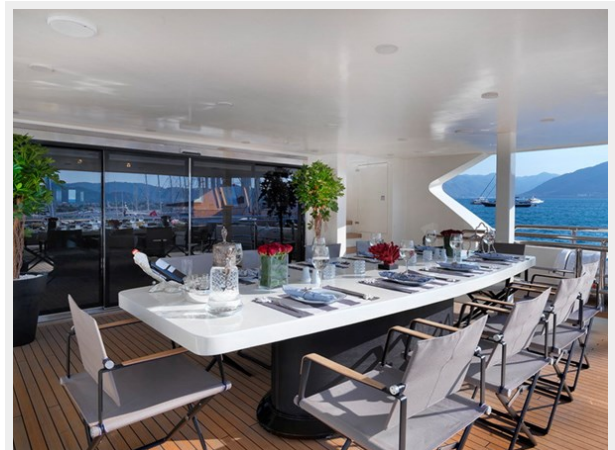
Engine Type: Inboard

PHOTOS













CONTACTS

Andrey Shestakov, leading yacht broker of the sales department of Shestakov Yacht Sales Inc. Shestakov Yacht Sales Inc., the official representative of the Miami/Fort Lauderdale FL headquarters.

Contact details

Email: andrey@shestakovyachtsales.com

Web: shestakovyachtsales.com/en/

Telephones

USA: +1(954)274-4435

Office hours

Monday – Saturday: **9:00 - 21:00** EDT

Sunday: **closed**

Address



Harbour Towne Marina, 850 NE 3rd St,
STE 213, Dania, FL 33004