

ANDYKER — INACE



Builder: INACE

Year Built: 2000

Model: Motor Yacht

Price: PRICE ON APPLICATION

Location: Mexico

LOA: 85' 4" (26.01mm)

Beam: 22.5

Max Draft: 4' 11" (1.5mm)

Cruise Speed: 22 Knots Kts. (25 MPH)

Max Speed: 25 Knots Kts. (29 MPH)

Our experienced yacht broker, Andrey Shestakov, will help you choose and buy a yacht that best suits your needs **Andyker — INACE** from our catalogue. Presently, at Shestakov Yacht Sales Inc., we have a wide variety of yachts available on our sale's list. We also work in close contact with all the big yacht manufacturers from all over the world.

If you would like to buy a yacht **Andyker — INACE** or would like help answering any questions concerning purchasing, selling or chartering a yacht, please call **+1(954)274-4435**

TABLE OF CONTENTS

TABLE OF CONTENTS	2
SPECIFICATIONS	4
Basic Information	4
Dimensions	4
Speed, Capacities and Weight	4
Accommodations	4
Hull and Deck Information	5
Engine Information	5
PHOTOS	6
Main salon 5	6
Main salon aft 1	6
Main salon bar	6
Main salon forward 1	6
Main salon 3	6
Main salon aft 1	6
Main salon forward dining	7
Master stateoom 2	7
Master stateroom aft	7
Master head	7
Guest stateroom VIP	7
Guest stateroom VIP head	7
Guest stateroom stb head	8
Guest stateroom stb	8
Port guest stateroom	8
Port guest stateroom head	8
Galley 2	8
Galley 1	8
Galley 4	9

Helm 1	9
Helm 2	9
Helm 4	9
flybridge helm	9
Flybridge bar	9
Flybridge looking forward	10
Hot tub	10
Flybridge seating	10
Flybridge boatdeck	10
Profile stern	10
Profile top view	10
CONTACTS	11
Contact details	11
Telephones	11
Office hours	11
Address	11

SPECIFICATIONS

Basic Information

Category: Motor Yacht

Model Year: 2000

Year Built: 2000

Country: Mexico

Dimensions

LOA: 85' 4" (26.01mm)

LOD: 85' (25.91mm)

Beam: 22.5

Max Draft: 4' 11" (1.5mm)

Speed, Capacities and Weight

Cruise Speed: 22 Knots Kts. (25 MPH)

Max Speed: 25 Knots Kts. (29 MPH)

Gross Tonnage: 124 Pounds

Water Capacity: 400 Gallons

Fuel Capacity: 4000 Gal Gallons

Accommodations

Total Cabins: 4

Total Berths: 5

Sleeps: 8

Total Heads: 7

Crew Cabin: 2

Crew Berths: 2

Crew Heads: 1

Hull and Deck Information

Hull Material: Aluminum

Deck Material: Aluminum

Hull Configuration: Deep Vee

Hull Color: Blue

Hull Designer: Gregory C Marshall

Exterior Designer: Gregory C Marshall

Interior Designer: Gregory C Marshall

Engine Information

Engines: 2

Manufacturer: Caterpillar

Engine Type: Inboard

Fuel Type: Diesel

PHOTOS

Main salon 5



Main salon aft 1



Main salon bar



Main salon forward 1



Main salon 3



Main salon aft 1



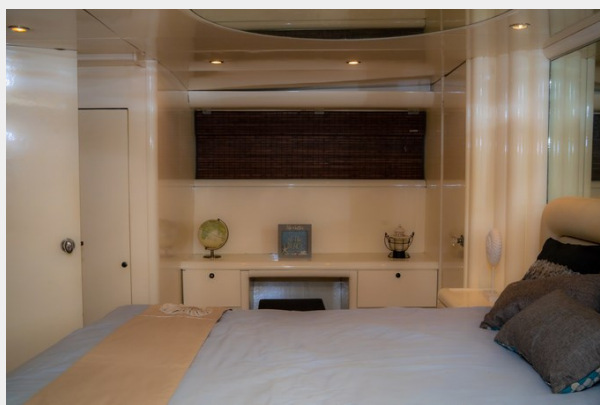
Main salon forward dining



Master stateoom 2



Master stateroom aft



Master head



Guest stateroom VIP



Guest stateroom VIP head



Guest stateroom stb



Guest stateroom stb head



Port guest stateroom



Port guest stateroom head



Galley 2



Galley 1



Galley 4



Helm 1



Helm 2



Helm 4



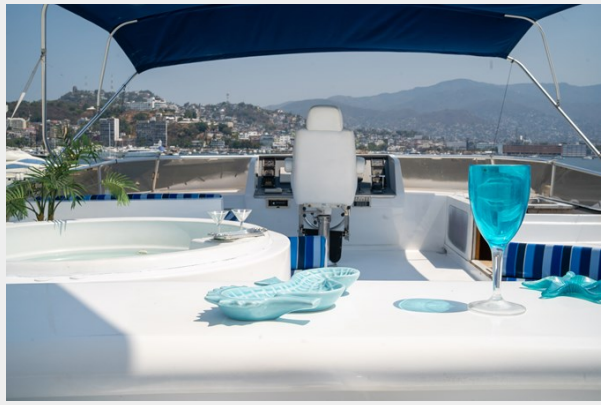
flybridge helm



Flybridge bar



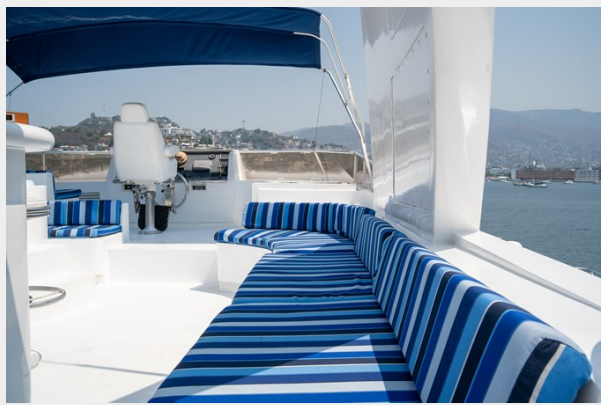
Flybridge looking forward



Hot tub



Flybridge seating



Flybridge boatdeck



Profile stern



Profile top view



CONTACTS

Andrey Shestakov, leading yacht broker of the sales department of Shestakov Yacht Sales Inc. Shestakov Yacht Sales Inc., the official representative of the Miami/Fort Lauderdale FL headquarters.

Contact details

Email: andrey@shestakovyachtsales.com

Web: shestakovyachtsales.com/en/

Telephones

USA: +1(954)274-4435

Office hours

Monday – Saturday: **9:00 - 21:00** EDT

Sunday: **closed**

Address



Harbour Towne Marina, 850 NE 3rd St,
STE 213, Dania, FL 33004