

## BIG OIL — VIKING



**Builder:** VIKING

**Year Built:** 2019

**Model:** Sport Fisherman

**Price:** PRICE ON APPLICATION

**Location:** United States

**LOA:** 62' (18.9mm)

**Beam:** 18.91

**Min Draft:** 5' 2" (1.57mm)

**Cruise Speed:** 32 Knots Kts. (37 MPH)

**Max Speed:** 43 Knots Kts. (49 MPH)

Our experienced yacht broker, Andrey Shestakov, will help you choose and buy a yacht that best suits your needs **Big Oil — VIKING** from our catalogue. Presently, at Shestakov Yacht Sales Inc., we have a wide variety of yachts available on our sale's list. We also work in close contact with all the big yacht manufacturers from all over the world.

If you would like to buy a yacht **Big Oil — VIKING** or would like help answering any questions concerning purchasing, selling or chartering a yacht, please call **+1(954)274-4435**

# TABLE OF CONTENTS

TABLE OF CONTENTS	2
SPECIFICATIONS	5
Overview	5
Basic Information	5
Dimensions	5
Speed, Capacities and Weight	5
Accommodations	5
Hull and Deck Information	6
Engine Information	6
PHOTOS	7
Starboard Running Profile	7
Port Running Profile	7
Main Salon to Port	7
Salon Settee to Port Aft	7
Salon Settee and Dinette	7
Main Salon Looking Aft	7
Main Salon	8
Salon Starboard Side Galley View	8
Two Bar Stools and Galley	8
Salon and Flat Screen TV	8
Galley to Starboard	8
Master Stateroom	8
Walkaround Queen Bed with Upholstered Headboard	9
Master Stateroom View to Flat Screen TV	9
Beautiful Maple Finish Cabinetry	9
One-Piece Custom Frameless Shower Door	9
Washer and Dryer and VIP Stateroom	9
VIP En-Suite Head	9

Guest Twin Bunk Berths	10
VIP Shower	10
Guest Flat Screen TV	10
Guest Head and Shower	10
Flybridge Port Forward Wet Bar	10
Flybridge Forward Seating	10
Bait Freezer	11
Drink Cooler	11
Helm Station	11
Helm Station	11
Helm Station with Overhead Electronics	11
Raised Dash for Electronics	11
Raised Dash for Electronics	12
Raised Dash for Electronics	12
24 Volt Teaser Reels	12
Release Marine Trillion Series Helm Chairs with Ultraleather	12
Palm Beach Towers Helm Station	12
Tower Helm Electronics	12
Flybridge View to the Cockpit	13
Tower View to the Cockpit	13
Cockpit Mezzanine	13
Grill	13
Tackle Drawers	13
Refrigerated Port Mezzanine Undermounted Step Box	13
Teak Covering, Coaming Boards and Release Marine Fighting Chair	14
Seakeeper Gyro SK 26	14
Engine Room	14
Engine Room	14
Running	14

---

Port Side	14
Port Aft Quarter	15
Port View	15
Port Aft Quarter	15
Port Running View	15
CONTACTS	16
Contact details	16
Telephones	16
Office hours	16
Address	16

---

# SPECIFICATIONS

---

## Overview

---

**2019 VIKING 62' CONVERTIBLE!**

**EXTENDED WARRANTIES FOR THE MTU ENGINES AND SEAKEEPER!**

**2,000 Hour Service Completed 12/1/2021...Boat was at Viking for all maintenance items up-to-date!**

## Basic Information

---

**Category:** Sport Fisherman

**Model Year:** 2019

**Year Built:** 2019

**Country:** United States

## Dimensions

---

**LOA:** 62' (18.9mm)

**Beam:** 18.91

**Min Draft:** 5' 2" (1.57mm)

## Speed, Capacities and Weight

---

**Cruise Speed:** 32 Knots Kts. (37 MPH)

**Max Speed:** 43 Knots Kts. (49 MPH)

**Water Capacity:** 310 Gallons

**Holding Tank:** 152 Gal Gallons

**Fuel Capacity:** 2155 Gal Gallons

## Accommodations

---

**Total Cabins:** 4

**Total Heads:** 3

---

## Hull and Deck Information

---

**Hull Material:** Fiberglass

---

## Engine Information

---

**Engines:** 2

**Manufacturer:** MTU

**Engine Type:** Inboard

**Fuel Type:** Diesel

# PHOTOS

**Starboard Running Profile**



**Port Running Profile**



**Main Salon to Port**



**Salon Settee to Port Aft**



**Salon Settee and Dinette**



**Main Salon Looking Aft**



**Main Salon**



**Salon Starboard Side Galley View**



**Two Bar Stools and Galley**



**Salon and Flat Screen TV**



**Galley to Starboard**

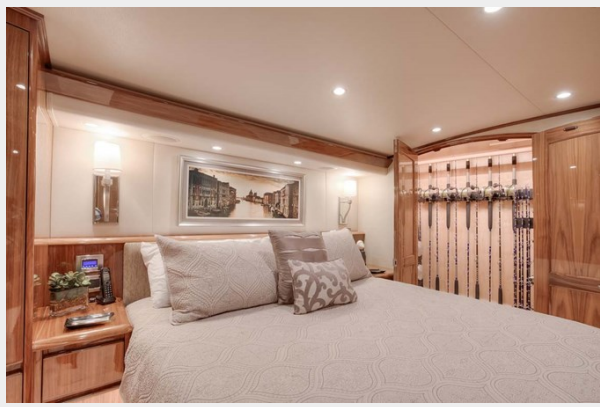


**Master Stateroom**





**Walkaround Queen Bed with Upholstered Headboard**



**Master Stateroom View to Flat Screen TV**



**Beautiful Maple Finish Cabinetry**



**One-Piece Custom Frameless Shower Door**



**Washer and Dryer and VIP Stateroom**



**VIP En-Suite Head**



**VIP Shower**



**Guest Twin Bunk Berths**



**Guest Flat Screen TV**



**Guest Head and Shower**



**Flybridge Port Forward Wet Bar**



**Flybridge Forward Seating**



**Bait Freezer**



**Drink Cooler**



**Helm Station**



**Helm Station**



**Helm Station with Overhead Electronics**



**Raised Dash for Electronics**



### Raised Dash for Electronics



### Raised Dash for Electronics



### Release Marine Trillion Series Helm Chairs with Ultraleather



### 24 Volt Teaser Reels



### Palm Beach Towers Helm Station



### Tower Helm Electronics



**Tower View to the Cockpit**



**Flybridge View to the Cockpit**



**Cockpit Mezzanine**



**Grill**



**Tackle Drawers**



**Refrigerated Port Mezzanine Undermounted Step Box**



**Seakeeper Gyro SK 26**



**Teak Covering, Coaming Boards and Release Marine Fighting Chair**



**Engine Room**



**Engine Room**



**Running**



**Port Side**



**Port View**



**Port Aft Quarter**



**Port Aft Quarter**



**Port Running View**



# CONTACTS

---

Andrey Shestakov, leading yacht broker of the sales department of Shestakov Yacht Sales Inc. Shestakov Yacht Sales Inc., the official representative of the Miami/Fort Lauderdale FL headquarters.

## Contact details

---

Email: [andrey@shestakovyachtsales.com](mailto:andrey@shestakovyachtsales.com)

Web: [shestakovyachtsales.com/en/](http://shestakovyachtsales.com/en/)

## Telephones

---

USA: +1(954)274-4435

## Office hours

---

Monday – Saturday: **9:00 - 21:00** EDT

Sunday: **closed**

## Address

---



Harbour Towne Marina, 850 NE 3rd St,  
STE 213, Dania, FL 33004