

SPLENDOR — CUSTOM



Builder: CUSTOM

Model: Racers and Cruisers

LOA: 47' 6" (14.48mm)

Max Draft: 7' (2.13mm)

Cruise Speed: 7 Knots Kts. (8 MPH)

Max Speed: 8 Knots Kts. (9 MPH)

Our experienced yacht broker, Andrey Shestakov, will help you choose and buy a yacht that best suits your needs **SPLENDOR — CUSTOM** from our catalogue. Presently, at Shestakov Yacht Sales Inc., we have a wide variety of yachts available on our sale's list. We also work in close contact with all the big yacht manufacturers from all over the world.

If you would like to buy a yacht **SPLENDOR — CUSTOM** or would like help answering any questions concerning purchasing, selling or chartering a yacht, please call **+1(954)274-4435**

TABLE OF CONTENTS

TABLE OF CONTENTS	2
SPECIFICATIONS	3
Overview	3
Basic Information	3
Dimensions	3
Speed, Capacities and Weight	3
Accommodations	3
Hull and Deck Information	4
Engine Information	4
PHOTOS	5
CONTACTS	17
Contact details	17
Telephones	17
Office hours	17
Address	17

SPECIFICATIONS

Overview

The custom wooden yacht 'Splendor' was conceived, designed and built by Gerald Driscoll at Driscoll's yard on Shelter Island in San Diego, California. She was started in the late 1970's and took several years to be completed. Driscoll was a perfectionist and this was to be his personal yacht. The boat was the family yacht until she was purchased by Dennis Conner (current owner). Her woodwork is unparalleled with the main salon made from a single plank of wood so the grain matches. Recently, the boat went through an entire refit with new topside paint and a new bottom, new self-tailing Harken electric winches, mast refit and painted, and new rigging. Splendor enjoys full time maintenance and is one of the finest classics available in the world.

Basic Information

Category: Racers and Cruisers

Model Year: 1984

Dimensions

LOA: 47' 6" (14.48mm)

Max Draft: 7' (2.13mm)

Speed, Capacities and Weight

Cruise Speed: 7 Knots Kts. (8 MPH)

Max Speed: 8 Knots Kts. (9 MPH)

Water Capacity: 80 Gallons

Holding Tank: 20 Gal Gallons

Fuel Capacity: 40 Gal Gallons

Accommodations

Total Cabins: 2

Total Berths: 3

Total Heads: 2

Hull and Deck Information

Hull Material: Wood

Engine Information

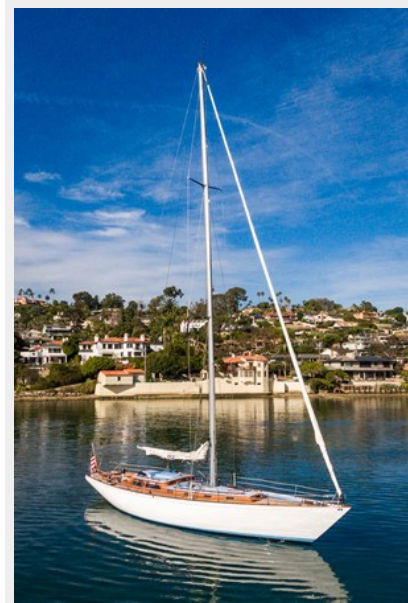
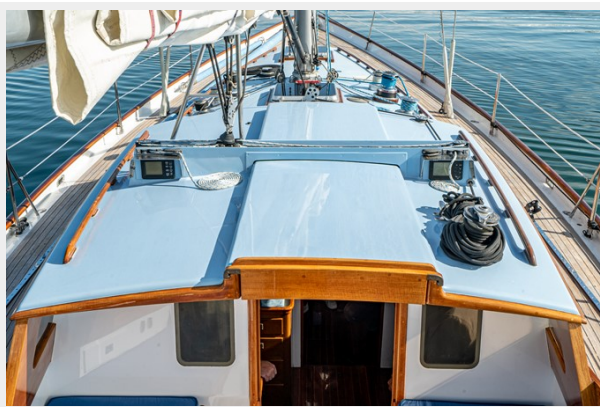
Engines: 1

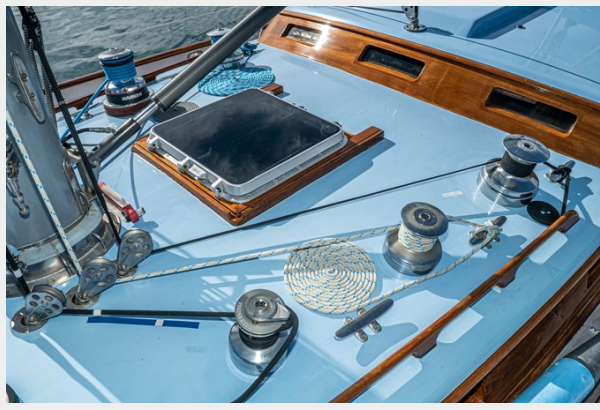
Manufacturer: Perkins

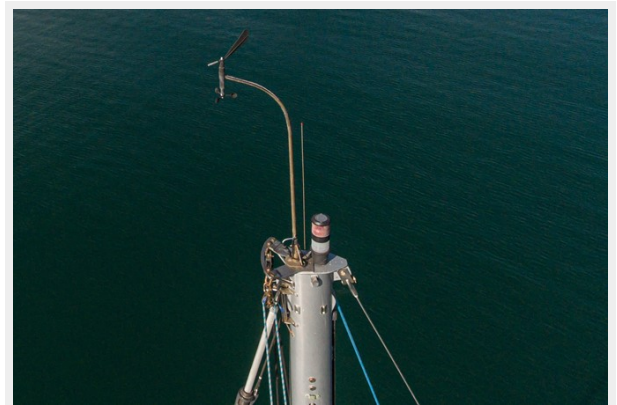
Engine Type: Inboard

Fuel Type: diesel

PHOTOS



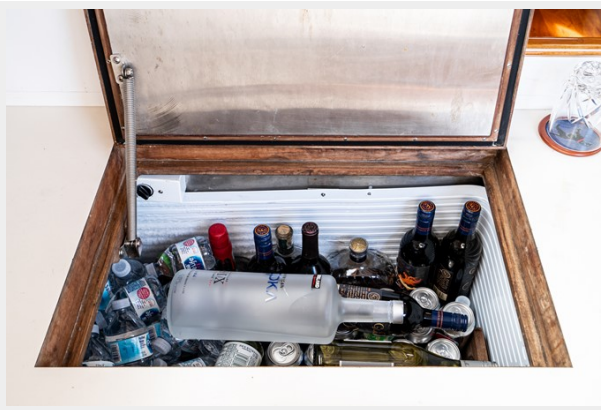
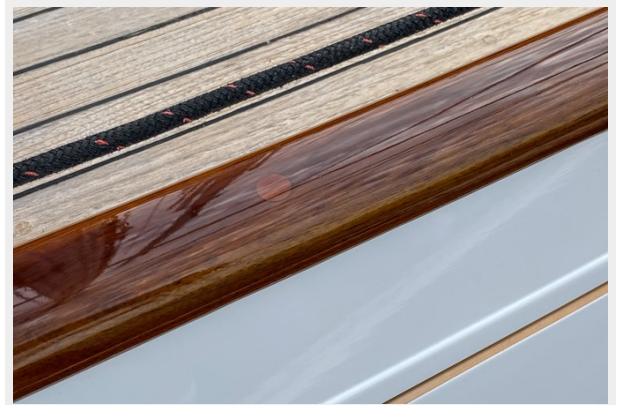


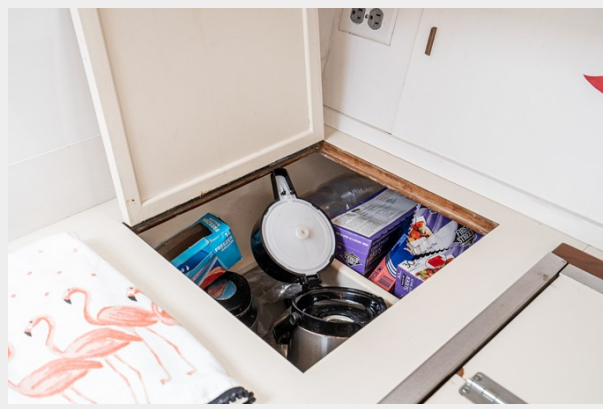






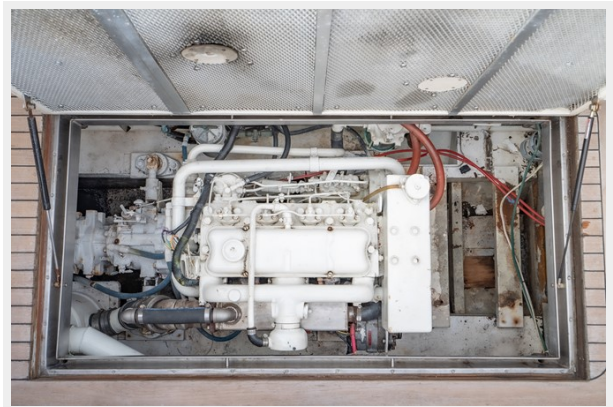
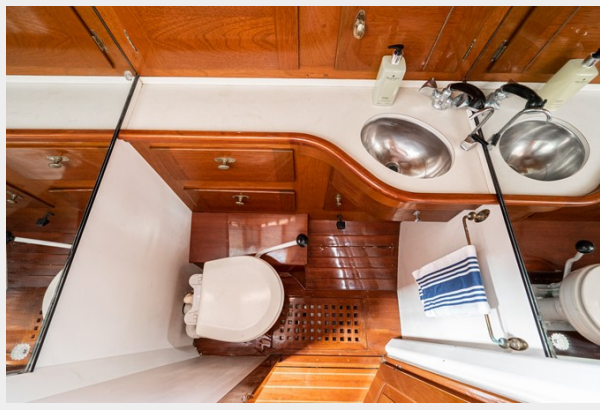














CONTACTS

Andrey Shestakov, leading yacht broker of the sales department of Shestakov Yacht Sales Inc. Shestakov Yacht Sales Inc., the official representative of the Miami/Fort Lauderdale FL headquarters.

Contact details

Email: andrey@shestakovyachtsales.com

Web: shestakovyachtsales.com/en/

Telephones

USA: +1(954)274-4435

Office hours

Monday – Saturday: **9:00 - 21:00** EDT

Sunday: **closed**

Address



Harbour Towne Marina, 850 NE 3rd St,
STE 213, Dania, FL 33004