

WICKED — B-BOATS



Builder: B-BOATS

Model: Racers

LOA: 32' (9.75mm)

Max Draft: 6' 6" (1.96mm)

Cruise Speed: 6 Knots Kts. (7 MPH)

Max Speed: 7 Knots Kts. (8 MPH)

Our experienced yacht broker, Andrey Shestakov, will help you choose and buy a yacht that best suits your needs **Wicked — B-BOATS** from our catalogue. Presently, at Shestakov Yacht Sales Inc., we have a wide variety of yachts available on our sale's list. We also work in close contact with all the big yacht manufacturers from all over the world.

If you would like to buy a yacht **Wicked — B-BOATS** or would like help answering any questions concerning purchasing, selling or chartering a yacht, please call **+1(954)274-4435**

TABLE OF CONTENTS

TABLE OF CONTENTS	2
SPECIFICATIONS	3
Overview	3
Basic Information	3
Dimensions	3
Speed, Capacities and Weight	3
Accommodations	3
Hull and Deck Information	4
Engine Information	4
PHOTOS	5
CONTACTS	11
Contact details	11
Telephones	11
Office hours	11
Address	11

SPECIFICATIONS

Overview

B32 Hull #7. One of the later B32's that is light and fast. A timeless design that is fast at all points of sail. Wicked is a well maintained example and ready to race! A note from designer Leif Beiley: I designed the B32 back in 1995 as a development of the B25, which we had a lot of success with. It was designed to excel in the conditions we usually have in southern California: 8-15 knot winds and ocean waves. We wanted a boat that wasn't extreme in any direction, just a good all-around performer that was affordable for people moving up from the smaller sportboats like the B25, Express 27, Moore 24, etc. Therefore we didn't use exotic materials in the structure or in the rig. The B32 won Sailing World's 1996 SportBoat Of The Year award and went on to have an illustrious record of wins in many major regattas. Twenty-five years on, B32's are still highly sought after and continue to win races.

Basic Information

Category: Racers

Model Year: 1995

Dimensions

LOA: 32' (9.75mm)

Max Draft: 6' 6" (1.96mm)

Speed, Capacities and Weight

Cruise Speed: 6 Knots Kts. (7 MPH)

Max Speed: 7 Knots Kts. (8 MPH)

Water Capacity: 1 Gallons

Holding Tank: 1 Gal Gallons

Fuel Capacity: 5 Gal Gallons

Accommodations

Total Cabins: 1

Total Berths: 6

Total Heads: 1

Hull and Deck Information

Hull Material: Fiberglass

Engine Information

Engines: 1

Manufacturer: Tohatsu

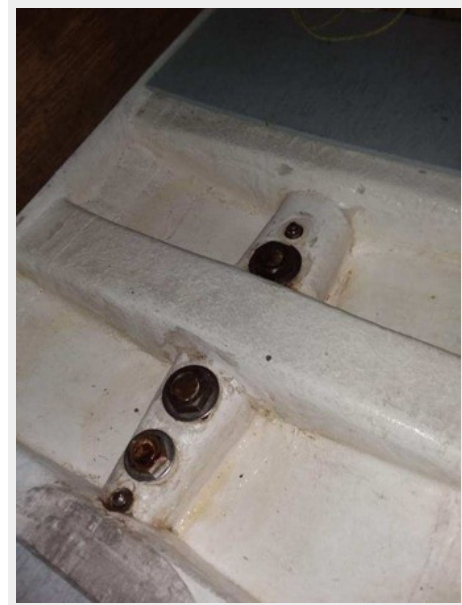
Engine Type: Outboard 4 Stroke

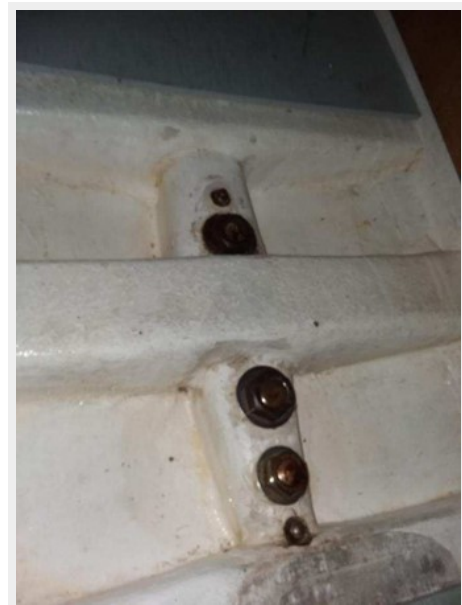
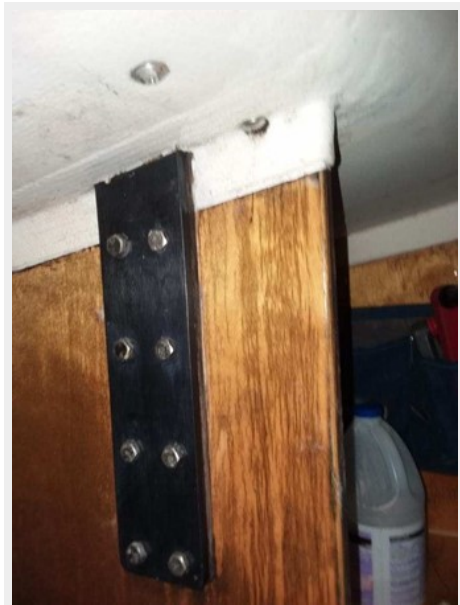
Fuel Type: unleaded

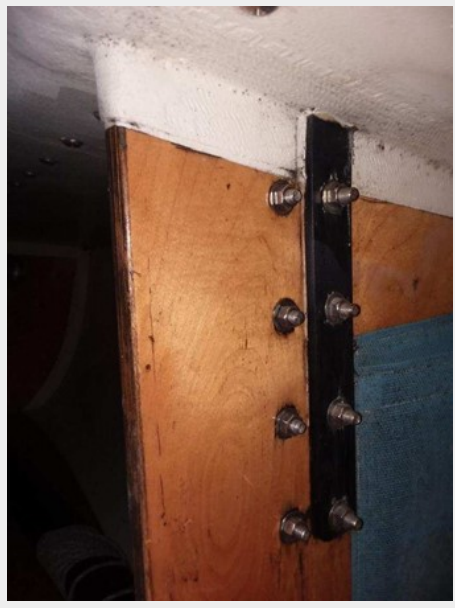
PHOTOS













CONTACTS

Andrey Shestakov, leading yacht broker of the sales department of Shestakov Yacht Sales Inc. Shestakov Yacht Sales Inc., the official representative of the Miami/Fort Lauderdale FL headquarters.

Contact details

Email: andrey@shestakovyachtsales.com

Web: shestakovyachtsales.com/en/

Telephones

USA: +1(954)274-4435

Office hours

Monday – Saturday: **9:00 - 21:00** EDT

Sunday: **closed**

Address



Harbour Towne Marina, 850 NE 3rd St,
STE 213, Dania, FL 33004