

## **NASSARA — AZIMUT**



**Builder:** AZIMUT

**Model:** Motor Yachts

**LOA:** 52' 9" (16.08mm)

**Max Draft:** 5' (1.52mm)

**Cruise Speed:** 26 Knots Kts. (30 MPH)

**Max Speed:** 31 Knots Kts. (36 MPH)

Our experienced yacht broker, Andrey Shestakov, will help you choose and buy a yacht that best suits your needs **Nassara — AZIMUT** from our catalogue. Presently, at **Shestakov Yacht Sales Inc.**, we have a wide variety of yachts available on our sale's list. We also work in close contact with all the big yacht manufacturers from all over the world.

If you would like to buy a yacht **Nassara — AZIMUT** or would like help answering any questions concerning purchasing, selling or chartering a yacht, please call **+1(954)274-4435**

---

# TABLE OF CONTENTS

---

TABLE OF CONTENTS	2
SPECIFICATIONS	3
Overview	3
Basic Information	3
Dimensions	3
Speed, Capacities and Weight	3
Accommodations	4
Hull and Deck Information	4
Engine Information	4
PHOTOS	5
CONTACTS	15
Contact details	15
Telephones	15
Office hours	15
Address	15

---

# SPECIFICATIONS

---

## Overview

---

LLC Owned Azimut 50 stands out for its flybridge, an open air deck featuring and extraordinary living and sunbathing area. Unprecedented spaciousness and unexpected solutions offer the comfort of larger yachts. Big windows for an infinite stunning view flooded by light both on the main and in the lower deck. A special model, one of a kind in its category and fully loaded. Electric mooring winches in cockpit- Seakeeper- Double Racor filters for main engines- Automatic Fire Fighting system- Air Conditioning- Chaincounter control at main helm- Electric searchlight- Additional searchlight control at lower helm- Racor filter for generator- Shore water plug- Miele appliances (microwave combo and cooktop)- Onan 13.5 kw Generator- Manouvering joystick- Bow thruster - External covers- Miele appliances - Cockpit chair- Flybridge furniture with sink, refrigerator and barbecue- Stainless steel refrigerator in galley + refrigerator in lower deck storage area Mosquito nets for potholes- Safe in master cabin- Set of linen for cabins- Set of pottery- Set of stainless steel cooking pans- Hard top and lots more.....Contact Rico at 310.729.2811

## Basic Information

---

**Category:** Motor Yachts

**Sub Category:** Flybridge

**Model Year:** 2020

## Dimensions

---

**LOA:** 52' 9" (16.08mm)

**Max Draft:** 5' (1.52mm)

## Speed, Capacities and Weight

---

**Cruise Speed:** 26 Knots Kts. (30 MPH) **Max Speed:** 31 Knots Kts. (36 MPH)

**Water Capacity:** 156 Gallons

**Fuel Capacity:** 581 Gal Gallons

---

## Accommodations

---

**Total Cabins:** 3

**Total Berths:** 4

---

## Hull and Deck Information

---

**Hull Material:** Fiberglass

---

## Engine Information

---

**Engines:** 1

**Manufacturer:** Volvo Penta

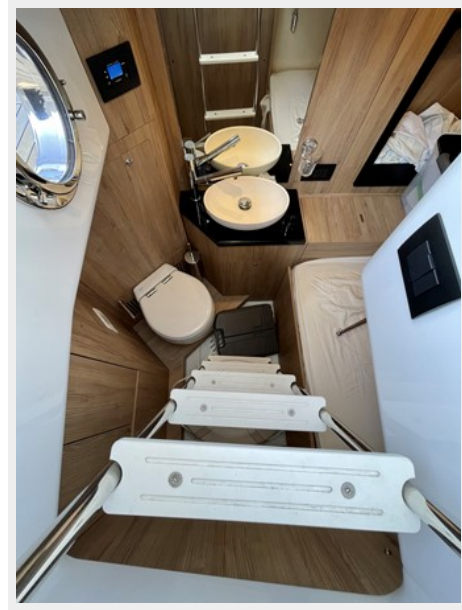
**Engine Type:** Inboard

**Fuel Type:** diesel

# PHOTOS



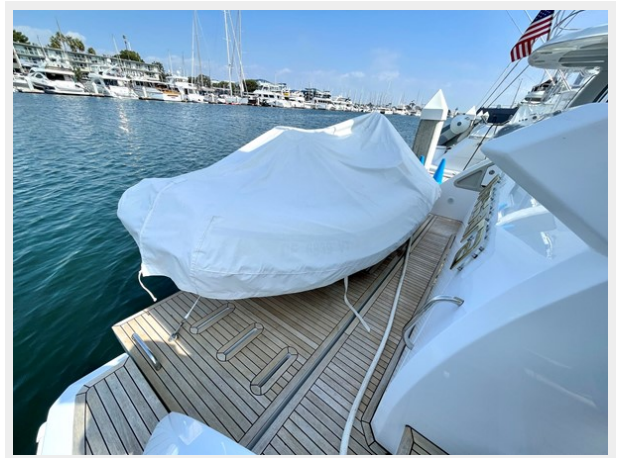








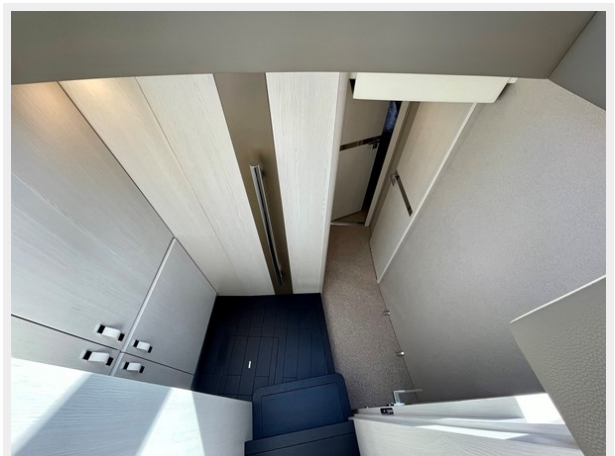




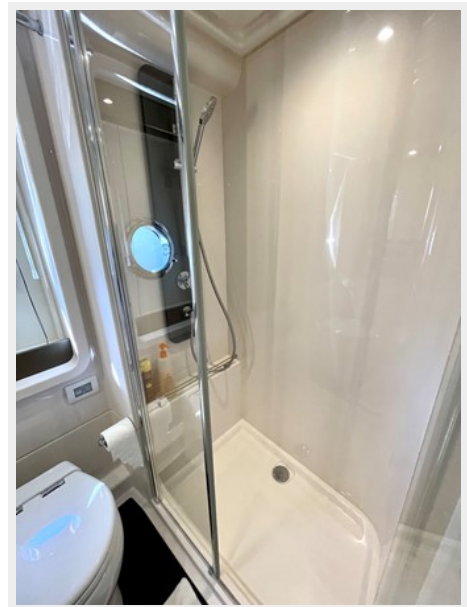




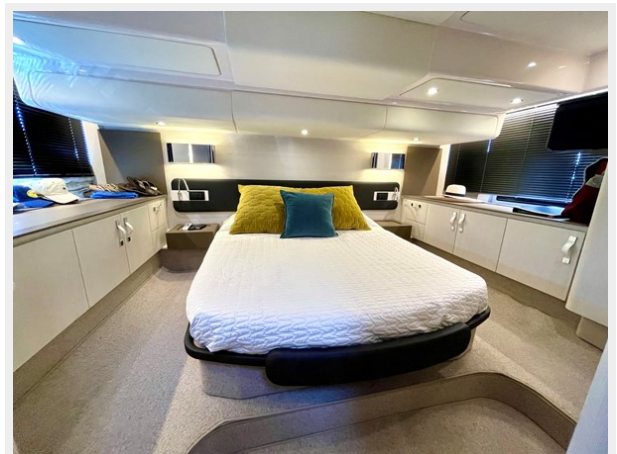
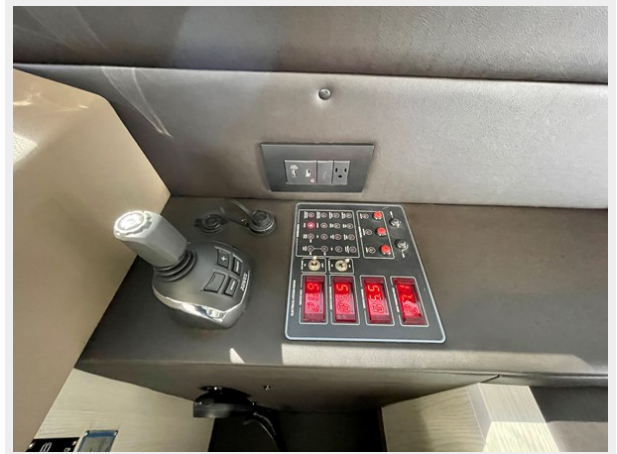




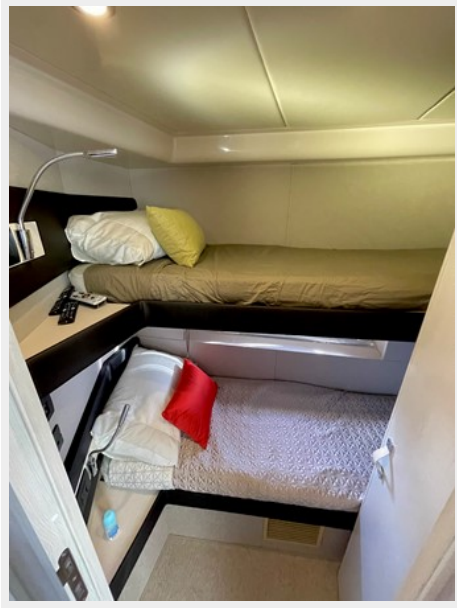
















# CONTACTS

---

Andrey Shestakov, leading yacht broker of the sales department of Shestakov Yacht Sales Inc. Shestakov Yacht Sales Inc., the official representative of the Miami/Fort Lauderdale FL headquarters.

## Contact details

---

Email: **andrey@shestakovyachtsales.com**

Web: [shestakovyachtsales.com/en/](https://shestakovyachtsales.com/en/)

## Telephones

---

USA: **+1(954)274-4435**

## Office hours

---

Monday – Saturday: **9:00 - 21:00** EDT

Sunday: **closed**

## Address

---



Harbour Towne Marina, 850 NE 3rd St, STE 213, Dania, FL 33004