

56 SPORT FISH — VIKING



Builder: VIKING

Year Built: 2005

Model: Sport Fisherman

Price: PRICE ON APPLICATION

Location: United States

LOA: 56' (17.07mm)

Beam: 18.16

Max Draft: 4' 10" (1.47mm)

Cruise Speed: 30 Knots Kts. (35 MPH)

Max Speed: 36 Knots Kts. (41 MPH)

Our experienced yacht broker, Andrey Shestakov, will help you choose and buy a yacht that best suits your needs **56 Sport Fish — VIKING** from **our catalogue**. Presently, at **Shestakov Yacht Sales Inc.**, we have a wide variety of yachts available on **our sale's list**. We also work in close contact with all the big **yacht manufacturers** from all over the world.

If you would like to buy a yacht **56 Sport Fish — VIKING** or would like help answering any questions concerning purchasing, selling or chartering a yacht, please call **+1(954)274-4435**

TABLE OF CONTENTS

TABLE OF CONTENTS	2
SPECIFICATIONS	5
Overview	5
Basic Information	5
Dimensions	5
Speed, Capacities and Weight	5
Accommodations	5
Hull and Deck Information	5
Engine Information	6
PHOTOS	7
7254274_20191017144456905_1_XLARGE	7
7254274_20191017144455602_1_XLARGE	7
7254274_20191017144627748_1_XLARGE	7
7254274_20191017144629047_1_XLARGE	7
7254274_20191017144632833_1_XLARGE	7
7254274_20191017144631566_1_XLARGE	7
7254274_20191017144625205_1_XLARGE	8
7254274_20191017144626492_1_XLARGE	8
7254274_20191017144630310_1_XLARGE	8
7254274_20191017144625205_1_XLARGE	8
7254274_20191017143737081_1_XLARGE	8
7254274_20191017143735924_1_XLARGE	8
7254274_20191017143832873_1_XLARGE	9
7254274_20191017143734587_1_XLARGE	9
7254274_20191017143827727_1_XLARGE	9
7254274_20191017143833980_1_XLARGE	9
7254274_20191017144623905_1_XLARGE	9
7254274_20191017143835147_1_XLARGE	9

7254274_20191017144622669_1_XLARGE	10
7254274_20191017144621495_1_XLARGE	10
7254274_20191017144458108_1_XLARGE	10
7254274_20191017144459337_1_XLARGE	10
7254274_20191017144319829_1_XLARGE	10
7254274_20191017144409038_1_XLARGE	10
7254274_20191017144321078_1_XLARGE	11
7254274_20191017143922034_1_XLARGE	11
7254274_20191017143836293_1_XLARGE	11
7254274_20191017143837402_1_XLARGE	11
7254274_20191017144451044_1_XLARGE	12
7254274_20191017144452212_1_XLARGE	12
7254274_20191017144453339_1_XLARGE	12
7254274_20191017144454356_1_XLARGE	12
7254274_20191017144417122_1_XLARGE	12
7254274_20191017144449836_1_XLARGE	12
7254274_20191017144317453_1_XLARGE	13
7254274_20191017144318611_1_XLARGE	13
7254274_20191017144412418_1_XLARGE	13
7254274_20191017144413617_1_XLARGE	13
7254274_20191017144414832_1_XLARGE	14
7254274_20191017144410178_1_XLARGE	14
7254274_20191017144411222_1_XLARGE	14
7254274_20191017144448713_1_XLARGE	14
7254274_20191017144036862_1_XLARGE	14
7254274_20191017144039138_1_XLARGE	14
7254274_20191017144040231_1_XLARGE	15
7254274_20191017144043581_1_XLARGE	15
7254274_20191017144044706_1_XLARGE	15

7254274_20191017144041384_1_XLARGE	15
7254274_20191017144042496_1_XLARGE	15
7254274_20191017144037989_1_XLARGE	15
7254274_20191017144045876_1_XLARGE	16
7254274_20191017144314123_1_XLARGE	16
7254274_20191017144315251_1_XLARGE	16
7254274_20191017144316252_1_XLARGE	16
7254274_20191017144416008_1_XLARGE	16
7254274_20191017143731902_1_XLARGE	16
7254274_20191017143932716_1_XLARGE	17
7254274_20191017144035202_1_XLARGE	17
7254274_20191017143923177_1_XLARGE	17
7254274_20191017143924374_1_XLARGE	17
7254274_20191017143925609_1_XLARGE	17
7254274_20191017143926848_1_XLARGE	17
7254274_20191017143927979_1_XLARGE	18
7254274_20191017143929184_1_XLARGE	18
7254274_20191017143930337_1_XLARGE	18
7254274_20191017143931561_1_XLARGE	18
20180715_012017	19
CONTACTS	20
Contact details	20
Telephones	20
Office hours	20
Address	20

SPECIFICATIONS

Overview

This 56 Convertible is a proven tournament winner with over \$2 million in the past 3 years! She shares the sleek lines of its newer stablemates, however, the 56' Viking is nearly a foot wider with its 18'2" beam. It offers a spacious layout, with 3-Staterooms, 2-Heads, and a Galley-Up floor plan. The 56' also features a significantly larger flying bridge deck which can comfortably accommodate a large group of family/guests for entertaining. This particular 56' Viking is in excellent condition and is seriously for sale.

Basic Information

Category: Sport Fisherman

Model Year: 2005

Year Built: 2005

Country: United States

Dimensions

LOA: 56' (17.07mm)

LWL: 51' (15.54mm)

Beam: 18.16

Max Draft: 4' 10" (1.47mm)

Speed, Capacities and Weight

Cruise Speed: 30 Knots Kts. (35 MPH) **Max Speed:** 36 Knots Kts. (41 MPH)

Water Capacity: 260 Gallons

Fuel Capacity: 1490 Gal Gallons

Accommodations

Total Cabins: 3

Total Heads: 2

Hull and Deck Information

Hull Material: Fiberglass

Engine Information

Engines: 2

Manufacturer: MTU

Engine Type: Inboard

PHOTOS

7254274_20191017144456905_1_XLARGE 7254274_20191017144455602_1_XLARGE



7254274_20191017144627748_1_XLARGE 7254274_20191017144629047_1_XLARGE



7254274_20191017144632833_1_XLARGE 7254274_20191017144631566_1_XLARGE



7254274_20191017144625205_1_XLARGE 7254274_20191017144626492_1_XLARGE



7254274_20191017144630310_1_XLARGE

7254274_20191017144625205_1_XLARGE



7254274_20191017143737081_1_XLARGE



7254274_20191017143735924_1_XLARGE



7254274_20191017143832873_1_XLARGE 7254274_20191017143734587_1_XLARGE

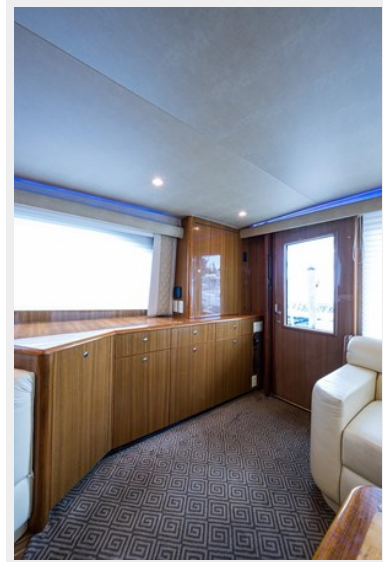


7254274_20191017143827727_1_XLARGE 7254274_20191017143833980_1_XLARGE



7254274_20191017144623905_1_XLARGE

7254274_20191017143835147_1_XLARGE



7254274_20191017144622669_1_XLARGE 7254274_20191017144621495_1_XLARGE



7254274_20191017144458108_1_XLARGE 7254274_20191017144459337_1_XLARGE



7254274_20191017144319829_1_XLARGE 7254274_20191017144409038_1_XLARGE



7254274_20191017144321078_1_XLARGE



7254274_20191017143922034_1_XLARGE



7254274_20191017143836293_1_XLARGE



7254274_20191017143837402_1_XLARGE



7254274_20191017144451044_1_XLARGE

7254274_20191017144452212_1_XLARGE



7254274_20191017144453339_1_XLARGE 7254274_20191017144454356_1_XLARGE



7254274_20191017144417122_1_XLARGE 7254274_20191017144449836_1_XLARGE



7254274_20191017144317453_1_XLARGE



7254274_20191017144318611_1_XLARGE



7254274_20191017144412418_1_XLARGE 7254274_20191017144413617_1_XLARGE



7254274_20191017144414832_1_XLARGE 7254274_20191017144410178_1_XLARGE



7254274_20191017144411222_1_XLARGE 7254274_20191017144448713_1_XLARGE



7254274_20191017144036862_1_XLARGE 7254274_20191017144039138_1_XLARGE



7254274_20191017144040231_1_XLARGE



7254274_20191017144043581_1_XLARGE



7254274_20191017144044706_1_XLARGE 7254274_20191017144041384_1_XLARGE



7254274_20191017144042496_1_XLARGE 7254274_20191017144037989_1_XLARGE



7254274_20191017144045876_1_XLARGE



7254274_20191017144314123_1_XLARGE

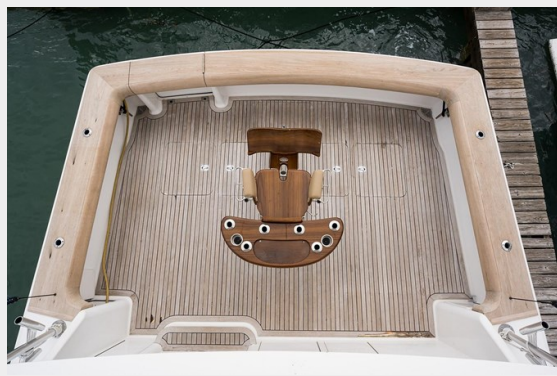


7254274_20191017144315251_1_XLARGE 7254274_20191017144316252_1_XLARGE



7254274_20191017144416008_1_XLARGE

7254274_20191017143731902_1_XLARGE



7254274_20191017143932716_1_XLARGE 7254274_20191017144035202_1_XLARGE



7254274_20191017143923177_1_XLARGE 7254274_20191017143924374_1_XLARGE



7254274_20191017143925609_1_XLARGE 7254274_20191017143926848_1_XLARGE



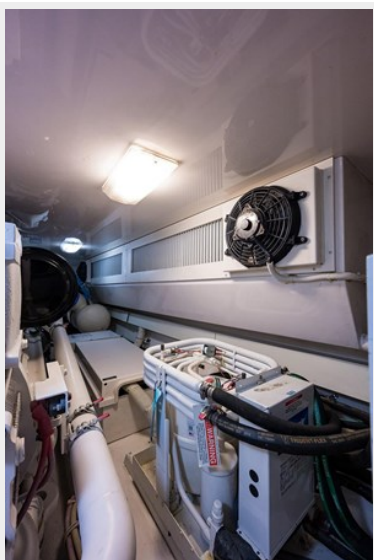
7254274_20191017143927979_1_XLARGE



7254274_20191017143929184_1_XLARGE



7254274_20191017143930337_1_XLARGE



7254274_20191017143931561_1_XLARGE



20180715_012017



CONTACTS

Andrey Shestakov, leading yacht broker of the sales department of Shestakov Yacht Sales Inc. Shestakov Yacht Sales Inc., the official representative of the Miami/Fort Lauderdale FL headquarters.

Contact details

Email: **andrey@shestakovyachtsales.com**

Web: shestakovyachtsales.com/en/

Telephones

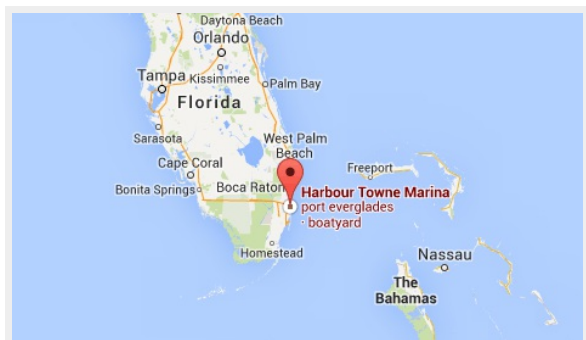
USA: **+1(954)274-4435**

Office hours

Monday – Saturday: **9:00 - 21:00** EDT

Sunday: **closed**

Address



Harbour Towne Marina, 850 NE 3rd St, STE 213, Dania, FL 33004