

EL CHUPACABRA — MERRITT BOAT WORKS



Builder: MERRITT BOAT WORKS

Year Built: 2006

Model: Sport Fisherman

Price: PRICE ON APPLICATION

Location: United States

LOA: 80' (24.38mm)

Beam: 20.33

Max Draft: 5' 6" (1.68mm)

Cruise Speed: 28 Knots Kts. (32 MPH)

Max Speed: 36 Knots Kts. (41 MPH)

Our experienced yacht broker, Andrey Shestakov, will help you choose and buy a yacht that best suits your needs El Chupacabra — MERRITT BOAT WORKS from our catalogue. Presently, at Shestakov Yacht Sales Inc., we have a wide variety of yachts available on our sale's list. We also work in close contact with all the big yacht manufacturers from all over the world.

If you would like to buy a yacht El Chupacabra — MERRITT BOAT WORKS or would like help answering any questions concerning purchasing, selling or chartering a yacht, please call +1(954)274-4435

TABLE OF CONTENTS

TABLE OF CONTENTS	2
SPECIFICATIONS	5
Overview	5
Basic Information	5
Dimensions	5
Speed, Capacities and Weight	5
Accommodations	5
Hull and Deck Information	5
Engine Information	6
PHOTOS	7
Forward Salon and Galley	7
Starboard Profile	7
Salon	7
Salon Aft Lounge Seating	7
Wet Bar and Pop-Up TV	7
Galley	7
Galley Storage	8
Galley Drawers	8
Dinette	8
Pantry - Electronics Room	8
Breaker Panel	8
Pullman Berth	8
Crestron System	9
Breaker Panel	9
Companionway	9
Master Stateroom	9
Master Berth	9
Master Double Door Entry	9

Master Porthole	10
Master Head	10
Aft Companionway	10
Forward Berth	10
Guest Head	11
Guest Stateroom	11
Crew Quarters and Engine Room Access	11
Crew Head	11
Engine Room	11
Mezzanine	11
Flybridge Helm Chairs	12
Helm Electronics	12
Thruster Engine Control Box	12
Helm	12
Radio and Navigation Box	12
Teaser Reels	12
Forward Flybridge Seating	13
FLIR Camera Tower	13
Bow Running View	13
Foredeck	13
Furuno Sweep	13
Cockpit Switches	13
Engine Room	14
MTU 16V2000 Engine	14
MTU 16V2000 Engine	14
MTU 16V2000 Engine Bed	14
Batteries	14
Transfer Valves	14
Fuel Filters	15

Generator Panel	15
Pump Room - Tool Box - Compressor	15
Fire Extinguishers	15
Pump Room	15
Stern View	15
Mezzanine - Etched Glass - Bulkhead Windows	16
Mezzanine Refrigeration	16
Cockpit	16
Bluewater Offset Chair	16
Aerial View	16
59 On The Hard	16
60 Running Gear	17
61 On The Hard	17
62 Running	17
63 Running	17
65 Starboard Side	17
64 Starboard Bow	17
CONTACTS	18
Contact details	18
Telephones	18
Office hours	18
Address	18

SPECIFICATIONS

Overview

2006 Merritt 80' Custom Sportfish Yacht

Basic Information

Category: Sport Fisherman

Model Year: 2006

Year Built: 2006

Country: United States

Dimensions

LOA: 80' (24.38mm)

Beam: 20.33

Max Draft: 5' 6" (1.68mm)

Speed, Capacities and Weight

Cruise Speed: 28 Knots Kts. (32 MPH)

Max Speed: 36 Knots Kts. (41 MPH)

Water Capacity: 450 Gallons

Holding Tank: 125 Gal Gallons

Fuel Capacity: 3051 Gal Gallons

Accommodations

Total Cabins: 4

Total Heads: 4

Hull and Deck Information

Hull Material: Composite

Engine Information

Engines: 2

Manufacturer: MTU

Engine Type: Inboard

Fuel Type: Diesel

PHOTOS

Starboard Profile



Forward Salon and Galley



Salon



Salon Aft Lounge Seating



Wet Bar and Pop-Up TV



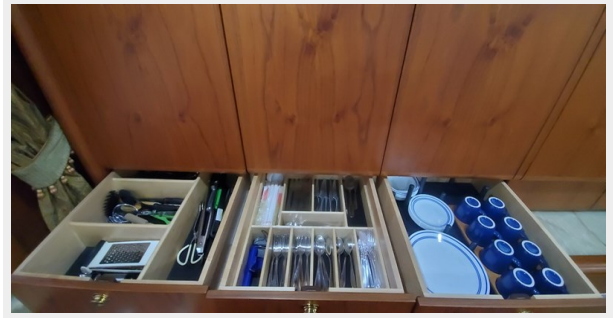
Galley



Galley Storage



Galley Drawers



Dinette



Pantry - Electronics Room



Pullman Berth



Breaker Panel



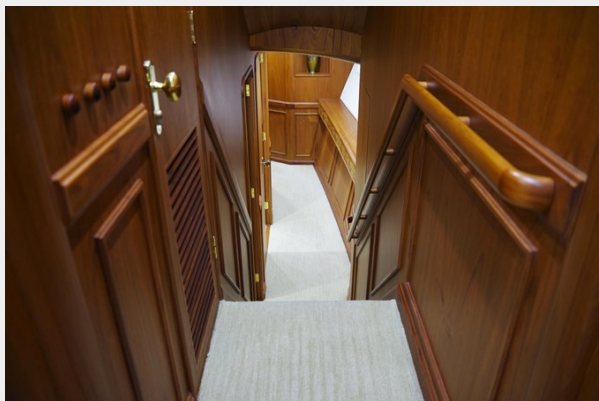
Breaker Panel



Crestron System



Companionway



Master Stateroom



Master Double Door Entry



Master Berth



Master Porthole



Master Head



Forward Berth



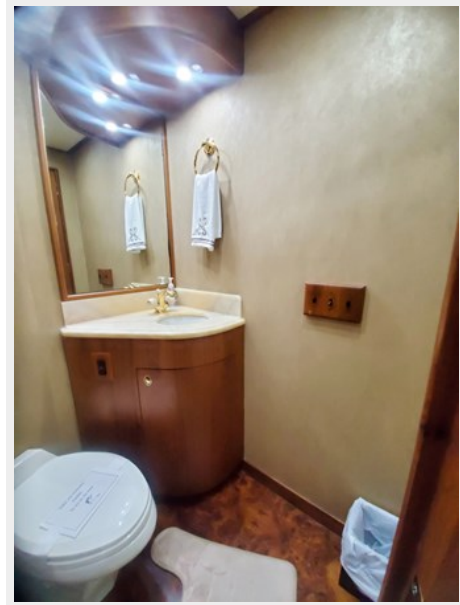
Aft Companionway



Guest Stateroom



Guest Head



Crew Quarters and Engine Room Access



Crew Head



Engine Room



Mezzanine



Flybridge Helm Chairs



Helm Electronics



Helm



Thruster Engine Control Box



Radio and Navigation Box



Teaser Reels



Forward Flybridge Seating



FLIR Camera Tower



Bow Running View



Foredeck



Furuno Sweep



Cockpit Switches



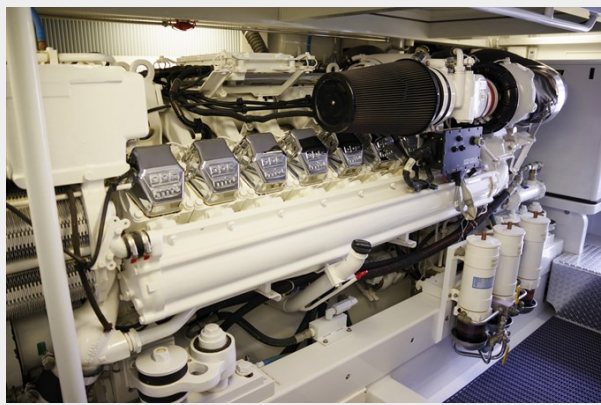
Engine Room



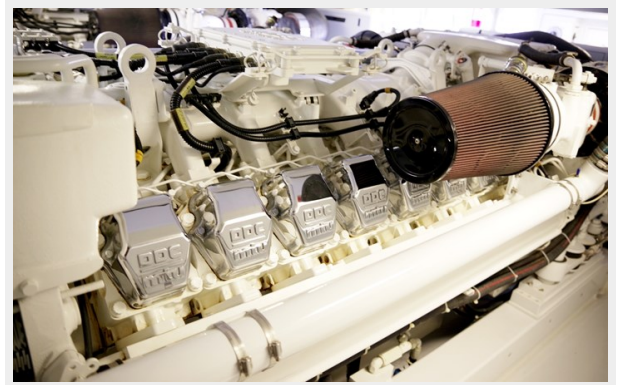
MTU 16V2000 Engine



MTU 16V2000 Engine



MTU 16V2000 Engine Bed



Batteries



Transfer Valves



Generator Panel



Fuel Filters



Fire Extinguishers



Pump Room - Tool Box - Compressor



Pump Room



Stern View



Mezzanine - Etched Glass - Bulkhead Windows



Mezzanine Refrigeration



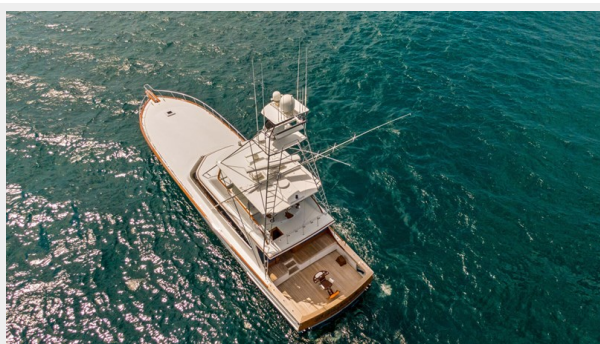
Cockpit



Bluewater Offset Chair



Aerial View



59 On The Hard



60 Running Gear



61 On The Hard



62 Running



63 Running



64 Starboard Bow



65 Starboard Side



CONTACTS

Andrey Shestakov, leading yacht broker of the sales department of Shestakov Yacht Sales Inc. Shestakov Yacht Sales Inc., the official representative of the Miami/Fort Lauderdale FL headquarters.

Contact details

Email: andrey@shestakovyachtsales.com

Web: shestakovyachtsales.com/en/

Telephones

USA: +1(954)274-4435

Office hours

Monday – Saturday: **9:00 - 21:00** EDT

Sunday: **closed**

Address



Harbour Towne Marina, 850 NE 3rd St,
STE 213, Dania, FL 33004