

SLEEKO — BERTRAM



Builder: BERTRAM

Year Built: 2006

Model: Yacht Fisherman

Price: PRICE ON APPLICATION

Location: United States

LOA: 63' (19.2mm)

Beam: 18

Max Draft: 5' 3" (1.6mm)

Cruise Speed: 34 Knots Kts. (39 MPH)

Max Speed: 41 Knots Kts. (47 MPH)

Our experienced yacht broker, Andrey Shestakov, will help you choose and buy a yacht that best suits your needs **SLEEKO — BERTRAM** from our catalogue. Presently, at Shestakov Yacht Sales Inc., we have a wide variety of yachts available on our sale's list. We also work in close contact with all the big yacht manufacturers from all over the world.

If you would like to buy a yacht **SLEEKO — BERTRAM** or would like help answering any questions concerning purchasing, selling or chartering a yacht, please call **+1(954)274-4435**

TABLE OF CONTENTS

TABLE OF CONTENTS	2
SPECIFICATIONS	4
Overview	4
Basic Information	4
Dimensions	4
Speed, Capacities and Weight	4
Accommodations	5
Hull and Deck Information	5
Engine Information	5
PHOTOS	6
77AC5FA5-C1DA-419E-90D8-4B98805AFC62	6
23E6E0E3-01C3-40F0-95EC-52D6E15C1EA5	6
F9E5EDAD-B32F-48EE-B19B-2FE3ABAF41DA	6
2767611E-C36E-491B-9E39-1C18252CD9B5	6
97A987FC-9496-442B-860E-D9EB616AFC7B	7
75E6AD0E-6D22-49D9-A177-2AD095808392	7
C725438F-2231-4B8D-A23A-D0AF1142B484	7
4F0425A2-671D-4552-BF3B-C396FE8DA865	7
6993D560-115B-435C-BAF4-D945982FE836	8
3EE0E113-6BA4-4690-8121-D4E5CDA84723	8
CE35D72A-375C-4CB1-B7CD-4D945743EECB	8
BF4281B2-2205-4D43-B886-BFAC143923C4	8
3DC286D7-16A6-481F-8560-8F634CF5B83D	9
D99084A7-8F03-4889-AB53-416758291445	9
0BCE91E2-1DF9-4666-8FD8-46FE56F6F15E	9
73AD9436-E05E-4356-9495-05D04AEF08DB	9
0D877DB0-DBD8-400C-AC1D-99E220CB04C4	10
6C9294D8-E931-4F82-8DDE-0DFAFA05FEAF	10

790264B2-2345-4E4A-94B3-92A660EE27A1	10
D766E6ED-4913-46E3-A37F-75FB57891DA8	10
A23BFEDD-D2CB-4E9A-885B-03B2361E5F2C	11
7737828D-8F94-4AAA-A7C7-BAC0000DF2A7	11
A94C58C6-C680-4B53-9D9E-BA37D7214C1A	11
0F11D074-BDB0-4717-B216-54173253BFCA	11
CC355F32-4746-4C6E-BB47-110C7C12B8BB	12
EC1C2372-9340-4682-B9AA-7B6B109D1488	12
1ED7F318-0CA4-4F38-BFCC-BF08B969A43C	12
97A900B4-6D85-4A2F-9207-75675ECA7AB9	12
D1CD9727-0D1D-42B0-AE0E-AB4D1140D9FE	13
6DDC73F1-E157-4BAE-AF29-01A11038567C	13
AC7F6782-7A05-458F-BCB6-E1453693EABC	13
D3CC7579-C5E2-4CC8-B6AE-075CB86EBEBF	13
D7CBD274-AA2B-48C9-BFD5-05183D796703	14
06820DFD-38E2-487A-989A-913C74CF2FCC	14
6712D8BB-9F56-48A2-8BB7-9FAD0EF3AA20	14
A9F3EC3F-C038-4174-A913-1D177622018D	14
sleeko - side	15
sleeko - bottom	15
CONTACTS	16
Contact details	16
Telephones	16
Office hours	16
Address	16

SPECIFICATIONS

Overview

"Sleeko " has just completed 3000 Hour Service & is ready to Fish !

Sleeko has just had the bottom painted & the Props & Shafts were coated with PropSpeed . A new cockpit shade was just fabricated & installed . This is a clean 2006 Bertram, very well equipped for fishing or cruising, KVH TV, sat phone and two Air conditioning units on the bridge to keep cool in the new enclosure. The MTU engines give tremendous performance. She has great sleeping accommodations with two queen births as well as a set of bunk beds and the master king. She has some updated Garmin electronics as well as the Furuno radar. a bow thruster and many other options.

Basic Information

Category: Yacht Fisherman

Sub Category: Yacht Fisherman

Model Year: 2006

Year Built: 2006

Country: United States

Dimensions

LOA: 63' (19.2mm)

Beam: 18

Max Draft: 5' 3" (1.6mm)

Speed, Capacities and Weight

Cruise Speed: 34 Knots Kts. (39 MPH)

Max Speed: 41 Knots Kts. (47 MPH)

Gross Tonnage: 76 Pounds

Water Capacity: 350 Gallons

Fuel Capacity: 1850 Gal Gallons

Accommodations

Total Cabins: 4

Total Berths: 6

Sleeps: 8

Total Heads: 3

Hull and Deck Information

Hull Material: Fiberglass

Deck Material: Fiberglass

Hull Configuration: Deep Vee

Hull Color: White

Hull Designer: Bertram

Engine Information

Engines: 2

Manufacturer: MTU

Engine Type: Inboard

Fuel Type: Diesel

PHOTOS

77AC5FA5-C1DA-419E-90D8-4B98805AFC62



23E6E0E3-01C3-40F0-95EC-52D6E15C1EA5



2767611E-C36E-491B-9E39-1C18252CD9B5



F9E5EDAD-B32F-48EE-B19B-2FE3ABAF41DA



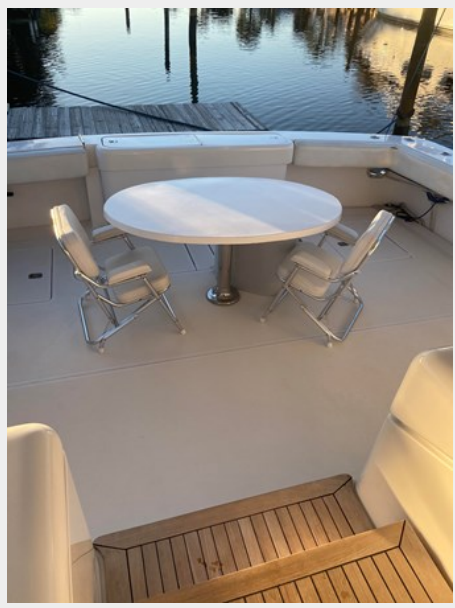
97A987FC-9496-442B-860E-
D9EB616AFC7B



75E6AD0E-6D22-49D9-A177-2AD095808392



C725438F-2231-4B8D-A23A-D0AF1142B484 4F0425A2-671D-4552-BF3B-C396FE8DA865

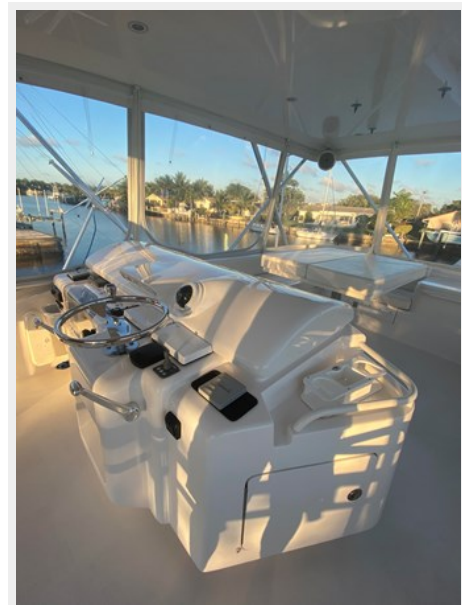


6993D560-115B-435C-BAF4-D945982FE836 3EE0E113-6BA4-4690-8121-D4E5CDA84723



BF4281B2-2205-4D43-B886-BFAC143923C4

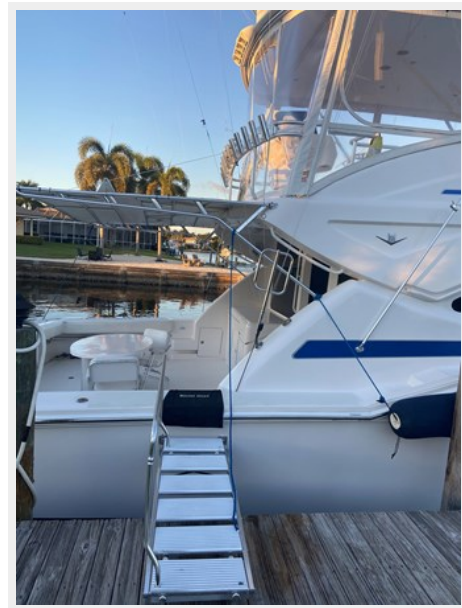
CE35D72A-375C-4CB1-B7CD-4D945743EECB



3DC286D7-16A6-481F-8560-8F634CF5B83D D99084A7-8F03-4889-AB53-416758291445



0BCE91E2-1DF9-4666-8FD8-46FE56F6F15E 73AD9436-E05E-4356-9495-05D04AEF08DB



0D877DB0-DBD8-400C-AC1D-
99E220CB04C4



6C9294D8-E931-4F82-8DDE-
0DFafa05FEAF



790264B2-2345-4E4A-94B3-92A660EE27A1 D766E6ED-4913-46E3-A37F-75FB57891DA8



**A23BFEDD-D2CB-4E9A-885B-
03B2361E5F2C**



**7737828D-8F94-4AAA-A7C7-
BAC0000DF2A7**



**A94C58C6-C680-4B53-9D9E-
BA37D7214C1A**



0F11D074-BDB0-4717-B216-54173253BFCA



EC1C2372-9340-4682-B9AA-7B6B109D1488



CC355F32-4746-4C6E-BB47-110C7C12B8BB



1ED7F318-0CA4-4F38-BFCC-BF08B969A43C



97A900B4-6D85-4A2F-9207-75675ECA7AB9



**D1CD9727-0D1D-42B0-AE0E-
AB4D1140D9FE**



**6DDC73F1-E157-4BAE-AF29-
01A11038567C**



**AC7F6782-7A05-458F-BCB6-
E1453693EABC**



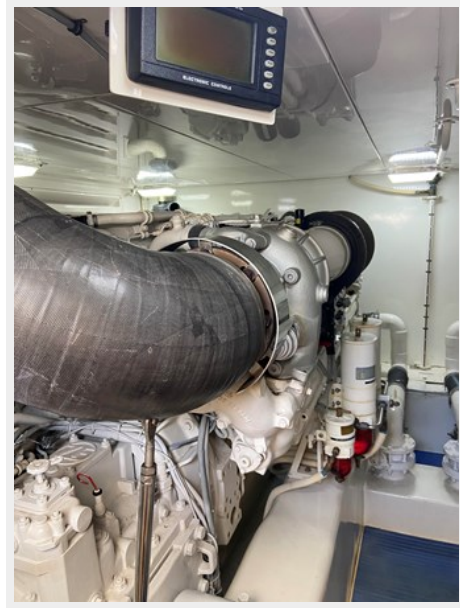
**D3CC7579-C5E2-4CC8-B6AE-
075CB86EBEBF**



**D7CBD274-AA2B-48C9-BFD5-
05183D796703**



06820DFD-38E2-487A-989A-913C74CF2FCC



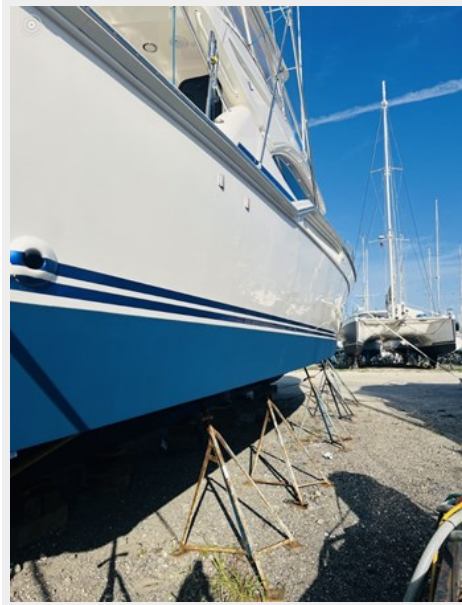
**6712D8BB-9F56-48A2-8BB7-
9FAD0EF3AA20**



A9F3EC3F-C038-4174-A913-1D177622018D



sleeko - side



sleeko - bottom



CONTACTS

Andrey Shestakov, leading yacht broker of the sales department of Shestakov Yacht Sales Inc. Shestakov Yacht Sales Inc., the official representative of the Miami/Fort Lauderdale FL headquarters.

Contact details

Email: andrey@shestakovyachtsales.com

Web: shestakovyachtsales.com/en/

Telephones

USA: +1(954)274-4435

Office hours

Monday – Saturday: **9:00 - 21:00** EDT

Sunday: **closed**

Address



Harbour Towne Marina, 850 NE 3rd St,
STE 213, Dania, FL 33004