

IRISH MISS — MARLOW



Builder: MARLOW

Year Built: 2002

Model: Cruising Yacht

Price: PRICE ON APPLICATION

Location: United States

LOA: 74' (22.56mm)

Beam: 18.33

Cruise Speed: 18 Knots Kts. (21 MPH)

Max Speed: 21 Knots Kts. (24 MPH)

Our experienced yacht broker, Andrey Shestakov, will help you choose and buy a yacht that best suits your needs **IRISH MISS — MARLOW** from **our catalogue**. Presently, at **Shestakov Yacht Sales Inc.**, we have a wide variety of yachts available on **our sale's list**. We also work in close contact with all the big **yacht manufacturers** from all over the world.

If you would like to buy a yacht **IRISH MISS — MARLOW** or would like help answering any questions concerning purchasing, selling or chartering a yacht, please call **+1(954)274-4435**

TABLE OF CONTENTS

TABLE OF CONTENTS	2
SPECIFICATIONS	5
Overview	5
Basic Information	5
Dimensions	5
Speed, Capacities and Weight	5
Accommodations	5
Hull and Deck Information	6
Engine Information	6
PHOTOS	7
Aft Deck Seat	7
Aft Deck 2	7
Salon Doors	7
Bow 1	7
Boat Deck	7
Upper Helm	7
Helm Station	8
Flybridge Seating Potside	8
Salon Seating	8
Salon looking Aft	8
Salon Starboard Aft	8
Salon Settee	8
Salon Looking Forward	9
Salon Bar	9
Dining Room Table	9
Stairs from Galley to Salon and FB	9
Galley 1	9
Galley Looking Aft	9

Galley Looking Aft 2	10
Galley	10
Lower Helm	10
Settee in Pilothouse	10
Lower Helm	10
Master Berth	10
Master 1	11
Master looking Aft	11
Master	11
Aft Master Office and Laundry	11
Master 2	11
Master Head	11
Master Head 2	12
VIP Bed	12
VIP to VIP Head	12
VIP Head	12
Port Guest	12
Port Bunks	12
Port Guest looking Forward	13
Port Guest Head	13
Master 2nd Sink and Separate Shower	13
Lazarette	13
Generators Aft Engine Room	13
Generator Stbd Side	13
Engine Room Looking Forward	14
Generator Port Side	14
Port Engine	14
Starboard Engine	14
Engine Room Starboard Side	14

Engine Room Port Side	14
CONTACTS	15
Contact details	15
Telephones	15
Office hours	15
Address	15

SPECIFICATIONS

Overview

Irish Miss is a beautiful yacht that has been babied, maintained and extensively upgraded in the last few years. The 800 HP 3406E Caterpillar Engines let her burn a mere 8 GPH total at 8-knots and still provide an 12-18-knot cruise and 21-knot top speed. The original generators have been replaced. The engines and generators have been serviced professionally on a regular basis and she is ready to cruise. She is a great sea boat with twin keels that fully protect the propellers. She also is stabilized (new in 2021), and the teak decks look great. She also boasts a new top-of-the-line yacht controller to allow remote docking and maneuvering underway.

Basic Information

Category: Cruising Yacht

Model Year: 2002

Year Built: 2002

Country: United States

Dimensions

LOA: 74' (22.56mm)

Beam: 18.33

Speed, Capacities and Weight

Cruise Speed: 18 Knots Kts. (21 MPH) **Max Speed:** 21 Knots Kts. (24 MPH)

Water Capacity: 475 Gallons

Holding Tank: 120 Gal Gallons

Fuel Capacity: 1600 Gal Gallons

Accommodations

Total Cabins: 3

Hull and Deck Information

Hull Material: Fiberglass

Exterior Designer: Marlow Yachts

Interior Designer: Marlow Design
Team

Engine Information

Engines: 2

Manufacturer: Caterpillar

PHOTOS

Aft Deck Seat



Aft Deck 2



Salon Doors



Bow 1



Boat Deck



Upper Helm



Helm Station



Flybridge Seating Potside



Salon Seating



Salon looking Aft



Salon Starboard Aft



Salon Settee



Salon Looking Forward



Salon Bar



Dining Room Table



Stairs from Galley to Salon and FB



Galley 1



Galley Looking Aft



Galley Looking Aft 2



Galley



Lower Helm



Settee in Pilothouse



Lower Helm



Master Berth



Master 1



Master looking Aft



Master



Aft Master Office and Laundry



Master 2



Master Head



Master Head 2



VIP Bed



VIP to VIP Head



VIP Head



Port Guest



Port Bunks



Port Guest looking Forward



Port Guest Head



Master 2nd Sink and Separate Shower



Lazarette



Generators Aft Engine Room



Generator Stbd Side



Engine Room Looking Forward



Generator Port Side



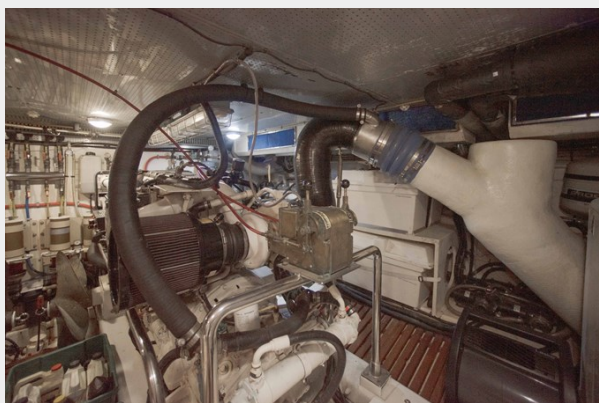
Port Engine



Starboard Engine



Engine Room Starboard Side



Engine Room Port Side



CONTACTS

Andrey Shestakov, leading yacht broker of the sales department of Shestakov Yacht Sales Inc. Shestakov Yacht Sales Inc., the official representative of the Miami/Fort Lauderdale FL headquarters.

Contact details

Email: **andrey@shestakovyachtsales.com**

Web: shestakovyachtsales.com/en/

Telephones

USA: **+1(954)274-4435**

Office hours

Monday – Saturday: **9:00 - 21:00** EDT

Sunday: **closed**

Address



Harbour Towne Marina, 850 NE 3rd St, STE 213, Dania, FL 33004