

## BEACH TO BEACH — MARLOW



**Builder:** MARLOW

**Year Built:** 2008

**Model:** Motor Yacht

**Price:** PRICE ON APPLICATION

**Location:** United States

**LOA:** 82' 10" (25.25m)

**Beam:** 20.33

**Max Draft:** 4' 10" (1.47m)

**Cruise Speed:** 23 Knots Kts. (26 MPH)

**Max Speed:** 27 Knots Kts. (31 MPH)

Our experienced yacht broker, Andrey Shestakov, will help you choose and buy a yacht that best suits your needs **Beach to Beach — MARLOW** from our catalogue. Presently, at Shestakov Yacht Sales Inc., we have a wide variety of yachts available on our sale's list. We also work in close contact with all the big yacht manufacturers from all over the world.

If you would like to buy a yacht **Beach to Beach — MARLOW** or would like help answering any questions concerning purchasing, selling or chartering a yacht, please call **+1(954)274-4435**

# TABLE OF CONTENTS

---

TABLE OF CONTENTS	2
SPECIFICATIONS	5
Overview	5
Basic Information	5
Dimensions	5
Speed, Capacities and Weight	5
Accommodations	5
Hull and Deck Information	6
Engine Information	6
PHOTOS	7
Profile	7
Profile	7
Beach to Beech	7
Beach to Beech	7
Beach to Beech	7
Bow Looking Aft	7
Windlass	8
CB Outside Seating	8
Grill	8
CB Day Head	8
Beach to Beech 12.21-15	8
Command Bridge	8
Helm Station	9
CB Seating	9
Salon Looking Forward	9
Salon Port Side Aft	9
Salon Stbd Side	9
Dining Area	9

Dining Area	10
Salon Bar`	10
Salon Looking Aft	10
Pilothouse Seating	10
Galley 1	10
Galley Looking Aft	10
Galley	11
Master Bed	11
Master Looking Aft Port	11
Master Looking Aft Stbd	11
Master Head 1	11
Starboard Guest Bunks	11
Port Guest Stateroom	12
Stbd Bunks	12
Port Guest Head	12
VIP 1	12
VIP 2	12
VIP Head	12
Galley 2	13
Bttery Chargers	13
Crew Bunk	13
Engine Room Aft Wall	13
Crew Bunk	13
Engine Room 1	13
Crew Head	14
Stbd Engine	14
Port Engine	14
AC Chillers	14
CONTACTS	15

---

Contact details	15
Telephones	15
Office hours	15
Address	15

---

# SPECIFICATIONS

---

## Overview

---

Very well maintained and consistently updated Motoryacht. She had V12 Cat Engines (3412's) and cruises at 20 knots all day or cross oceans at 8 knots like a Trawler. You won't find a better example of this classic Motoryacht. She is owned by a knowledgeable yachtsman that always keeps her in excellent condition cosmetically and mechanically. This vessel shows like a much newer model due to excellent care since new and steady upgrades over the years.

## Basic Information

---

**Category:** Motor Yacht

**Model Year:** 2008

**Year Built:** 2008

**Country:** United States

## Dimensions

---

**LOA:** 82' 10" (25.25mm)

**LWL:** 71' 7" (21.82mm)

**Beam:** 20.33

**Max Draft:** 4' 10" (1.47mm)

## Speed, Capacities and Weight

---

**Cruise Speed:** 23 Knots Kts. (26 MPH)

**Max Speed:** 27 Knots Kts. (31 MPH)

**Gross Tonnage:** 100000 Pounds

**Water Capacity:** 464 Gallons

**Holding Tank:** 355 Gal Gallons

**Fuel Capacity:** 3500 Gal Gallons

## Accommodations

---

**Total Cabins:** 5

---

## Hull and Deck Information

---

**Hull Material:** Carbon Composite

## Engine Information

---

**Engines:** 2

**Manufacturer:** Caterpillar

**Fuel Type:** Diesel

# PHOTOS

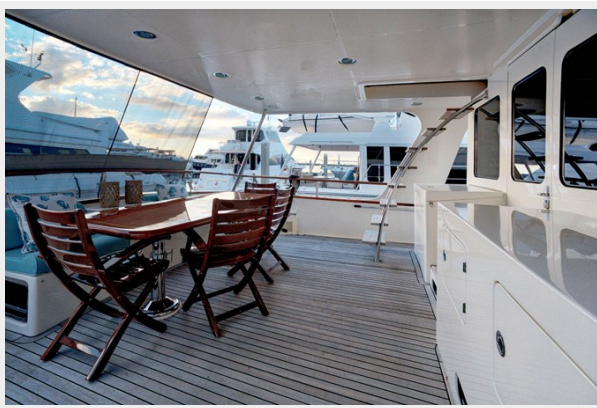
**Profile**



**Profile**



**Beach to Beach**



**Beach to Beach**



**Beach to Beach**



**Bow Looking Aft**



**Windlass**



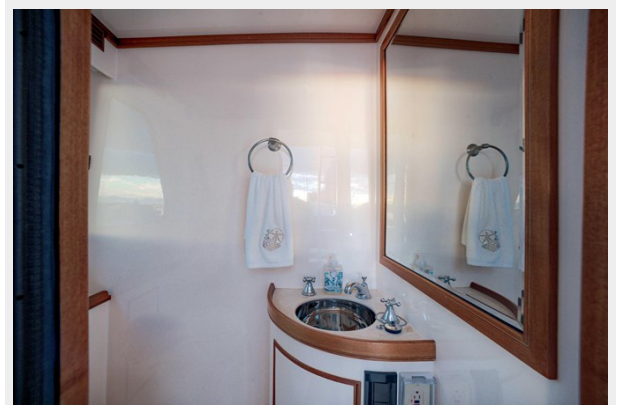
**CB Outside Seating**



**Grill**



**CB Day Head**



**Beach to Beech 12.21-15**



**Command Bridge**





**Helm Station**



**CB Seating**



**Salon Looking Forward**



**Salon Port Side Aft**



**Salon Stbd Side**



**Dining Area**



**Dining Area**



**Salon Bar`**



**Salon Looking Aft**



**Pilothouse Seating**



**Galley 1**



**Galley Looking Aft**



**Galley**



**Master Bed**



**Master Looking Aft Port**



**Master Looking Aft Stbd**



**Master Head 1**



**Starboard Guest Bunks**



**Port Guest Stateroom**



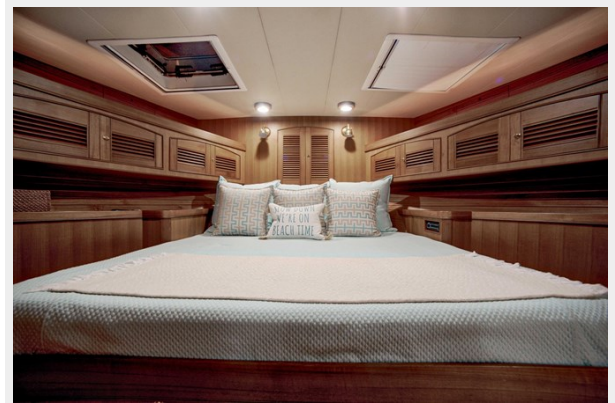
**Stbd Bunks**



**Port Guest Head**



**VIP 1**



**VIP 2**



**VIP Head**



**Galley 2**



**Bttery Chargers**



**Crew Bunk**



**Engine Room Aft Wall**



**Crew Bunk**



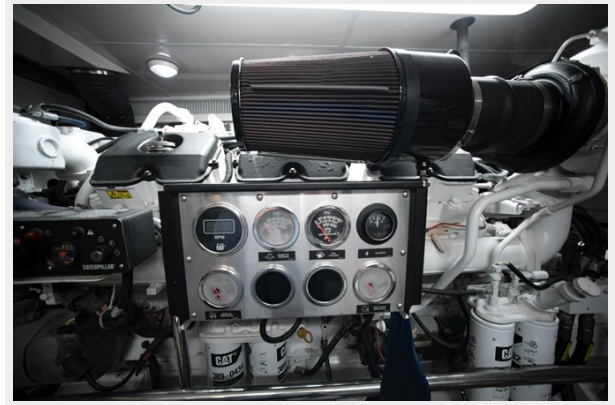
**Engine Room 1**



**Crew Head**



**Stbd Engine**



**Port Engine**



**AC Chillers**



# CONTACTS

---

Andrey Shestakov, leading yacht broker of the sales department of Shestakov Yacht Sales Inc. Shestakov Yacht Sales Inc., the official representative of the Miami/Fort Lauderdale FL headquarters.

## Contact details

---

Email: [andrey@shestakovyachtsales.com](mailto:andrey@shestakovyachtsales.com)

Web: [shestakovyachtsales.com/en/](http://shestakovyachtsales.com/en/)

## Telephones

---

USA: +1(954)274-4435

## Office hours

---

Monday – Saturday: **9:00 - 21:00** EDT

Sunday: **closed**

## Address

---



Harbour Towne Marina, 850 NE 3rd St,  
STE 213, Dania, FL 33004