

## BELLA LUNA — MAINSHIP



**Builder:** MAINSHIP

**Year Built:** 2002

**Model:** Trawler Yacht

**Price:** PRICE ON APPLICATION

**Location:** United States

**LOA:** 43' (13.11mm)

**Beam:** 15.5

**Max Draft:** 3' 8" (1.12mm)

Our experienced yacht broker, Andrey Shestakov, will help you choose and buy a yacht that best suits your needs **Bella Luna — MAINSHIP** from our catalogue. Presently, at Shestakov Yacht Sales Inc., we have a wide variety of yachts available on our sale's list. We also work in close contact with all the big yacht manufacturers from all over the world.

If you would like to buy a yacht **Bella Luna — MAINSHIP** or would like help answering any questions concerning purchasing, selling or chartering a yacht, please call **+1(954)274-4435**

# TABLE OF CONTENTS

TABLE OF CONTENTS	2
SPECIFICATIONS	4
Overview	4
Basic Information	4
Dimensions	4
Speed, Capacities and Weight	4
Accommodations	4
Hull and Deck Information	5
Engine Information	5
PHOTOS	6
8181751_20220119070645852_1_XLARGE	6
8181751_20220119064523283_1_XLARGE	6
8181751_20220119064440015_1_XLARGE	6
8181751_20220119064543638_1_XLARGE	6
8181751_20220119064340337_1_XLARGE	7
8181751_20220119064602322_1_XLARGE	7
8181751_20220119064624109_1_XLARGE	7
8181751_20220119064225544_1_XLARGE	7
8181751_20220119063515437_1_XLARGE	7
8181751_20220119063943259_1_XLARGE	7
8181751_20220119064201869_1_XLARGE	8
8181751_20220119064037493_1_XLARGE	8
8181751_20220119064105938_1_XLARGE	8
8181751_20220119064131902_1_XLARGE	8
8181751_20220119064011306_1_XLARGE	8
8181751_20220119064254754_1_XLARGE	8
8181751_20220119064703773_1_XLARGE	9
8181751_20220119064741607_1_XLARGE	9

---

8181751_20220119064729124_1_XLARGE	9
8181751_20220119064723750_1_XLARGE	9
8181751_20220119064735510_1_XLARGE	9
8181751_20220119064747026_1_XLARGE	9
8181751_20220119064755822_1_XLARGE	10
8181751_20220119064658165_1_XLARGE	10
8181751_20220119064642519_1_XLARGE	10
8181751_20220119064812128_1_XLARGE	10
8181751_20220119064830009_1_XLARGE	11
8181751_20220119064818990_1_XLARGE	11
8181751_20220119064804948_1_XLARGE	11
8181751_20220119064709857_1_XLARGE	11
8181751_20220119064844458_1_XLARGE	12
8181751_20220119064916645_1_XLARGE	12
8181751_20220119064850847_1_XLARGE	12
8181751_20220119064904169_1_XLARGE	12
8181751_20220119064910257_1_XLARGE	12
8181751_20220119064857138_1_XLARGE	12
8181751_20220119063241796_1_XLARGE	13
CONTACTS	14
Contact details	14
Telephones	14
Office hours	14
Address	14

---

---

# SPECIFICATIONS

---

## Overview

---

Two Stateroom Layout

Only 2002 430 Mainship Aft Cabin Trawler on the Current Market and The Most Sought after Two Cabin Layout, Twin Caterpillar Diesels, Generator, Raymarine GPS/Chart/Radar, Tri-Zone Air Conditioning, Full Flybridge Enclosure, Bimini on Aft Sudeck, Will Not Last.

**Call For Appointment**

## Basic Information

---

**Category:** Trawler Yacht

**Sub Category:** Aft Cabin

**Model Year:** 2002

**Year Built:** 2002

**Country:** United States

## Dimensions

---

**LOA:** 43' (13.11mm)

**Beam:** 15.5

**Max Draft:** 3' 8" (1.12mm)

## Speed, Capacities and Weight

---

**Water Capacity:** 250 Gallons

**Holding Tank:** 50 Gal Gallons

**Fuel Capacity:** 500 Gal Gallons

## Accommodations

---

**Total Cabins:** 2

---

## Hull and Deck Information

---

**Hull Material:** Fiberglass

---

## Engine Information

---

**Engines:** 2

**Manufacturer:** Caterpillar

**Engine Type:** Inboard

**Fuel Type:** Diesel

# PHOTOS

8181751\_20220119070645852\_1\_XLARGE



8181751\_20220119064523283\_1\_XLARGE



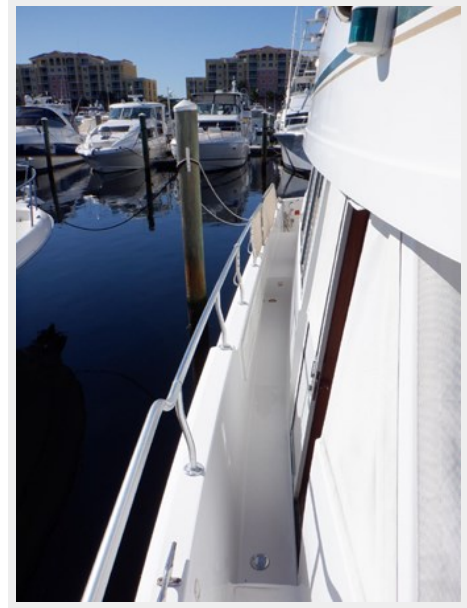
8181751\_20220119064440015\_1\_XLARGE



8181751\_20220119064543638\_1\_XLARGE



8181751\_20220119064340337\_1\_XLARGE



8181751\_20220119064602322\_1\_XLARGE



8181751\_20220119064624109\_1\_XLARGE



8181751\_20220119064225544\_1\_XLARGE



8181751\_20220119063515437\_1\_XLARGE



8181751\_20220119063943259\_1\_XLARGE



8181751\_20220119064201869\_1\_XLARGE



8181751\_20220119064037493\_1\_XLARGE



8181751\_20220119064105938\_1\_XLARGE



8181751\_20220119064131902\_1\_XLARGE



8181751\_20220119064011306\_1\_XLARGE



8181751\_20220119064254754\_1\_XLARGE





8181751\_20220119064703773\_1\_XLARGE



8181751\_20220119064741607\_1\_XLARGE



8181751\_20220119064729124\_1\_XLARGE



8181751\_20220119064723750\_1\_XLARGE



8181751\_20220119064735510\_1\_XLARGE



8181751\_20220119064747026\_1\_XLARGE



8181751\_20220119064755822\_1\_XLARGE



8181751\_20220119064658165\_1\_XLARGE



8181751\_20220119064642519\_1\_XLARGE



8181751\_20220119064812128\_1\_XLARGE



8181751\_20220119064830009\_1\_XLARGE

8181751\_20220119064818990\_1\_XLARGE



8181751\_20220119064804948\_1\_XLARGE



8181751\_20220119064709857\_1\_XLARGE



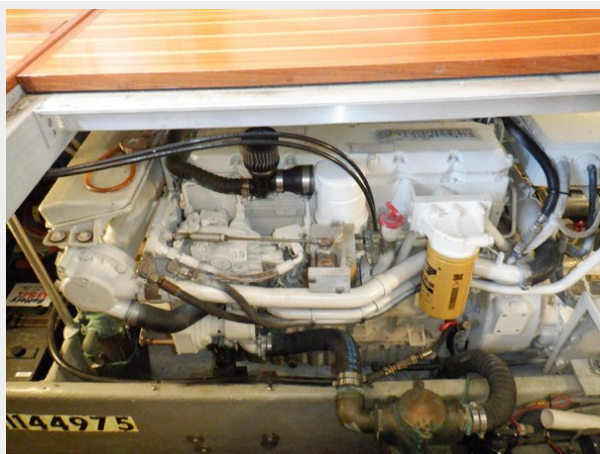
8181751\_20220119064844458\_1\_XLARGE



8181751\_20220119064916645\_1\_XLARGE



8181751\_20220119064850847\_1\_XLARGE



8181751\_20220119064904169\_1\_XLARGE



8181751\_20220119064910257\_1\_XLARGE



8181751\_20220119064857138\_1\_XLARGE



8181751\_20220119063241796\_1\_XLARGE



# CONTACTS

---

Andrey Shestakov, leading yacht broker of the sales department of Shestakov Yacht Sales Inc. Shestakov Yacht Sales Inc., the official representative of the Miami/Fort Lauderdale FL headquarters.

## Contact details

---

Email: [andrey@shestakovyachtsales.com](mailto:andrey@shestakovyachtsales.com)

Web: [shestakovyachtsales.com/en/](http://shestakovyachtsales.com/en/)

## Telephones

---

USA: +1(954)274-4435

## Office hours

---

Monday – Saturday: **9:00 - 21:00** EDT

Sunday: **closed**

## Address

---



Harbour Towne Marina, 850 NE 3rd St,  
STE 213, Dania, FL 33004