

PRINCESS OF TIDES — SUNDOWNER



Builder: SUNDOWNER

Year Built: 1984

Model: Trawler Yacht

Price: PRICE ON APPLICATION

Location: United States

LOA: 30' (9.14mm)

Beam: 11.33

Max Draft: 2' 10" (0.86mm)

Cruise Speed: 6 Knots Kts. (7 MPH)

Max Speed: 7 Knots Kts. (8 MPH)

Our experienced yacht broker, Andrey Shestakov, will help you choose and buy a yacht that best suits your needs **Princess of Tides — SUNDOWNER** from our catalogue. Presently, at Shestakov Yacht Sales Inc., we have a wide variety of yachts available on our sale's list. We also work in close contact with all the big yacht manufacturers from all over the world.

If you would like to buy a yacht **Princess of Tides — SUNDOWNER** or would like help answering any questions concerning purchasing, selling or chartering a yacht, please call **+1(954)274-4435**

TABLE OF CONTENTS

TABLE OF CONTENTS	2
SPECIFICATIONS	4
Overview	4
Basic Information	4
Dimensions	4
Speed, Capacities and Weight	4
Accommodations	4
Hull and Deck Information	5
Engine Information	5
PHOTOS	6
1 Hobo 1984 Sundowner Tug Starboard Forward View	6
2 Hobo 1984 Sundowner Tug forward view	6
3 Hobo 1984 Sundowner Tug Port Fwd View	6
4 Hobo 1984 Sundowner Tug Port View 2	6
5 Hobo 1984 Sundowner Tug Aft View	6
6 Hobo 1984 Sundowner Tug Port View	6
7.1 Hobo 1984 Sundowner Tug Starboard View	7
7 Hobo 1984 Sundowner Tug Port Aft View	7
7.2 Hobo 1984 Sundowner Tug Starboard View	7
8 Hobo 1984 Sundowner Tug aft deck entry	7
16 Hobo 1984 Sundowner Tug Pilothouse Helm	7
11 Hobo 1984 Sundowner Tug Galley 3	7
17 Hobo 1984 Sundowner Tug Pilothouse Helm 2	8
18 Hobo 1984 Sundowner Tug Gauges	8
19 Hobo 1984 Sundowner Tug Electronics	8
20 Hobo 1984 Sundowner Tug Head	8
21 Hobo 1984 Sundowner Tug cabin	8
22 Hobo 1984 Sundowner Tug V berth 1	8

23 Hobo 1984 Sundowner Tug V berth 2	9
24 Hobo 1984 Sundowner Tug Thermostat	9
25 Hobo 1984 Sundowner Tug Electrical Panel	9
26 Hobo 1984 Sundowner Tug Generator	9
27 Hobo 1984 Sundowner Tug Engine	9
28 Hobo 1984 Sundowner Tug Engine 2	9
29 Hobo 1984 Sundowner Tug Engine 3	10
30 Hobo 1984 Sundowner Tug Engine Hour Meter	10
1984 Sundowner Tug 30 cockpit and generator access	10
1984 Sundowner Tug 30 chart plotter	10
1984 Sundowner Tug 30 engine hours	11
1984 Sundowner Tug 30 galley salon	11
1984 Sundowner Tug 30 generator panel	11
1984 Sundowner Tug 30 helm	11
1984 Sundowner Tug 30 pilothouse	12
1984 Sundowner Tug 30 insignia	12
1984 Sundowner Tug 30 rigid dinghy 1	12
1984 Sundowner Tug 30 rigid dinghy 2	12
1984 Sundowner Tug 30 Side door	13
1984 Sundowner Tug 30 Stb view	13
1984 Sundowner Tug 30 teak foredeck	13
1984 Sundowner Tug 30 vhf	13
1984 Sundowner Tug 30	14
CONTACTS	15
Contact details	15
Telephones	15
Office hours	15
Address	15

SPECIFICATIONS

Overview

A veteran looper ideal for 2 people. Small enough to handle and large enough to live on comfortably. Last owner took her almost 6000 miles and hated to see her go. She has great character and turns heads everywhere she goes. With her single Perkins engine she is not only a head turner but an economical option as well.

Basic Information

Category: Trawler Yacht

Model Year: 1984

Year Built: 1984

Country: United States

Dimensions

LOA: 30' (9.14mm)

Beam: 11.33

Max Draft: 2' 10" (0.86mm)

Speed, Capacities and Weight

Cruise Speed: 6 Knots Kts. (7 MPH)

Max Speed: 7 Knots Kts. (8 MPH)

Water Capacity: 60 Gallons

Holding Tank: 30 Gal Gallons

Fuel Capacity: 50 Gal Gallons

Accommodations

Total Cabins: 1

Total Berths: 2

Total Heads: 1

Hull and Deck Information

Hull Material: Fiberglass

Engine Information

Engines: 1

Manufacturer: Perkins

Engine Type: Inboard

Fuel Type: Diesel

PHOTOS

1 Hobo 1984 Sundowner Tug Starboard Forward View



2 Hobo 1984 Sundowner Tug forward view



3 Hobo 1984 Sundowner Tug Port Fwd View



4 Hobo 1984 Sundowner Tug Port View 2



5 Hobo 1984 Sundowner Tug Aft View



6 Hobo 1984 Sundowner Tug Port View



7 Hobo 1984 Sundowner Tug Port Aft View



7.1 Hobo 1984 Sundowner Tug Starboard View



7.2 Hobo 1984 Sundowner Tug Starboard View



8 Hobo 1984 Sundowner Tug aft deck entry



11 Hobo 1984 Sundowner Tug Galley 3



16 Hobo 1984 Sundowner Tug Pilothouse Helm



17 Hobo 1984 Sundowner Tug Pilothouse Helm 2



18 Hobo 1984 Sundowner Tug Gauges



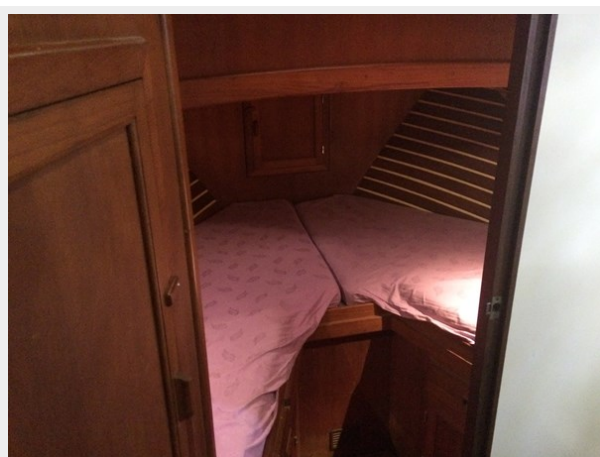
19 Hobo 1984 Sundowner Tug Electronics



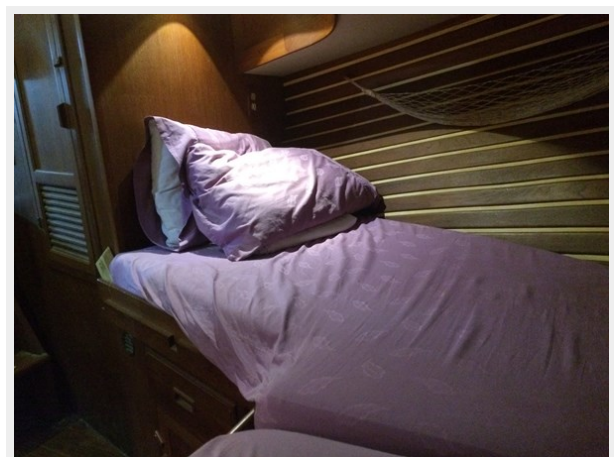
20 Hobo 1984 Sundowner Tug Head



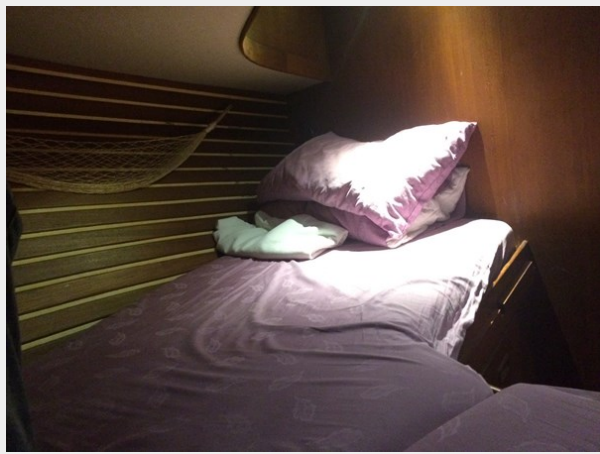
21 Hobo 1984 Sundowner Tug cabin



22 Hobo 1984 Sundowner Tug V berth 1



23 Hobo 1984 Sundowner Tug V berth 2



24 Hobo 1984 Sundowner Tug Thermostat



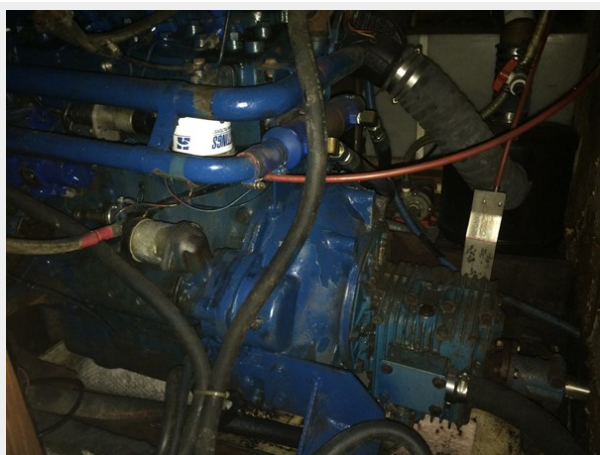
25 Hobo 1984 Sundowner Tug Electrical Panel



26 Hobo 1984 Sundowner Tug Generator



27 Hobo 1984 Sundowner Tug Engine



28 Hobo 1984 Sundowner Tug Engine 2



29 Hobo 1984 Sundowner Tug Engine 3



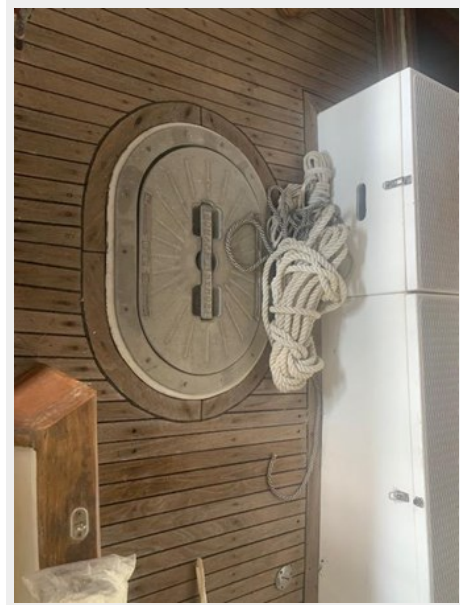
30 Hobo 1984 Sundowner Tug Engine Hour Meter



1984 Sundowner Tug 30 chart plotter



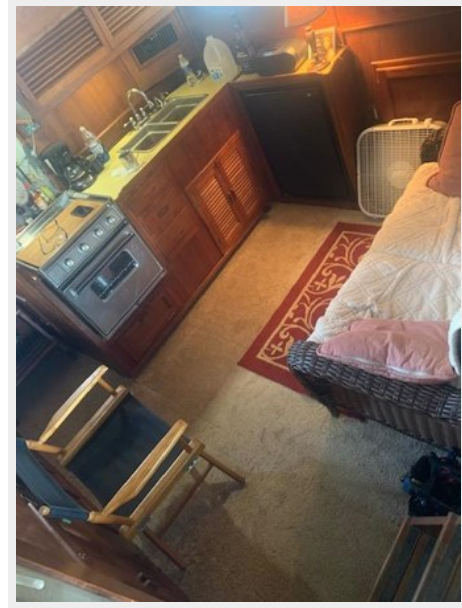
1984 Sundowner Tug 30 cockpit and generator access



1984 Sundowner Tug 30 engine hours



1984 Sundowner Tug 30 galley salon



1984 Sundowner Tug 30 generator panel



1984 Sundowner Tug 30 helm



1984 Sundowner Tug 30 pilothouse

1984 Sundowner Tug 30 insignia



1984 Sundowner Tug 30 rigid dinghy 1



1984 Sundowner Tug 30 rigid dinghy 2



1984 Sundowner Tug 30 Side door



1984 Sundowner Tug 30 Stb view



1984 Sundowner Tug 30 teak foredeck



1984 Sundowner Tug 30 vhf



1984 Sundowner Tug 30



CONTACTS

Andrey Shestakov, leading yacht broker of the sales department of Shestakov Yacht Sales Inc. Shestakov Yacht Sales Inc., the official representative of the Miami/Fort Lauderdale FL headquarters.

Contact details

Email: andrey@shestakovyachtsales.com

Web: shestakovyachtsales.com/en/

Telephones

USA: +1(954)274-4435

Office hours

Monday – Saturday: **9:00 - 21:00** EDT

Sunday: **closed**

Address



Harbour Towne Marina, 850 NE 3rd St,
STE 213, Dania, FL 33004