

VALHALLA — SUNREEF



Builder: [SUNREEF](#)

Year Built: 2016

Model: Catamaran

Price: PRICE ON APPLICATION

LOA: 70' (21.34m)

Beam: 30.41

Max Draft: 5' 1" (1.55m)

Cruise Speed: 17.1 Knots Kts. (20 MPH)

Max Speed: 22.2 Knots Kts. (26 MPH)

Our experienced yacht broker, Andrey Shestakov, will help you choose and buy a yacht that best suits your needs **VALHALLA — SUNREEF** from our catalogue. Presently, at Shestakov Yacht Sales Inc., we have a wide variety of yachts available on our sale's list. We also work in close contact with all the big yacht manufacturers from all over the world.

If you would like to buy a yacht **VALHALLA — SUNREEF** or would like help answering any questions concerning purchasing, selling or chartering a yacht, please call **+1(954)274-4435**

TABLE OF CONTENTS

TABLE OF CONTENTS	2
SPECIFICATIONS	4
Overview	4
Basic Information	4
Dimensions	4
Speed, Capacities and Weight	5
Accommodations	5
Hull and Deck Information	5
Engine Information	5
PHOTOS	6
val10	7
val13	7
val14	8
val17	8
val18	8
val40	12
val42	12
val43	12
val44	13
val45	13
val46	13
val47	13
val48	13
val49	13
val50	14
val51	14
val52	14
val53	14

val54	14
val55	14
val57	15
val56	15
val58	15
CONTACTS	16
Contact details	16
Telephones	16
Office hours	16
Address	16

SPECIFICATIONS

Overview

Valhalla is a 78ft (LOA) Power Catamaran Built-in 2016 by Sunreef Yachts. She has Bright and Modern Interior. Valhalla can host up to eleven overnight guests in her 5 Staterooms with a crew of 3. This Luxury Power Cat has tons of natural light and space perfect for relaxing and entertaining.

Valhalla has been a profitable charter in the Caribbeans, always taken care of by a full-time crew.

Her main salon has high ceilings, an L-shaped Sofa, an ottoman, and a coffee table. The galley also features an L-shaped Sofa, stools, and table perfect for every meal. Her cockpit has a large alfresco dining area with an extended hydraulic swim platform that can be used for lounging when it is not down in the water.

She has tons of Sunpads perfect for laying out and enjoying the view in the foredeck. The spacious flybridge also includes a lounge and an aft deck.

US Import Duty Not Paid. Not for Sale to US Residents, while in US Waters, Except while in Lauderdale Marine Free Trade Zone.”

Basic Information

Category: Catamaran

Model Year: 2016

Year Built: 2016

Dimensions

LOA: 70' (21.34mm)

Beam: 30.41

Max Draft: 5' 1" (1.55mm)

Speed, Capacities and Weight

Cruise Speed: 17.1 Knots Kts. (20 MPH) **Max Speed:** 22.2 Knots Kts. (26 MPH)

Water Capacity: 325 Gallons

Holding Tank: 211 Gal Gallons

Fuel Capacity: 4000 Gal Gallons

Accommodations

Total Cabins: 5

Total Heads: 7

Hull and Deck Information

Hull Material: Fiberglass

Engine Information

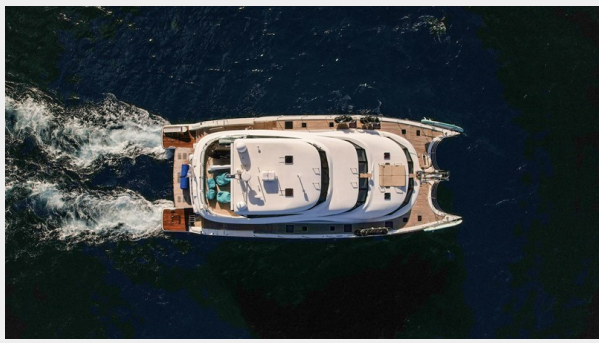
Engines: 2

Manufacturer: Volvo

Engine Type: Inboard

Fuel Type: Diesel

PHOTOS





val10



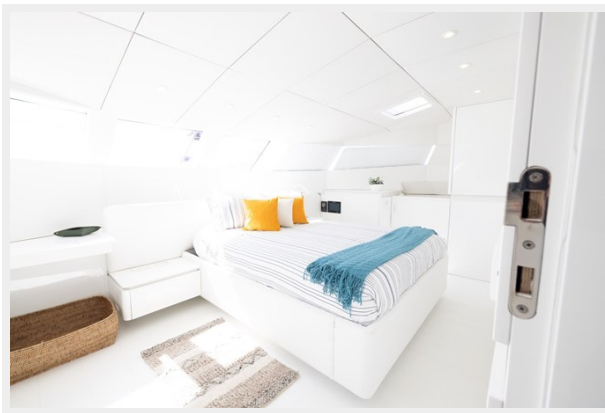
val13



val14

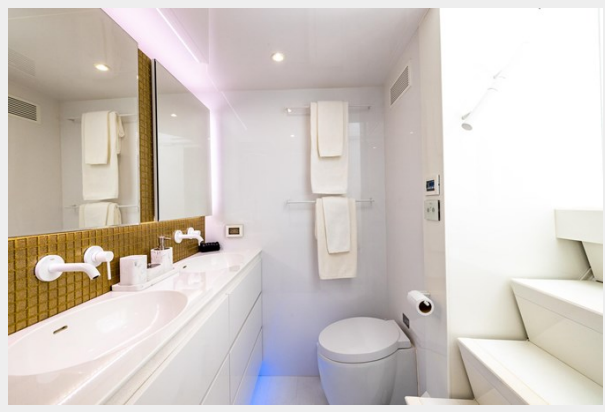


val17



val18











val40



val42

val43



val44



val45



val46



val47



val48



val49



val50



val51



val52



val53



val54



val55



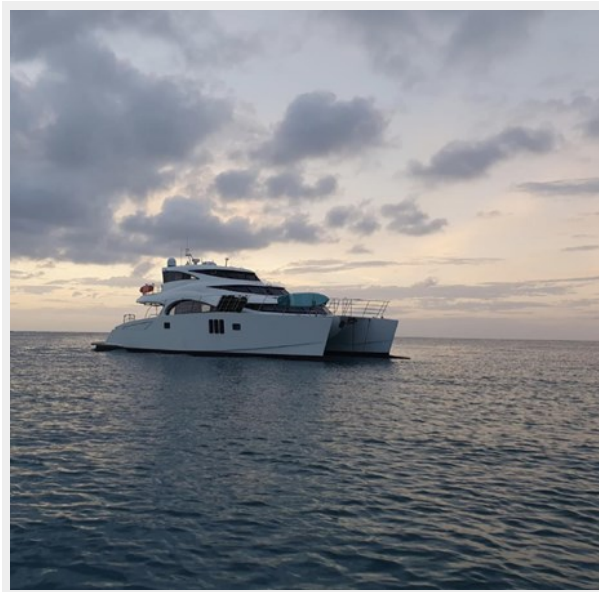
val56



val57



val58



CONTACTS

Andrey Shestakov, leading yacht broker of the sales department of Shestakov Yacht Sales Inc. Shestakov Yacht Sales Inc., the official representative of the Miami/Fort Lauderdale FL headquarters.

Contact details

Email: andrey@shestakovyachtsales.com

Web: shestakovyachtsales.com/en/

Telephones

USA: +1(954)274-4435

Office hours

Monday – Saturday: **9:00 - 21:00** EDT

Sunday: **closed**

Address



Harbour Towne Marina, 850 NE 3rd St,
STE 213, Dania, FL 33004