

FORTIS — BENETTI



Builder: BENETTI

Year Built: 2003

Model: Motor Yacht

Price: PRICE ON APPLICATION

Location: United States

LOA: 115' (35.05mm)

Beam: 24.66

Max Draft: 6' 6" (1.98mm)

Cruise Speed: 11 Knots Kts. (13 MPH)

Max Speed: 18 Knots Kts. (21 MPH)

Our experienced yacht broker, Andrey Shestakov, will help you choose and buy a yacht that best suits your needs **Fortis — BENETTI** from our catalogue. Presently, at Shestakov Yacht Sales Inc., we have a wide variety of yachts available on our sale's list. We also work in close contact with all the big yacht manufacturers from all over the world.

If you would like to buy a yacht **Fortis — BENETTI** or would like help answering any questions concerning purchasing, selling or chartering a yacht, please call **+1(954)274-4435**

TABLE OF CONTENTS

TABLE OF CONTENTS	2
SPECIFICATIONS	3
Overview	3
Basic Information	3
Dimensions	4
Speed, Capacities and Weight	4
Accommodations	4
Hull and Deck Information	4
Engine Information	4
PHOTOS	5
CONTACTS	19
Contact details	19
Telephones	19
Office hours	19
Address	19

SPECIFICATIONS

Overview

The classic wooden panelled interior that we have come to love from the Benetti ship yard covers the interior of GITANA; from the sky lounge on deck 3, throughout the main deck and Master stateroom, and decorating the accommodation deck.

The Master stateroom enjoys a full beam position, forward on the main deck. Offering exceptional sea scapes and cruising comfort. A large ensuite bathroom services all needs with an adjoining dressing room and walk in wardrobe.

Four guest cabins are on the lower accommodation deck accessed through the main salon stairwell.

Two double VIP cabins laid out at midships with a further two twin bed cabins, provide privacy and comfort for 8 guests. All cabins are ensuite, finished with marble and silk wall panels. Independent audio visual equipment is fitted throughout the yacht.

The Sky lounge is furnished with a gleaming polished wooden floor, green leather Chesterfield sofa, barstools, and office chair. A functional and popular area on board the yacht. Large sliding glass doors open to the aft bridge deck with dining facilities and 3 separate relaxing seating areas.

Up on the sun deck, loungers are arranged aft, alfresco dining area is midship, shade is offered from the radar arch and folding bimini cover. The wet bar is serviced with fridge, ice maker, sink, and grill.

Forward of the bar is the best vantage point for the ultimate 360 degree views when cruising or at anchor.

Basic Information

Category: Motor Yacht

Model Year: 2003

Year Built: 2003

Country: United States

Dimensions

LOA: 115' (35.05mm)

Beam: 24.66

Max Draft: 6' 6" (1.98mm)

Speed, Capacities and Weight

Cruise Speed: 11 Knots Kts. (13 MPH)

Max Speed: 18 Knots Kts. (21 MPH)

Max Speed Range: 3000 Kts.

Gross Tonnage: 247 Pounds

Water Capacity: 6300 Gallons

Fuel Capacity: 38000 Gal Gallons

Accommodations

Total Cabins: 5

Sleeps: 12

Total Heads: 7

Crew Berths: 6

Hull and Deck Information

Hull Material: GRP

Deck Material: Teak over Fiberglass

Hull Configuration: Semi-Displacement

Engine Information

Engines: 2

Manufacturer: MTU

Engine Type: Inboard

Fuel Type: Diesel

PHOTOS



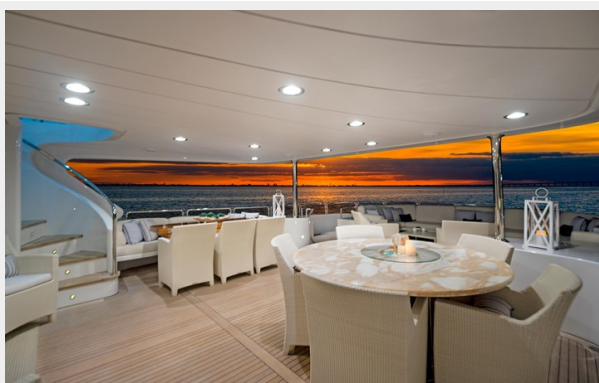


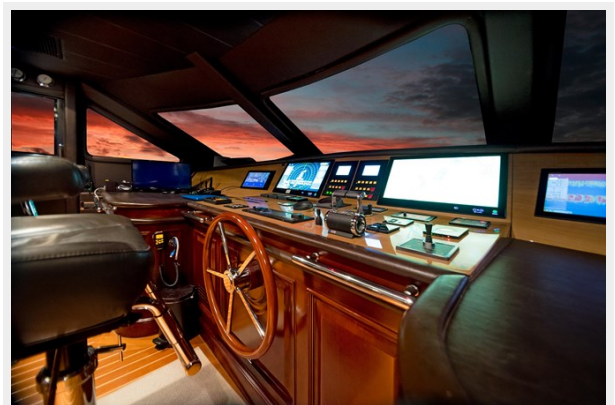
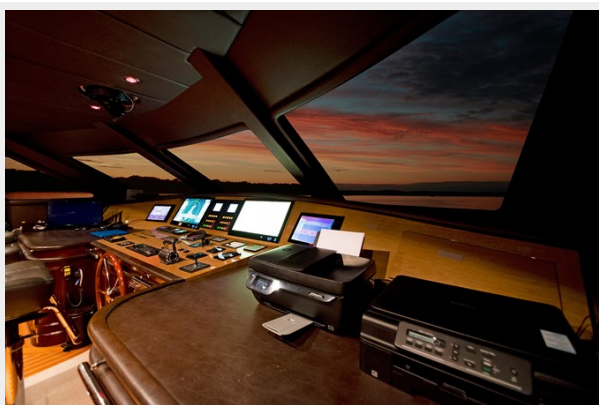


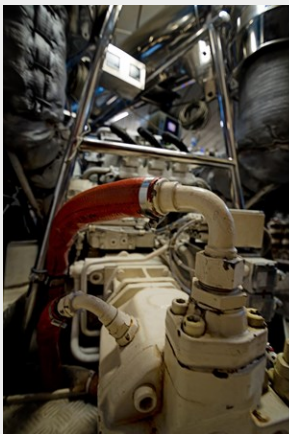
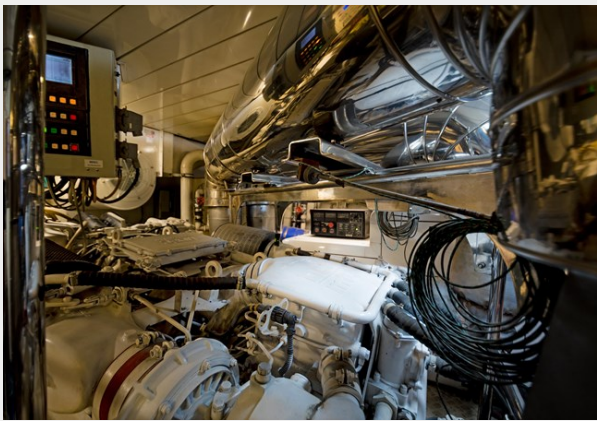
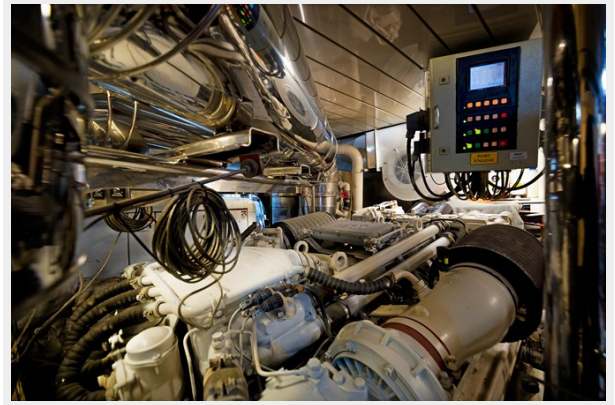


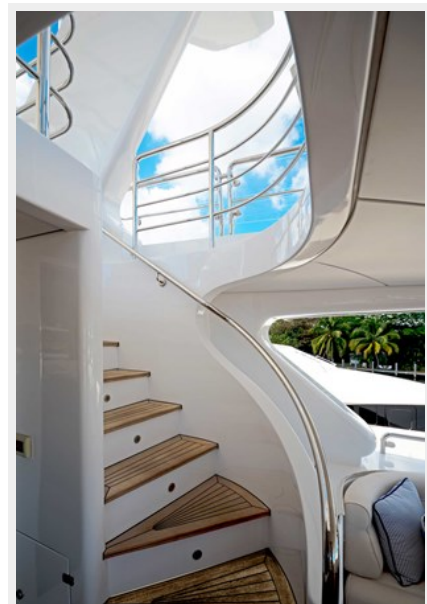




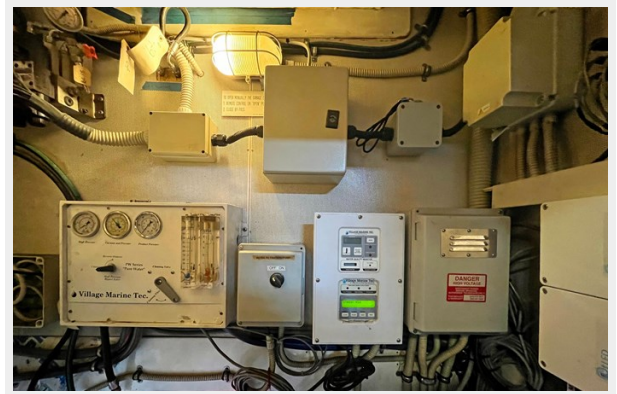
















CONTACTS

Andrey Shestakov, leading yacht broker of the sales department of Shestakov Yacht Sales Inc. Shestakov Yacht Sales Inc., the official representative of the Miami/Fort Lauderdale FL headquarters.

Contact details

Email: andrey@shestakovyachtsales.com

Web: shestakovyachtsales.com/en/

Telephones

USA: +1(954)274-4435

Office hours

Monday – Saturday: **9:00 - 21:00** EDT

Sunday: **closed**

Address



Harbour Towne Marina, 850 NE 3rd St,
STE 213, Dania, FL 33004