

CARRY ON — GOLDEN STAR



Builder: GOLDEN STAR

Year Built: 1988

Model: Trawler Yacht

Price: PRICE ON APPLICATION

Location: United States

LOA: 42' (12.8mm)

Beam: 14.83

Max Draft: 3' 4" (1.02mm)

Cruise Speed: 8 Knots Kts. (9 MPH)

Max Speed: 15 Knots Kts. (17 MPH)

Our experienced yacht broker, Andrey Shestakov, will help you choose and buy a yacht that best suits your needs **Carry On — GOLDEN STAR** from our catalogue. Presently, at Shestakov Yacht Sales Inc., we have a wide variety of yachts available on our sale's list. We also work in close contact with all the big yacht manufacturers from all over the world.

If you would like to buy a yacht **Carry On — GOLDEN STAR** or would like help answering any questions concerning purchasing, selling or chartering a yacht, please call **+1(954)274-4435**

TABLE OF CONTENTS

TABLE OF CONTENTS	2
SPECIFICATIONS	6
Overview	6
Basic Information	6
Dimensions	6
Speed, Capacities and Weight	6
Accommodations	7
Hull and Deck Information	7
Engine Information	7
PHOTOS	8
1_2785889_	8
2_2785889_	8
3_2785889_	8
4_2785889_	8
5_2785889_	8
6_2785889_	8
7_2785889_	9
8_2785889_	9
9_2785889_	9
10_2785889_	9
12_2785889_	9
11_2785889_	9
13_2785889_	10
14_2785889_	10
15_2785889_	10
16_2785889_	10
17_2785889_	10
18_2785889_	10

19_2785889_	11
20_2785889_	11
21_2785889_	11
22_2785889_	11
23_2785889_	11
24_2785889_	11
25_2785889_	12
26_2785889_	12
27_2785889_	12
28_2785889_	12
29_2785889_	12
30_2785889_	12
31_2785889_	13
32_2785889_	13
33_2785889_	13
34_2785889_	13
35_2785889_	13
36_2785889_	13
37_2785889_	14
38_2785889_	14
39_2785889_	14
40_2785889_	14
41_2785889_	14
42_2785889_	14
43_2785889_	15
44_2785889_	15
45_2785889_	15
46_2785889_	15
47_2785889_	15

48_2785889_	15
49_2785889_	16
50_2785889_	16
51_2785889_	16
52_2785889_	16
54_2785889_	16
53_2785889_	16
55_2785889_	17
56_2785889_	17
57_2785889_	17
58_2785889_	17
59_2785889_	17
60_2785889_	17
61_2785889_	18
62_2785889_	18
63_2785889_	18
64_2785889_	18
65_2785889_	18
66_2785889_	18
67_2785889_	19
68_2785889_	19
69_2785889_	19
70_2785889_	19
71_2785889_	19
72_2785889_	19
73_2785889_	20
74_2785889_	20
75_2785889_	20
76_2785889_	20

77_2785889_	20
78_2785889_	20
79_2785889_	21
80_2785889_	21
81_2785889_	21
82_2785889_	21
83_2785889_	21
84_2785889_	21
85_2785889_	22
86_2785889_	22
87_2785889_	22
88_2785889_	22
89_2785889_	22
90_2785889_	22
CONTACTS	23
Contact details	23
Telephones	23
Office hours	23
Address	23

SPECIFICATIONS

Overview

Carry On, is a beautiful well maintained spacious Fast Trawler with a Sundeck... The details inside and outside make her a dream to navigate and enjoy. Two staterooms and ensuite heads. L-shape sofa and breakfast bar make for an inviting Salon. Upper and Lower helm gives your Captain options.. Spacious Sundeck gives your guest and you more options. Twin diesel Perkin engines. Westerbeke generator. Recent work starting in 2019: Britework & placards, Batteries (5); A/C aft, Fly bridge Isinglass and Canvass, New smart screens, sundeck hot/cold water valves, teak riser repair aft stairs, Engine room detail/paint. 2016 new Port engine gearbox, 2011 new Starboard engine gearbox. She is ready for her next adventure. She is stored on the hard during hurricane season for her safety. She's a Must See....

Basic Information

Category: Trawler Yacht

Model Year: 1988

Year Built: 1988

Country: United States

Dimensions

LOA: 42' (12.8mm)

Beam: 14.83

Max Draft: 3' 4" (1.02mm)

Speed, Capacities and Weight

Cruise Speed: 8 Knots Kts. (9 MPH)

Max Speed: 15 Knots Kts. (17 MPH)

Water Capacity: 250 Gallons

Holding Tank: 50 Gal Gallons

Fuel Capacity: 500 Gal Gallons

Accommodations

Total Cabins: 2

Total Berths: 2

Total Heads: 2

Hull and Deck Information

Hull Material: Fiberglass

Engine Information

Engines: 2

Manufacturer: Perkins

Engine Type: Inboard

Fuel Type: Diesel

PHOTOS

1_2785889_



2_2785889_



3_2785889_



4_2785889_



5_2785889_



6_2785889_



7_2785889_



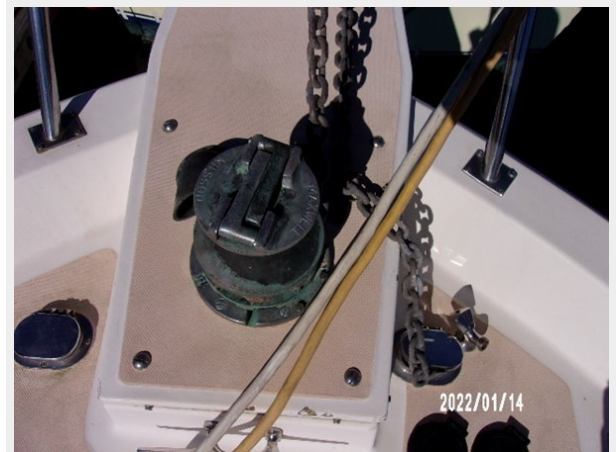
8_2785889_



9_2785889_

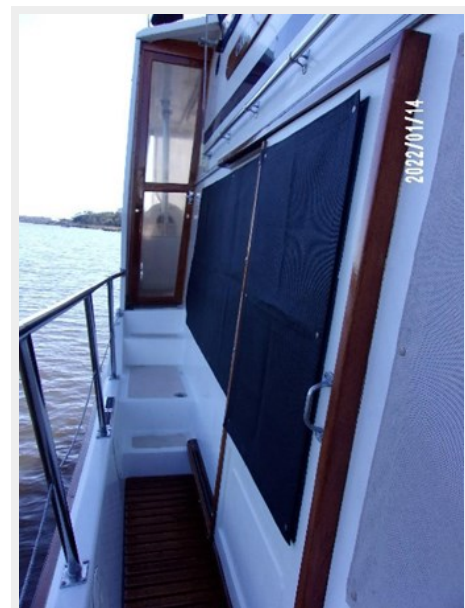


10_2785889_



12_2785889_

11_2785889_



13_2785889_



14_2785889_



15_2785889_



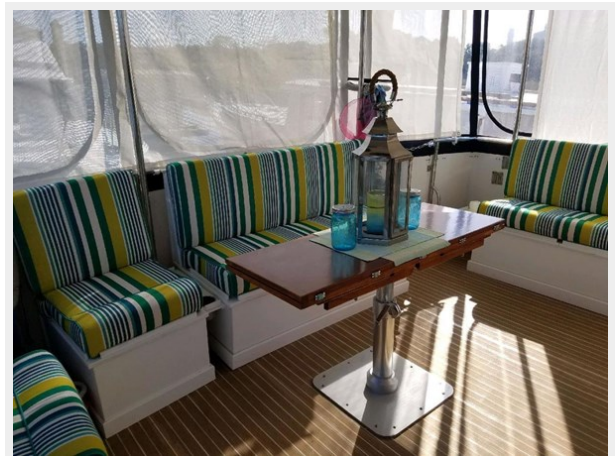
16_2785889_



17_2785889_



18_2785889_



19_2785889_



20_2785889_



21_2785889_



22_2785889_



23_2785889_



24_2785889_



25_2785889_



26_2785889_



27_2785889_



28_2785889_



29_2785889_



30_2785889_



31_2785889_



32_2785889_



33_2785889_



34_2785889_



35_2785889_



36_2785889_



37_2785889_



38_2785889_



39_2785889_



40_2785889_



41_2785889_



42_2785889_



43_2785889_



44_2785889_



45_2785889_



46_2785889_



47_2785889_



48_2785889_



49_2785889_



50_2785889_



51_2785889_



52_2785889_



53_2785889_



54_2785889_



55_2785889_



56_2785889_



57_2785889_



58_2785889_



59_2785889_



60_2785889_



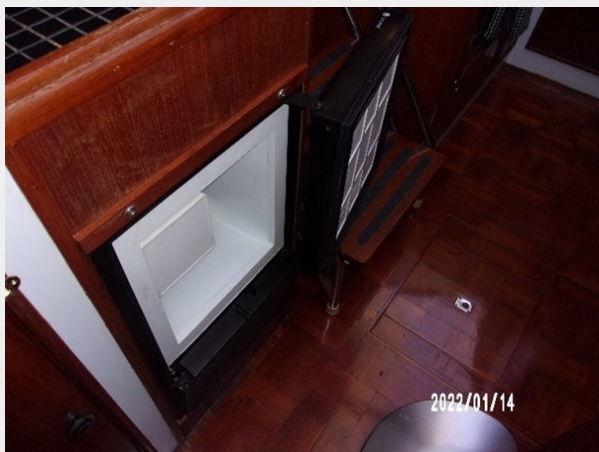
61_2785889_



62_2785889_



63_2785889_



64_2785889_



65_2785889_



66_2785889_



67_2785889_



68_2785889_



69_2785889_



70_2785889_



71_2785889_



72_2785889_



73_2785889_



74_2785889_



75_2785889_



76_2785889_



77_2785889_



78_2785889_



79_2785889_



80_2785889_



81_2785889_



82_2785889_



83_2785889_



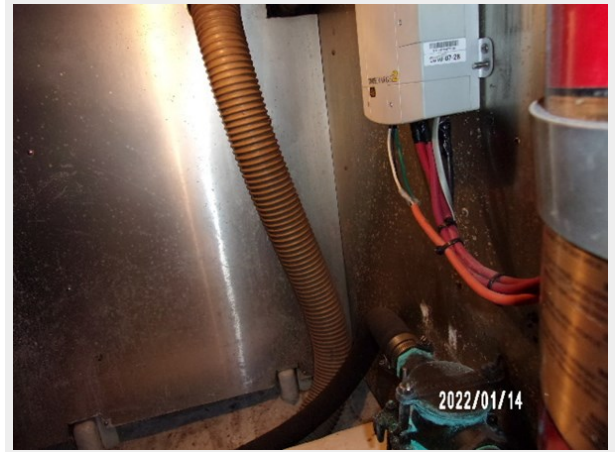
84_2785889_



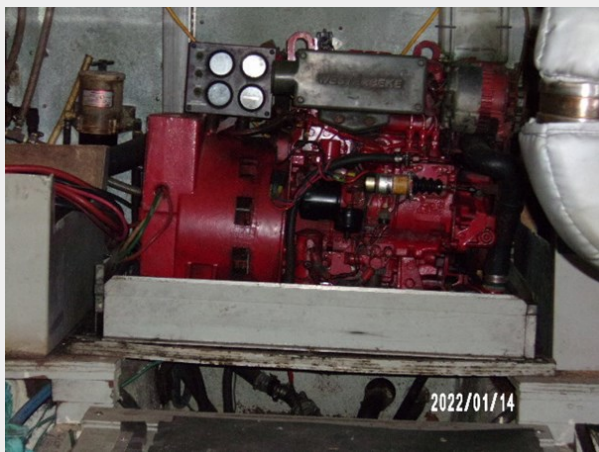
85_2785889_



86_2785889_



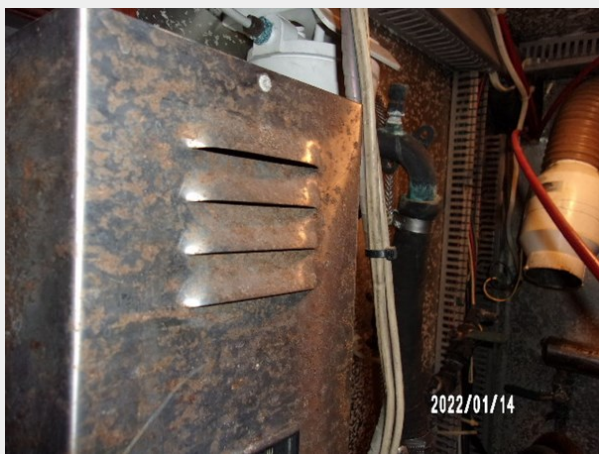
87_2785889_



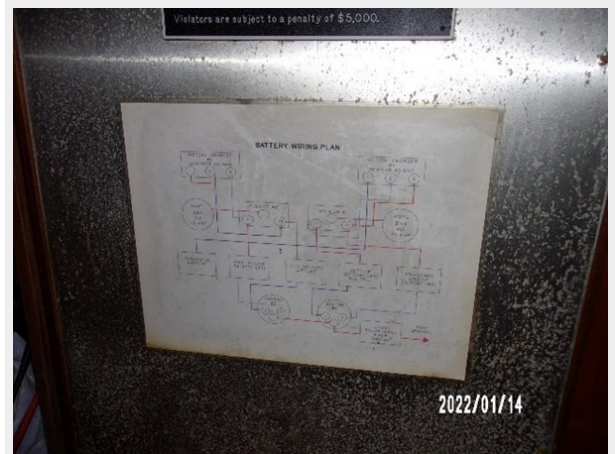
88_2785889_



89_2785889_



90_2785889_



CONTACTS

Andrey Shestakov, leading yacht broker of the sales department of Shestakov Yacht Sales Inc. Shestakov Yacht Sales Inc., the official representative of the Miami/Fort Lauderdale FL headquarters.

Contact details

Email: andrey@shestakovyachtsales.com

Web: shestakovyachtsales.com/en/

Telephones

USA: +1(954)274-4435

Office hours

Monday – Saturday: **9:00 - 21:00** EDT

Sunday: **closed**

Address



Harbour Towne Marina, 850 NE 3rd St,
STE 213, Dania, FL 33004