

PROJECT 105 — BIMINI



Builder: BIMINI

Year Built: 2025

Model: Cruiser

Price: PRICE ON APPLICATION

Location: The Bahamas

LOA: 105' (32mm)

Beam: 36

Min Draft: 2' 7" (0.79mm)

Max Draft: 3' 3" (0.99mm)

Cruise Speed: 20 Knots Kts. (23 MPH)

Max Speed: 25 Knots Kts. (29 MPH)

Our experienced yacht broker, Andrey Shestakov, will help you choose and buy a yacht that best suits your needs **Project 105 — BIMINI** from our catalogue. Presently, at Shestakov Yacht Sales Inc., we have a wide variety of yachts available on our sale's list. We also work in close contact with all the big yacht manufacturers from all over the world.

If you would like to buy a yacht **Project 105 — BIMINI** or would like help answering any questions concerning purchasing, selling or chartering a yacht, please call **+1(954)274-4435**

TABLE OF CONTENTS

TABLE OF CONTENTS	2
SPECIFICATIONS	3
Overview	3
Basic Information	3
Dimensions	3
Speed, Capacities and Weight	3
Accommodations	3
Hull and Deck Information	4
Engine Information	4
PHOTOS	5
CONTACTS	6
Contact details	6
Telephones	6
Office hours	6
Address	6

SPECIFICATIONS

Overview

Our 105 Power Catamaran offers a fusion of elegance, functionality and space to match your own individual tastes and specifications. Just as you are a unique individual with specific needs and desires.

Our 105 is essentially a global cruising platform that can be built and furnished to match your every desire. With unique configuration, equipment, furnishings and facilities that reflect your own specific needs, your new global cruising catamaran becomes a true reflection of your success, taste and high standards.

Basic Information

Category: Cruiser

Sub Category: Cruiser

Model Year: 2025

Year Built: 2025

Country: The Bahamas

Dimensions

LOA: 105' (32mm)

LWL: 89' (27.13mm)

Beam: 36

Min Draft: 2' 7" (0.79mm)

Max Draft: 3' 3" (0.99mm)

Speed, Capacities and Weight

Cruise Speed: 20 Knots Kts. (23 MPH)

Max Speed: 25 Knots Kts. (29 MPH)

Water Capacity: 2100 Gallons

Fuel Capacity: 5250 Gal Gallons

Accommodations

Total Cabins: 5

Hull and Deck Information

Hull Material: Fiberglass

Deck Material: Wood

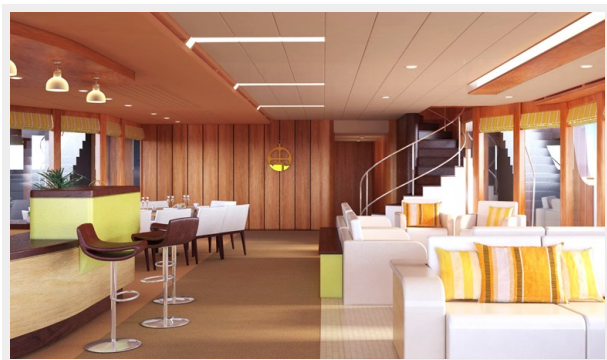
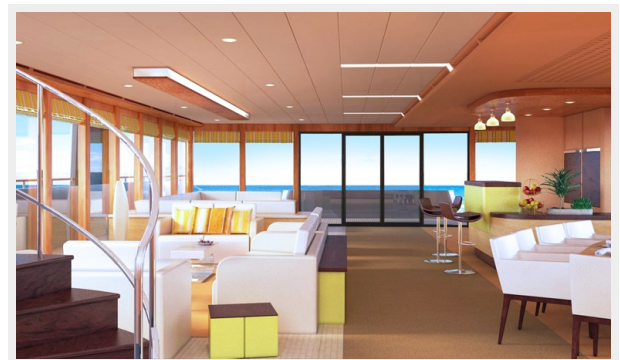
Hull Configuration: Catamaran

Engine Information

Engines: 1

Manufacturer: MTU

PHOTOS



CONTACTS

Andrey Shestakov, leading yacht broker of the sales department of Shestakov Yacht Sales Inc. Shestakov Yacht Sales Inc., the official representative of the Miami/Fort Lauderdale FL headquarters.

Contact details

Email: andrey@shestakovyachtsales.com

Web: shestakovyachtsales.com/en/

Telephones

USA: +1(954)274-4435

Office hours

Monday – Saturday: **9:00 - 21:00** EDT

Sunday: **closed**

Address



Harbour Towne Marina, 850 NE 3rd St,
STE 213, Dania, FL 33004