

ENTERPRISE — SUNSEEKER



Builder: SUNSEEKER

Year Built: 2017

Model: Motor Yacht

Price: PRICE ON APPLICATION

Location: United States

LOA: 86' (26.21mm)

Beam: 21.25

Max Draft: 6' 5" (1.96mm)

Cruise Speed: 24 Knots Kts. (28 MPH)

Max Speed: 30 Knots Kts. (35 MPH)

Our experienced yacht broker, Andrey Shestakov, will help you choose and buy a yacht that best suits your needs **Enterprise — SUNSEEKER** from our catalogue. Presently, at Shestakov Yacht Sales Inc., we have a wide variety of yachts available on our sale's list. We also work in close contact with all the big yacht manufacturers from all over the world.

If you would like to buy a yacht **Enterprise — SUNSEEKER** or would like help answering any questions concerning purchasing, selling or chartering a yacht, please call **+1(954)274-4435**

TABLE OF CONTENTS

TABLE OF CONTENTS	2
SPECIFICATIONS	3
Overview	3
Basic Information	3
Dimensions	3
Speed, Capacities and Weight	4
Accommodations	4
Hull and Deck Information	4
Engine Information	4
PHOTOS	5
CONTACTS	14
Contact details	14
Telephones	14
Office hours	14
Address	14

SPECIFICATIONS

Overview

2017 Zodiac Sea Sport 420 w/ Yamaha F60 included

ENTERPRISE was custom ordered from Sunseeker by the current owner. The design brief included the walnut flooring and wenge walls which are usually reserved for the larger Sunseeker yachts. The combination of dark wood paneling and lighter interior provides for a very inviting interior that feels luxurious and relaxing at the same time.

There are numerous seating and layout possibilities on the main deck, all of them centered around an elegant dining table amidships, an attractive and spacious galley on the port side – complete with a curved bar facing into the wheelhouse – and the irresistible option of a spectacular balcony that unfolds from the starboard gunwale.

There is also a choice of one or two routes down to the lower deck, which somewhat counter-intuitively means the cabins can be bigger – there being no need for a central corridor. The forward one goes down to a generous VIP suite in the bows, which has the feel of a private apartment, while the midships companionway leads to a central lobby with a full-beam master suite forward and two versatile twin cabins aft, whose berths slide together to make doubles.

The flybridge is both long and wide with a large dining area, with a convertible sunroof, bar, and Jacuzzi. There is also space aft of the jacuzzi to store a two-seat personal watercraft.

Basic Information

Category: Motor Yacht

Model Year: 2017

Year Built: 2017

Country: United States

Dimensions

LOA: 86' (26.21mm)

Beam: 21.25

Max Draft: 6' 5" (1.96mm)

Speed, Capacities and Weight

Cruise Speed: 24 Knots Kts. (28 MPH)

Max Speed: 30 Knots Kts. (35 MPH)

Water Capacity: 370 Gallons

Fuel Capacity: 2907 Gal Gallons

Accommodations

Total Cabins: 4

Total Heads: 5

Hull and Deck Information

Hull Material: Fiberglass

Engine Information

Engines: 2

Manufacturer: MTU

Engine Type: Inboard

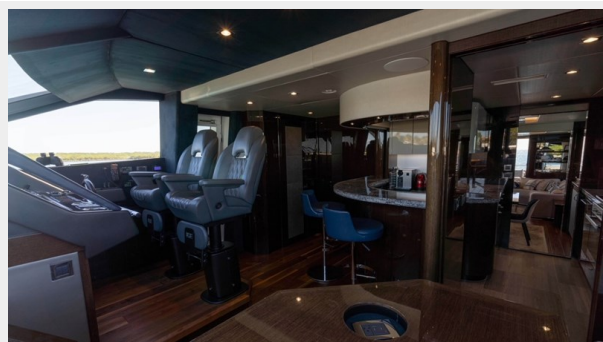
Fuel Type: Diesel

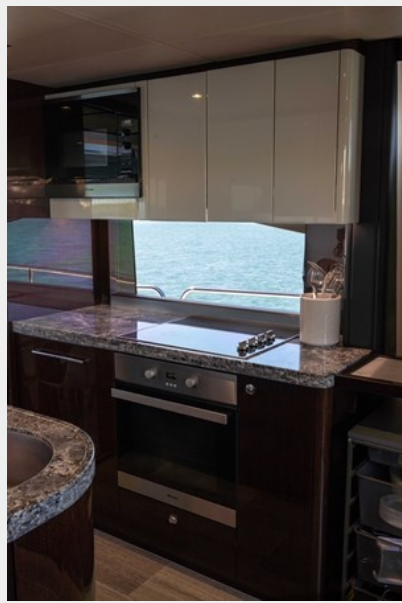
PHOTOS







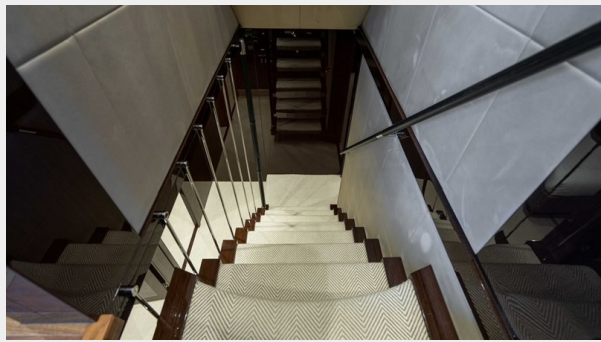












CONTACTS

Andrey Shestakov, leading yacht broker of the sales department of Shestakov Yacht Sales Inc. Shestakov Yacht Sales Inc., the official representative of the Miami/Fort Lauderdale FL headquarters.

Contact details

Email: andrey@shestakovyachtsales.com

Web: shestakovyachtsales.com/en/

Telephones

USA: +1(954)274-4435

Office hours

Monday – Saturday: **9:00 - 21:00** EDT

Sunday: **closed**

Address



Harbour Towne Marina, 850 NE 3rd St,
STE 213, Dania, FL 33004