

PASSEPARTOUT — MOONEN



Builder: MOONEN

Year Built: 2005

Model: Motor Yacht

Price: PRICE ON APPLICATION

Location: Italy

LOA: 101' 1" (30.8mm)

Beam: 23.62

Max Draft: 6' 7" (2mm)

Cruise Speed: 11 Knots Kts. (13 MPH)

Max Speed: 13 Knots Kts. (15 MPH)

Our experienced yacht broker, Andrey Shestakov, will help you choose and buy a yacht that best suits your needs **PASSEPARTOUT — MOONEN** from our catalogue. Presently, at Shestakov Yacht Sales Inc., we have a wide variety of yachts available on our sale's list. We also work in close contact with all the big yacht manufacturers from all over the world.

If you would like to buy a yacht **PASSEPARTOUT — MOONEN** or would like help answering any questions concerning purchasing, selling or chartering a yacht, please call **+1(954)274-4435**

TABLE OF CONTENTS

TABLE OF CONTENTS	2
SPECIFICATIONS	4
Overview	4
Basic Information	4
Dimensions	4
Speed, Capacities and Weight	5
Accommodations	5
Hull and Deck Information	5
Engine Information	5
PHOTOS	6
Cruising	6
Cruising	6
Main deck salon	6
Main deck salon	6
Main deck salon	6
Main deck salon	6
Main deck salon dining area	7
Main deck salon dining area	7
Master cabin	7
Master cabin	7
Master cabin en suite	7
Lower deck corridor	7
Twin cabin en suite	8
Twin cabin	8
Twin cabin	8
Twin cabin	8
Twin cabin	8
Galley	8

Crew mess	9
Bridge	9
Sun deck	9
Sun deck	9
Sun deck	9
Sun deck aft	9
Main deck aft	10
Main deck aft	10
Foredeck	10
Cruising	10
Cruising	10
Aerial view	10
CONTACTS	11
Contact details	11
Telephones	11
Office hours	11
Address	11

SPECIFICATIONS

Overview

PASSEPARTOUT is a 30.8m (101ft) motor yacht, built of robust steel and aluminium construction by renowned Moonen shipbuilders. Delivered in 2005, she is just out of the dock from a multi-million-euro refit, including a full repaint, addition of zero speed stabilisers and a new and extended swim platform. A carefully maintained yacht, only used privately, she offers excellent and flexible accommodation for 9 guests, including a main deck owner's suite. With her new exterior look in smart grey, white and black - the stamp of the famous designer Tommaso Spadolini - PASSEPARTOUT now shows off a sportier, more modern profile. In pristine condition inside and out, as well as her master suite she offers four additional cabins on the lower deck – an excellent family-friendly flexible layout for potential charter use. Her flybridge has also become a dedicated guest area – a great feature for a yacht of this size. The addition of the new swim platform is a standout feature, as it frees-up deck space previously taken by the tender, and it adds the 'beach club' feel to the yacht. PASSEPARTOUT also has a walk-around main deck, which allows guests maximum enjoyment of the fore deck sunbathing area, and a sense of exploration when aboard. PASSEPARTOUT offers the smart investor a compelling package and an excellent pedigree. She is a unique model, the Moonen 96, with enviable internal volume of 196GT. Her seaworthiness is proven, and she records a long-range capability of 4,500nm. With a top speed of 13 knots, and she cruises comfortably at 11 knots powered by twin 1,015hp Caterpillar C18 with low engine hours.

Basic Information

Category: Motor Yacht

Sub Category: Motor Yacht

Model Year: 2005

Year Built: 2005

Country: Italy

Dimensions

LOA: 101' 1" (30.8mm)

Beam: 23.62

Max Draft: 6' 7" (2mm)

Speed, Capacities and Weight

Cruise Speed: 11 Knots Kts. (13 MPH)

Cruise Speed Range: 4500

Max Speed: 13 Knots Kts. (15 MPH)

Gross Tonnage: 196 Pounds

Water Capacity: 3500 Gallons

Fuel Capacity: 7925.16 Gal Gallons

Fuel Consumption: 26.42 Gal Gallons

Accommodations

Total Cabins: 5

Total Berths: 5

Total Heads: 9

Crew Heads: 4

Hull and Deck Information

Hull Material: Steel

Deck Material: Teak

Hull Color: White

Exterior Designer: Rene Van Der Velden/Tommaso Spadolini

Interior Designer: Alessandra Negrato

Engine Information

Engines: 2

Manufacturer: Caterpillar

Fuel Type: Diesel

PHOTOS

Cruising



Cruising



Main deck salon



Main deck salon



Main deck salon



Main deck salon



Main deck salon dining area



Main deck salon dining area



Master cabin



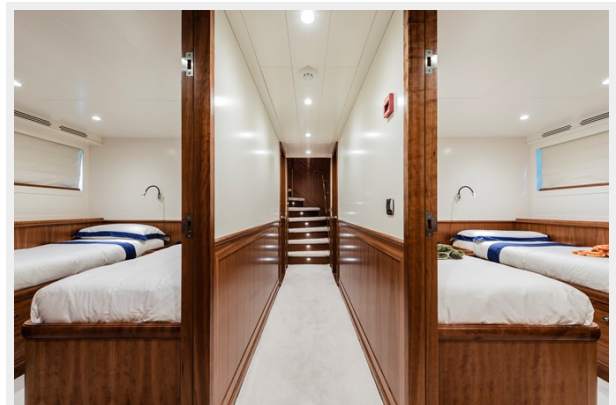
Master cabin



Master cabin en suite



Lower deck corridor



Twin cabin



Twin cabin en suite



Twin cabin



Twin cabin



Twin cabin



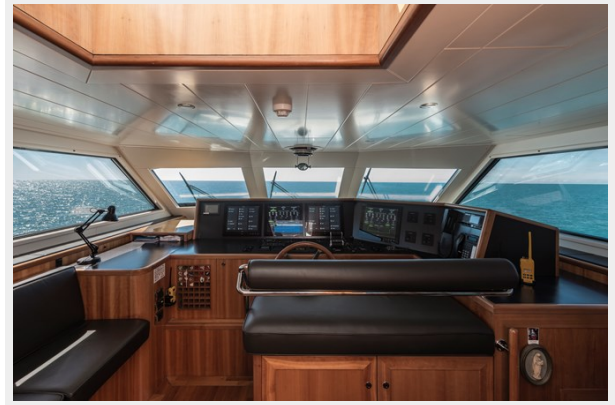
Galley



Crew mess



Bridge



Sun deck



Sun deck



Sun deck



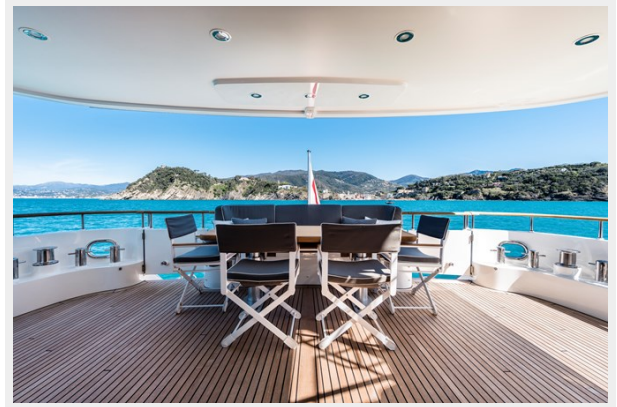
Sun deck aft



Main deck aft



Main deck aft



Foredeck



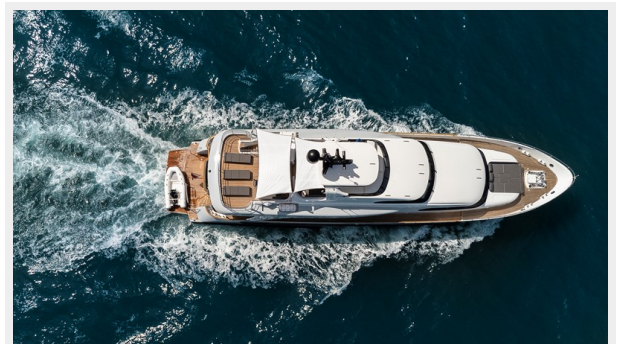
Cruising



Cruising



Aerial view



CONTACTS

Andrey Shestakov, leading yacht broker of the sales department of Shestakov Yacht Sales Inc. Shestakov Yacht Sales Inc., the official representative of the Miami/Fort Lauderdale FL headquarters.

Contact details

Email: andrey@shestakovyachtsales.com

Web: shestakovyachtsales.com/en/

Telephones

USA: +1(954)274-4435

Office hours

Monday – Saturday: **9:00 - 21:00** EDT

Sunday: **closed**

Address



Harbour Towne Marina, 850 NE 3rd St,
STE 213, Dania, FL 33004