

## IRISH LADY — MONK



**Builder:** MONK

**Year Built:** 1984

**Model:** Trawler Yacht

**Price:** PRICE ON APPLICATION

**Location:** United States

**LOA:** 36' (10.97mm)

**Beam:** 13

**Max Draft:** 4' (1.22mm)

**Cruise Speed:** 7 Knots Kts. (8 MPH)

**Max Speed:** 9 Knots Kts. (10 MPH)

Our experienced yacht broker, Andrey Shestakov, will help you choose and buy a yacht that best suits your needs **Irish Lady — MONK** from **our catalogue**. Presently, at **Shestakov Yacht Sales Inc.**, we have a wide variety of yachts available on **our sale's list**. We also work in close contact with all the big **yacht manufacturers** from all over the world.

If you would like to buy a yacht **Irish Lady — MONK** or would like help answering any questions concerning purchasing, selling or chartering a yacht, please call **+1(954)274-4435**

# TABLE OF CONTENTS

TABLE OF CONTENTS	2
SPECIFICATIONS	6
Overview	6
Basic Information	6
Dimensions	6
Speed, Capacities and Weight	7
Accommodations	7
Hull and Deck Information	7
Engine Information	7
PHOTOS	8
000 HR	8
100 Stbd Outside	8
102 IMG_5613	8
101 IMG_5612	8
104 IMG_5615	9
103 IMG_5614	9
105 IMG_5616	9
106 IMG_5617	9
107 IMG_5618	10
108 IMG_5619	10
110 IMG_5621	10
111 IMG_5622	10
113 IMG_5624	11
112 IMG_5623	11
115 IMG_5626	11
116 IMG_5641	11
117 IMG_5642	12
118 IMG_5643	12

---

119 IMG_5644	12
120 IMG_5627	12
121 IMG_5635	13
123 IMG_5637	13
125 IMG_5639	13
124 IMG_5638	13
220	13
221	13
222	14
223	14
224	14
225	14
228	14
227	14
240 Master	15
241 Master	15
242 Master	15
243	15
244	15
245	15
246	16
250	16
251	16
252	16
280	17
281	17
282	17
283	17
284	18

---

---

290	18
291	18
292	18
301 IMG_5628	19
302 IMG_5629	19
304 IMG_5631	19
303 IMG_5630	19
305 IMG_5632	19
306 IMG_5633	19
307 IMG_5634	20
308 IMG_5652	20
309 IMG_5653	20
310 IMG_5654	20
312 IMG_5656	20
311 IMG_5655	20
313 IMG_5657	21
314 IMG_5658	21
315 IMG_5660	21
316 IMG_5661	21
317 IMG_5663	22
318 IMG_5664	22
319 IMG_5683	22
320 IMG_5684	22
322 IMG_5659	23
321 IMG_5680	23
332 IMG_5678	23
331 IMG_5668	23
333 IMG_5679	24
340 IMG_5685	24

---

---

342 IMG_5687	24
341 IMG_5686	24
343 IMG_5688	25
344 IMG_5689	25
345 IMG_5690	25
346 IMG_5691	25
348 IMG_5693	25
347 IMG_5692	25
349 IMG_5694	26
CONTACTS	27
Contact details	27
Telephones	27
Office hours	27
Address	27

---

# SPECIFICATIONS

---

## Overview

---

Irish Lady, a Monk 36' Trawler is a graceful aft cabin trawler designed by famed naval architect Ed Monk and is considered to offer a solid mix of simplicity, comfort, and seaworthiness. There were more than 250 of these trawlers built in their 25 years of production, which ended in 2007. With a tall bow, good sight lines, and wide side decks and rails, this trawler is built for cruising comfort and safety. The semi-displacement hull also features a prop protecting keel. The up-swept flared bow provides a dry ride. The vessel hull is solid fiberglass construction throughout.

The bridge clearance is 23.5' with the antennas, 20' with the mast, and 17' with the bimini top; this makes Irish Lady a perfect vessel for the Great Loop or any cruising that involves multiple bridges.

Irish Lady has beautiful non-skid decks, with weather resistant teak steps. Her teak handrails and toe caps are varnished. The current owners, her fourth, were ready to do the Great Loop, but their plans have changed. This Lady is ready for that adventure or any adventure her new owners can dream up!

---

## Basic Information

---

**Category:** Trawler Yacht

**Model Year:** 1984

**Year Built:** 1984

**Country:** United States

---

## Dimensions

---

**LOA:** 36' (10.97mm)

**Beam:** 13

**Max Draft:** 4' (1.22mm)

---

## Speed, Capacities and Weight

---

**Cruise Speed:** 7 Knots Kts. (8 MPH)

**Max Speed:** 9 Knots Kts. (10 MPH)

**Water Capacity:** 56 Gallons

**Holding Tank:** 35 Gal Gallons

**Fuel Capacity:** 160 Gal Gallons

---

## Accommodations

---

**Total Cabins:** 2

**Total Berths:** 3

**Total Heads:** 2

---

## Hull and Deck Information

---

**Hull Material:** Fiberglass

---

## Engine Information

---

**Engines:** 1

**Manufacturer:** Perkins

**Engine Type:** Inboard

**Fuel Type:** Diesel

# PHOTOS

**000 HR**



**100 Stbd Outside**



**101 IMG\_5612**



**102 IMG\_5613**





103 IMG\_5614



104 IMG\_5615



105 IMG\_5616



106 IMG\_5617



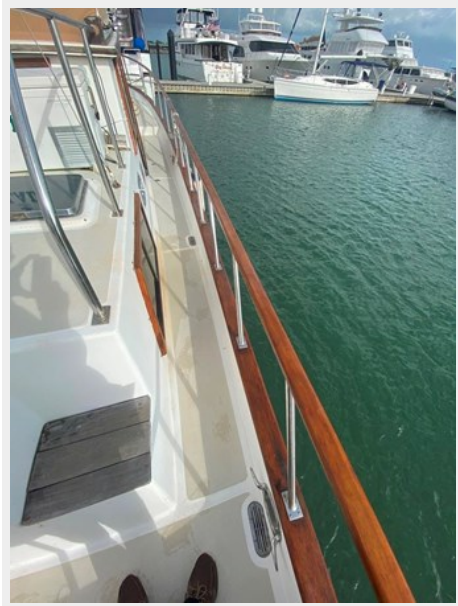
107 IMG\_5618



108 IMG\_5619



110 IMG\_5621



111 IMG\_5622





112 IMG\_5623



113 IMG\_5624



115 IMG\_5626



116 IMG\_5641



117 IMG\_5642



118 IMG\_5643



119 IMG\_5644



120 IMG\_5627





121 IMG\_5635



123 IMG\_5637



124 IMG\_5638



125 IMG\_5639



220



221





222



223



224



225



228

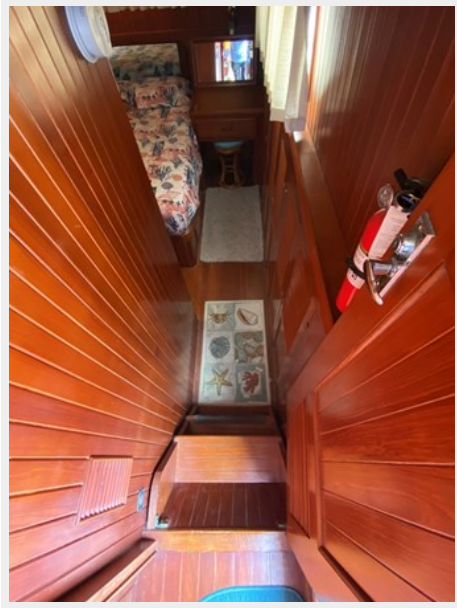


227





**240 Master**



**241 Master**



**242 Master**



**243**



**244**



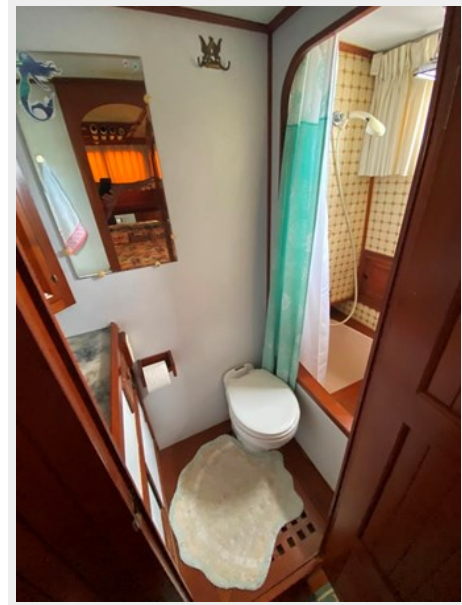
**245**



246



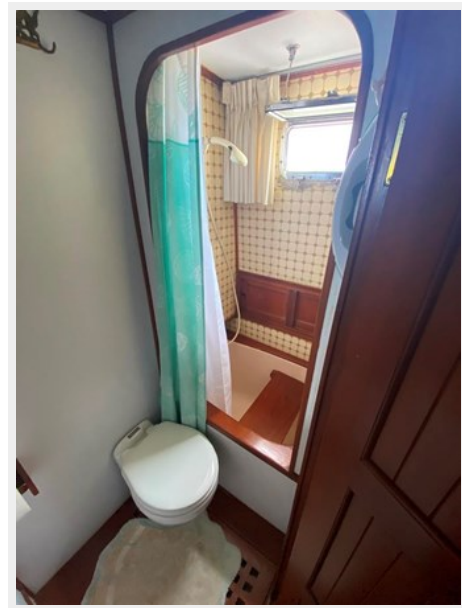
250



251



252





280



281



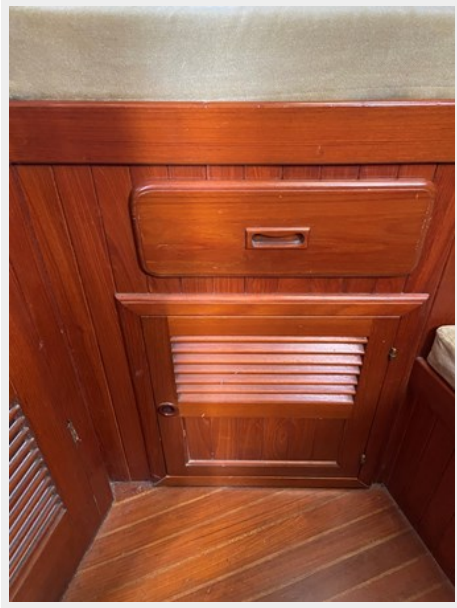
282



283



284



290



291



292





301 IMG\_5628



302 IMG\_5629



303 IMG\_5630



304 IMG\_5631



305 IMG\_5632



306 IMG\_5633



307 IMG\_5634



308 IMG\_5652



309 IMG\_5653



310 IMG\_5654



311 IMG\_5655



312 IMG\_5656

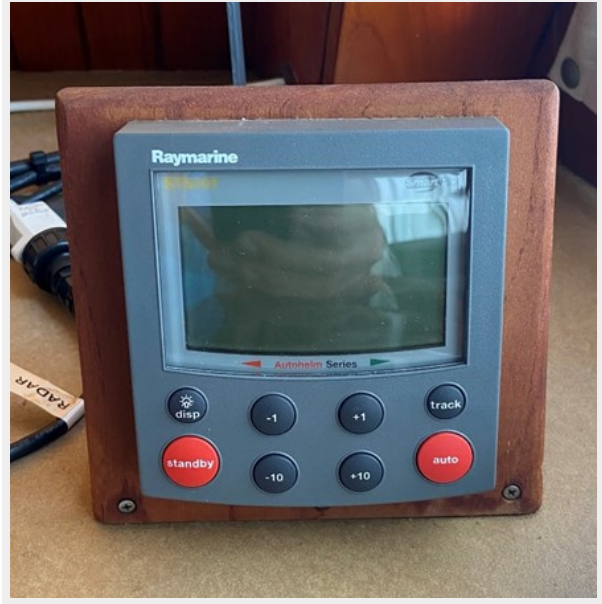




313 IMG\_5657



314 IMG\_5658



315 IMG\_5660



316 IMG\_5661



317 IMG\_5663



318 IMG\_5664



319 IMG\_5683



320 IMG\_5684





321 IMG\_5680



322 IMG\_5659



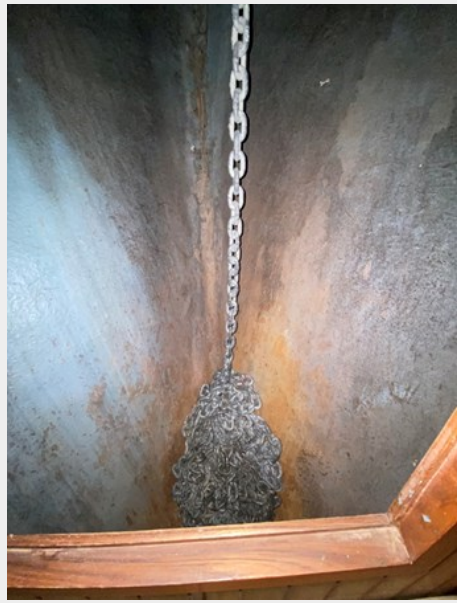
331 IMG\_5668



332 IMG\_5678



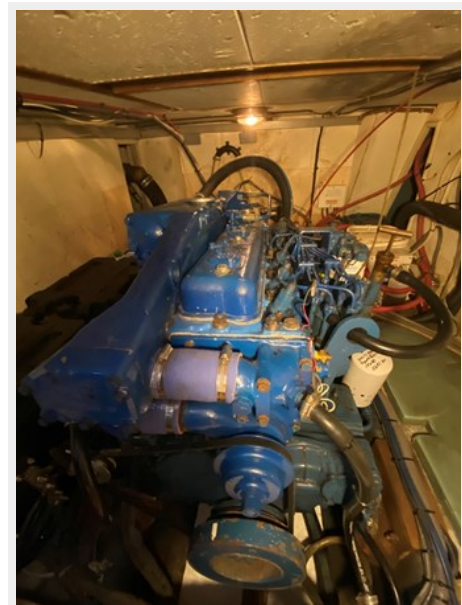
333 IMG\_5679



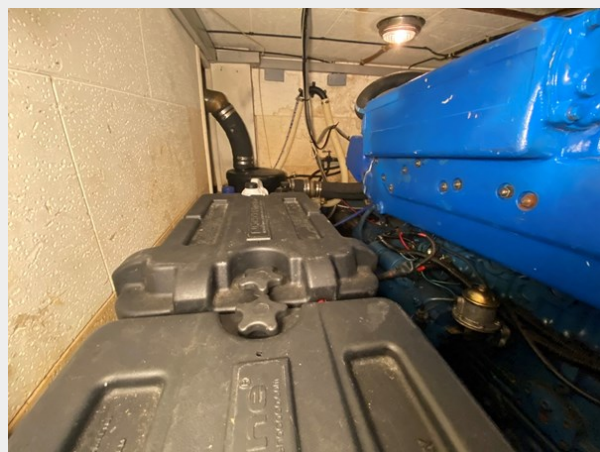
340 IMG\_5685



342 IMG\_5687

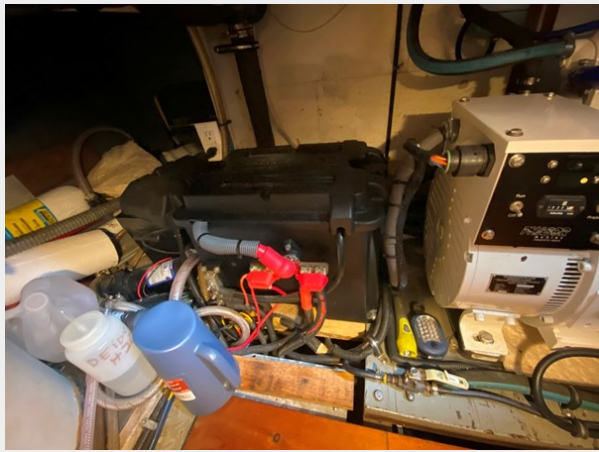


341 IMG\_5686





343 IMG\_5688



344 IMG\_5689



345 IMG\_5690



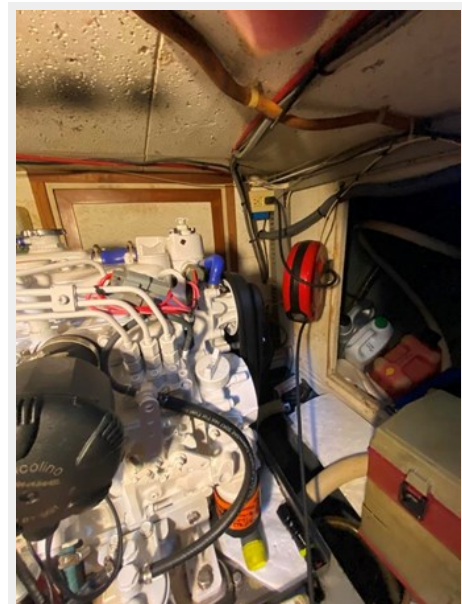
346 IMG\_5691



347 IMG\_5692



348 IMG\_5693



349 IMG\_5694



# CONTACTS

---

Andrey Shestakov, leading yacht broker of the sales department of Shestakov Yacht Sales Inc. Shestakov Yacht Sales Inc., the official representative of the Miami/Fort Lauderdale FL headquarters.

## Contact details

---

Email: **andrey@shestakovyachtsales.com**

Web: [shestakovyachtsales.com/en/](http://shestakovyachtsales.com/en/)

## Telephones

---

USA: **+1(954)274-4435**

## Office hours

---

Monday – Saturday: **9:00 - 21:00** EDT

Sunday: **closed**

## Address

---



Harbour Towne Marina, 850 NE 3rd St, STE 213, Dania, FL 33004