

NUMARINE 37XP-17 — NUMARINE



Builder: NUMARINE

Year Built: 2024

Model: Motor Yacht

Price: PRICE ON APPLICATION

Location: Turkey

LOA: 121' 5" (37mm)

Beam: 26.24

Max Draft: 8' 11" (2.71mm)

Cruise Speed: 12 Knots Kts. (14 MPH)

Max Speed: 14 Knots Kts. (16 MPH)

Our experienced yacht broker, Andrey Shestakov, will help you choose and buy a yacht that best suits your needs **Numarine 37XP-17 — NUMARINE** from our catalogue. Presently, at **Shestakov Yacht Sales Inc.**, we have a wide variety of yachts available on our sale's list. We also work in close contact with all the big yacht manufacturers from all over the world.

If you would like to buy a yacht **Numarine 37XP-17 — NUMARINE** or would like help answering any questions concerning purchasing, selling or chartering a yacht, please call **+1(954)274-4435**

TABLE OF CONTENTS

TABLE OF CONTENTS	2
SPECIFICATIONS	3
Overview	3
Basic Information	3
Dimensions	3
Speed, Capacities and Weight	4
Accommodations	4
Hull and Deck Information	4
Engine Information	4
PHOTOS	5
CONTACTS	14
Contact details	14
Telephones	14
Office hours	14
Address	14

SPECIFICATIONS

Overview

The next available 37XP is Hull #9 in the series with available delivery dates of late 2024 and/or early 2025. Having sold 7 37XP models over the past 3 years we are happy to discuss all available options. Full displacement steel hull, composite superstructure, 345 GRT expedition yacht with 5,000nm+ range, ability to carry 9m tender + 3 jet skis on the boat deck, 5 or 6 cabin layouts, designated beach club.

Key highlights include:

- Expansive windows on the main deck all the way forward towards the vertical bow
- Master en-suite located forward on the main deck
- Possible to have private master deck where the sky lounge is typically located
- Huge boat deck that can carry up to a 9m tender + 3 jet skis
- Full displacement steel hull with composite superstructure
- 5 or 6 cabin layouts available
- Large volume 345 Gross Tons
- Designated beach club area back aft
- Impressive 5,500nm range

Basic Information

Category: Motor Yacht

Sub Category: Expedition or Explorer

Model Year: 2024

Year Built: 2024

Country: Turkey

Dimensions

LOA: 121' 5" (37mm)

LWL: 115' 5" (35.16mm)

Beam: 26.24

Max Draft: 8' 11" (2.71mm)

Speed, Capacities and Weight

Cruise Speed: 12 Knots Kts. (14 MPH)

Cruise Speed Range: 6000

Max Speed: 14 Knots Kts. (16 MPH)

Gross Tonnage: 345 Pounds

Water Capacity: 3000 Gallons

Holding Tank: 501.93 Gal Gallons

Fuel Capacity: 13472.77 Gal Gallons

Accommodations

Total Cabins: 6

Sleeps: 12

Total Heads: 7

Crew Cabin: 7

Crew Berths: 7

Hull and Deck Information

Hull Material: Steel

Deck Material: Teak and Steel

Hull Configuration: Displacement w/
Bulbous Bow

Hull Designer: Umberto Tagliavini

Exterior Designer: Can Yalman

Interior Designer: Can Yalman

Engine Information

Engines: 2

Manufacturer: MAN

Engine Type: Inboard

Fuel Type: Diesel

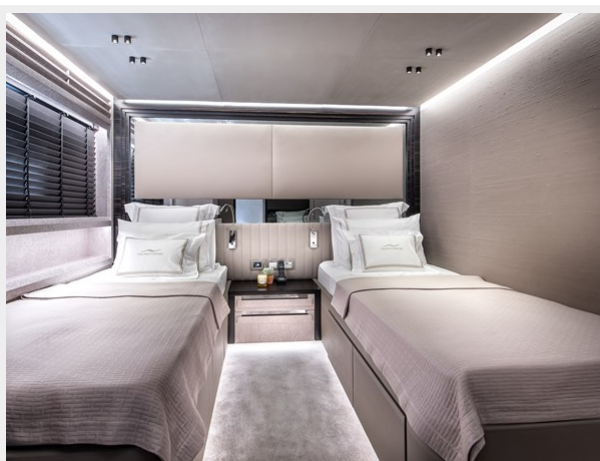
PHOTOS

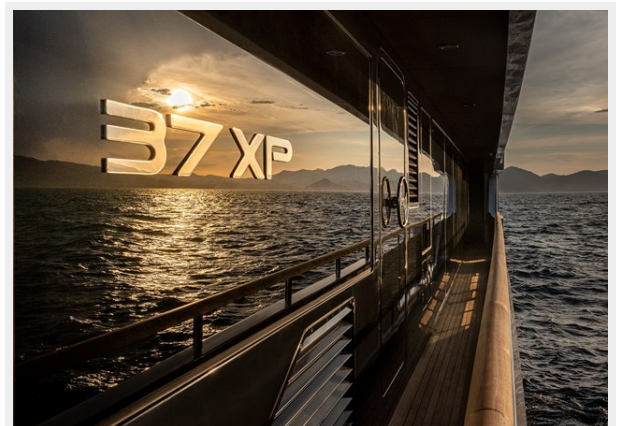


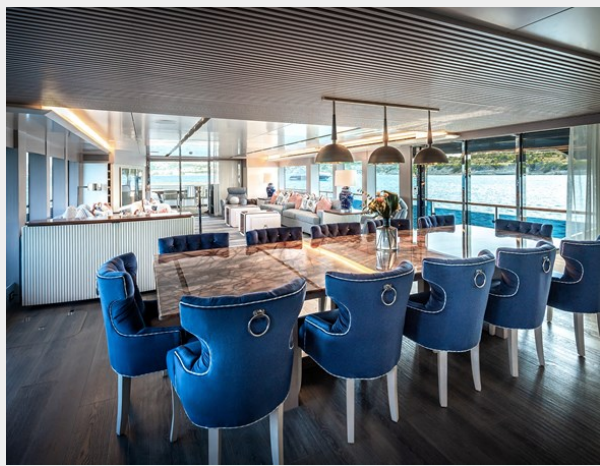


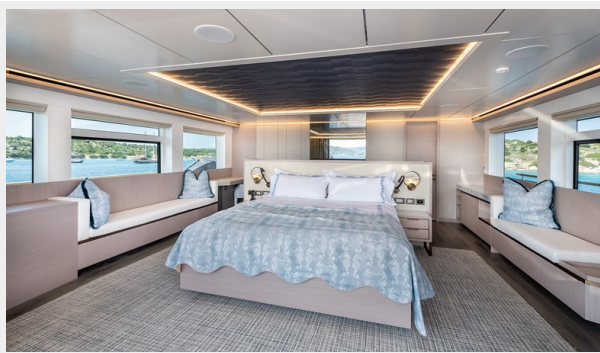


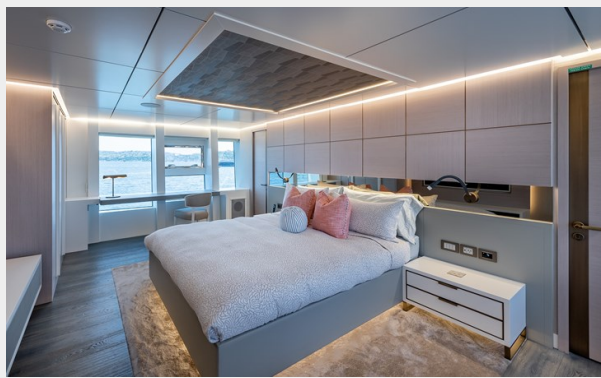












CONTACTS

Andrey Shestakov, leading yacht broker of the sales department of Shestakov Yacht Sales Inc. Shestakov Yacht Sales Inc., the official representative of the Miami/Fort Lauderdale FL headquarters.

Contact details

Email: andrey@shestakovyachtsales.com

Web: shestakovyachtsales.com/en/

Telephones

USA: +1(954)274-4435

Office hours

Monday – Saturday: **9:00 - 21:00** EDT

Sunday: **closed**

Address



Harbour Towne Marina, 850 NE 3rd St,
STE 213, Dania, FL 33004