

NUMARINE 22XP HULL #7 — NUMARINE



Builder: NUMARINE

Year Built: 2023

Model: Motor Yacht

Price: PRICE ON APPLICATION

Location: Turkey

LOA: 72' 2" (22mm)

Beam: 19

Max Draft: 6' 2" (1.88mm)

Cruise Speed: 9 Knots Kts. (10 MPH)

Max Speed: 12.5 Knots Kts. (14 MPH)

Our experienced yacht broker, Andrey Shestakov, will help you choose and buy a yacht that best suits your needs **Numarine 22XP Hull #7 — NUMARINE** from our catalogue. Presently, at Shestakov Yacht Sales Inc., we have a wide variety of yachts available on our sale's list. We also work in close contact with all the big yacht manufacturers from all over the world.

If you would like to buy a yacht **Numarine 22XP Hull #7 — NUMARINE** or would like help answering any questions concerning purchasing, selling or chartering a yacht, please call **+1(954)274-4435**

TABLE OF CONTENTS

TABLE OF CONTENTS	2
SPECIFICATIONS	3
Overview	3
Basic Information	3
Dimensions	3
Speed, Capacities and Weight	3
Accommodations	4
Hull and Deck Information	4
Engine Information	4
PHOTOS	5
CONTACTS	12
Contact details	12
Telephones	12
Office hours	12
Address	12

SPECIFICATIONS

Overview

The 22XP is Numarine's latest model in the popular XP series of expedition yachts. After introducing the line 6 years ago Numarine has sold 20 26XP models making it their most popular size thus prompting them to create the more affordable 22XP. Hull #1-6 have already been sold with Hull #7 available with a Summer 2023 delivery.

Brand new pictures showcasing Hull #1 that was launched in May 2022.

The last 3 pictures showcase the 22XP cruising and in comparison to the ultra successful 26XP model to give you a perspective of her size and volume versus her bigger sister.

Basic Information

Category: Motor Yacht

Sub Category: Expedition or Explorer

Model Year: 2023

Year Built: 2023

Country: Turkey

Dimensions

LOA: 72' 2" (22mm)

Beam: 19

Max Draft: 6' 2" (1.88mm)

Speed, Capacities and Weight

Cruise Speed: 9 Knots Kts. (10 MPH)

Max Speed: 12.5 Knots Kts. (14 MPH)

Water Capacity: 317 Gallons

Holding Tank: 158 Gal Gallons

Fuel Capacity: 1320 Gal Gallons

Accommodations

Total Cabins: 4

Total Heads: 5

Crew Cabin: 2

Crew Heads: 1

Hull and Deck Information

Hull Material: GRP

Deck Material: Teak and Fiberglass

Hull Configuration: Full Displacement

Engine Information

Engines: 2

Manufacturer: Cummings

Engine Type: Inboard

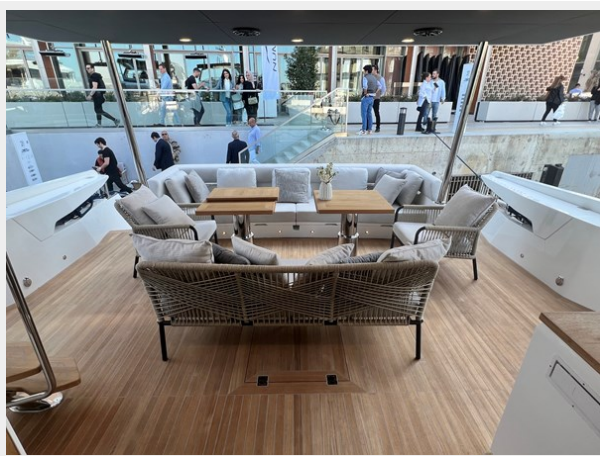
Fuel Type: Diesel

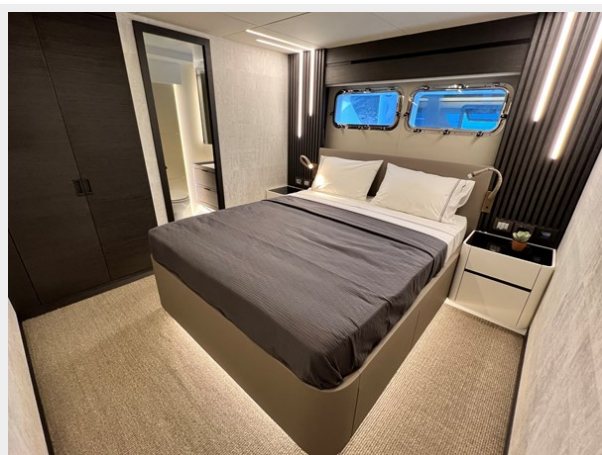
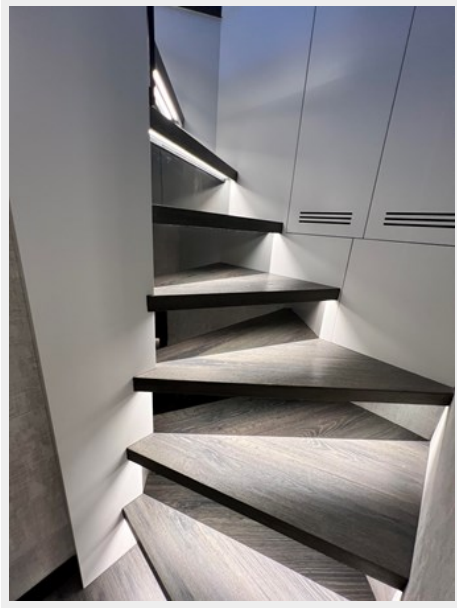
PHOTOS

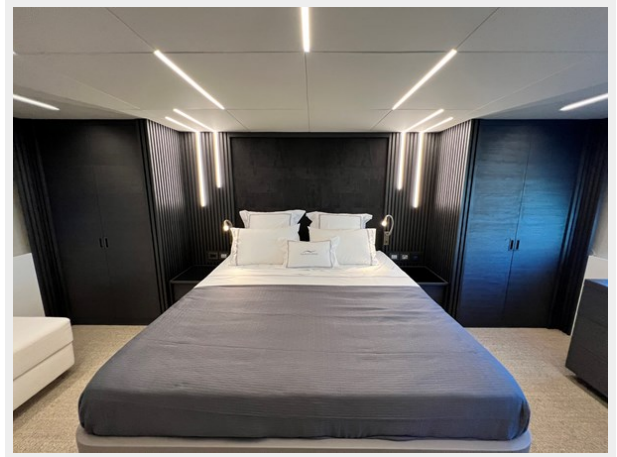
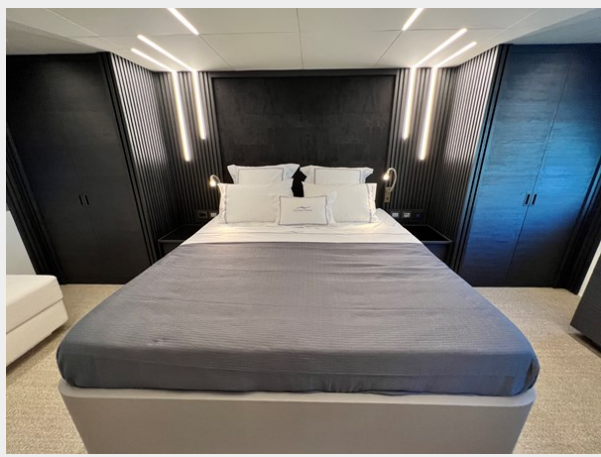
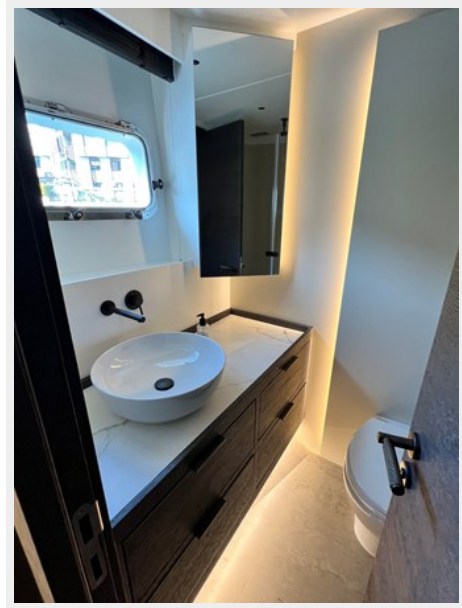














CONTACTS

Andrey Shestakov, leading yacht broker of the sales department of Shestakov Yacht Sales Inc. Shestakov Yacht Sales Inc., the official representative of the Miami/Fort Lauderdale FL headquarters.

Contact details

Email: andrey@shestakovyachtsales.com

Web: shestakovyachtsales.com/en/

Telephones

USA: +1(954)274-4435

Office hours

Monday – Saturday: **9:00 - 21:00** EDT

Sunday: **closed**

Address



Harbour Towne Marina, 850 NE 3rd St,
STE 213, Dania, FL 33004