

MARE-N — VRIPACK



Builder: VRIPACK

Year Built: 2002

Model: Displacement

Price: PRICE ON APPLICATION

Location: Turkey

LOA: 63' 4" (19.3mm)

Beam: 16.56

Min Draft: 4' 9" (1.43mm)

Max Draft: 5' (1.53mm)

Cruise Speed: 7.8 Knots Kts. (9 MPH)

Max Speed: 9 Knots Kts. (10 MPH)

Our experienced yacht broker, Andrey Shestakov, will help you choose and buy a yacht that best suits your needs **Mare-n — VRIPACK** from our catalogue. Presently, at Shestakov Yacht Sales Inc., we have a wide variety of yachts available on our sale's list. We also work in close contact with all the big yacht manufacturers from all over the world.

If you would like to buy a yacht **Mare-n — VRIPACK** or would like help answering any questions concerning purchasing, selling or chartering a yacht, please call **+1(954)274-4435**

TABLE OF CONTENTS

TABLE OF CONTENTS	2
SPECIFICATIONS	4
Overview	4
Basic Information	4
Dimensions	4
Speed, Capacities and Weight	4
Accommodations	5
Hull and Deck Information	5
Engine Information	5
PHOTOS	6
Greece	6
gangway	6
saloon.1	6
aftdeck	6
saloon2.	7
Saloon 002	7
dining area.1.C	7
Saloon 004	7
steering position.1.C	8
Wheelhouse 001	8
Wheelhouse 002	8
Wheelhouse 003	8
owner's stateroom.1.C	9
Wheelhouse 004	9
bathroom.1.C	9
guest room.1.C	9
engine room 004	10
engine room 005	10

double filters	10
double filters	10
rudder, variable pitch prop and tunnel	10
portside stabiliser	10
CONTACTS	11
Contact details	11
Telephones	11
Office hours	11
Address	11

SPECIFICATIONS

Overview

Mare-n is a steel displacement motoryacht and her design is based on the famous seagoing Dutch tugboats asbuilt in the last century. She is designed for global cruising: inland waterways (including the French canals), rivers, the Great Lakes, the Mediterranean or the Baltic, or any of the oceans for that matter (transatlanticrange!). She would also be perfectly suited to live aboard. Designed by Vripack founder Dick Boon and the Vripack design team for his personal use, this is the perfect opportunity to acquire a vessel with outstanding pedigree. Incorporating all Dick's experience she truly is a goanywherevessel.

Basic Information

Category: Displacement

Sub Category: Displacement

Model Year: 2002

Year Built: 2002

Country: Turkey

Dimensions

LOA: 63' 4" (19.3mm)

LWL: 57' 10" (17.62mm)

LOD: 63' 4" (19.3mm)

Beam: 16.56

Min Draft: 4' 9" (1.43mm)

Max Draft: 5' (1.53mm)

Speed, Capacities and Weight

Cruise Speed: 7.8 Knots Kts. (9 MPH)

Cruise Speed Range: 5000

Max Speed: 9 Knots Kts. (10 MPH)

Water Capacity: 5000 Gallons

Holding Tank: 290.59 Gal Gallons

Fuel Capacity: 3117.23 Gal Gallons

Fuel Consumption: 4.23 Gal Gallons

Accommodations

Total Cabins: 3

Total Berths: 6

Sleeps: 6

Total Heads: 2

Hull and Deck Information

Hull Material: Steel

Hull Configuration: Full Displacement

Hull Color: White

Hull Designer: Vripack

Exterior Designer: Dick Boon Vripack

Interior Designer: Vripack

Engine Information

Engines: 1

Manufacturer: Perkins

PHOTOS

Greece



gangway



aftdeck



saloon.I



saloon2.



Saloon 002



Saloon 004



dining area.I.C



steering position.I.C



Wheelhouse 001



Wheelhouse 002



Wheelhouse 003



Wheelhouse 004



owner's stateroom.I.C



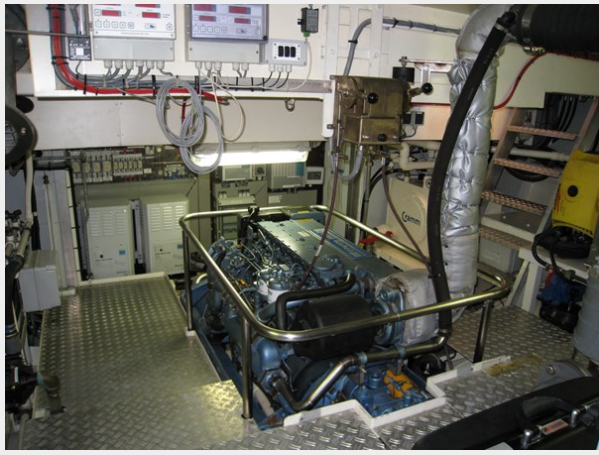
bathroom.I.C



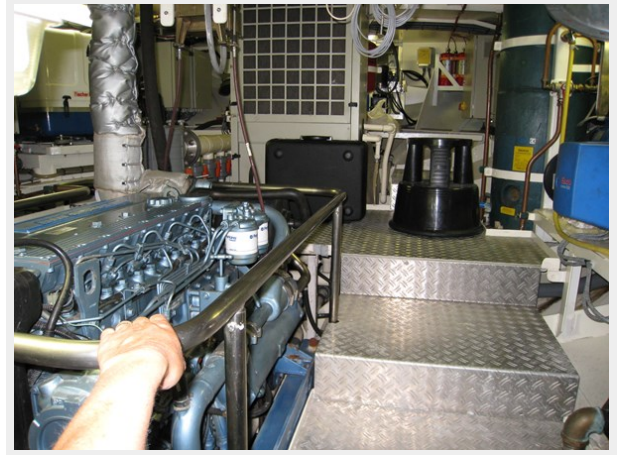
guest room.I.C



engine room 004



engine room 005



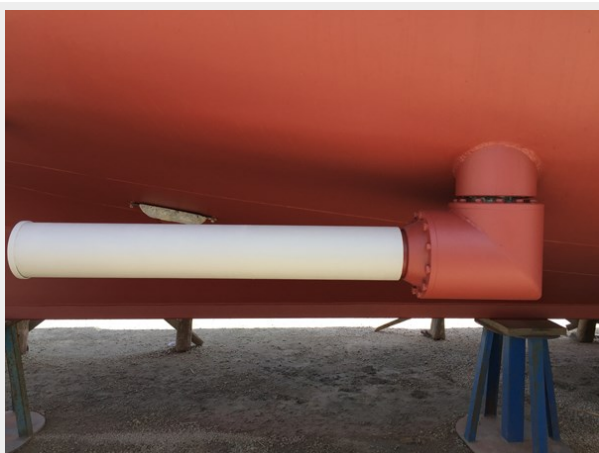
double filters



double filters



portside stabiliser



rudder, variable pitch prop and tunnel



CONTACTS

Andrey Shestakov, leading yacht broker of the sales department of Shestakov Yacht Sales Inc. Shestakov Yacht Sales Inc., the official representative of the Miami/Fort Lauderdale FL headquarters.

Contact details

Email: andrey@shestakovyachtsales.com

Web: shestakovyachtsales.com/en/

Telephones

USA: +1(954)274-4435

Office hours

Monday – Saturday: **9:00 - 21:00** EDT

Sunday: **closed**

Address



Harbour Towne Marina, 850 NE 3rd St,
STE 213, Dania, FL 33004