

CASI CIELO — WESTSHIP/WESTPORT



Builder: WESTSHIP/WESTPORT

Year Built: 1999

Model: Raised Pilothouse

Price: PRICE ON APPLICATION

Location: United States

LOA: 108' (32.92mm)

Beam: 23

Min Draft: 6' (1.83mm)

Cruise Speed: 14 Knots Kts. (16 MPH)

Max Speed: 18 Knots Kts. (21 MPH)

Our experienced yacht broker, Andrey Shestakov, will help you choose and buy a yacht that best suits your needs **CASI CIELO — WESTSHIP/WESTPORT** from our catalogue. Presently, at Shestakov Yacht Sales Inc., we have a wide variety of yachts available on our sale's list. We also work in close contact with all the big yacht manufacturers from all over the world.

If you would like to buy a yacht **CASI CIELO — WESTSHIP/WESTPORT** or would like help answering any questions concerning purchasing, selling or chartering a yacht, please call **+1(954)274-4435**

TABLE OF CONTENTS

TABLE OF CONTENTS	2
SPECIFICATIONS	3
Overview	3
Basic Information	3
Dimensions	3
Speed, Capacities and Weight	4
Accommodations	4
Hull and Deck Information	4
Engine Information	4
PHOTOS	5
CONTACTS	14
Contact details	14
Telephones	14
Office hours	14
Address	14

SPECIFICATIONS

Overview

CASI CIELO represents an excellent value in a 108' Westship/Westport Cockpit MY with (5) Staterooms. She had a refit in 2020 with a complete new paint job along with state-of-the-art new Furuno/Garmin electronics package, NMEA 2000, A/V system, new interior throughout, exterior furnishings, plus much more.

Upgrades/Highlights, 2020:

- Complete new paint job
- Extensive new Garmin/Furuno electronics package integrated to make a redundant system, back by PC Timezero navigation system
- NMEA 2000 installed w/ Sat compass, weather sensors, depth & speed transducer
- Interior refit/soft goods

Basic Information

Category: Raised Pilothouse

Sub Category: Raised Pilothouse

Model Year: 1999

Year Built: 1999

Refit Type: New paint job, all new Garmin & Furuno electronics, new interior, etc. **Country:** United States

Dimensions

LOA: 108' (32.92mm)

LWL: 108' (32.92mm)

LOD: 108' (32.92mm)

Beam: 23

Min Draft: 6' (1.83mm)

Speed, Capacities and Weight

Cruise Speed: 14 Knots Kts. (16 MPH)

Max Speed: 18 Knots Kts. (21 MPH)

Water Capacity: 750 Gallons

Holding Tank: 460 Gal Gallons

Fuel Capacity: 5000 Gal Gallons

Accommodations

Total Cabins: 5

Hull and Deck Information

Hull Material: Fiberglass

Deck Material: Teak

Exterior Designer: Jack Sarin

Interior Designer: Carr Yacht Design

Engine Information

Engines: 2

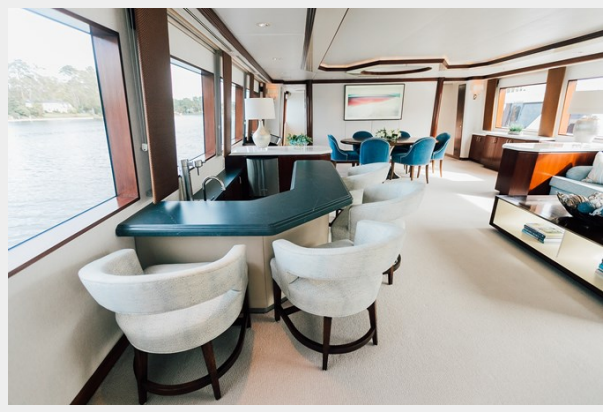
Manufacturer: MTU

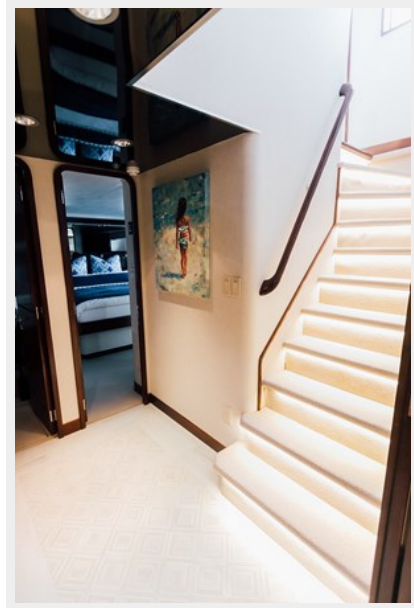
Engine Type: Inboard

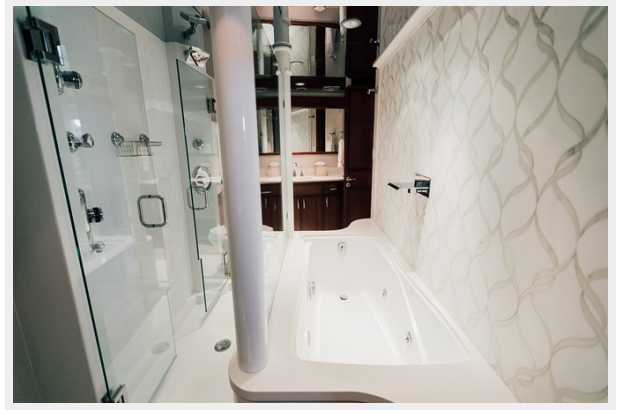
Fuel Type: Diesel

PHOTOS



















CONTACTS

Andrey Shestakov, leading yacht broker of the sales department of Shestakov Yacht Sales Inc. Shestakov Yacht Sales Inc., the official representative of the Miami/Fort Lauderdale FL headquarters.

Contact details

Email: andrey@shestakovyachtsales.com

Web: shestakovyachtsales.com/en/

Telephones

USA: +1(954)274-4435

Office hours

Monday – Saturday: **9:00 - 21:00** EDT

Sunday: **closed**

Address



Harbour Towne Marina, 850 NE 3rd St,
STE 213, Dania, FL 33004