

CRESCENT LADY — CRESCENT



Builder: CRESCENT

Year Built: 2020

Model: Motor Yacht

Price: PRICE ON APPLICATION

LOA: 117' (35.66mm)

Beam: 24

Max Draft: 6' (1.83mm)

Cruise Speed: 19 Knots Kts. (22 MPH)

Max Speed: 26 Knots Kts. (30 MPH)

Our experienced yacht broker, Andrey Shestakov, will help you choose and buy a yacht that best suits your needs **Crescent Lady — CRESCENT** from our catalogue. Presently, at Shestakov Yacht Sales Inc., we have a wide variety of yachts available on our sale's list. We also work in close contact with all the big yacht manufacturers from all over the world.

If you would like to buy a yacht **Crescent Lady — CRESCENT** or would like help answering any questions concerning purchasing, selling or chartering a yacht, please call **+1(954)274-4435**

TABLE OF CONTENTS

TABLE OF CONTENTS	2
SPECIFICATIONS	5
Overview	5
Basic Information	5
Dimensions	5
Speed, Capacities and Weight	6
Accommodations	6
Hull and Deck Information	6
Engine Information	6
PHOTOS	7
Profile	7
Profile	7
Profile	7
Aft Deck Dining Area	7
Main Salon	7
Main Salon	7
Main Salon	8
Main Salon	8
Main Salon Dining Area	8
Main Salon Dining Area	8
Stewardess Pantry	8
Stewardess Pantry	8
Stewardess Pantry	9
Galley	9
Galley	9
Upper Deck VIP Cabin	9
Upper Deck VIP Cabin Head	10
Upper Deck VIP Cabin	10

Upper Deck VIP Cabin Ensuit Head	10
Lower Deck VIP Cabin Ensuit Head	10
Starboard Guest Cabin Ensuit Head	10
Starboard Guest Cabin	10
Starboard Guest Cabin Ensuit Head	11
Starboard Guest Cabin	11
Master Cabin	11
Master Cabin	11
Master Cabin Ensuit Head	12
Master Cabin	12
Bridge	12
Bridge	12
Crew Mess	12
Crew Mess	12
Sundeck	13
Sundeck - Flybridge	13
Boat deck	13
Boat deck	13
Sundeck Wing Station	13
Engine Room	13
Engine Room	14
Profile	14
Profile	14
Profile	14
Profile	14
CONTACTS	15
Contact details	15
Telephones	15
Office hours	15

Address

15

SPECIFICATIONS

Overview

The *Crescent 117* (35.7m) offers versatile interior and exterior spaces with remarkable options for entertaining, lounging and dining. She is ideal for cruising with family or friends. With a top speed of 26 knots and a 2000nm range the Crescent 117 can take you anywhere the heart desires.

Designed by the renowned Naval Architect Gregory C. Marshall, the Crescent 117 features a contemporary, elegant exterior and an interior that will stand the test of time. With her efficient build techniques, this is a great opportunity to have a turn key new yacht which can be easily personalized.

Key features include:

- Five sumptuous guest staterooms including a full beam master, which accommodate 10 guests in plush comfort, plus an additional three crew cabins
- ABT Trac Stabilizers for a comfortable ride even in rough seas
- Jacuzzi on the Sun Deck
- ABT Trac Bow and Stern Thrusters for safe and easy docking
- Twin MTU Detroit Diesel 2735hp engines which give you over 26 knots of hull speed and come with a full two year warranty
- Maretron Vessel Monitoring
- Garmin Navigation Electronics

Basic Information

Category: Motor Yacht

Sub Category: Raised Pilothouse

Model Year: 2020

Year Built: 2020

Dimensions

LOA: 117' (35.66m)

Beam: 24

Max Draft: 6' (1.83m)

Speed, Capacities and Weight

Cruise Speed: 19 Knots Kts. (22 MPH)

Max Speed: 26 Knots Kts. (30 MPH)

Gross Tonnage: 232 Pounds

Water Capacity: 824 Gallons

Holding Tank: 1546 Gal Gallons

Fuel Capacity: 5229 Gal Gallons

Accommodations

Total Cabins: 5

Total Berths: 7

Sleeps: 10

Total Heads: 6

Crew Cabin: 5

Crew Berths: 4

Crew Heads: 2

Hull and Deck Information

Hull Material: Fiberglass

Deck Material: Fiberglass

Hull Configuration: Semi-Displacement

Exterior Designer: Gregory C. Marshall

Interior Designer: Gregory C. Marshall

Engine Information

Engines: 2

Manufacturer: MTU

Engine Type: Inboard

Fuel Type: Diesel

PHOTOS

Profile



Profile



Profile



Aft Deck Dining Area



Main Salon



Main Salon



Main Salon



Main Salon



Main Salon Dining Area



Main Salon Dining Area



Stewardess Pantry



Stewardess Pantry



Stewardess Pantry



Galley



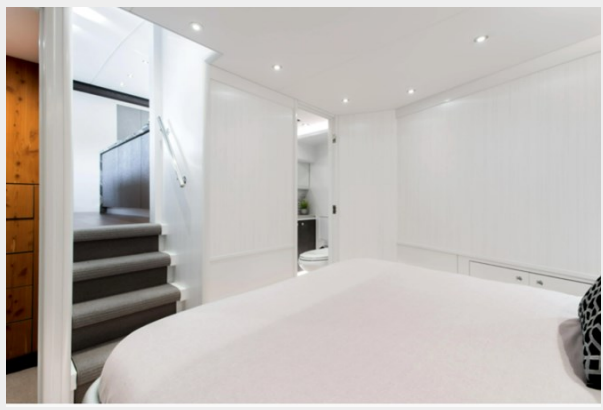
Galley



Upper Deck VIP Cabin



Upper Deck VIP Cabin



Upper Deck VIP Cabin Head



Upper Deck VIP Cabin Ensuit Head



Lower Deck VIP Cabin Ensuit Head



Starboard Guest Cabin



Starboard Guest Cabin Ensuit Head



Starboard Guest Cabin Ensuit Head

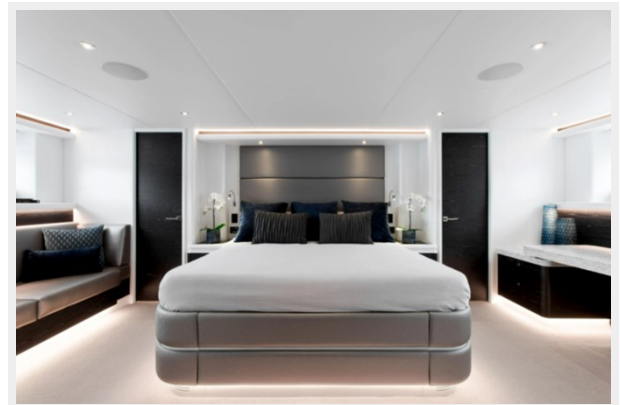
Starboard Guest Cabin



Master Cabin



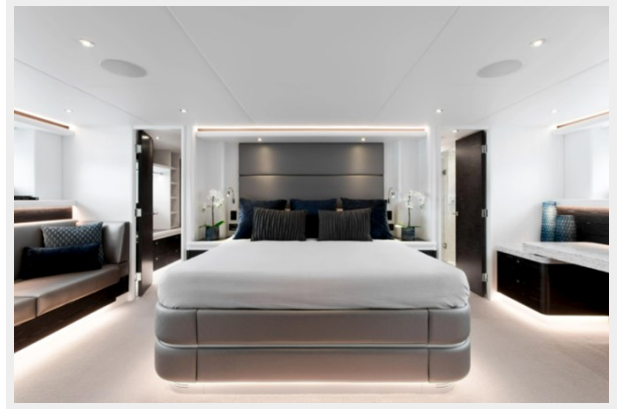
Master Cabin



Master Cabin Ensuit Head



Master Cabin



Bridge



Bridge



Crew Mess



Crew Mess



Sundeck



Sundeck - Flybridge



Boat deck



Boat deck



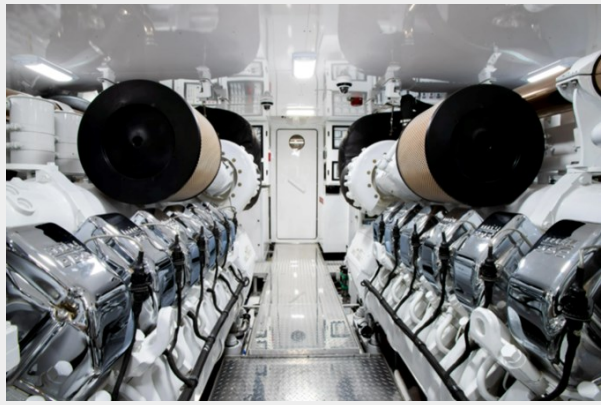
Sundeck Wing Station



Engine Room



Engine Room



Profile



Profile



Profile



Profile



CONTACTS

Andrey Shestakov, leading yacht broker of the sales department of Shestakov Yacht Sales Inc. Shestakov Yacht Sales Inc., the official representative of the Miami/Fort Lauderdale FL headquarters.

Contact details

Email: andrey@shestakovyachtsales.com

Web: shestakovyachtsales.com/en/

Telephones

USA: +1(954)274-4435

Office hours

Monday – Saturday: **9:00 - 21:00** EDT

Sunday: **closed**

Address



Harbour Towne Marina, 850 NE 3rd St,
STE 213, Dania, FL 33004