

# 1963 TRAWLER DE HASS NORTH SEA, WANDERBIRD — CUSTOM



**Builder:** CUSTOM

**LOA:** 90' (27.43mm)

**Year Built:** 1963

**Beam:** 21

**Model:** Cruising Sailboat

**Price:** PRICE ON APPLICATION

**Location:** United States

Our experienced yacht broker, Andrey Shestakov, will help you choose and buy a yacht that best suits your needs 1963 Trawler De Hass North Sea, Wanderbird — CUSTOM from our catalogue. Presently, at Shestakov Yacht Sales Inc., we have a wide variety of yachts available on our sale's list. We also work in close contact with all the big yacht manufacturers from all over the world.

If you would like to buy a yacht 1963 Trawler De Hass North Sea, Wanderbird — CUSTOM or would like help answering any questions concerning purchasing, selling or chartering a yacht, please call +1(954)274-4435

# TABLE OF CONTENTS

|                                   |    |
|-----------------------------------|----|
| TABLE OF CONTENTS                 | 2  |
| SPECIFICATIONS                    | 6  |
| Overview                          | 6  |
| Basic Information                 | 7  |
| Dimensions                        | 7  |
| Accommodations                    | 7  |
| Hull and Deck Information         | 7  |
| Engine Information                | 8  |
| PHOTOS                            | 9  |
| 1x1trans                          | 9  |
| 8214557_20220212135546281_1_LARGE | 9  |
| 8214557_20220212135550501_1_LARGE | 9  |
| 8214557_20220212135554459_1_LARGE | 9  |
| 8214557_20220212135558031_1_LARGE | 9  |
| 8214557_20220212135602765_1_LARGE | 9  |
| 8214557_20220212135605783_1_LARGE | 9  |
| 8214557_20220212135609071_1_LARGE | 9  |
| 8214557_20220212135615836_1_LARGE | 10 |
| 8214557_20220212135618980_1_LARGE | 10 |
| 8214557_20220212135622192_1_LARGE | 10 |
| 8214557_20220212135624688_1_LARGE | 10 |
| 8214557_20220212135627882_1_LARGE | 10 |
| 8214557_20220212135630893_1_LARGE | 10 |
| 8214557_20220212135633791_1_LARGE | 10 |
| 8214557_20220212135636773_1_LARGE | 10 |
| 8214557_20220212135640093_1_LARGE | 11 |
| 8214557_20220212135646253_1_LARGE | 11 |
| 8214557_20220212135652489_1_LARGE | 11 |

---

|                                   |    |
|-----------------------------------|----|
| 8214557_20220212135655809_1_LARGE | 11 |
| 8214557_20220212135659343_1_LARGE | 11 |
| 8214557_20220212135702454_1_LARGE | 11 |
| 8214557_20220212135706009_1_LARGE | 11 |
| 8214557_20220212135711513_1_LARGE | 11 |
| 8214557_20220212135714073_1_LARGE | 12 |
| 8214557_20220212135717850_1_LARGE | 12 |
| 8214557_20220212135722183_1_LARGE | 12 |
| 8214557_20220212135726287_1_LARGE | 12 |
| 8214557_20220212135729700_1_LARGE | 12 |
| 8214557_20220212135732851_1_LARGE | 12 |
| 8214557_20220212135737238_1_LARGE | 12 |
| 8214557_20220212135743239_1_LARGE | 12 |
| 8214557_20220212135747162_1_LARGE | 13 |
| 8214557_20220212135751010_1_LARGE | 13 |
| 8214557_20220212135755119_1_LARGE | 13 |
| 8214557_20220212135758777_1_LARGE | 13 |
| 8214557_20220212135802211_1_LARGE | 13 |
| 8214557_20220212135805826_1_LARGE | 13 |
| 8214557_20220212135808536_1_LARGE | 13 |
| 8214557_20220212135811770_1_LARGE | 13 |
| 8214557_20220212135814939_1_LARGE | 14 |
| 8214557_20220212135817686_1_LARGE | 14 |
| 8214557_20220212135820246_1_LARGE | 14 |
| 8214557_20220212135824320_1_LARGE | 14 |
| 8214557_20220212135827534_1_LARGE | 14 |
| 8214557_20220212135831202_1_LARGE | 14 |
| 8214557_20220212135835310_1_LARGE | 14 |
| 8214557_20220212135839012_1_LARGE | 14 |

---

|                                   |    |
|-----------------------------------|----|
| 8214557_20220212135842231_1_LARGE | 15 |
| 8214557_20220212135845910_1_LARGE | 15 |
| 8214557_20220212135848623_1_LARGE | 15 |
| 8214557_20220212135852095_1_LARGE | 15 |
| 8214557_20220212135855211_1_LARGE | 15 |
| 8214557_20220212135858366_1_LARGE | 15 |
| 8214557_20220212135901320_1_LARGE | 15 |
| 8214557_20220212135904685_1_LARGE | 15 |
| 8214557_20220212135907722_1_LARGE | 16 |
| 8214557_20220212135910743_1_LARGE | 16 |
| 8214557_20220212135913757_1_LARGE | 16 |
| 8214557_20220212135920083_1_LARGE | 16 |
| 8214557_20220212135922942_1_LARGE | 16 |
| 8214557_20220212135930837_1_LARGE | 16 |
| 8214557_20220212135938595_1_LARGE | 17 |
| 8214557_20220212135936839_1_LARGE | 17 |
| 8214557_20220212135945728_1_LARGE | 17 |
| 8214557_20220212135942831_1_LARGE | 17 |
| 8214557_20220212135948982_1_LARGE | 17 |
| 8214557_20220212135953066_1_LARGE | 17 |
| 8214557_20220212135959061_1_LARGE | 18 |
| 8214557_20220212140003512_1_LARGE | 18 |
| 8214557_20220212140007395_1_LARGE | 18 |
| 8214557_20220212140009486_1_LARGE | 18 |
| 8214557_20220212140011606_1_LARGE | 18 |
| CONTACTS                          | 19 |
| Contact details                   | 19 |
| Telephones                        | 19 |
| Office hours                      | 19 |

---

Address

19

---

# SPECIFICATIONS

---

## Overview

---

Up for Auction with No Reserve! Starting bid \$100,000 Buy it Now \$225,000

Auction is for a Donation Vessel on a Charter Lease Purchase

Showings can be made by appointment

The *Wanderbird* is a 90' long steel-hulled trawler originally designed for fishing in the North Sea. Built in 1963 in Holland, she was converted to pleasure use in 1990. Powered by a single 510 HP diesel, range is an eye-popping 6,000 miles. Cruising speed is 7.5 knots, maximum is 10 knots, and the boat has an auxiliary ketch sailing rig. Important equipment includes three generators, a 1600 watt inverter, complete electronics and safety gear (including two life boats), and a rocket-propelled line-launcher. Accommodations feature six cabins with private heads and hand-made quilts and rugs. The *Wanderbird* is currently berthed in Gloucester.

SURVEY AVAILABLE UPON REQUEST

WANDERBIRD is a North Sea fishing trawler converted to a very comfortable long range expedition trawler. This stout refitted vessel is the culmination of our over forty years combined experience as professional mariners. We have drawn from our experience of carrying passengers on a traditional rigged sailing ship to create a custom design for your safety and comfort. WANDERBIRD is a combination of several elements: a traditional ketch auxiliary sailing rig, beautiful wood interiors with classic yacht design from the 1940s, a charming and cozy galley, the strength and integrity of a working fishing vessel, a fuel range of 6000 nautical miles, and capabilities for offshore adventure. We invite you to join us aboard this extraordinary vessel to experience the era of tramp steamer voyages! Wanderbird was built as a classic North Sea fishing trawler by the H. de Haas shipyard in Maassluis, Holland. She was launched as beam trawler for a Dutch fishing family, in 1963 and fished until 1990. A beam or side trawl carries fishing nets from the side of the vessel. Dimensions: >Length - 90 feet on deck >Beam 21 feet >Draft 10 feet >112 Gross Tonnage >Mechanical: >Powerful Industrie 510hp diesel engine, three generators, and fuel capacity to carry her 6,000 nautical miles. Economy speed 7.0 knots, cruise 7.5 knots, max 10 knots Fuel consumption 7-8 GPH at 7.5 knots or 1 mile per gallon Electrical 24 volt DC with 1600 Watt inverter. Will maintain on battery charge 12 to 14 hours before charging. Navigation & Electronics: >3 VHF radios, 2 radar sets, Sailor Radio Equipment, 3 GPS, wind instruments, satellite communications, depth sounder, forward looking sonar, SSB radio telephone, compass, autopilot, weather fax, Furuno NavTex receiver, electronic chart plotters, computer, and cellular phone. Safety and Equipment: >Owner operated, WANDERBIRD meets or exceeds all safety requirements for her class of transportation, and Lloyd's specifications for vessels carrying passengers: offshore First Aid kit, full fire detection & fire fighting equipment, high water alarms, Coast Guard approved life jackets, Coast Guard approved survival suits, 2 life

boats, 2 buoyant apparatus (20-person capacity), inflatable life rafts, 2 each E.P.I.R.B., oversize life rings with emergency strobe lights, rocket propelled line launchers, full flare kit, 6 watertight compartments, marine safety & First Aid certified crew. >Amenities: >Intimate Setting - 12 Passengers Aboard Our 90 Foot Vessel >Varnished Woodwork in Galley, Library, Dining Area & Deck Salon >Large Spacious Teak Decks >Ample Comfortable Seating in the Wheelhouse >Spacious, Bright & Open Galley >6 Cozy and Comfortable Double Cabins >Private Head & Shower in Each Cabin >Observation Deck, Rattan & Teak Steamer Chairs >Two Small Boats for Shore Side Adventures >Cabins > Private Head (Marine Toilet) > Sink with Running Water > Private Shower > Reading Lights & Stocked Book Case > 110 Volt AC Power & Heat > Linens, Soft Wool Blankets & Towels > Hand Made Soaps > Under Bunk Stowage & Closet with Shelves > Local Arts & Crafts > Hand Made Quilts & Rugs > Small Writing Desk

\*Auctioneer reserves the right to pull Yacht from Auction at anytime\*

NoteThe Company offers the details of this vessel in good faith but cannot guarantee or warrant the accuracy of this information nor warrant the condition of the vessel. A buyer should instruct his agents, or his surveyors, to investigate such details as the buyer desires validated. This vessel is offered subject to prior sale, price change, or withdrawal without notice.

## Basic Information

**Category:** Cruising Sailboat

**Model Year:** 1963

**Year Built:** 1963

**Country:** United States

## Dimensions

**LOA:** 90' (27.43mm)

**Beam:** 21

## Accommodations

**Total Cabins:** 6

**Crew Heads:** 8

## Hull and Deck Information

**Hull Material:** Steel

---

## Engine Information

---

**Engines:** 1

**Manufacturer:** Owner's Choice

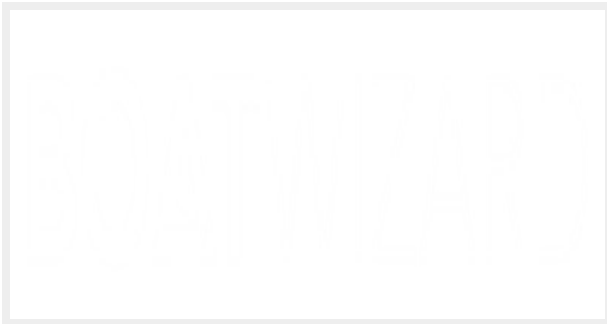
**Engine Type:** Inboard

**Fuel Type:** Diesel



# PHOTOS

1x1trans



8214557\_20220212135546281\_1\_LARGE



8214557\_20220212135550501\_1\_LARGE



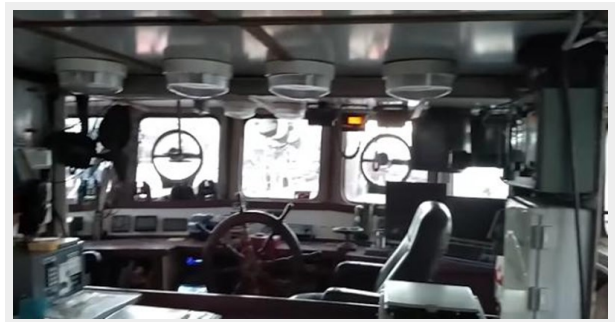
8214557\_20220212135554459\_1\_LARGE



8214557\_20220212135558031\_1\_LARGE



8214557\_20220212135602765\_1\_LARGE



8214557\_20220212135605783\_1\_LARGE



8214557\_20220212135609071\_1\_LARGE



8214557\_20220212135615836\_1\_LARGE



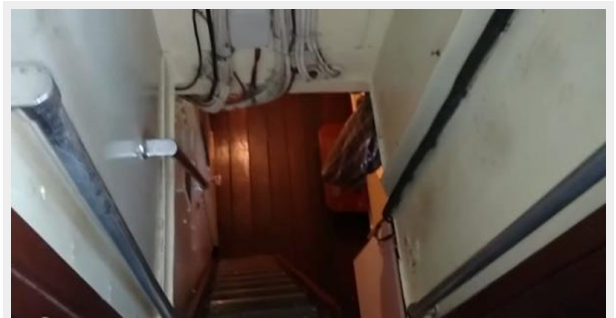
8214557\_20220212135618980\_1\_LARGE



8214557\_20220212135622192\_1\_LARGE



8214557\_20220212135624688\_1\_LARGE



8214557\_20220212135627882\_1\_LARGE



8214557\_20220212135630893\_1\_LARGE



8214557\_20220212135633791\_1\_LARGE



8214557\_20220212135636773\_1\_LARGE



8214557\_20220212135640093\_1\_LARGE



8214557\_20220212135646253\_1\_LARGE



8214557\_20220212135652489\_1\_LARGE



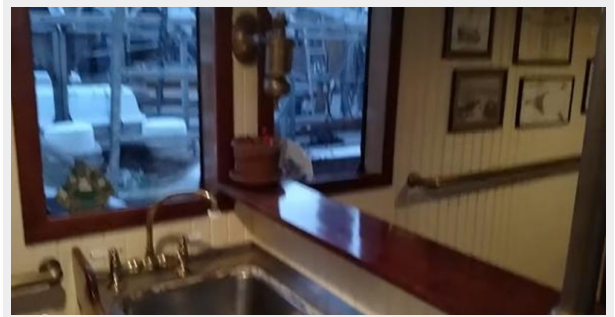
8214557\_20220212135655809\_1\_LARGE



8214557\_20220212135659343\_1\_LARGE



8214557\_20220212135702454\_1\_LARGE



8214557\_20220212135706009\_1\_LARGE



8214557\_20220212135711513\_1\_LARGE



8214557\_20220212135714073\_1\_LARGE



8214557\_20220212135717850\_1\_LARGE



8214557\_20220212135722183\_1\_LARGE



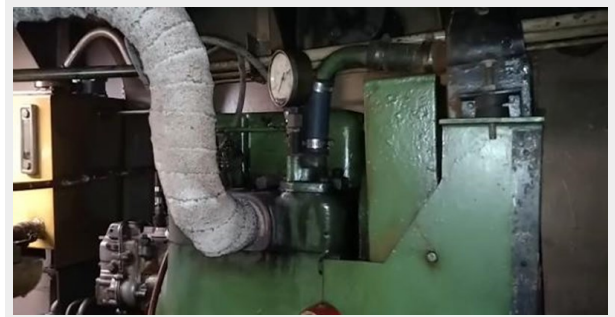
8214557\_20220212135726287\_1\_LARGE



8214557\_20220212135729700\_1\_LARGE



8214557\_20220212135732851\_1\_LARGE



8214557\_20220212135737238\_1\_LARGE



8214557\_20220212135743239\_1\_LARGE



8214557\_20220212135747162\_1\_LARGE



8214557\_20220212135751010\_1\_LARGE



8214557\_20220212135755119\_1\_LARGE



8214557\_20220212135758777\_1\_LARGE



8214557\_20220212135802211\_1\_LARGE



8214557\_20220212135805826\_1\_LARGE



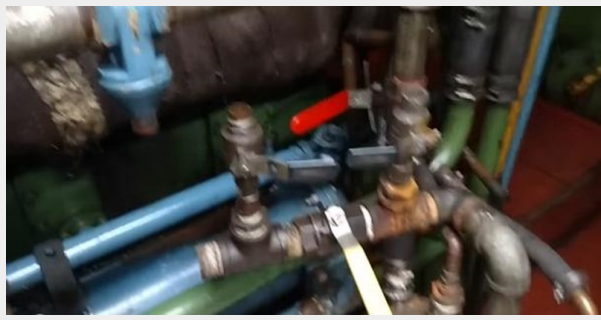
8214557\_20220212135808536\_1\_LARGE



8214557\_20220212135811770\_1\_LARGE



8214557\_20220212135814939\_1\_LARGE



8214557\_20220212135817686\_1\_LARGE



8214557\_20220212135820246\_1\_LARGE



8214557\_20220212135824320\_1\_LARGE



8214557\_20220212135827534\_1\_LARGE



8214557\_20220212135831202\_1\_LARGE



8214557\_20220212135835310\_1\_LARGE



8214557\_20220212135839012\_1\_LARGE



8214557\_20220212135842231\_1\_LARGE



8214557\_20220212135845910\_1\_LARGE



8214557\_20220212135848623\_1\_LARGE



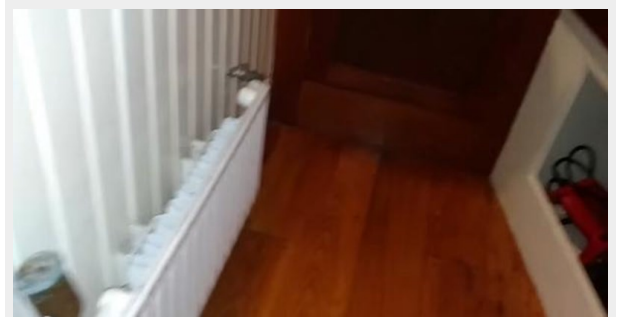
8214557\_20220212135852095\_1\_LARGE



8214557\_20220212135855211\_1\_LARGE



8214557\_20220212135858366\_1\_LARGE



8214557\_20220212135901320\_1\_LARGE



8214557\_20220212135904685\_1\_LARGE



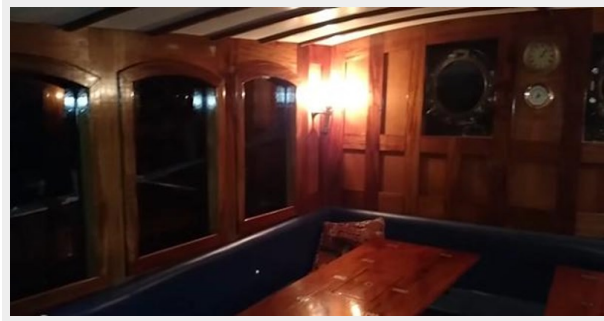
8214557\_20220212135907722\_1\_LARGE



8214557\_20220212135910743\_1\_LARGE



8214557\_20220212135913757\_1\_LARGE



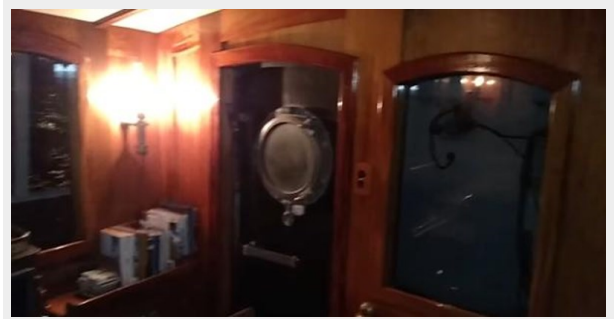
8214557\_20220212135920083\_1\_LARGE



8214557\_20220212135922942\_1\_LARGE



8214557\_20220212135930837\_1\_LARGE





8214557\_20220212135938595\_1\_LARGE



8214557\_20220212135936839\_1\_LARGE



8214557\_20220212135945728\_1\_LARGE



8214557\_20220212135942831\_1\_LARGE



8214557\_20220212135953066\_1\_LARGE



8214557\_20220212135948982\_1\_LARGE



8214557\_20220212135959061\_1\_LARGE



8214557\_20220212140003512\_1\_LARGE



8214557\_20220212140007395\_1\_LARGE



8214557\_20220212140009486\_1\_LARGE



8214557\_20220212140011606\_1\_LARGE



# CONTACTS

---

Andrey Shestakov, leading yacht broker of the sales department of Shestakov Yacht Sales Inc. Shestakov Yacht Sales Inc., the official representative of the Miami/Fort Lauderdale FL headquarters.

## Contact details

---

Email: [andrey@shestakovyachtsales.com](mailto:andrey@shestakovyachtsales.com)

Web: [shestakovyachtsales.com/en/](http://shestakovyachtsales.com/en/)

## Telephones

---

USA: +1(954)274-4435

## Office hours

---

Monday – Saturday: **9:00 - 21:00** EDT

Sunday: **closed**

## Address

---



Harbour Towne Marina, 850 NE 3rd St,  
STE 213, Dania, FL 33004